

VCC-ME-M

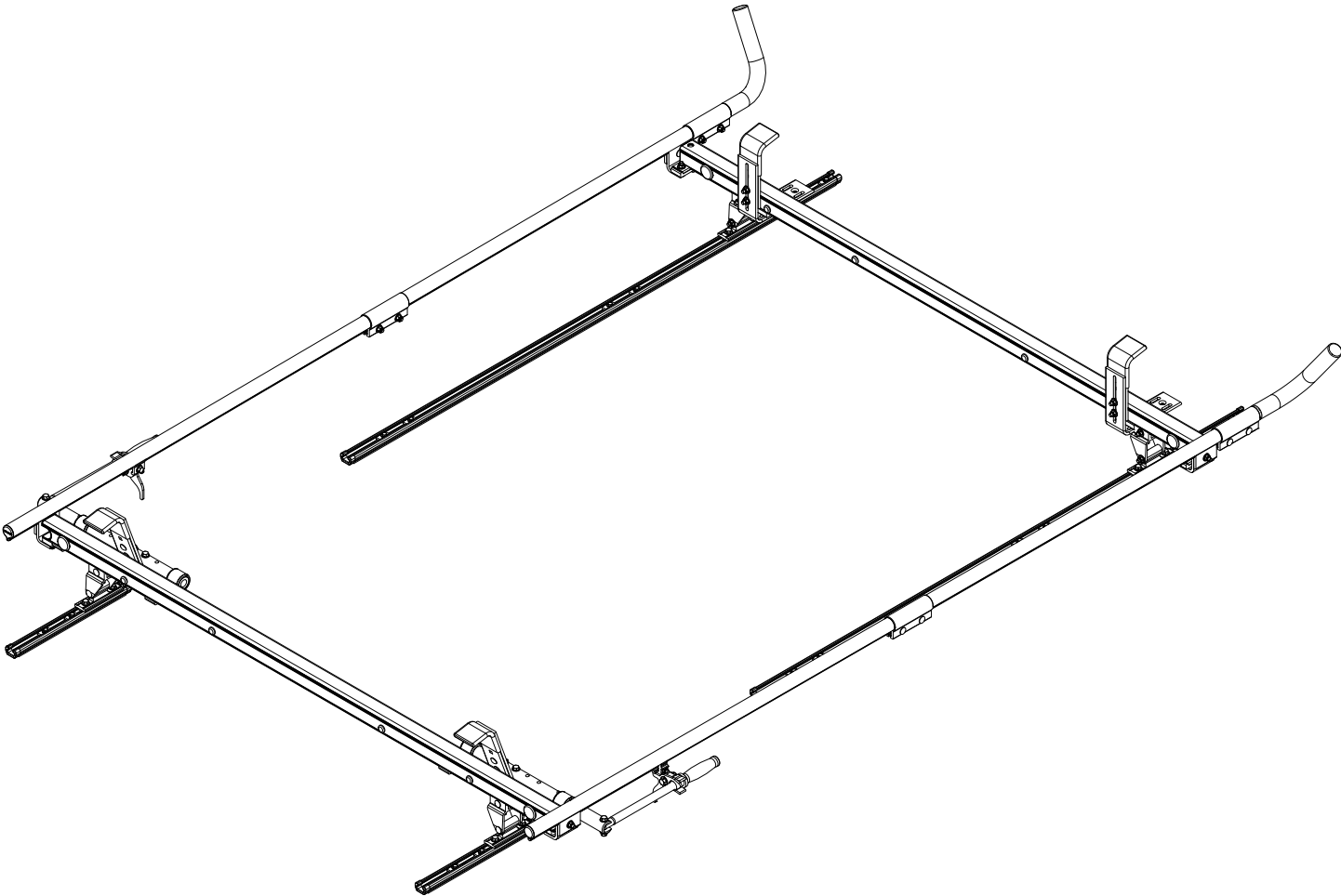
Van Rack, 2016+ Mercedes Metris
Dimensional Specifications on Pages 5 & 6

Configuration as shown:

- Clamp Down Left/Clamp Down Right
- Two Crossbars, US Gen4
- Finish: White Powder Coat
- FBM-1015-BLK Mounting System
- CBR-0003 Crossbar Feature
- FEA-0001 Ladder Stop Feature
- FEA-0008 Clamp Down Feature (x2)
- Rack Weight (empty): 72.25 lbs

Load specifications as shown:

- Maximum Ladder Weight LH..... 75 lbs
- Maximum Ladder Length LH..... 32 ft
- Maximum Ladder Section LH 16 ft
- Maximum Ladder Weight RH 75 lbs
- Maximum Ladder Length RH 32 ft
- Maximum Ladder Section RH..... 16 ft



FBM-1015

2016 Mercedes Metris Base Mount Module, L2H1/L3H1

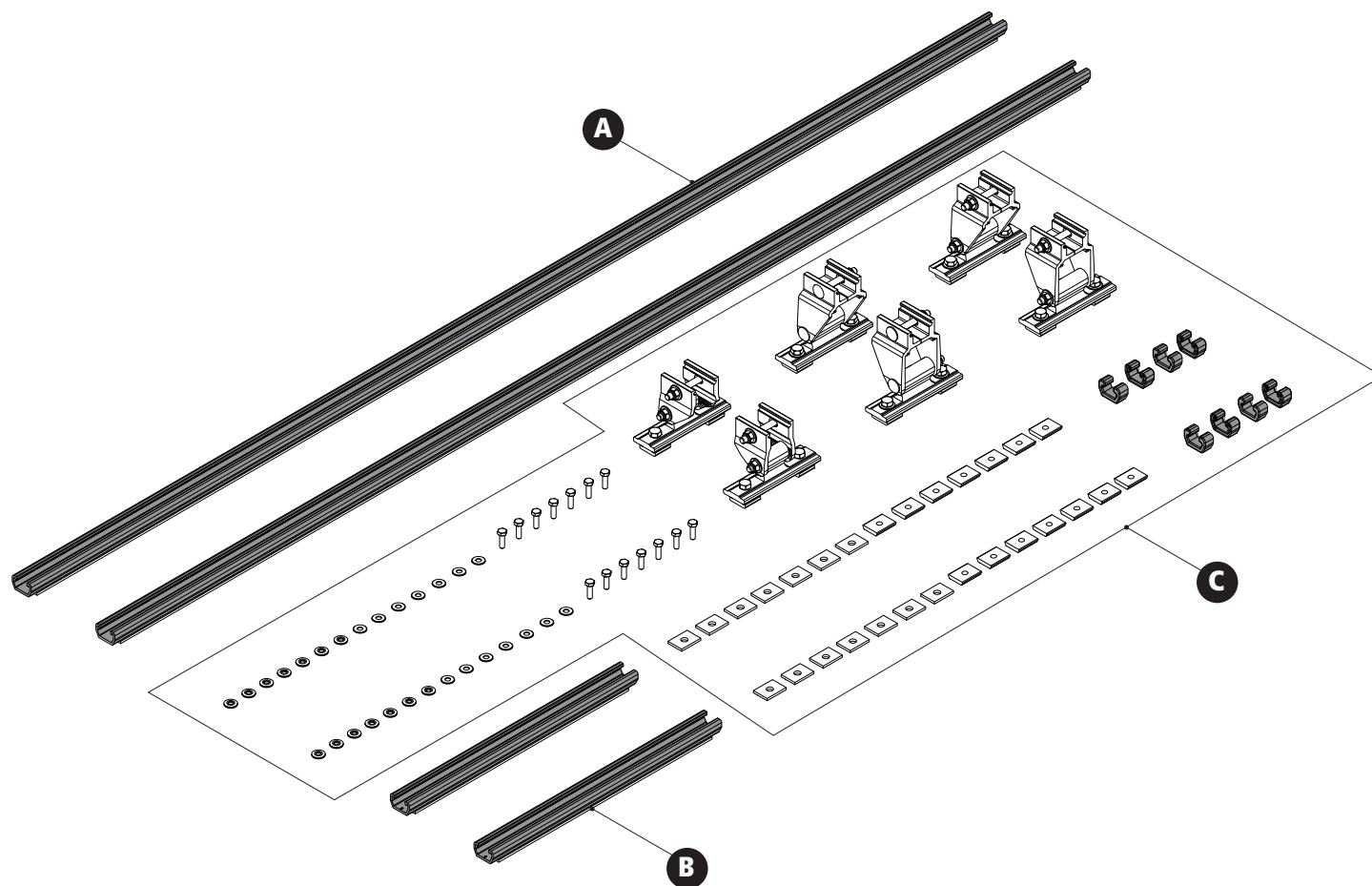
Configuration as shown:

Three Crossbar Mounting, US Gen4

Finish: White Powder Coat

HKT-8014 Hardware

Kit Weight: 9.25 lbs



Assembly Manual also available:

FBM-1015

USOV-FBM1015-US01 Rev-C 0718

CBR-0003

Crossbar Module

Configuration as shown:

Rotation Left/Rotation Right, US Gen4

Finish: White Powder Coat

Weight: 13 lbs

Approximate dimensions as shown:

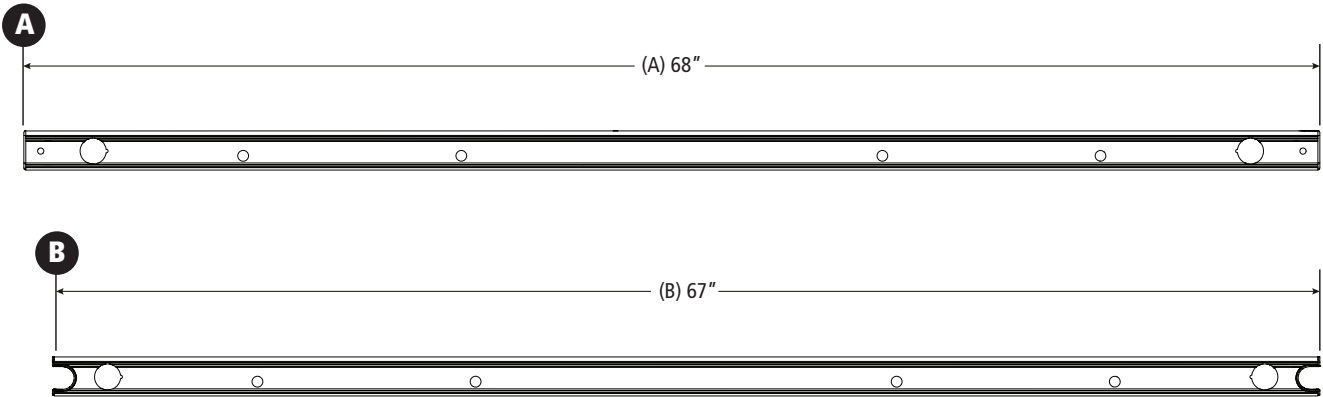
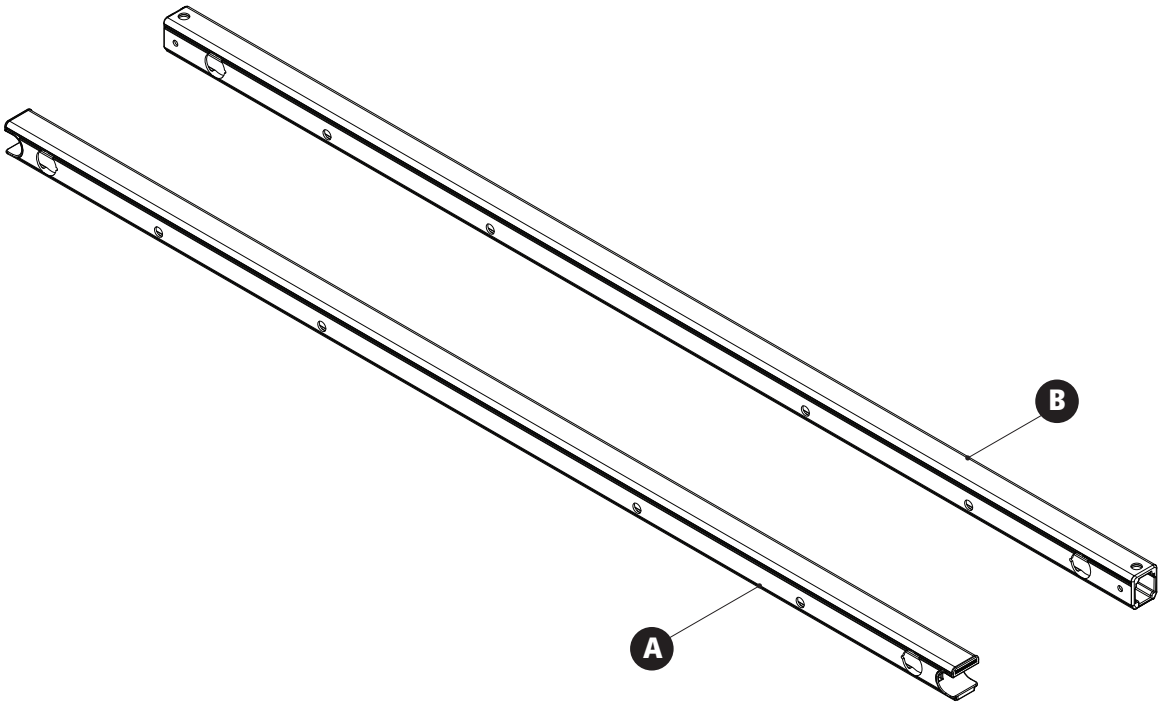
A: Front Crossbar Length68"

B: Rear Crossbar Length67"

Assembly Manual also available:

CBR-0003

USOV-CBR0003-US01 Rev-C 0118



FEA-0008

RH/LH Clamp Down Module

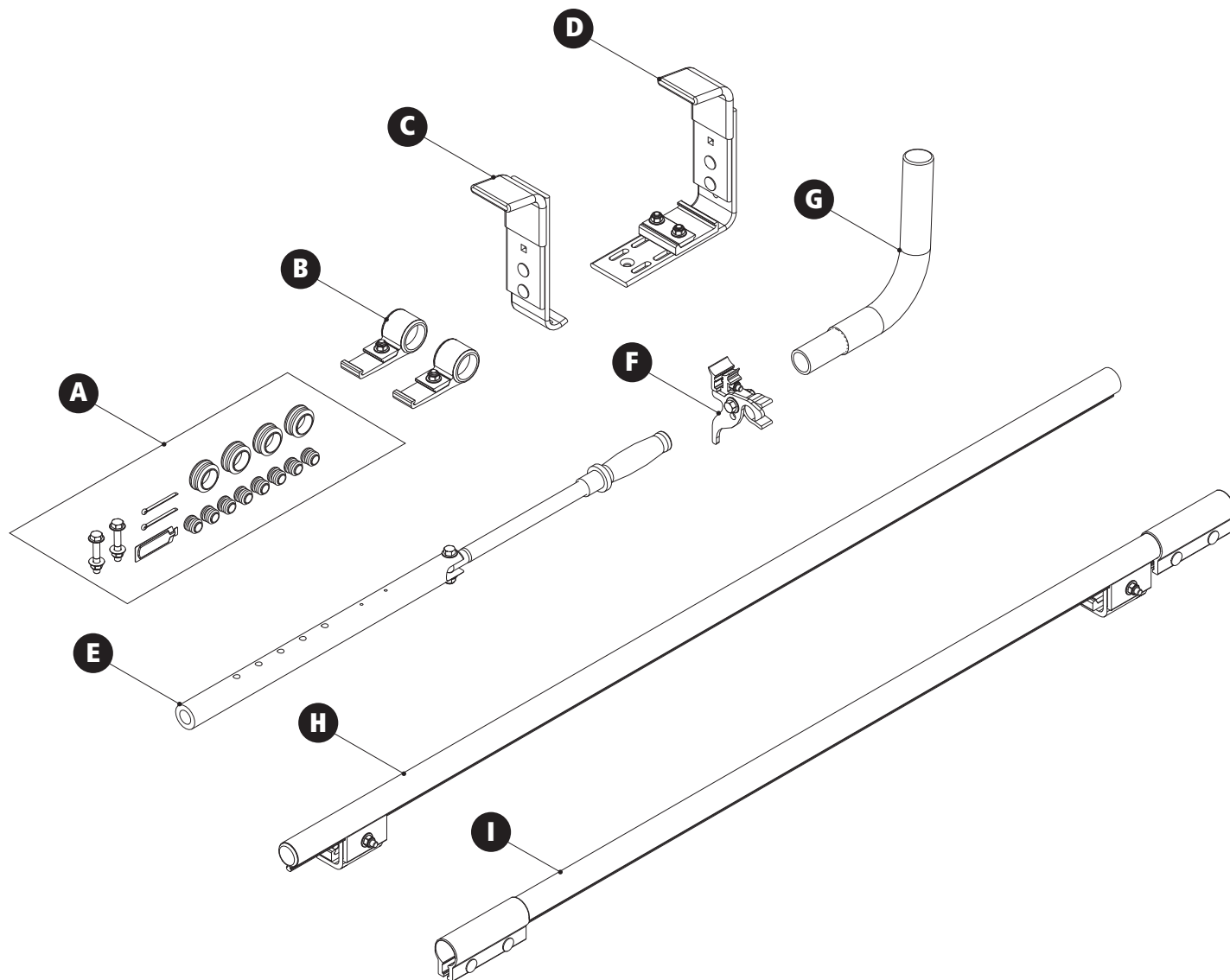
Configuration as shown:

8' Clamp Down, US Gen4

Finish: White Powder Coat

HKT-8403 Hardware Kit

Kit Weight: 25 lbs



Assembly Manual also available:

FEA-0008

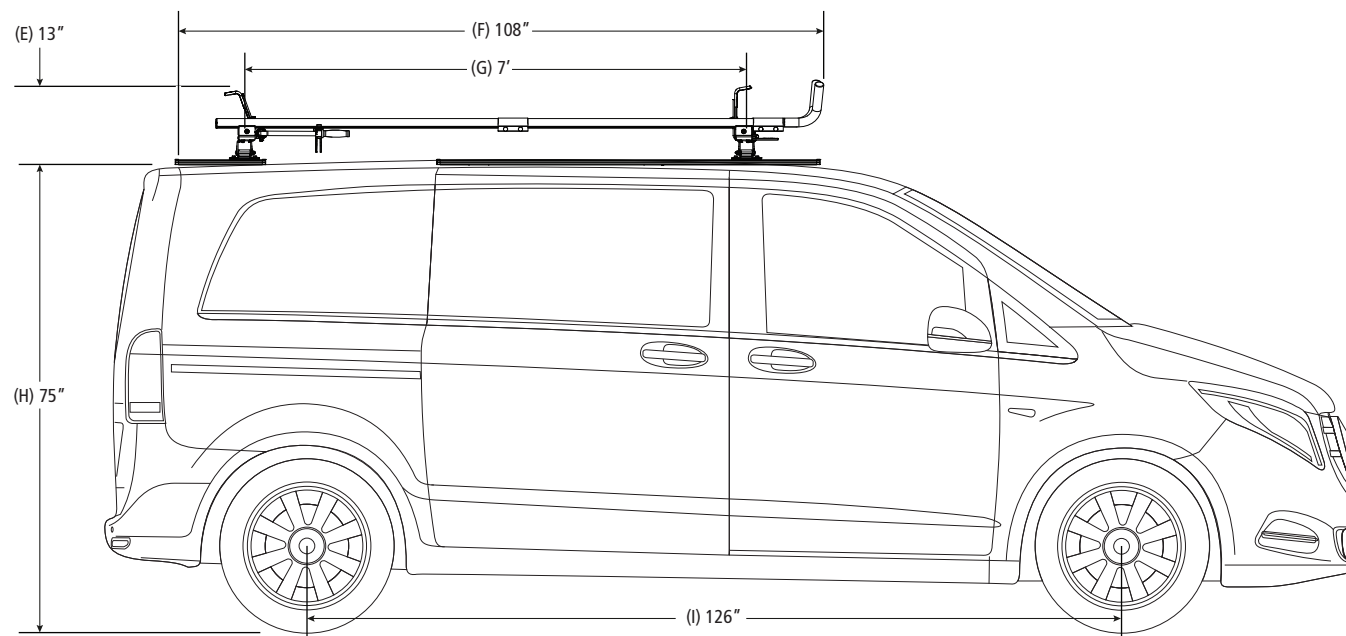
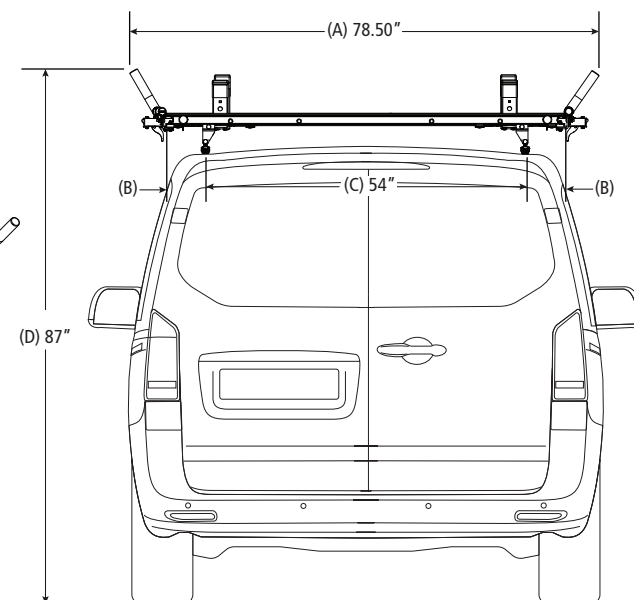
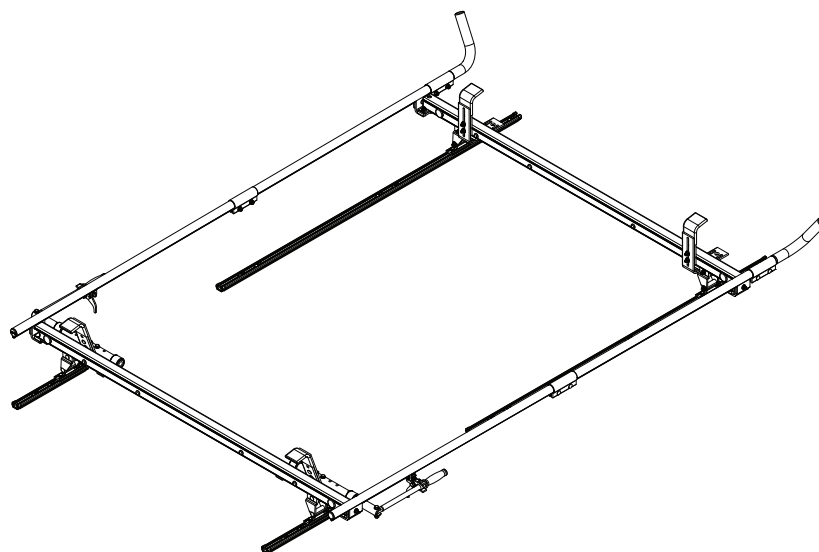
USOV-FEA0008-US01 Rev-A 0118

VCC-ME-M

2016+ Mercedes Metris L2H1 Medium Wheel Base, Low Roof

Approximate dimensions as shown:

A: Rack Width	78.50"
B: Crossbar Offset	Even
C: Mount Spacing L/R.....	54.00"
D: Overall Height.....	87.00"
E: Rack Height.....	13.00"
F: Rack Length	108.00"
G: Crossbar Spacing	7'
H: Roof Height	75.00"
I: Wheel Base	126.00"



VCC-ME-M

2016+ Mercedes Metris L3H1 Long Wheel Base, Low Roof

Approximate dimensions as shown:

A: Rack Width	78.50"
B: Crossbar Offset	Even
C: Mount Spacing L/R.....	54.00"
D: Overall Height.....	87.00"
E: Rack Height.....	13.00"
F: Rack Length	114.00"
G: Crossbar Spacing	8'
H: Roof Height	75.00"
I: Wheel Base	135.00"

