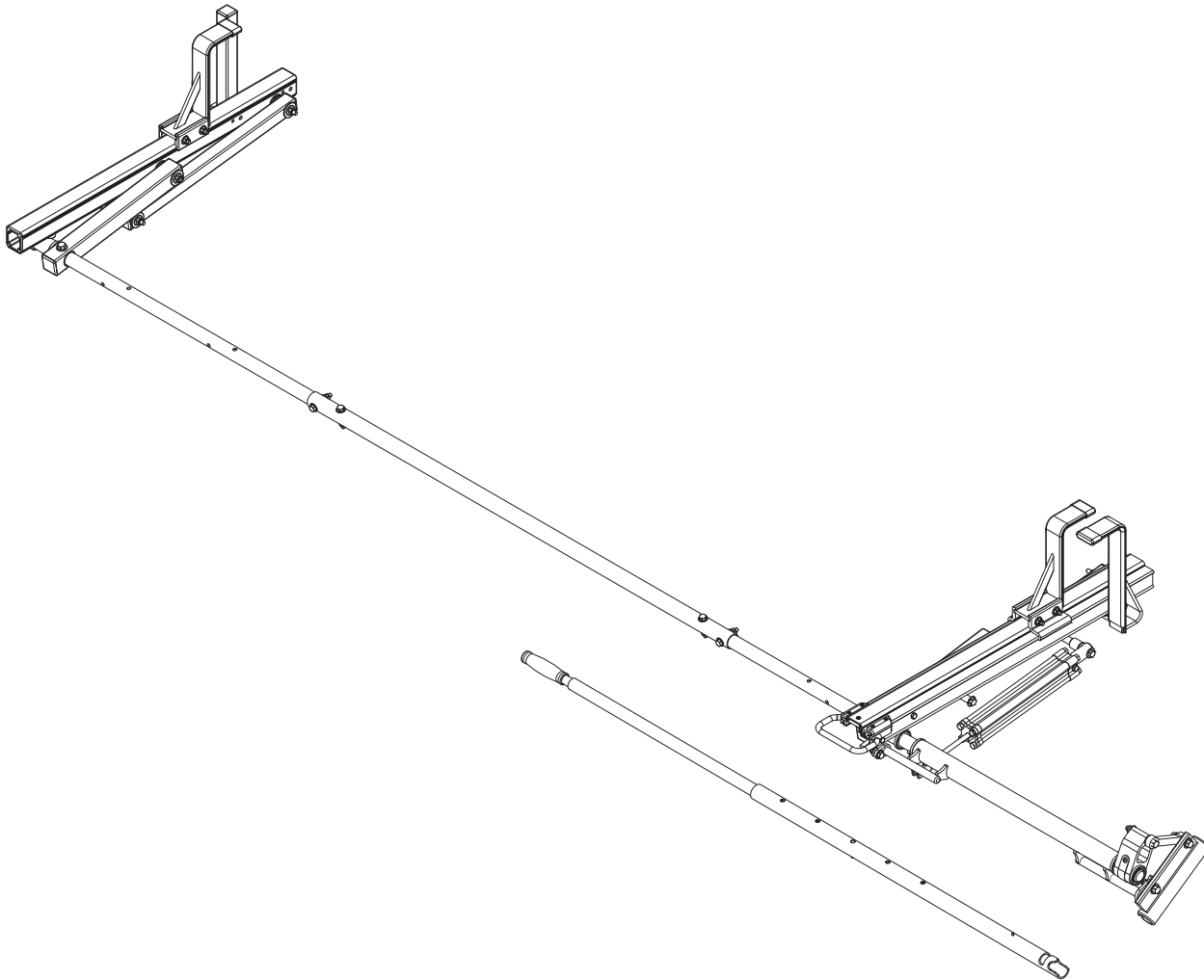


# PRIME DESIGN™

A Safe Fleet Brand

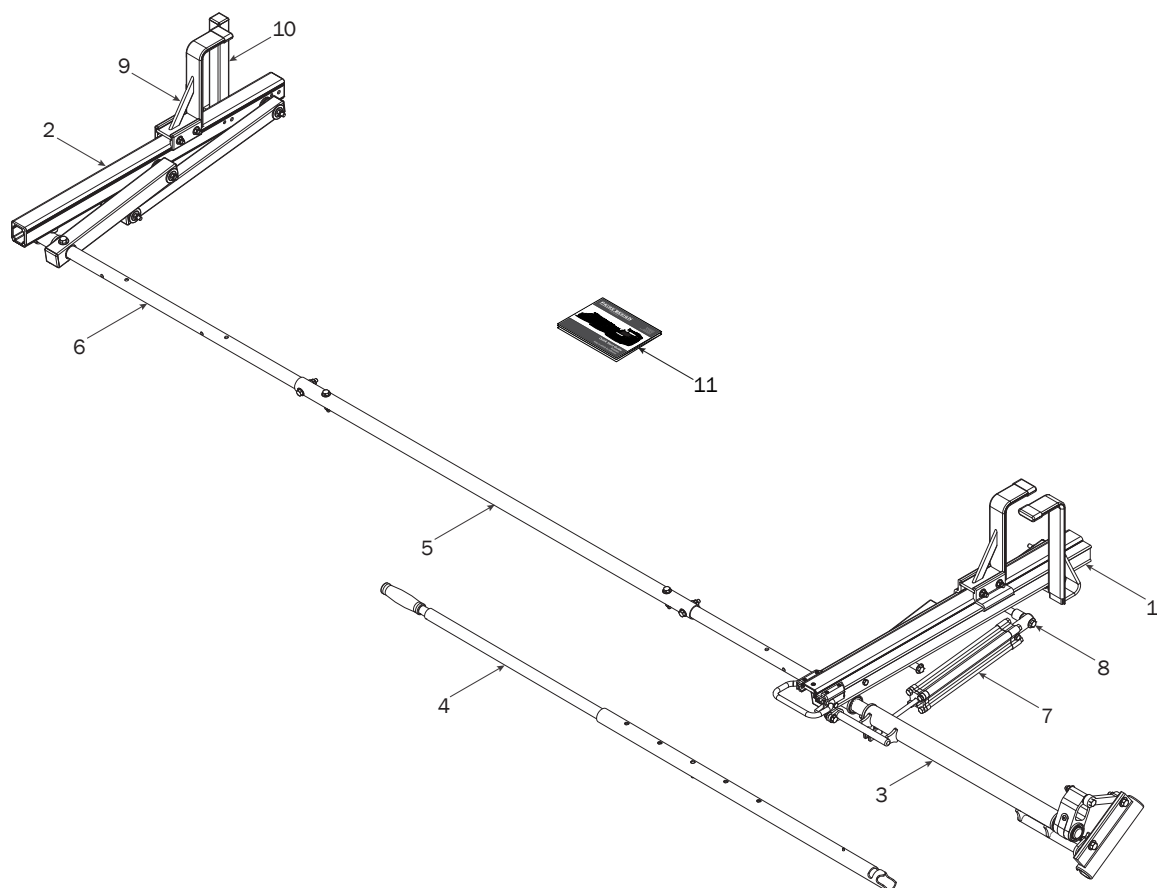


## *6'-8' SLIDE ROTATION RETROFIT KIT*

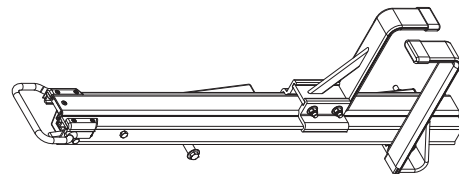
PRIME DESIGN, A SAFE FLEET BRAND • Address: 1689 Oakdale Avenue #102, West St Paul, Minnesota 55118  
Toll Free: 1.8.PRIME.RACK • Fax: 651-552-1799 • Email: [info@primedesign.net](mailto:info@primedesign.net) • Website: [www.primedesign.net](http://www.primedesign.net)

# HRX-009-E-RETRO

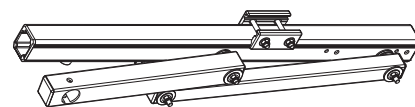
## CONTENTS OVERVIEW



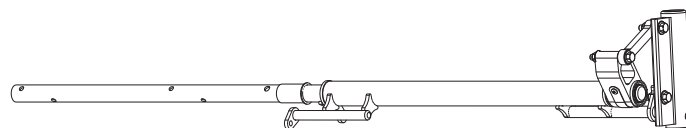
1—Rear Crossbar Assembly ..... (Qty 1)



2—Front Crossbar Assembly ..... (Qty 1)



3—Rear Drive Shaft ..... (Qty 1)  
Left Hand, A Version, 50.00"



4—HHR Handle Assembly ..... (Qty 1)  
35.00"



5—Connecting Bar ..... (Qty 1)  
4.00'



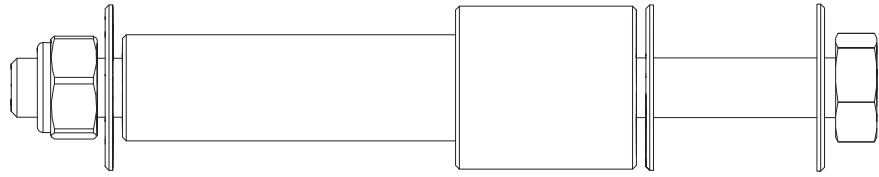
6—Front Drive Shaft ..... (Qty 1)  
B Version, 35.75"



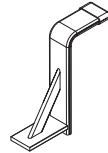
7—Hydraulic Cylinder ..... (Qty 1)



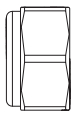
8—BLT-6811-M8..... (Qty 1)  
Cylinder Hex Head Assembly, M8 x 110MM



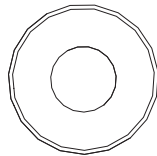
9—Z Post ..... (Qty 1)  
Adjustment, 7.25"



10—L Post ..... (Qty 1)  
G1, Square Cap, 9.25" w/Hardware



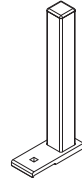
M8 Lock Nut (1X)



5/16" Flat Washer (1X)



M8 x 65MM (1X)



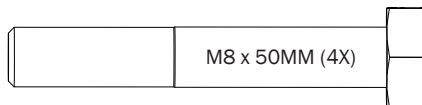
11—USQSG-Ergorack ..... (Qty 1)  
Quick Start Guide, Rotation



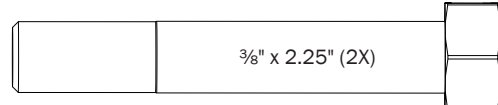
12—HKT-8163 (Not called out in Overview)..... (Qty 1)



Clevis Pin (1X)



M8 x 50MM (4X)



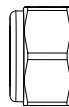
3/8" x 2.25" (2X)



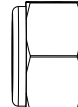
Cotter Pin (1X)



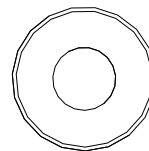
M8 x 25MM (1X)



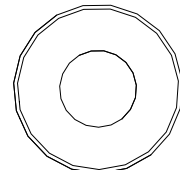
M8 Lock Nut (5X)



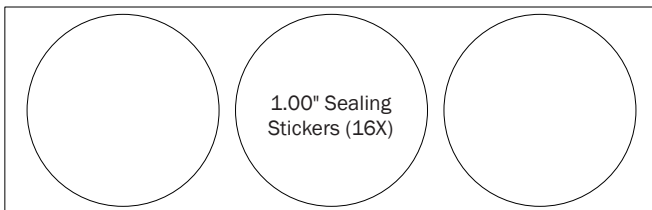
3/8" Lock Nut (2X)



5/16" Flat Washer (10X)



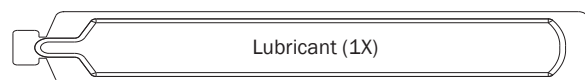
3/8" Flat Washer (4X)



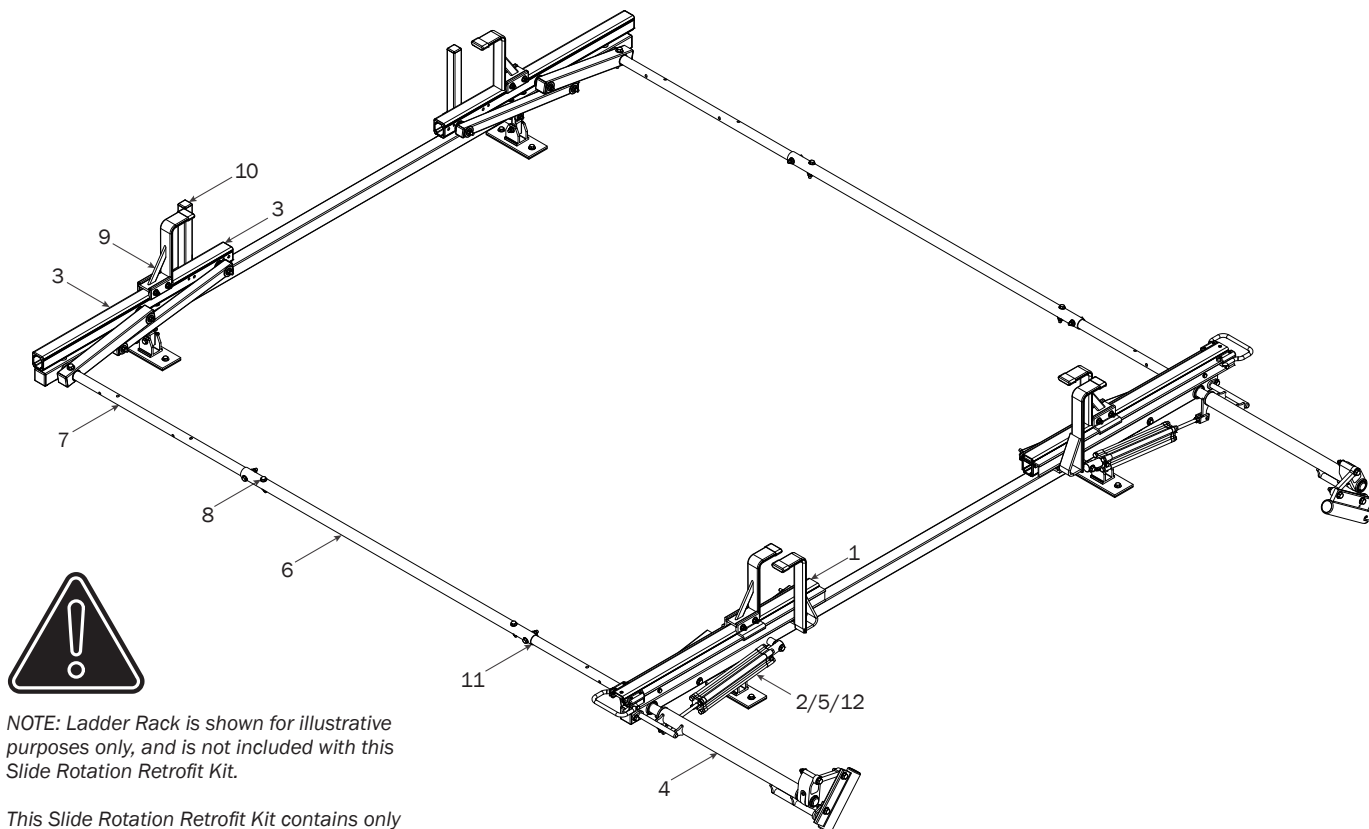
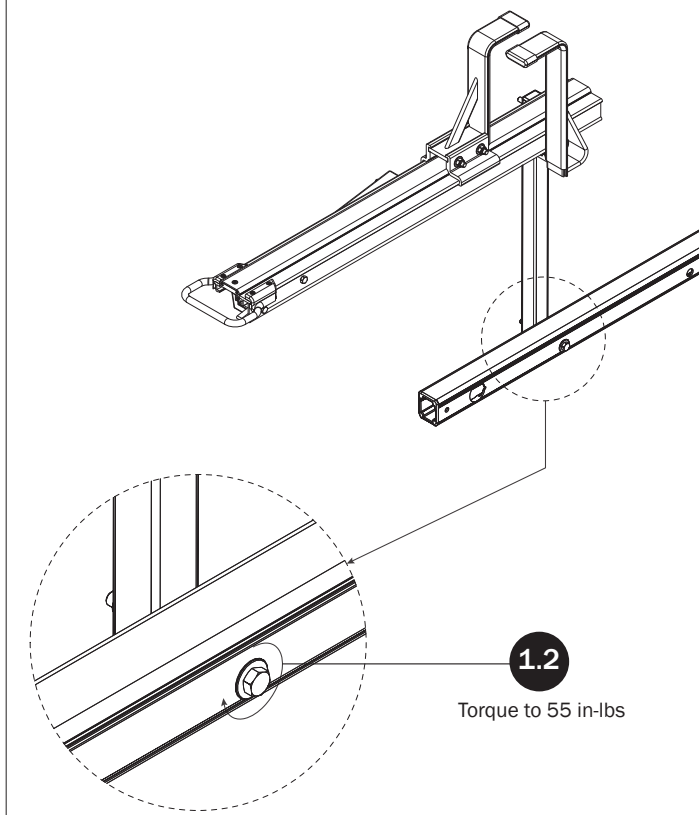
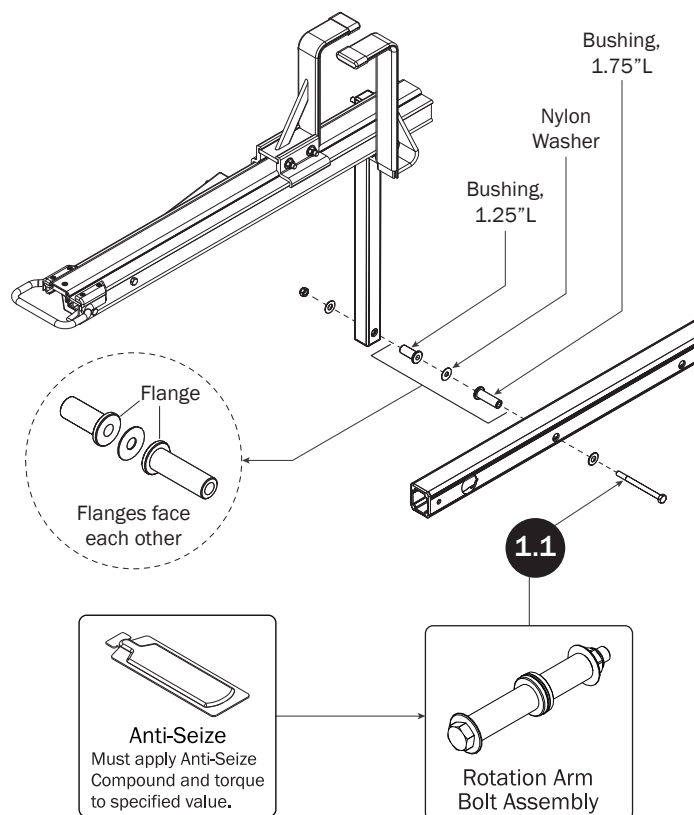
1.00" Sealing  
Stickers (16X)



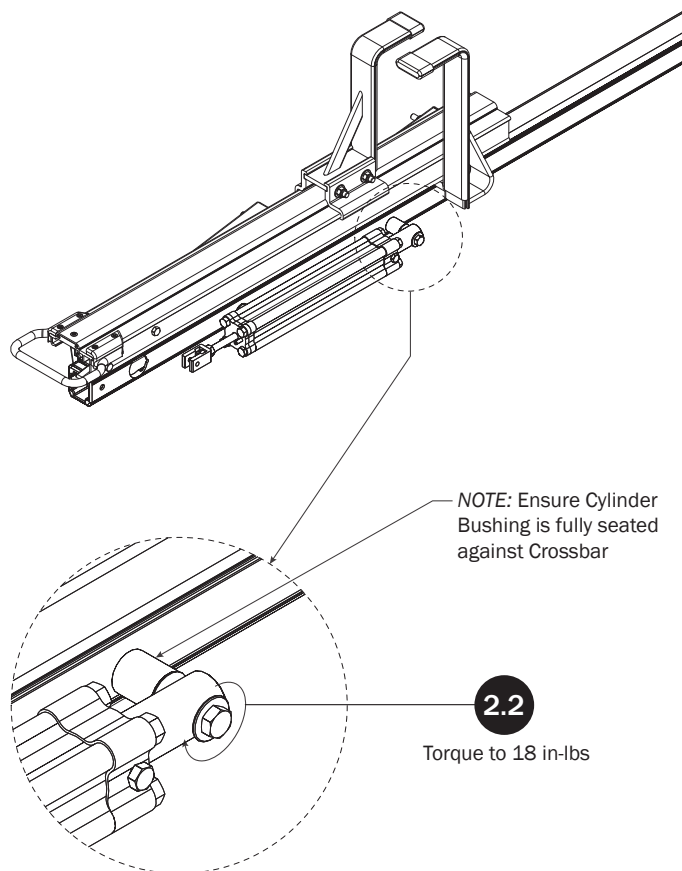
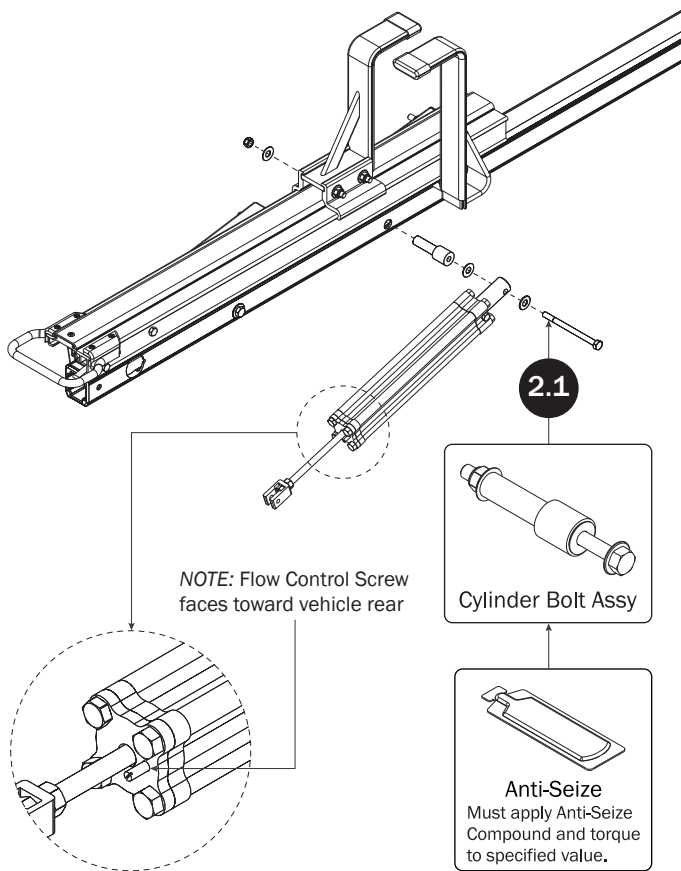
Anti-Seize (1X)



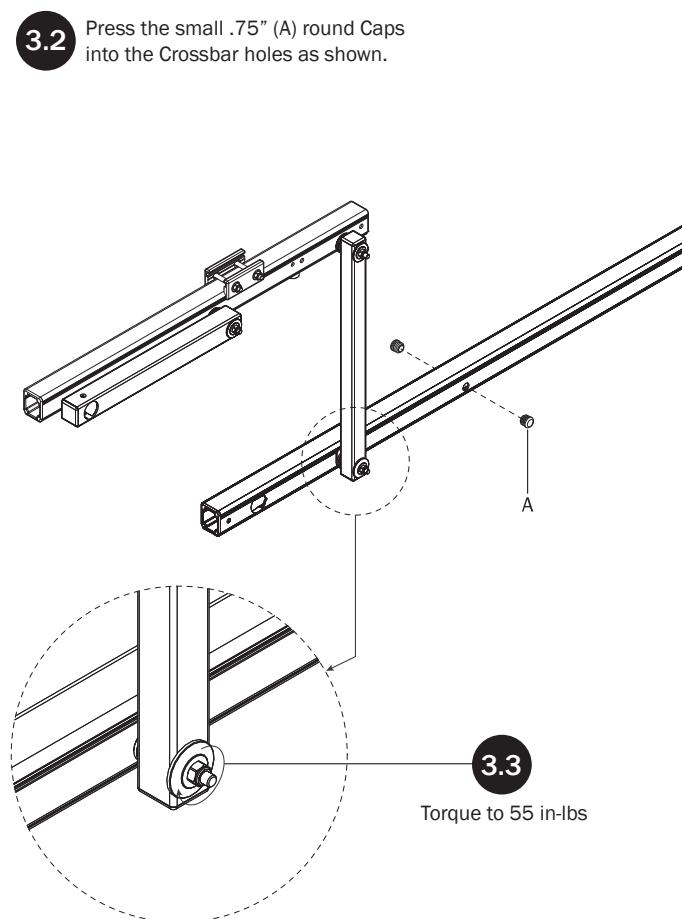
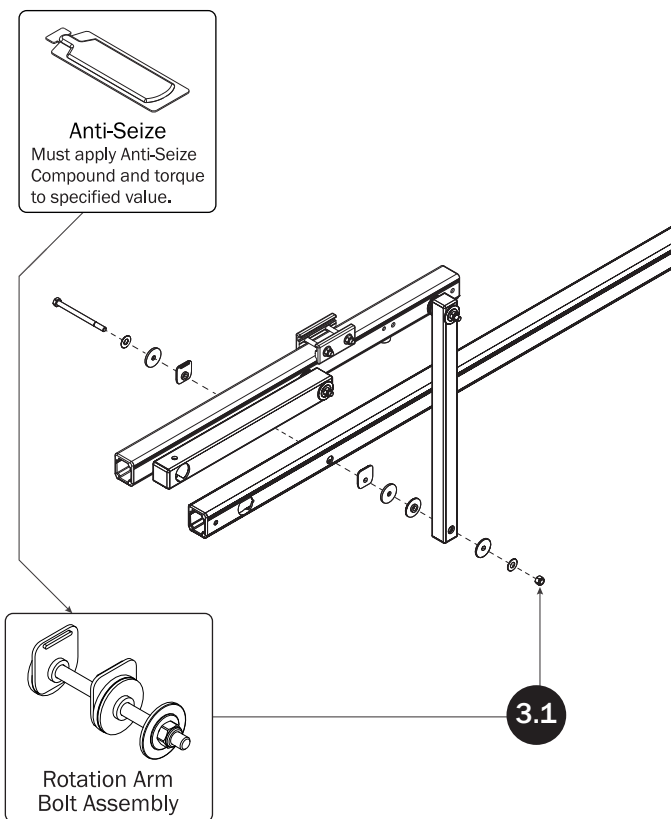
Lubricant (1X)

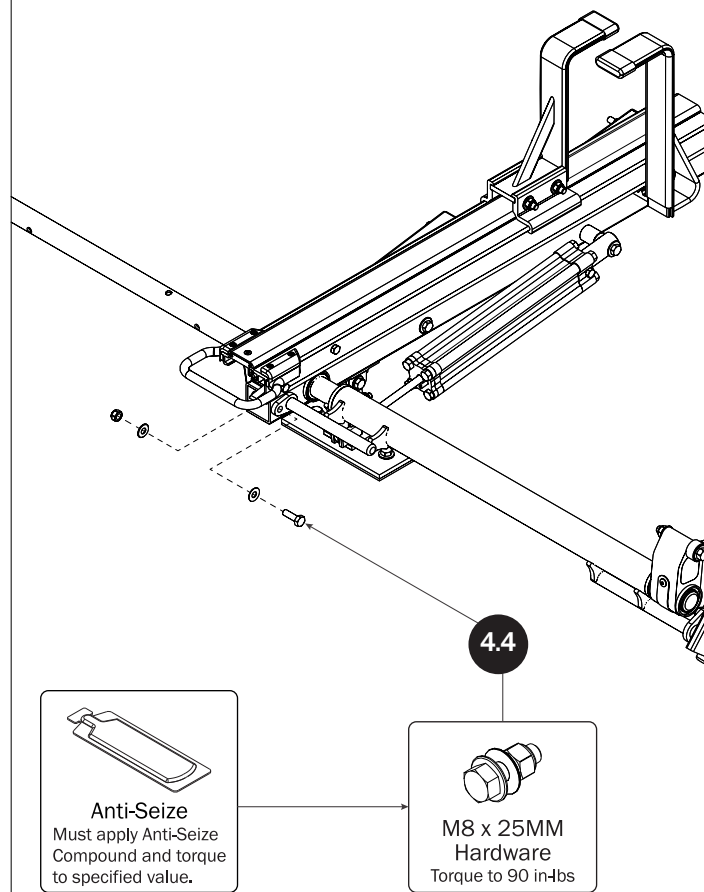
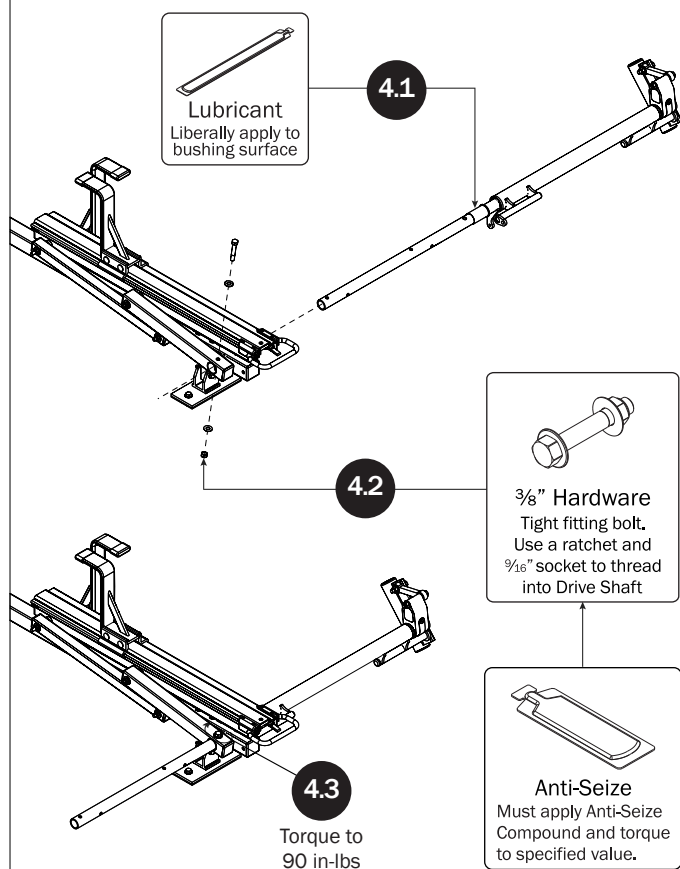
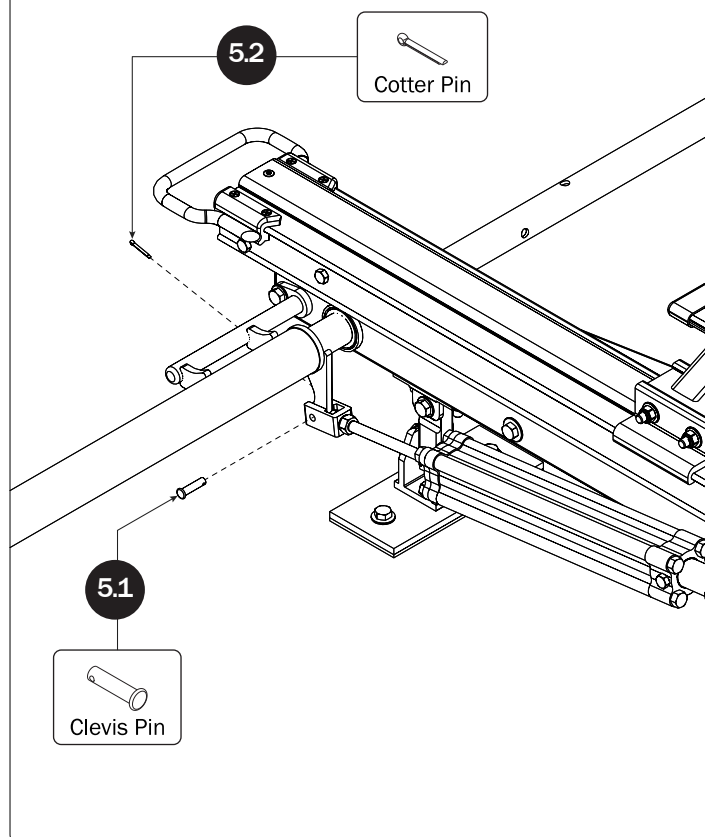
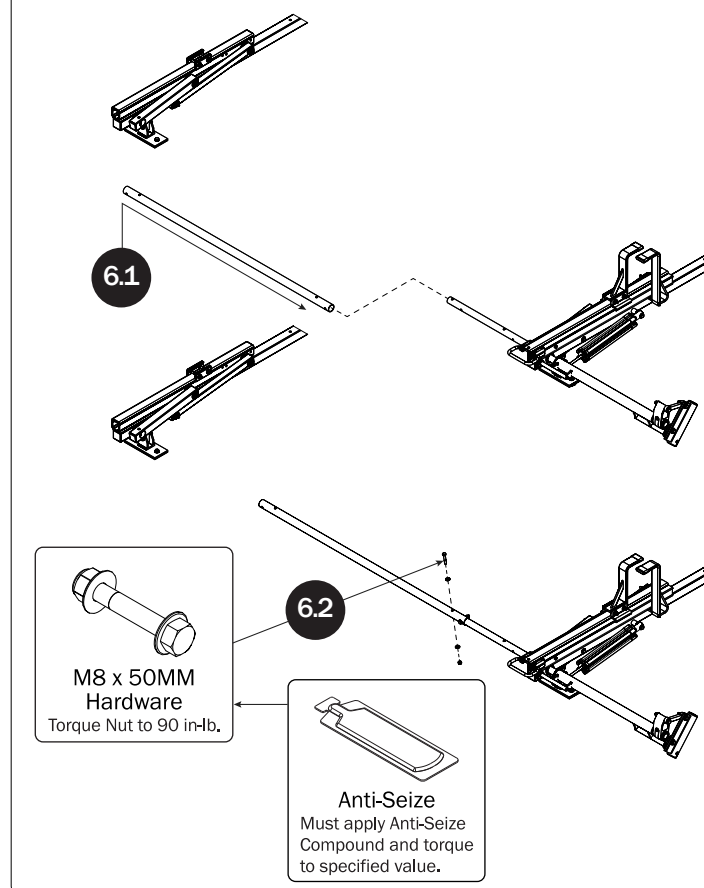
**LEFT SIDE ASSEMBLY SEQUENCE****REAR CROSSBAR ROTATION**

## CYLINDER HARDWARE

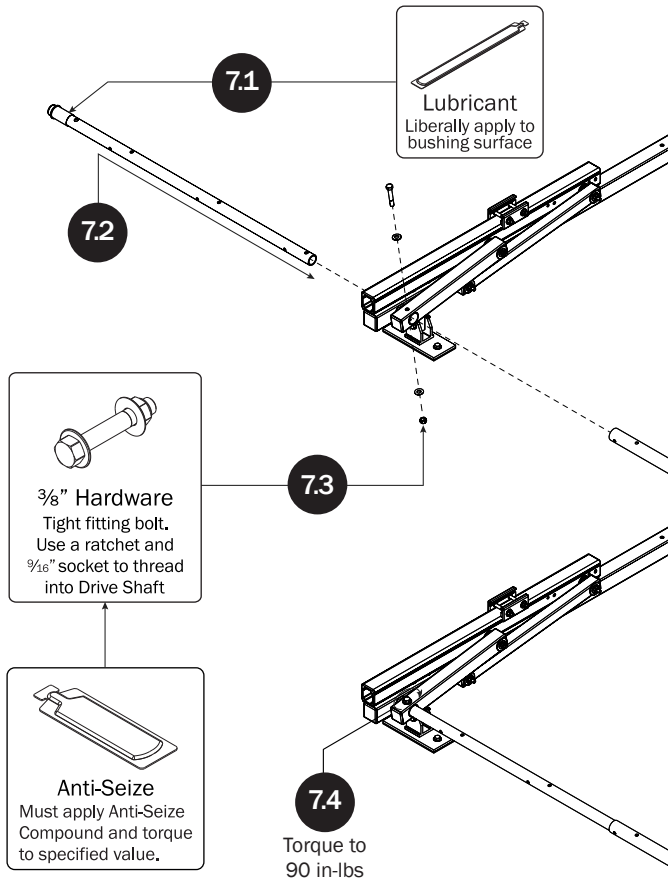


## FRONT CROSSBAR ROTATION

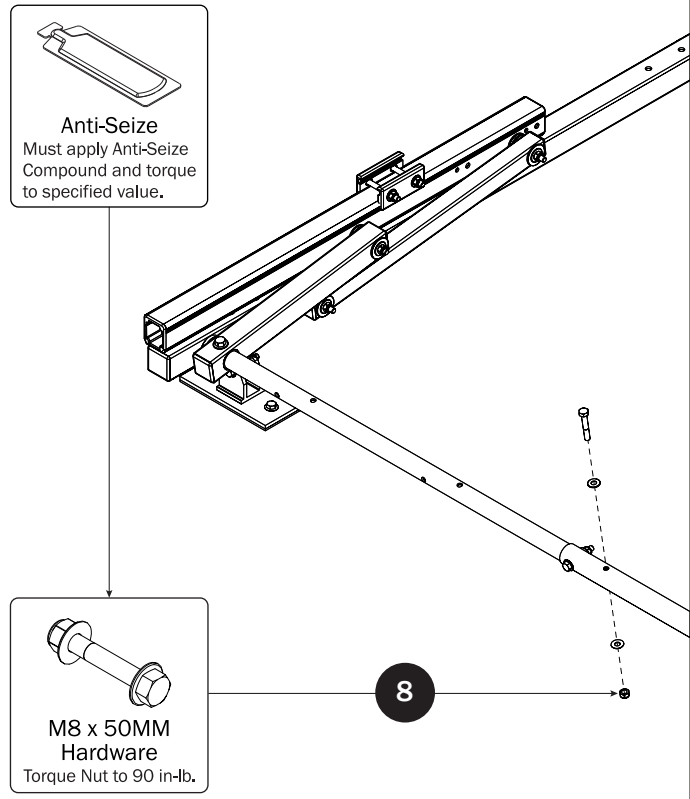


**REAR DRIVE SHAFT****CYLINDER HARDWARE****CONNECTING BAR**

## FRONT DRIVE SHAFT

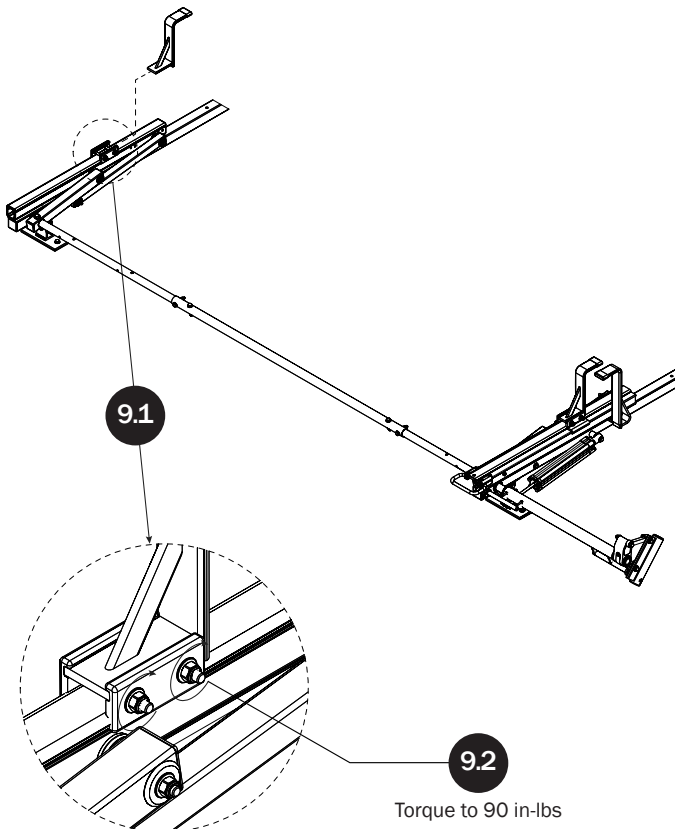


## CONNECTING BAR FASTENERS

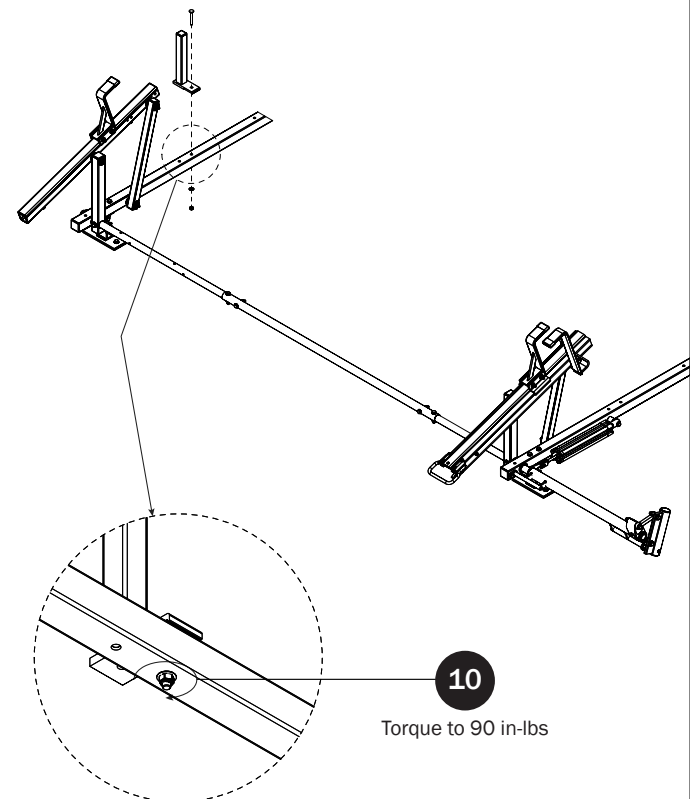


## Z POST

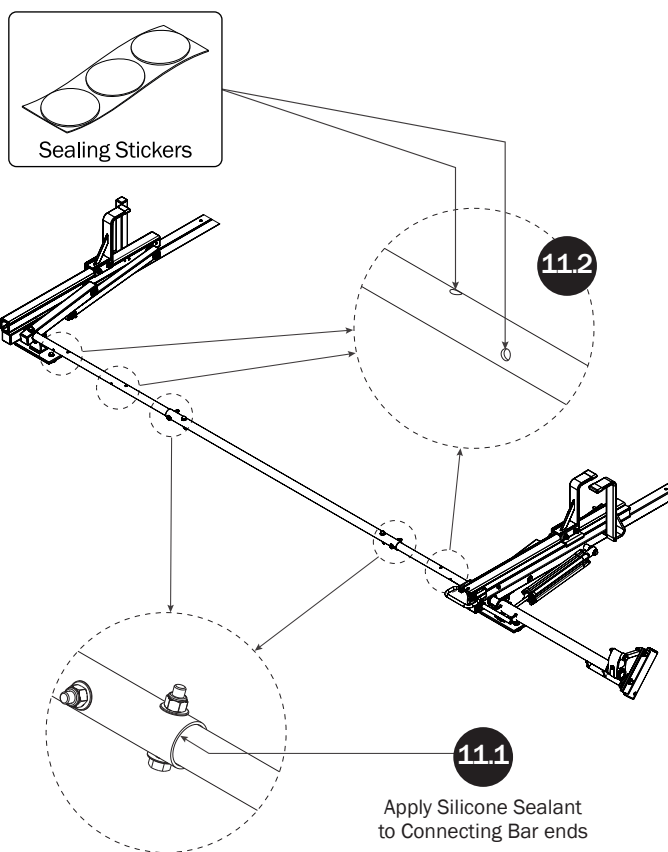
SEE QUICK START GUIDE FOR ADJUSTMENTS



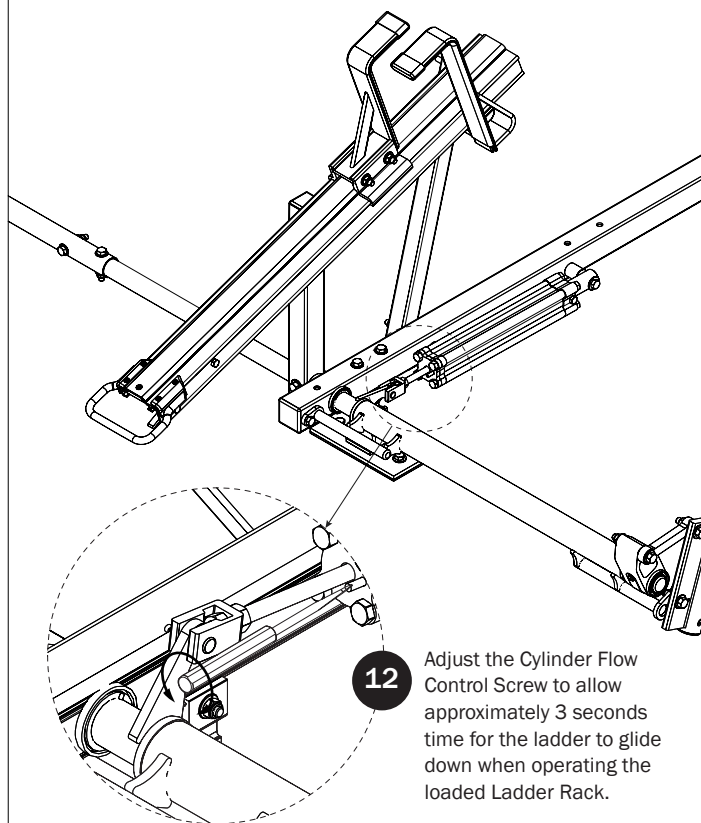
## L POST



## DRIVE SHAFT SEALING



## CYLINDER ADJUSTMENT



USAM-HRX009ERETRO-US01 Rev-B 0218