

FEA-0002

Rotation-Rotation Module

Dimensional Specifications on Page 2

Configuration as shown:

RotationLeft/Rotation Right, Powder Coat Finish

Kit Weight: 23 lbs

Parts Breakdown for Replacement Orders:

A:ELR-8402 RH Rear/LH Front Rotation

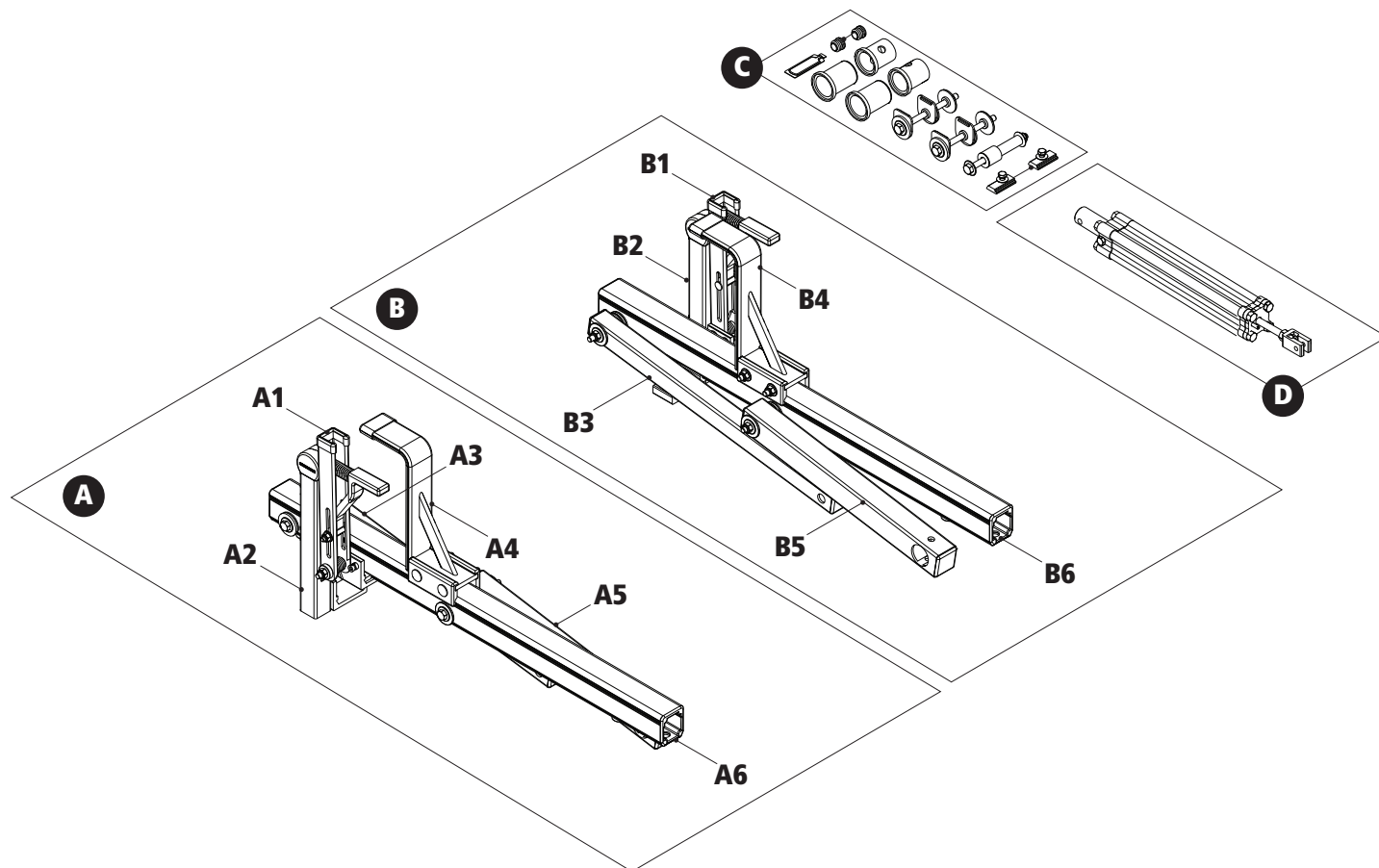
- A1:..... RKT-7893 Auto Clamp
- A2:..... RKT-7854 L-Post (with Hardware)
- A3:..... RKT-2010 Rotation Arm
- A4:..... RKT-7856 Z-Post (with Brackets)
- A5:..... RKT-2012 Drive Arm
- A6: ELR-7039 Rotation Upper

B:.....ELR-8401 LH Rear/RH Front Rotation

- B1:..... RKT-7892 Auto Clamp
- B2:..... RKT-7854 L-Post (with Hardware)
- B3: RKT-2010 Rotation Arm
- B4:..... RKT-7856 Z-Post (with Brackets)
- B5:..... RKT-2012 Drive Arm
- B6:..... ELR-7039 Rotation Upper

C:.....HKT-8401 Rotation Module Hardware Kit

D: ACL-125 Cylinder (with Hardware)



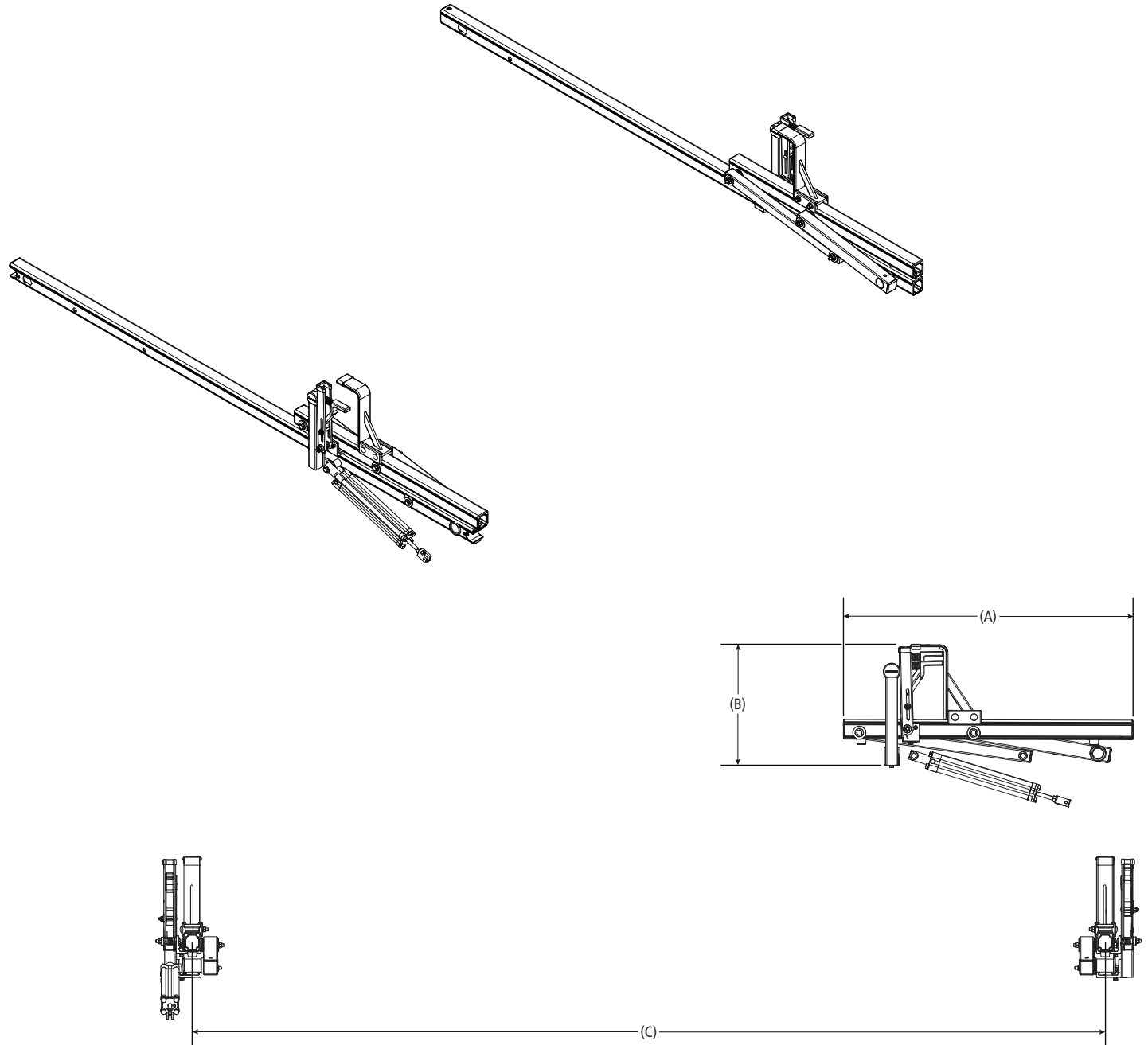
FEA-0002

Rotation-Rotation Module

Shown with Crossbars for illustrative purposes only

Approximate dimensions as shown:

A: Rotation Length 30.50"
 B: Rotation Height 13'
 C: Crossbar Spacing 4'-8'



Assembly Manual also available:

[FEA-0002](#)