

## FEA-0008

### RH/LH Clamp Down Module

Dimensional Specifications on Page 2

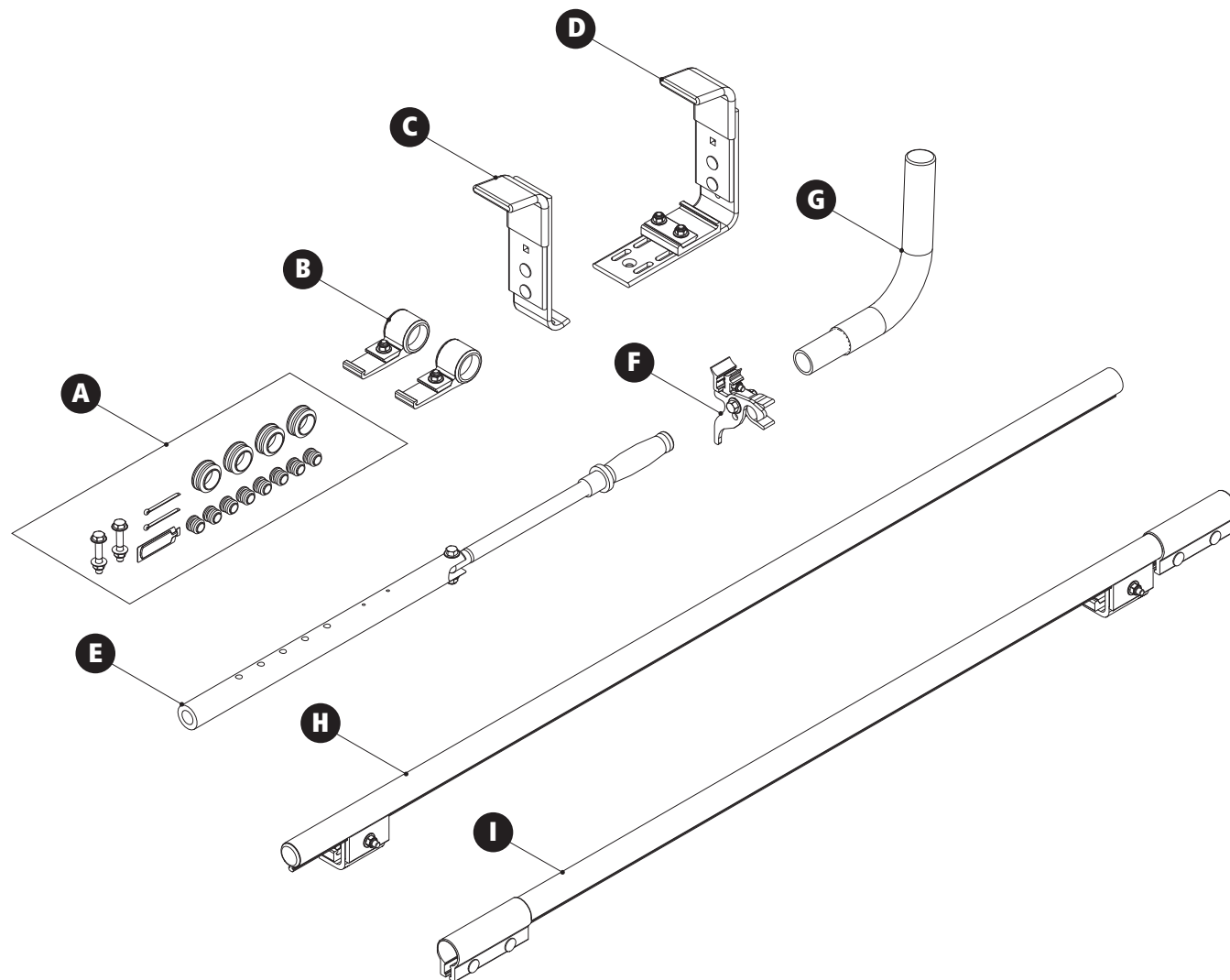
*Configuration as shown:*

4'–8' Clamp Down, Powder Coat Finish

Kit Weight: 25 lbs

- A: .....HKT-8403 Hardware Kit
- B: .....CDR-8151 Rear Bracket (x2)
- C: .....CDR-8813 Rear Clamp
- D: .....CDR-8044 Front Hook
- E: .....CDR-8826 Handle Assembly
- F: .....RKT-7891 Handle Clamp
- G: .....CDR-7215 Clamp Down Horn
- H: .....CDR-8400 Rear Tube
- I: .....CDR-8402 Front Tube

[Modular Assembly Manuals](#)



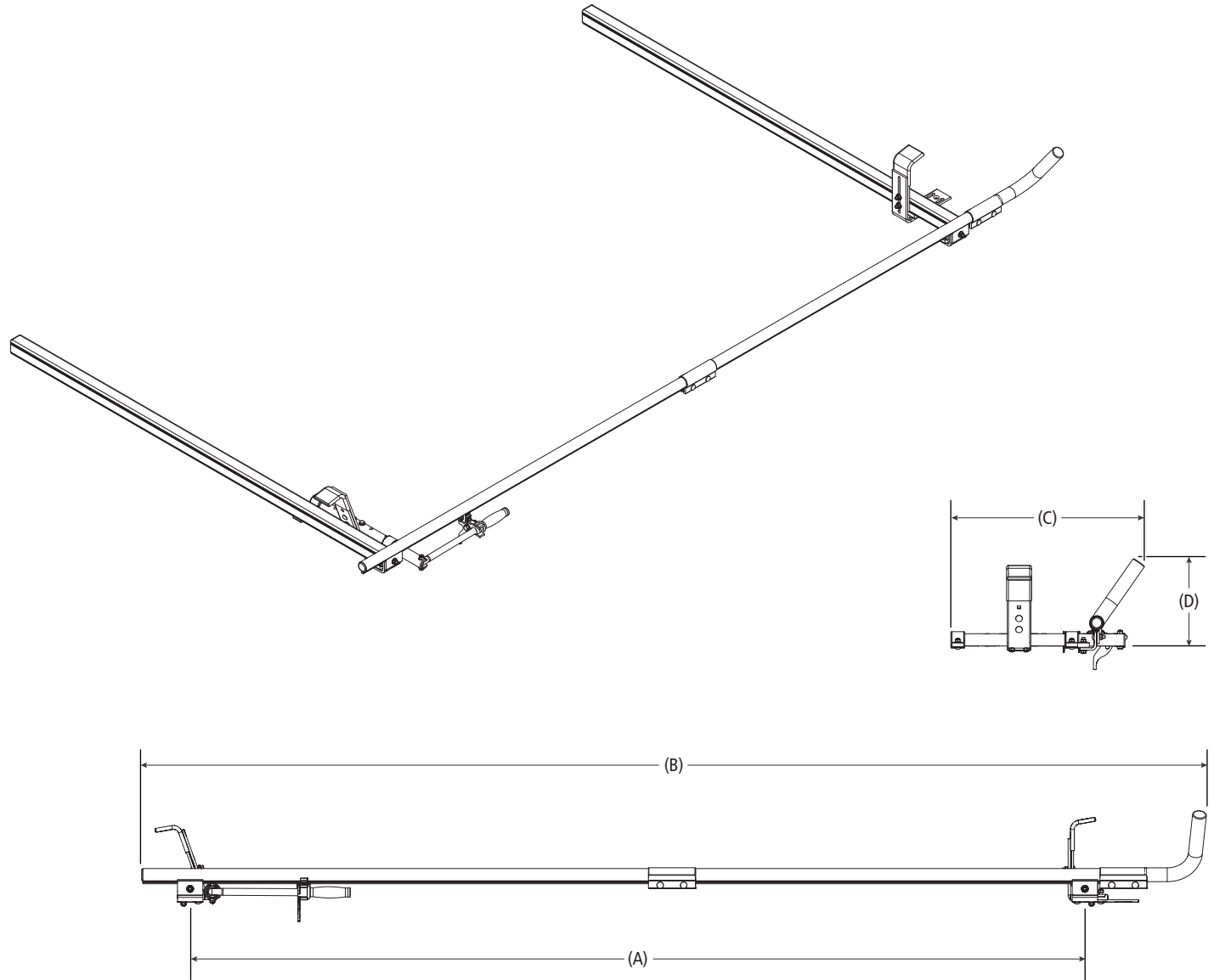
## FEA-0008

### RH/LH Clamp Down Module

*Shown with Crossbars for illustrative purposes only*

*Approximate dimensions as shown:*

A: Crossbar Spacing .....	8'
B: Length .....	114"
C: Width.....	20"
D: Height .....	9"



*Assembly Manual also available:*

[FEA-0008](#)

USOV-FEA0008-US01 Rev-C 1221