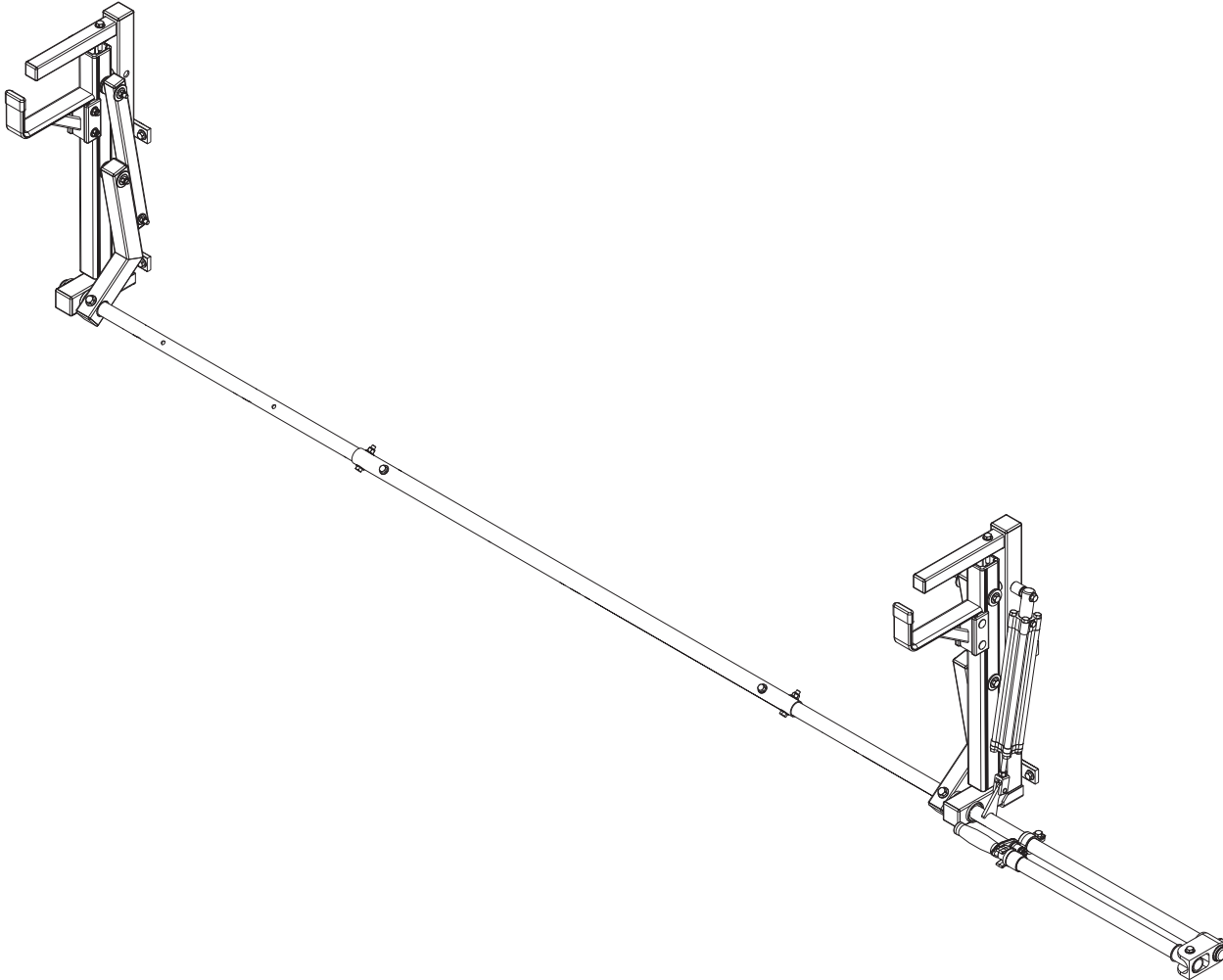


PRIME DESIGN™

A Safe Fleet Brand

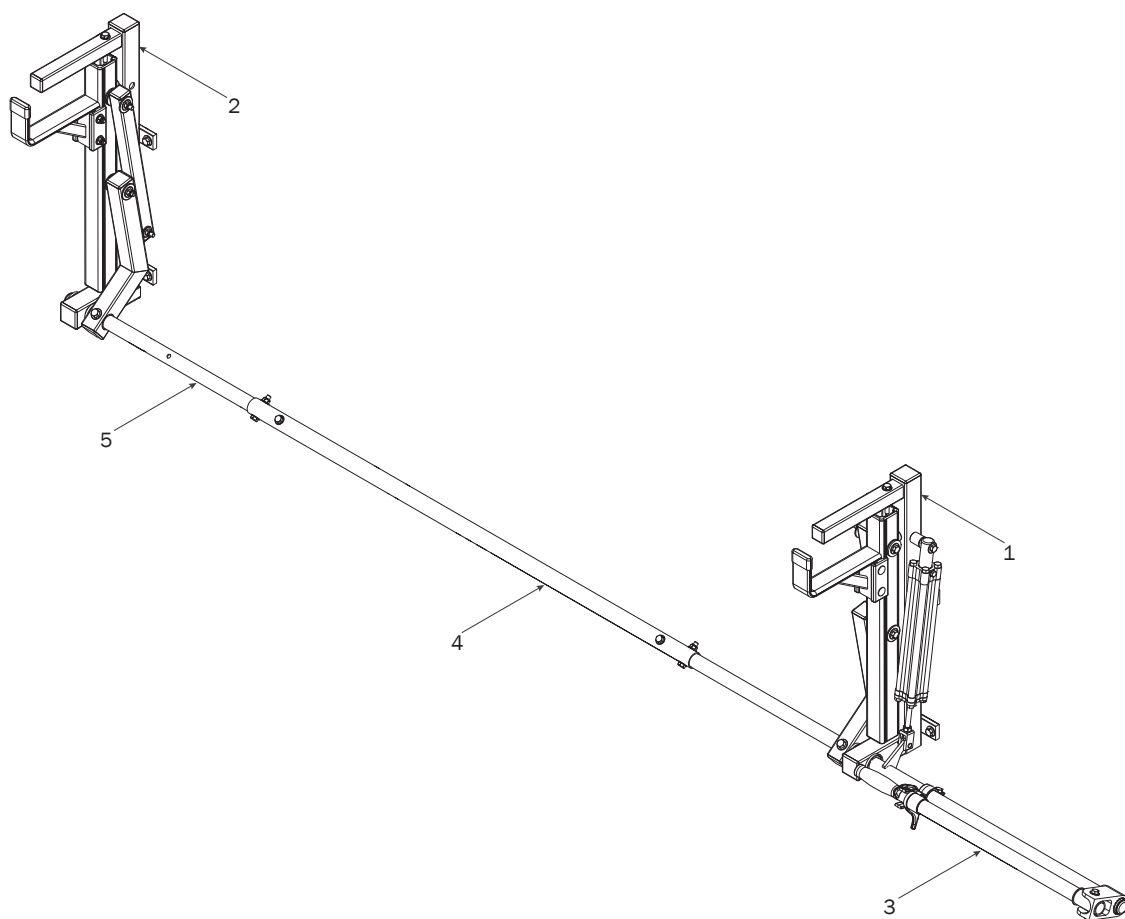


11521
XAN

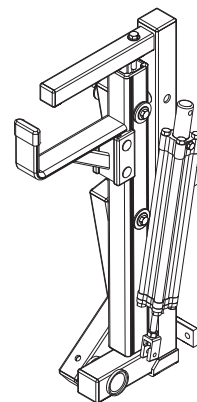
PRIME DESIGN, A SAFE FLEET BRAND

Address: 580 Opperman Drive, Eagan, MN 55123 • Toll Free: 1.8.PRIME.RACK
Fax: 651-552-1799 • Email: info@primedesign.net • Website: www.primedesign.net

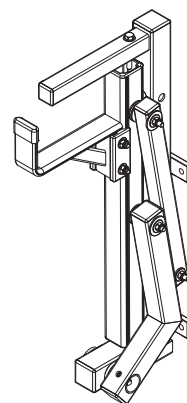
CONTENTS OVERVIEW



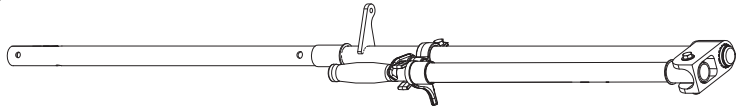
1—Rear Rotation Assembly..... (Qty 1)



2—Front Rotation Assembly..... (Qty 1)



3—Rear Drive Shaft..... (Qty 1)
Left Hand, 50.00"



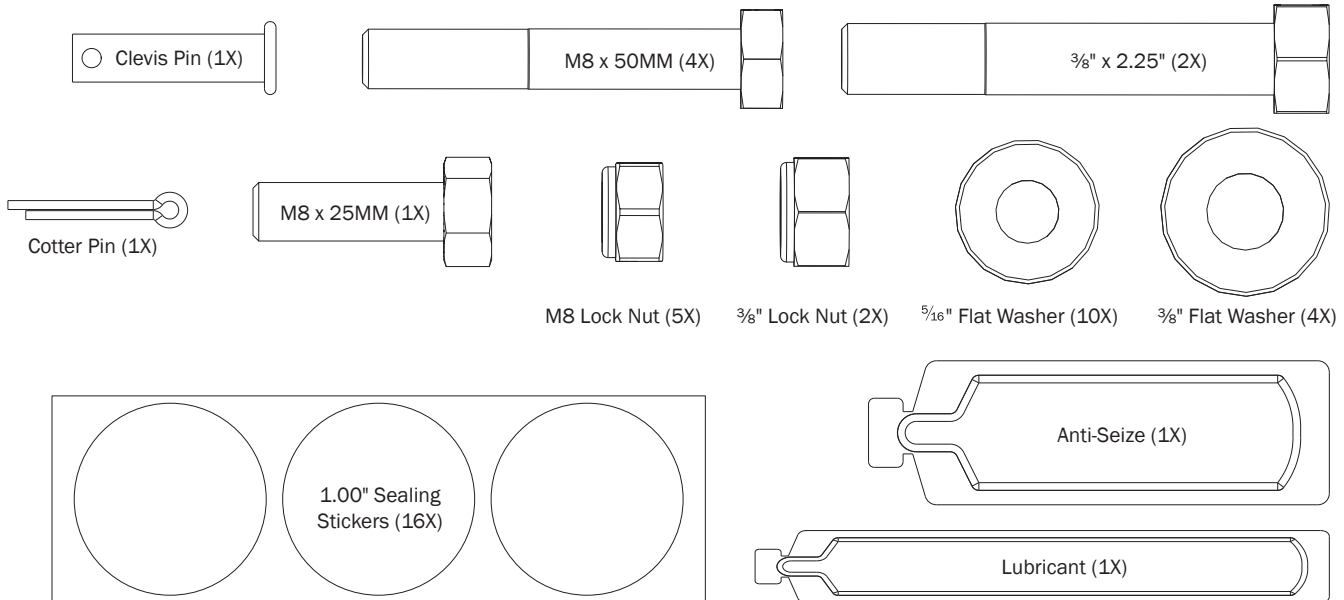
4—Connecting Bar..... (Qty 1)
48.00"



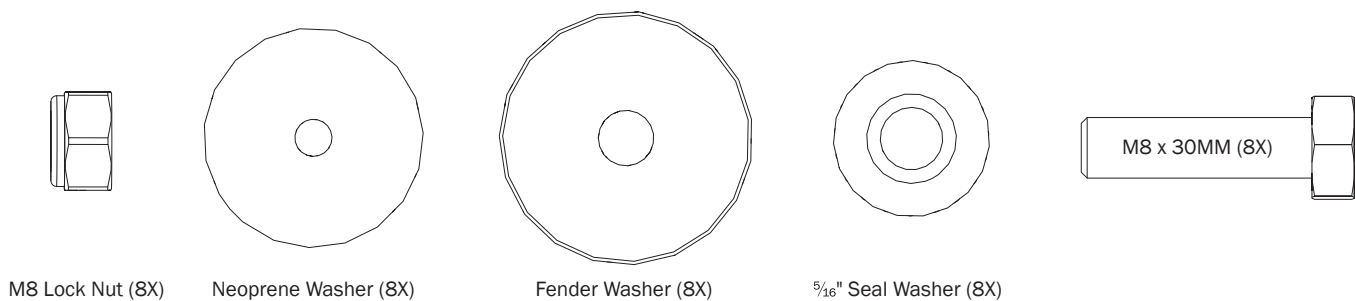
5—Front Drive Shaft..... (Qty 1)
B Version, 35.75"



HKT-8163-Rotation Hardware Kit

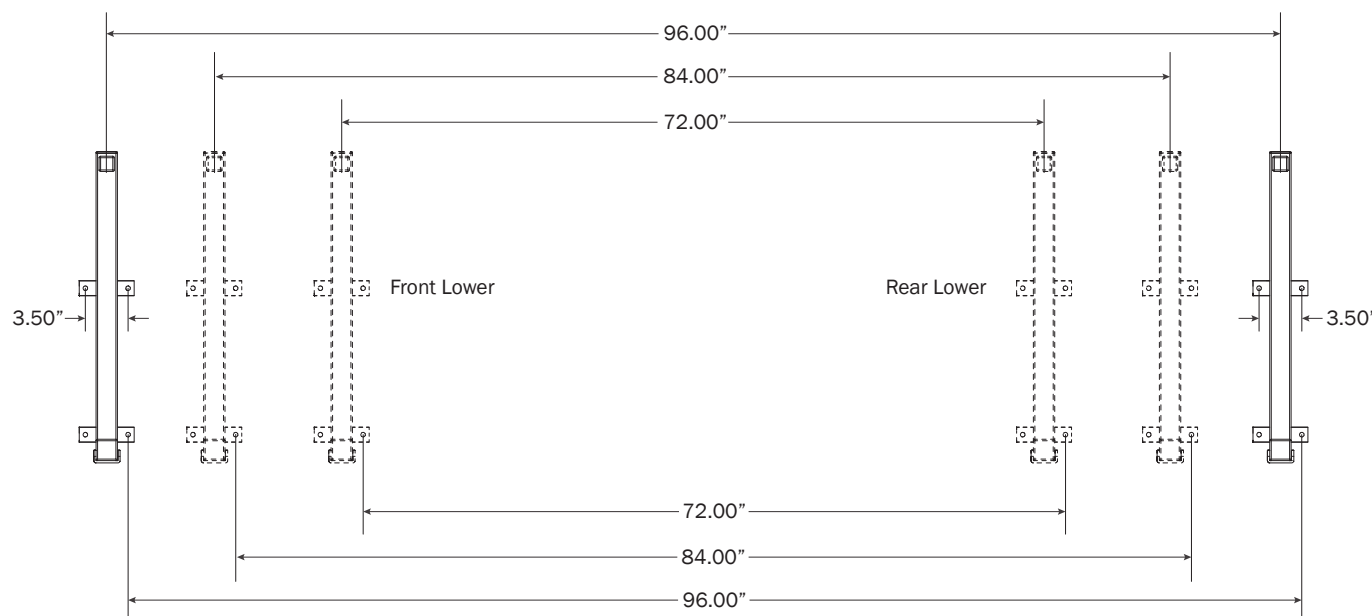


Mounting Hardware

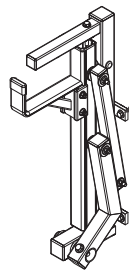


UTILITY BODY MOUNTING

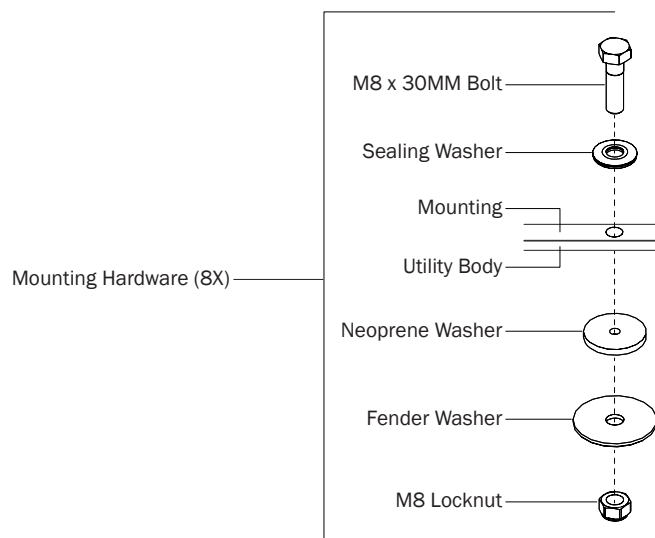
- 0.1** 6.00-8.00 Ft: Drill holes into the Service Body mounting location according to dimensions shown.



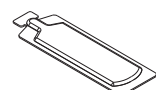
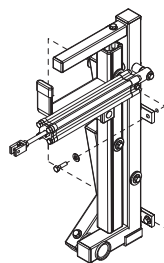
- 0.2** Position and align the vertical Uprights until the mounting holes realign to the body holes drilled during Steps 0.1.

**0.3**

Using the fastening hardware shown below, attach the vertical Uprights to the Utility Body. The Neoprene Washer, Fender Washer, and Locknut install from the inside of the Utility Body in the order shown, while the Bolt and Seal Washer install from the outside.

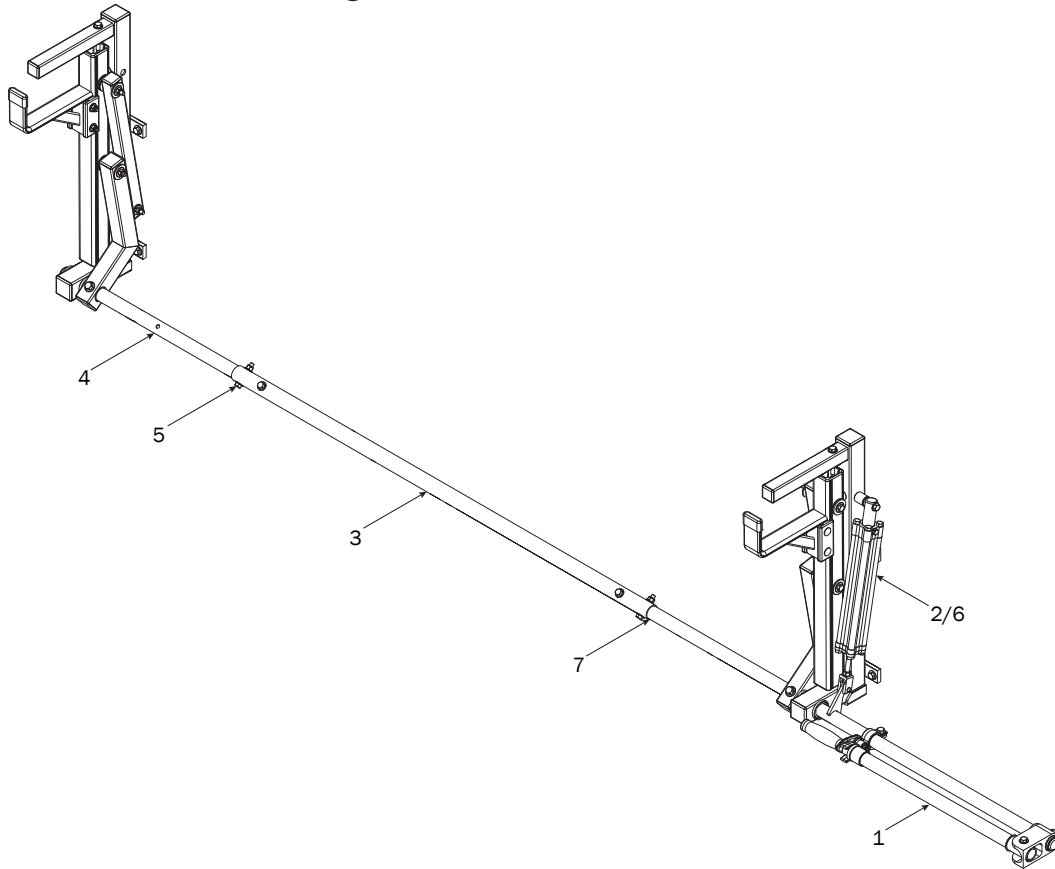
**0.4**

Torque to 90 in-lbs

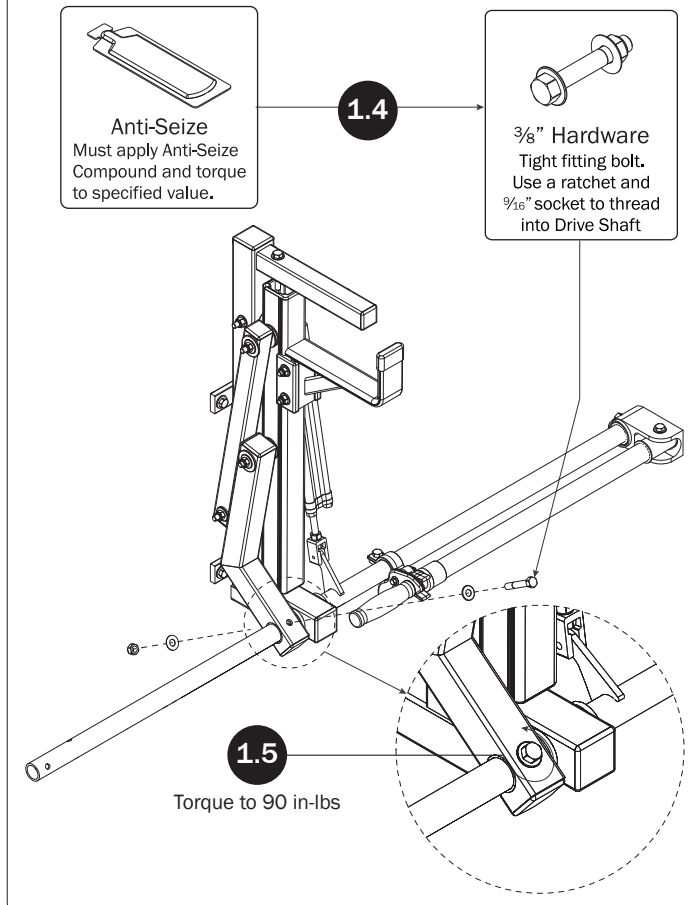
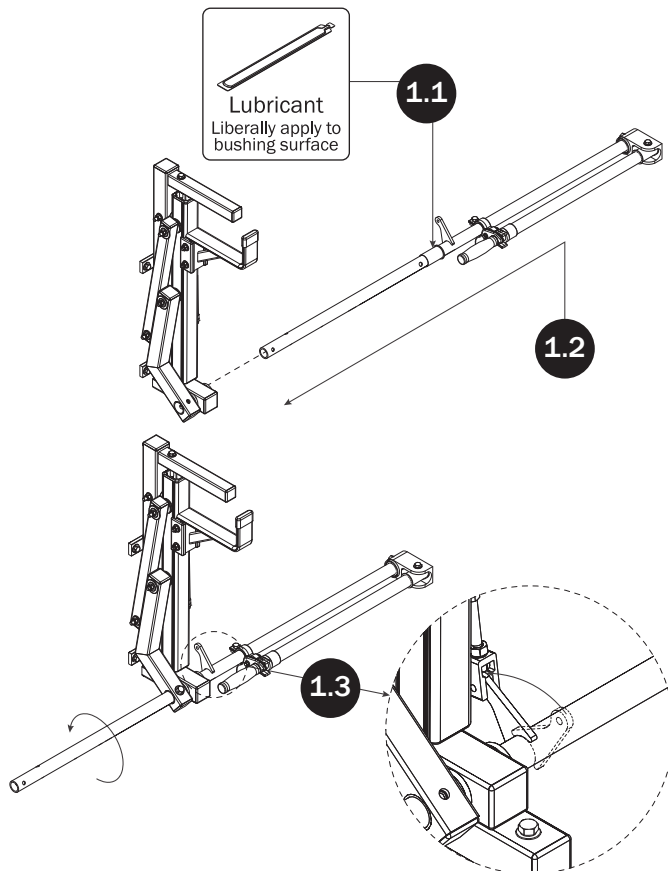


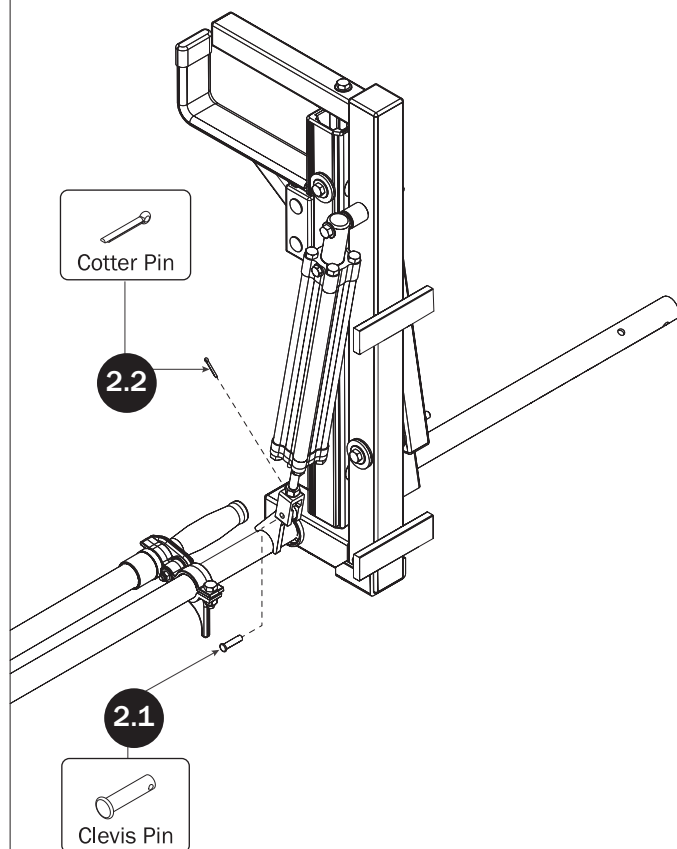
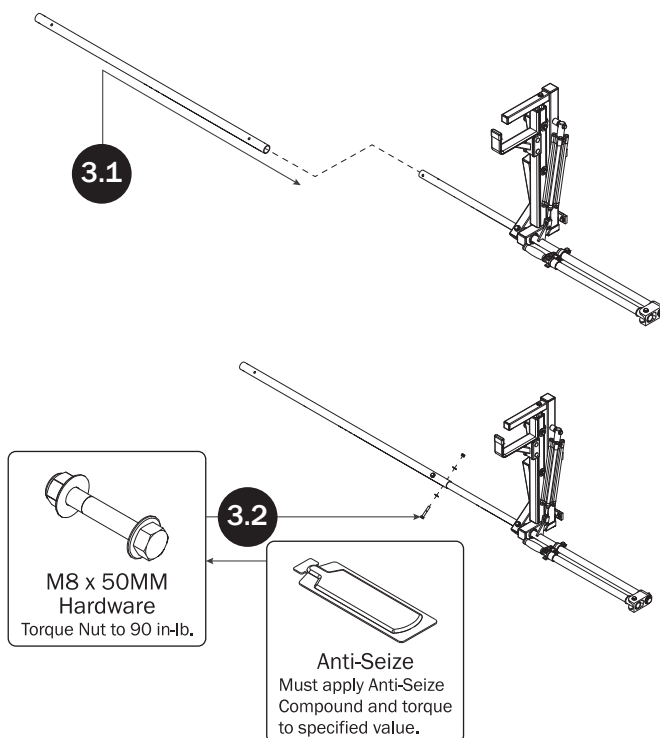
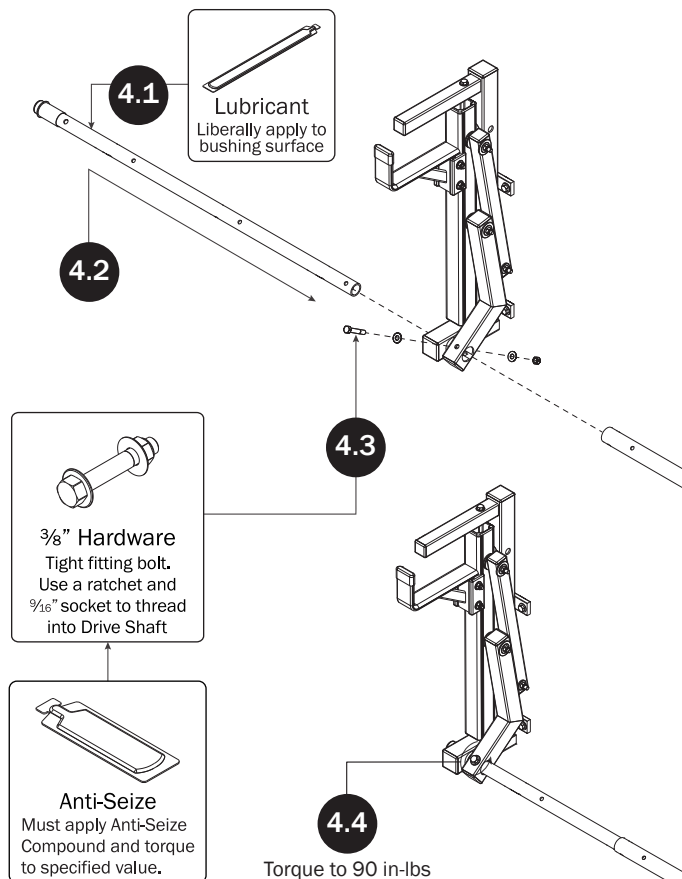
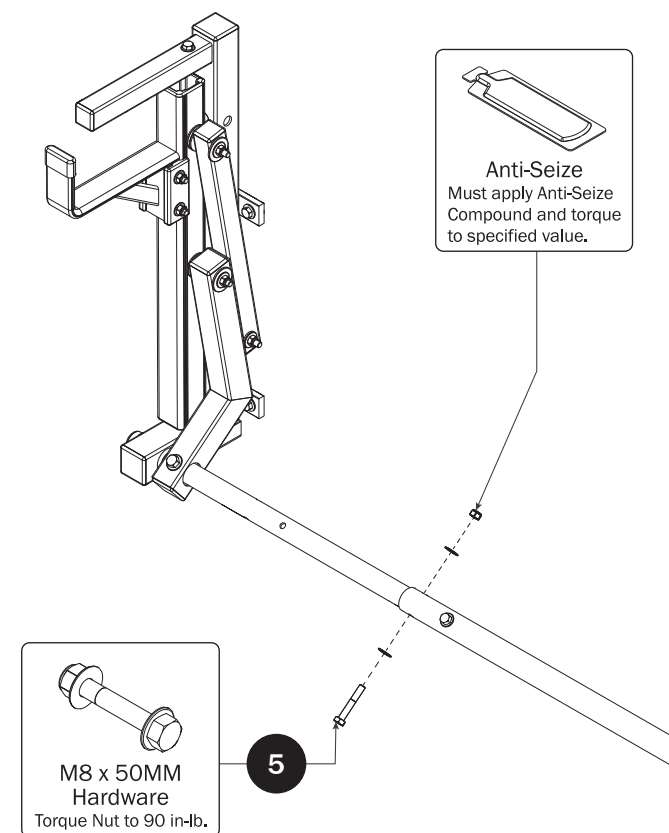
Anti-Seize
Must apply Anti-Seize Compound and torque to specified value.

LEFT ROTATION ASSEMBLY SEQUENCE

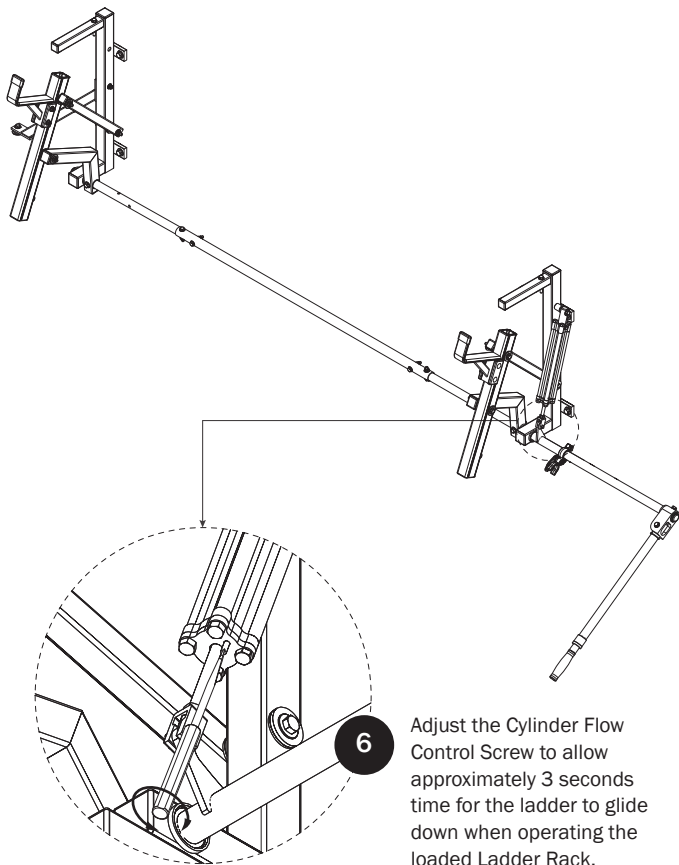


REAR DRIVE SHAFT



CYLINDER HARDWARE**CONNECTING BAR****FRONT DRIVE SHAFT****CONNECTING BAR FASTENERS**

CYLINDER ADJUSTMENT



Adjust the Cylinder Flow Control Screw to allow approximately 3 seconds time for the ladder to glide down when operating the loaded Ladder Rack.

DRIVE SHAFT SEALING

