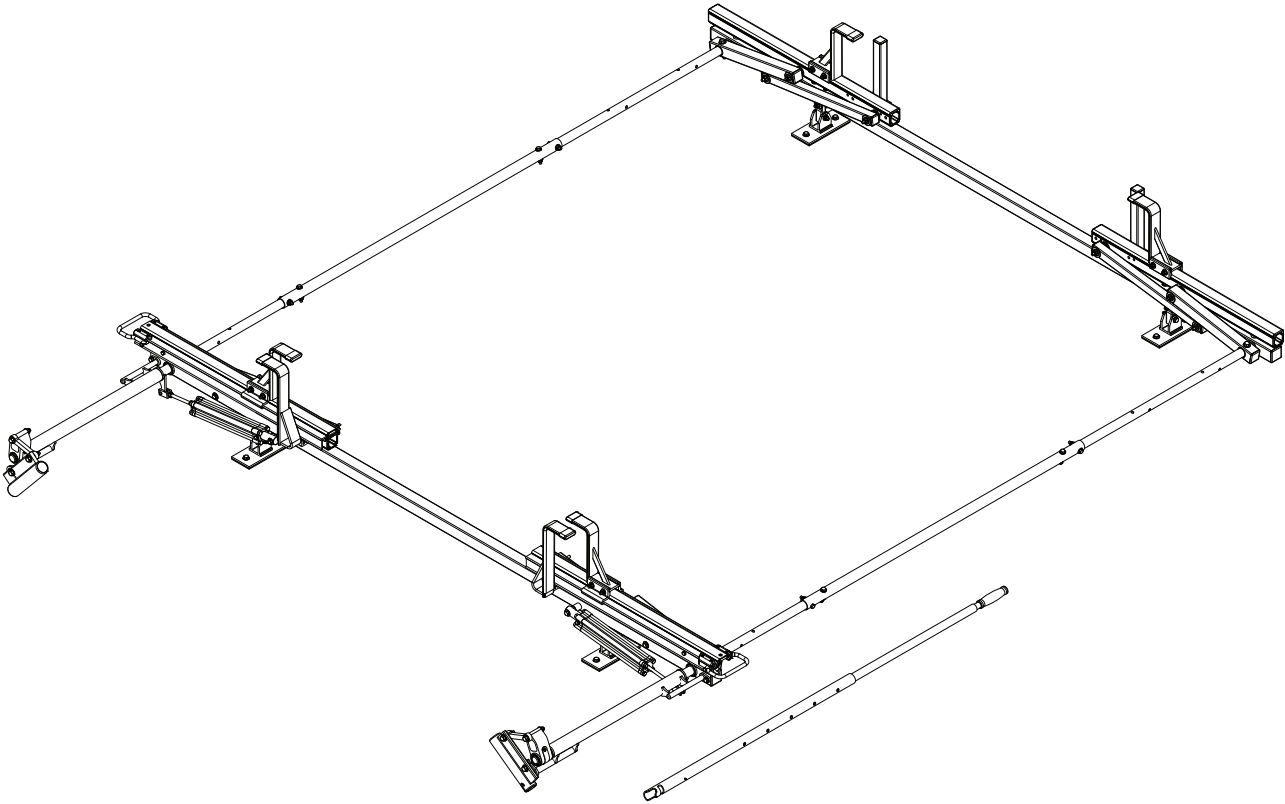


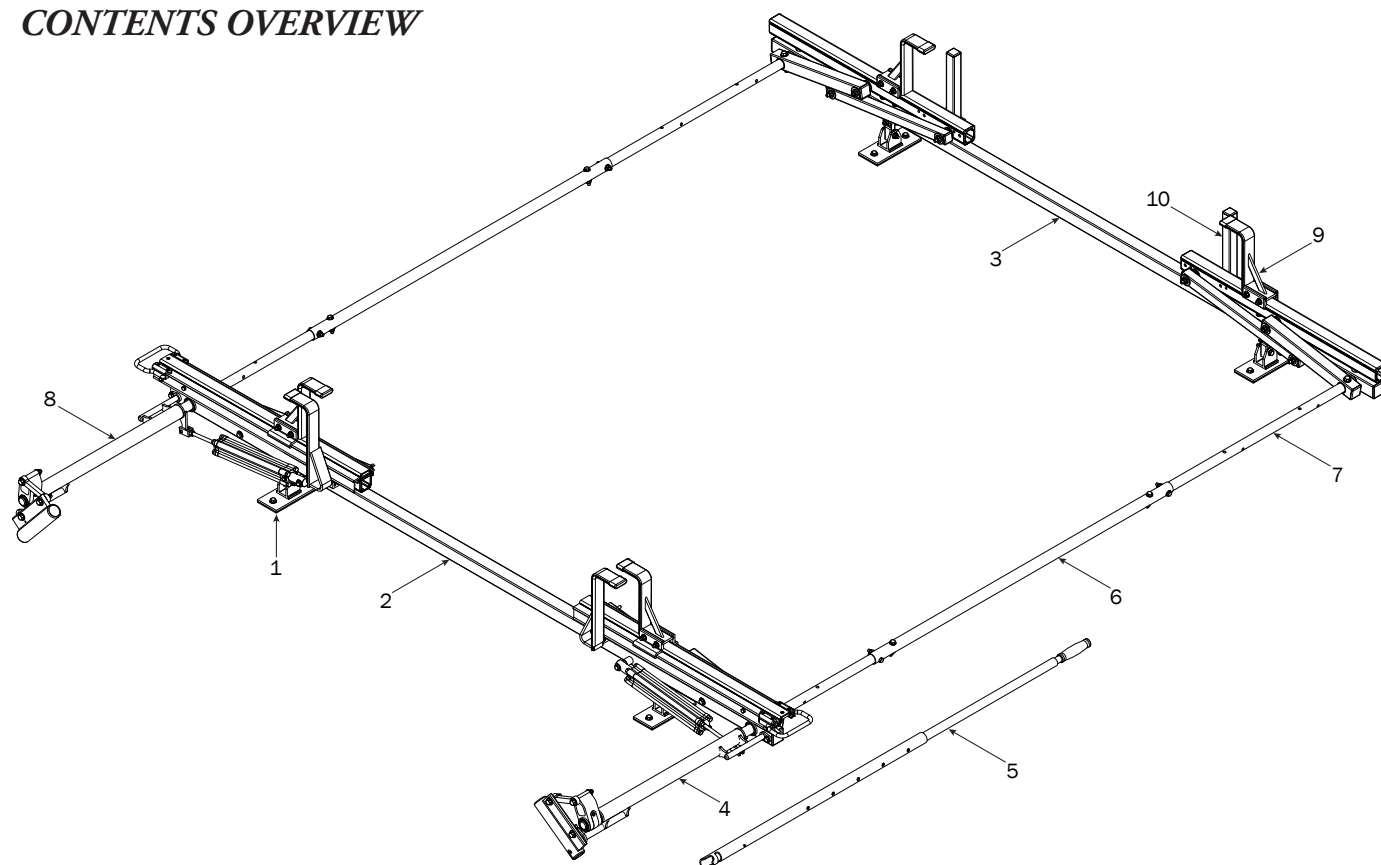
**PRIME DESIGN™**

A Safe Fleet Brand

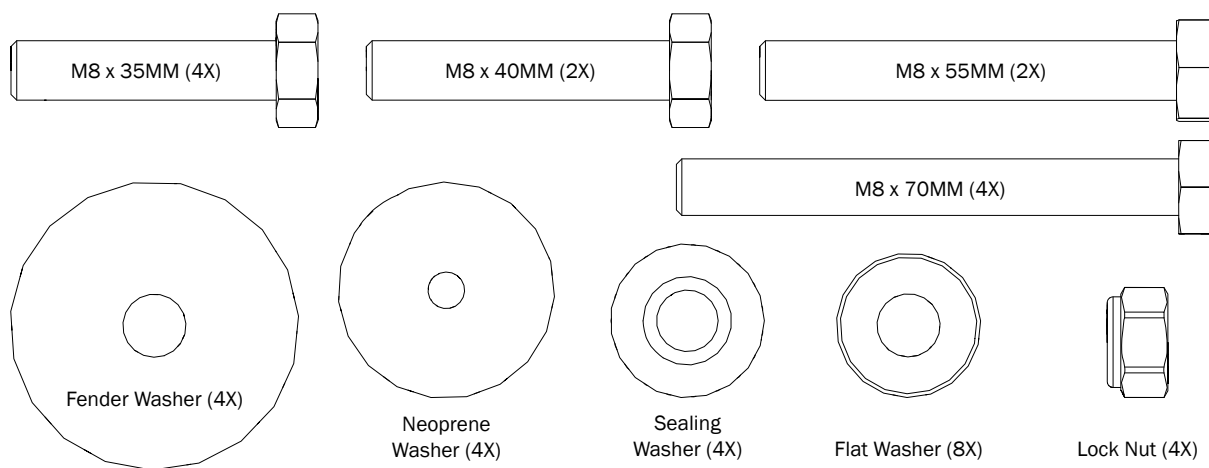
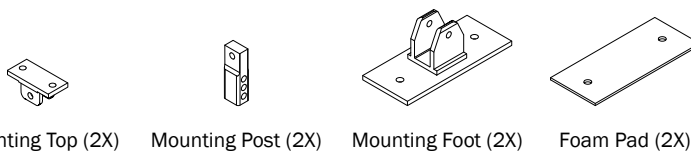


**HRR-269-E-UM3** 96

## CONTENTS OVERVIEW



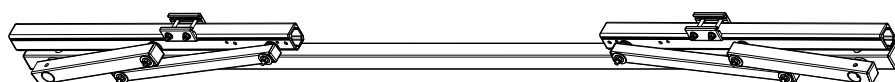
1—MTG-8003..... (Qty 2)  
Mounting Feet w/HKT-8129



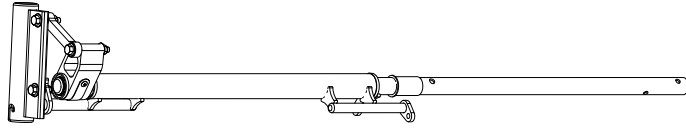
2—Rear Crossbar Assembly..... (Qty 1)



3—Front Crossbar Assembly..... (Qty 1)



- 4—Rear Drive Shaft ..... (Qty 1)  
Right Hand, A Version, 50.00"



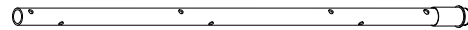
- 5—HHR Handle Assembly ..... (Qty 1)  
35.00"



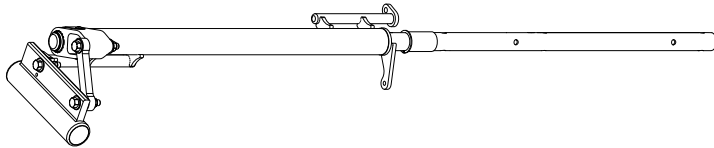
- 6—Connecting Bar ..... (Qty 2)  
48.00"



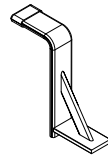
- 7—Front Drive Shaft ..... (Qty 2)  
B Version, 35.75"



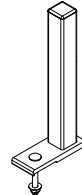
- 8—Rear Drive Shaft ..... (Qty 1)  
Left Hand, A Version, 50.00"



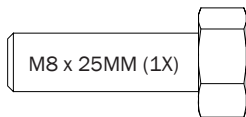
- 9—Z Post ..... (Qty 2)  
Adjustment, 7.25"



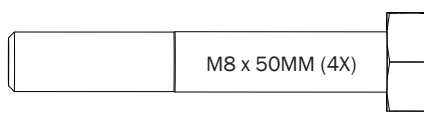
- 10—L Post ..... (Qty 2)  
Square Cap, 9.25"



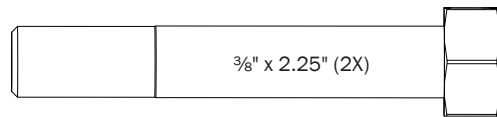
- 11—HKT-8163 (Not called out in Overview)..... (Qty 2)



M8 x 25MM (1X)



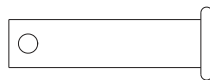
M8 x 50MM (4X)



3/8" x 2.25" (2X)



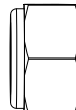
Cotter Pin (1X)



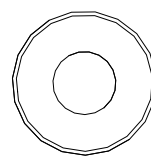
Clevis Pin (1X)



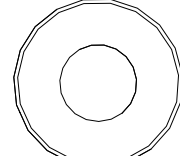
M8 Lock Nut (5X)



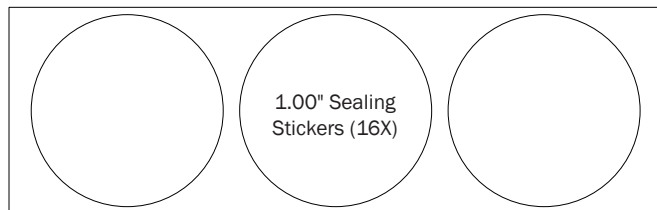
3/8" Lock Nut (2X)



5/16" Flat Washer (10X)



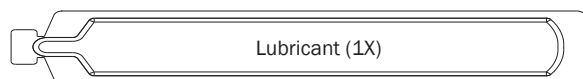
3/8" Flat Washer (4X)



1.00" Sealing  
Stickers (16X)



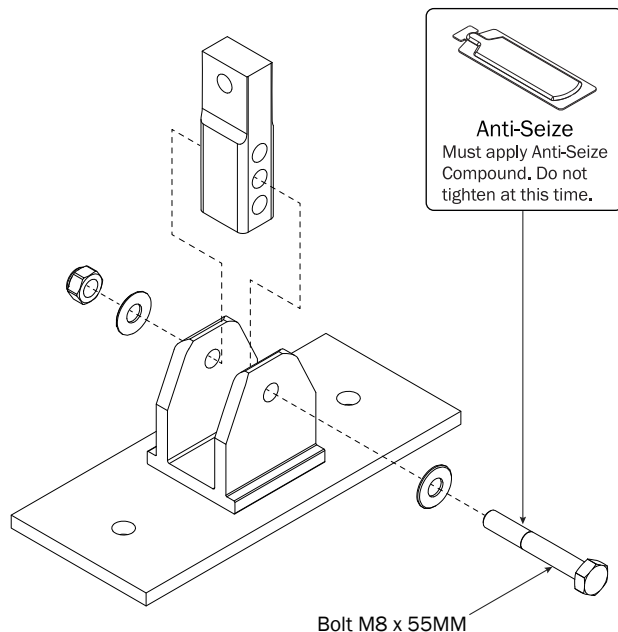
Anti-Seize (1X)



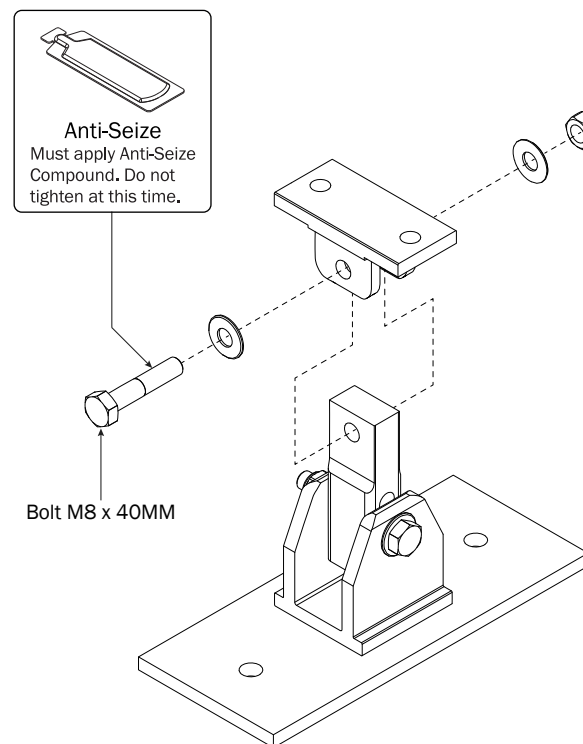
Lubricant (1X)

**MTG-8003****MOUNTING BRACKETS TO ROOF****0.1**

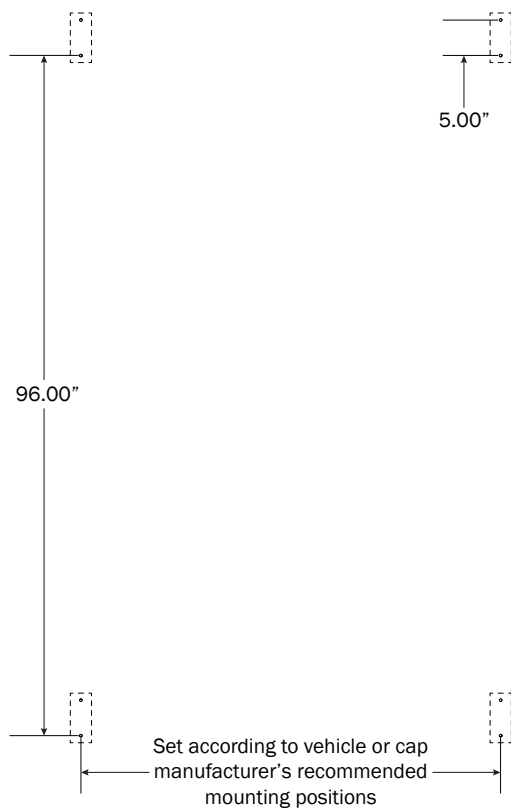
Assemble the Mounting Post to the Mounting Foot using the hardware as shown below.

**0.2**

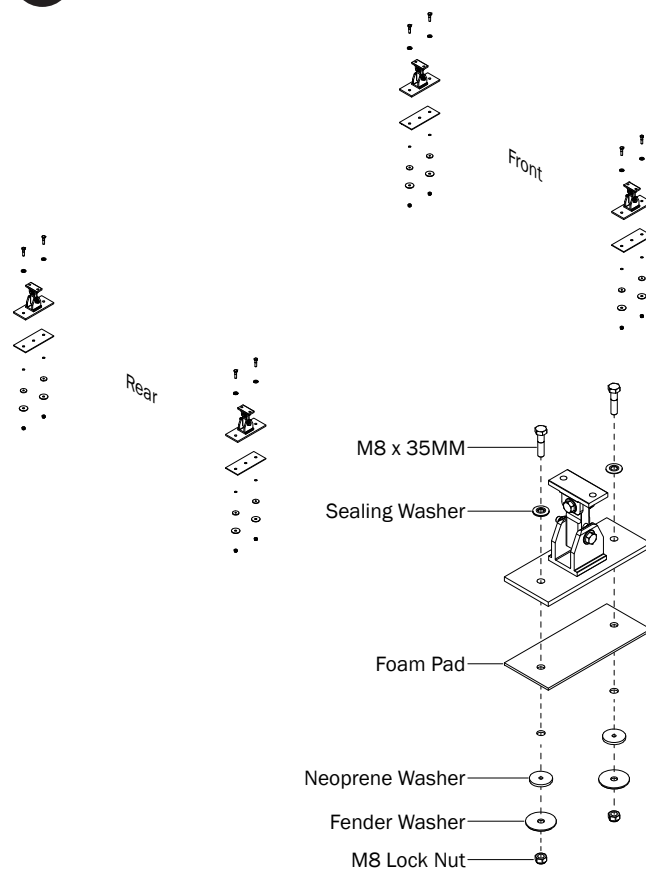
Assemble the Mounting Top to the Mounting Post using the hardware as shown below.

**0.3**

Drill bolt holes according to the dimensions shown.

**0.4**

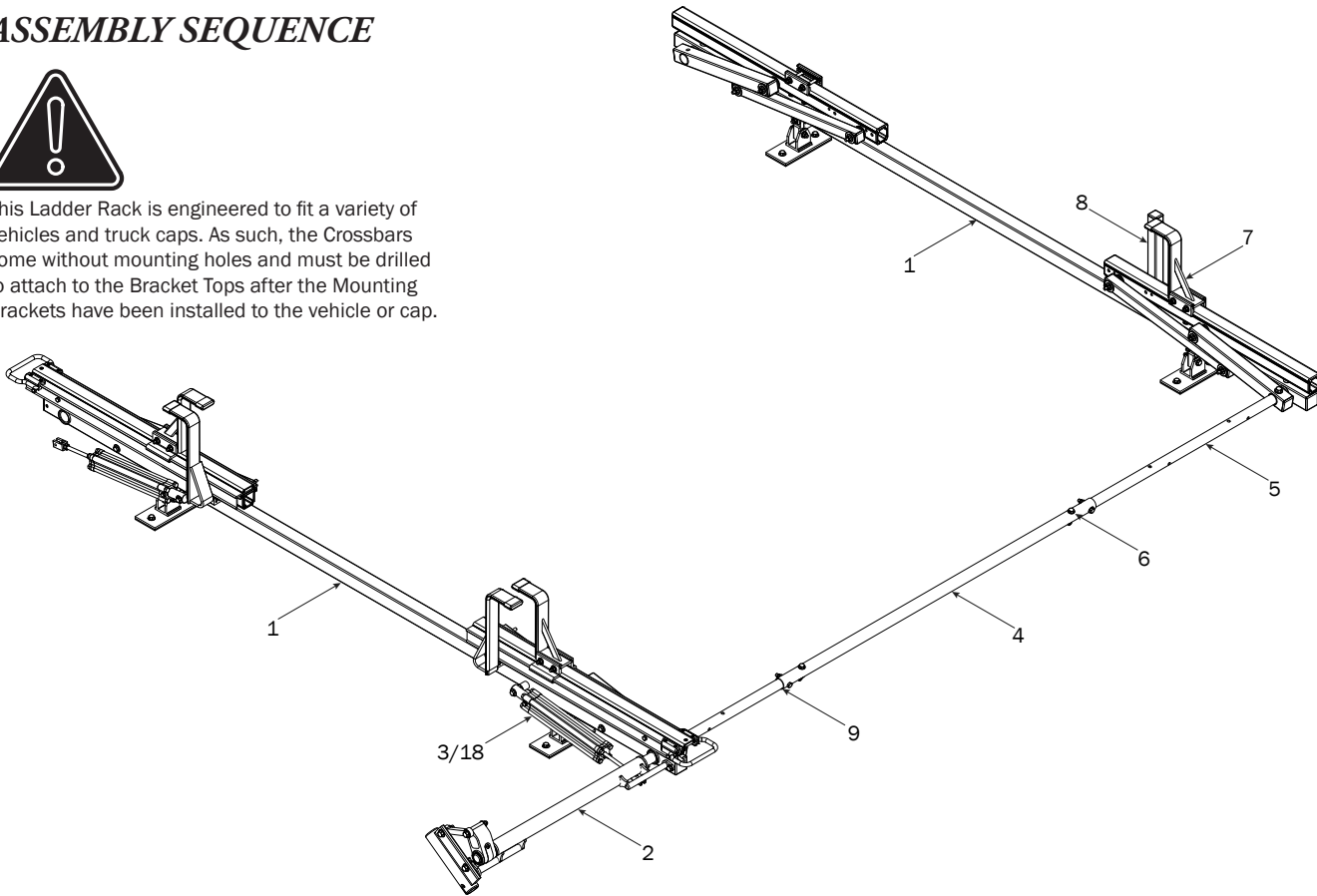
Assemble onto vehicle roof as shown, then torque the Mounting Bracket nuts to 130 in-lbs.



## RIGHT ROTATION ASSEMBLY SEQUENCE

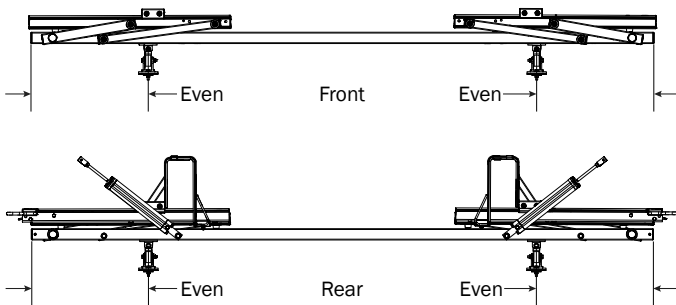


This Ladder Rack is engineered to fit a variety of vehicles and truck caps. As such, the Crossbars come without mounting holes and must be drilled to attach to the Bracket Tops after the Mounting Brackets have been installed to the vehicle or cap.



### CROSSBARS

#### 1.1 Center the Front and Rear Crossbars onto Mounting Brackets.



#### 1.2

Measure the distance from the Crossbar's end to the outer hole of the Mounting Top. Using a grease pencil, mark the location of the hole and mark another one at exactly 2.00" on center from the first hole.

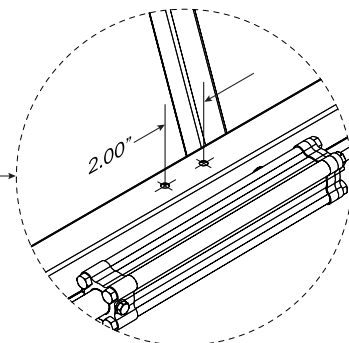
L Post holes

#### 1.3

Prior to drilling, mark a center line along the length of the Crossbar to ensure the holes are correctly centered. The marks must align to the pre-drilled factory L Post holes.

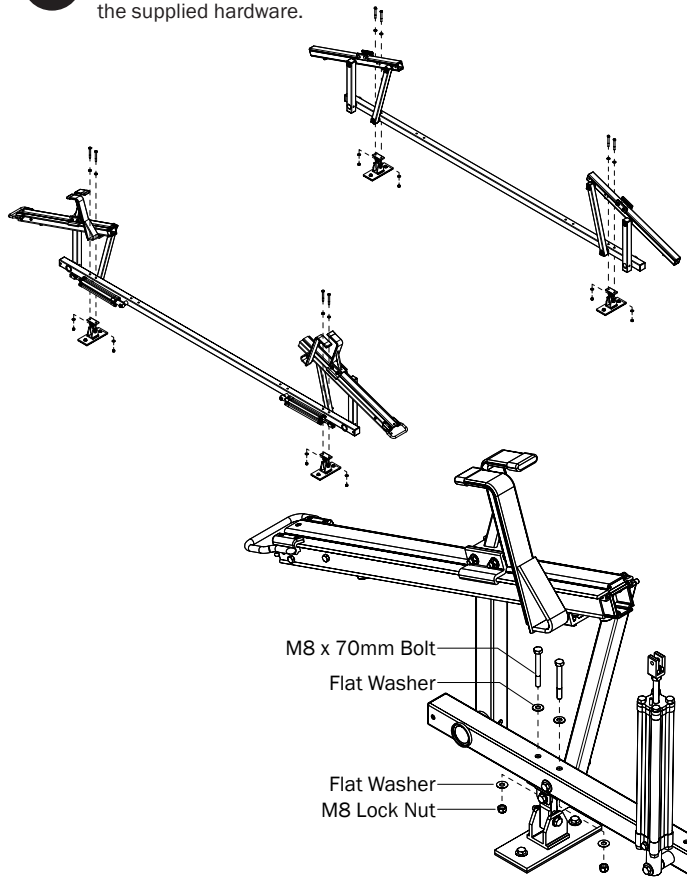
#### 1.4

Drill holes using a 3/8" steel drill bit.



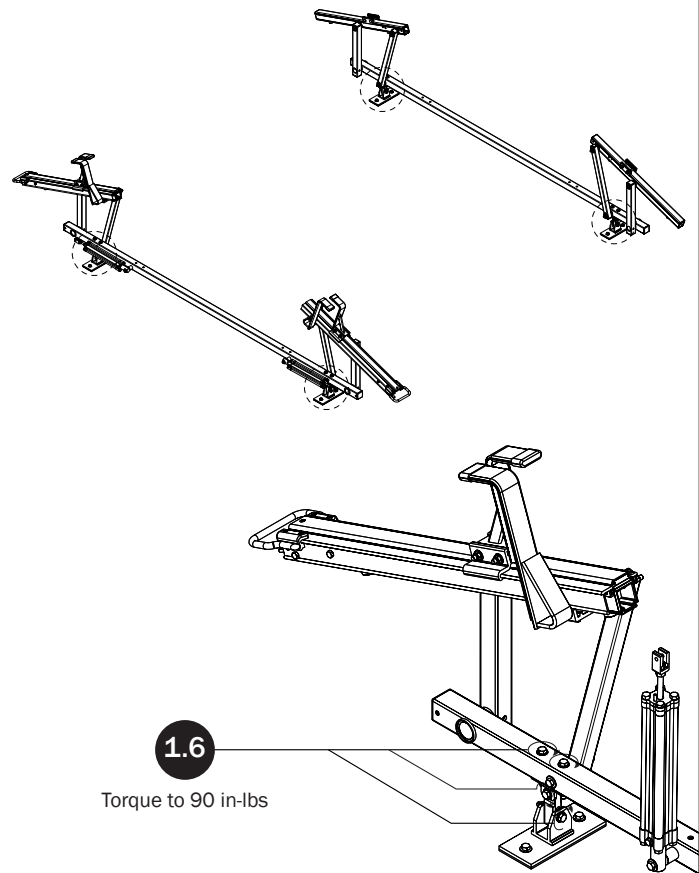
1.5

Attach the Crossbars to the Mounting Brackets using the supplied hardware.



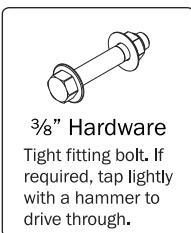
1.6

Torque to 90 in-lbs



### REAR DRIVE SHAFT

2.1

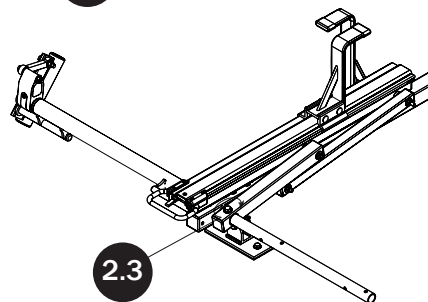


2.2

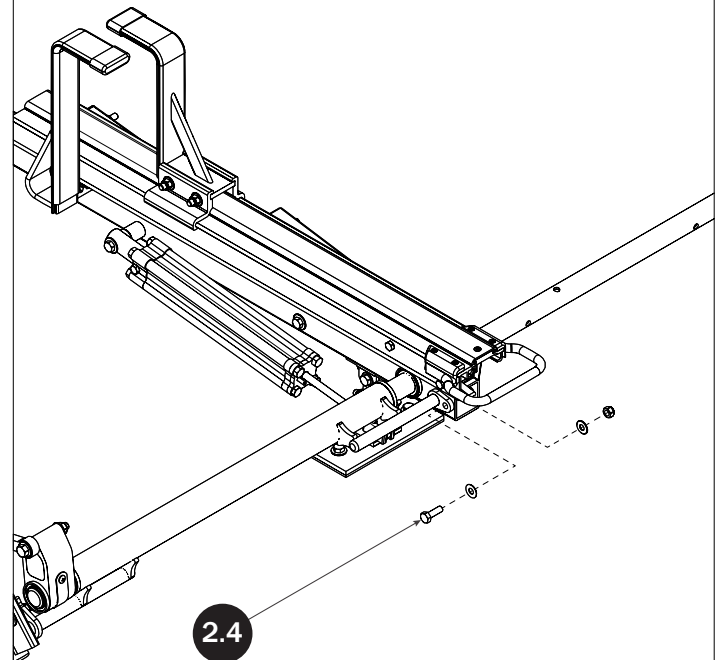


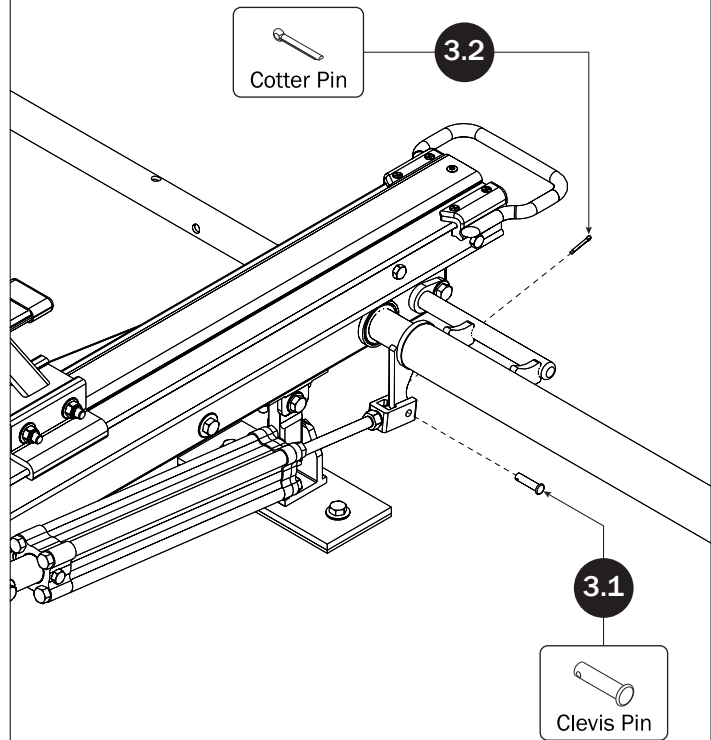
2.3

Torque to 90 in-lbs

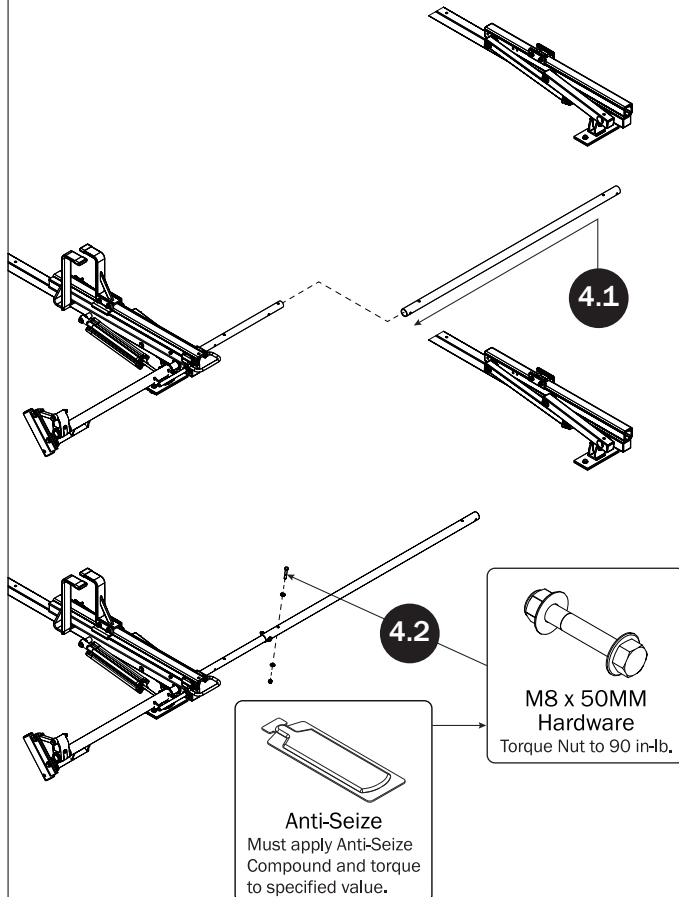
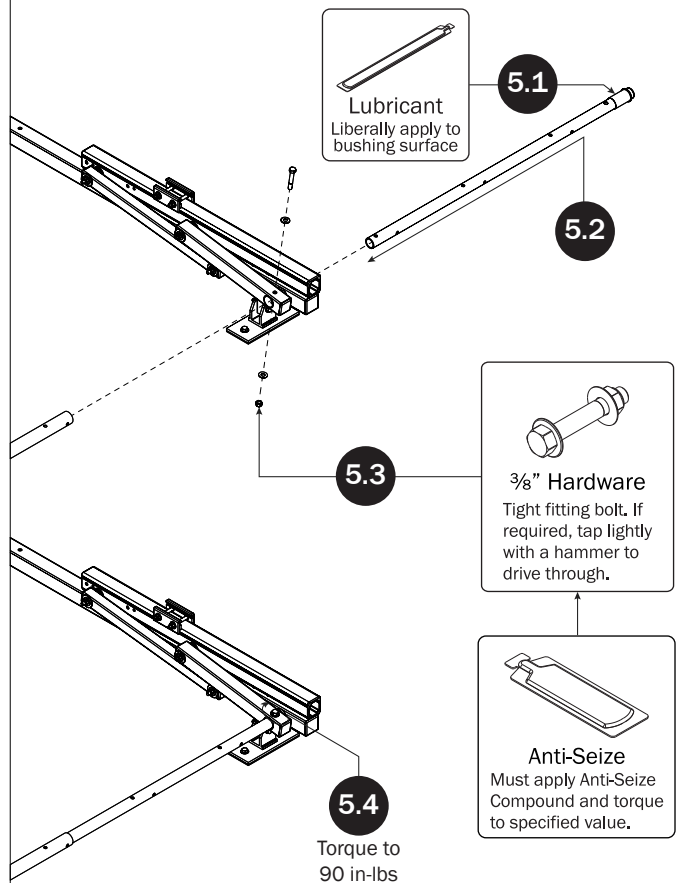


2.4



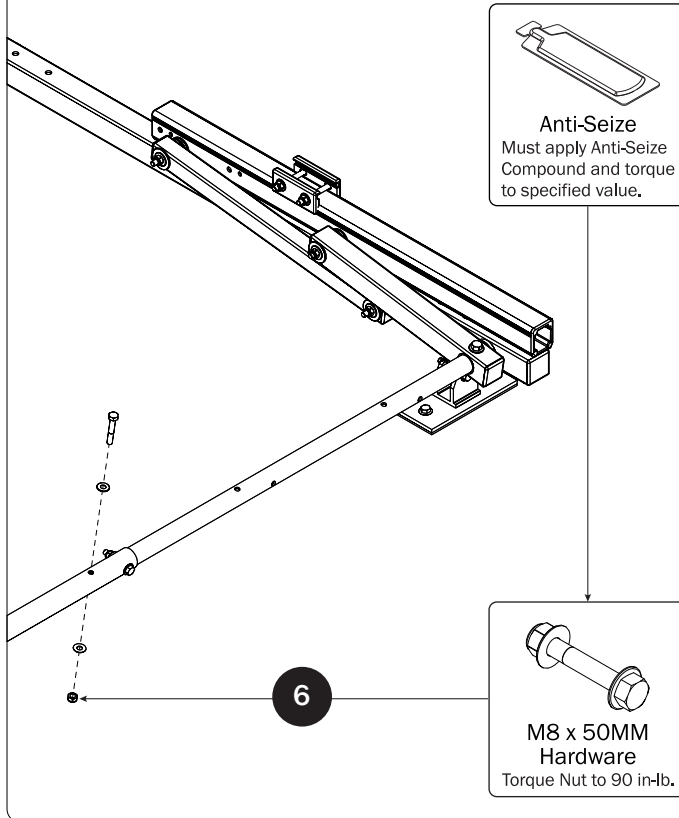
**CYLINDER HARDWARE****2.5**

Push the Crossbar Cap into the Crossbar End as shown.

**CONNECTING BAR****FRONT DRIVE SHAFT**

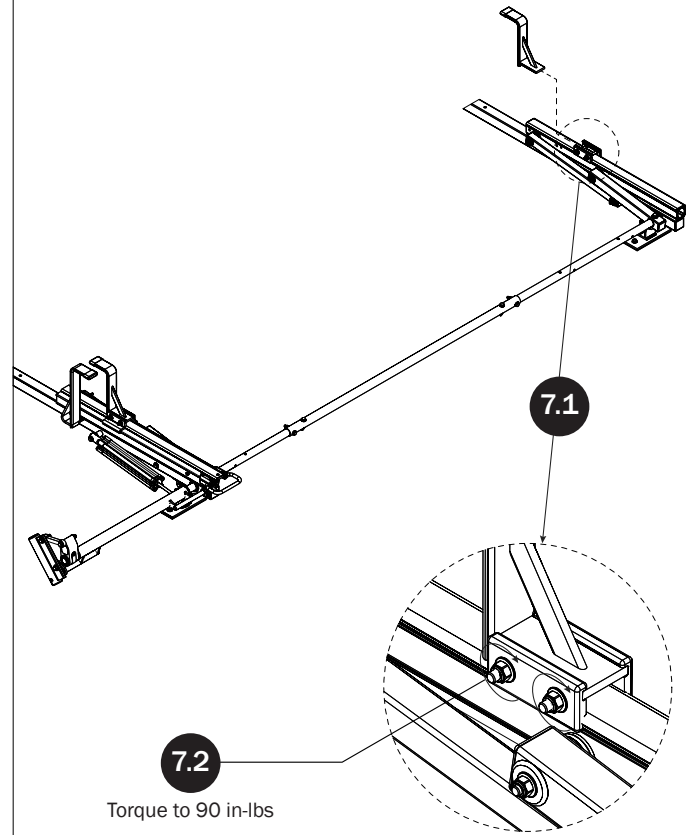


## CONNECTING BAR FASTENERS

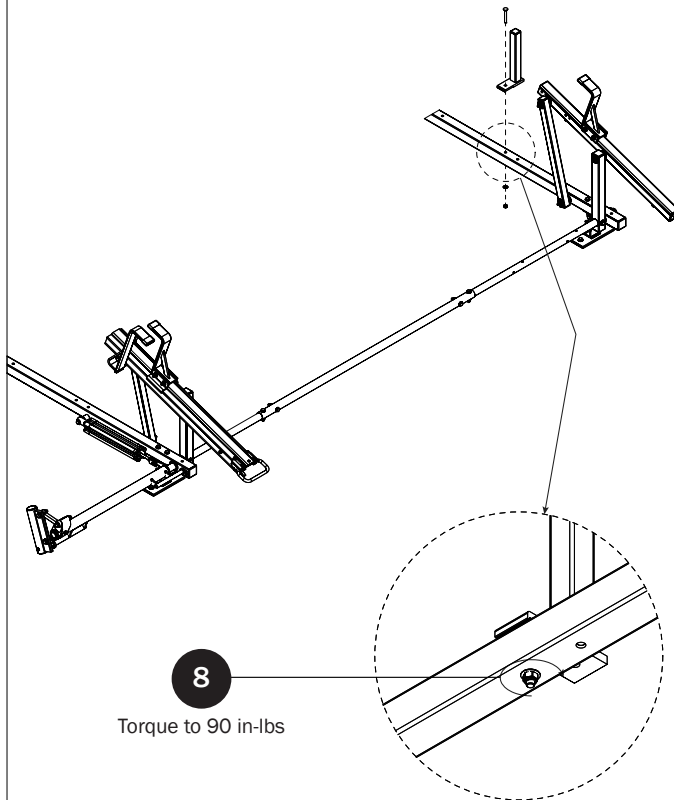


## Z POST

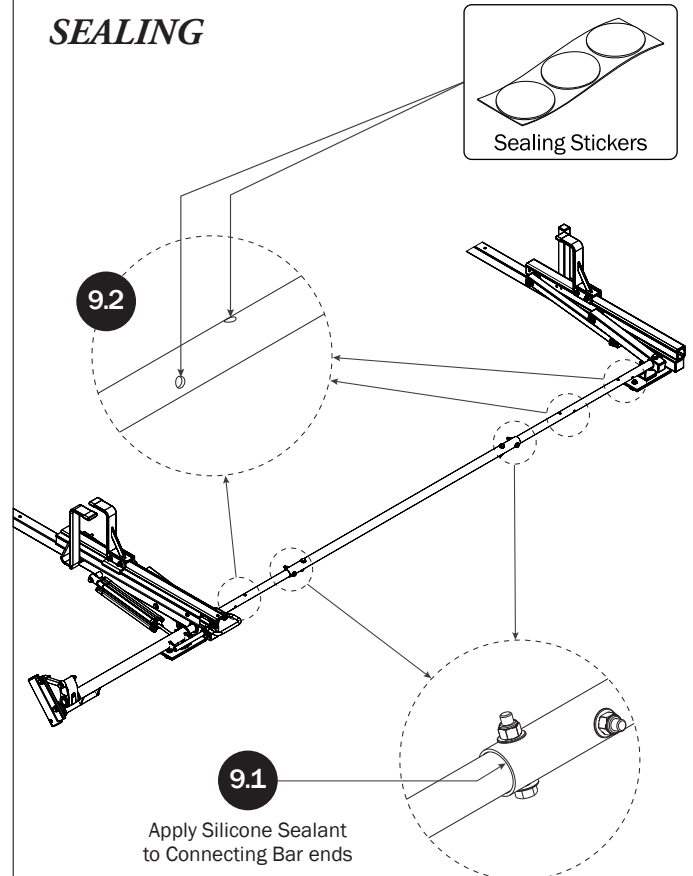
SEE QUICK START GUIDE FOR ADJUSTMENTS



## L POST

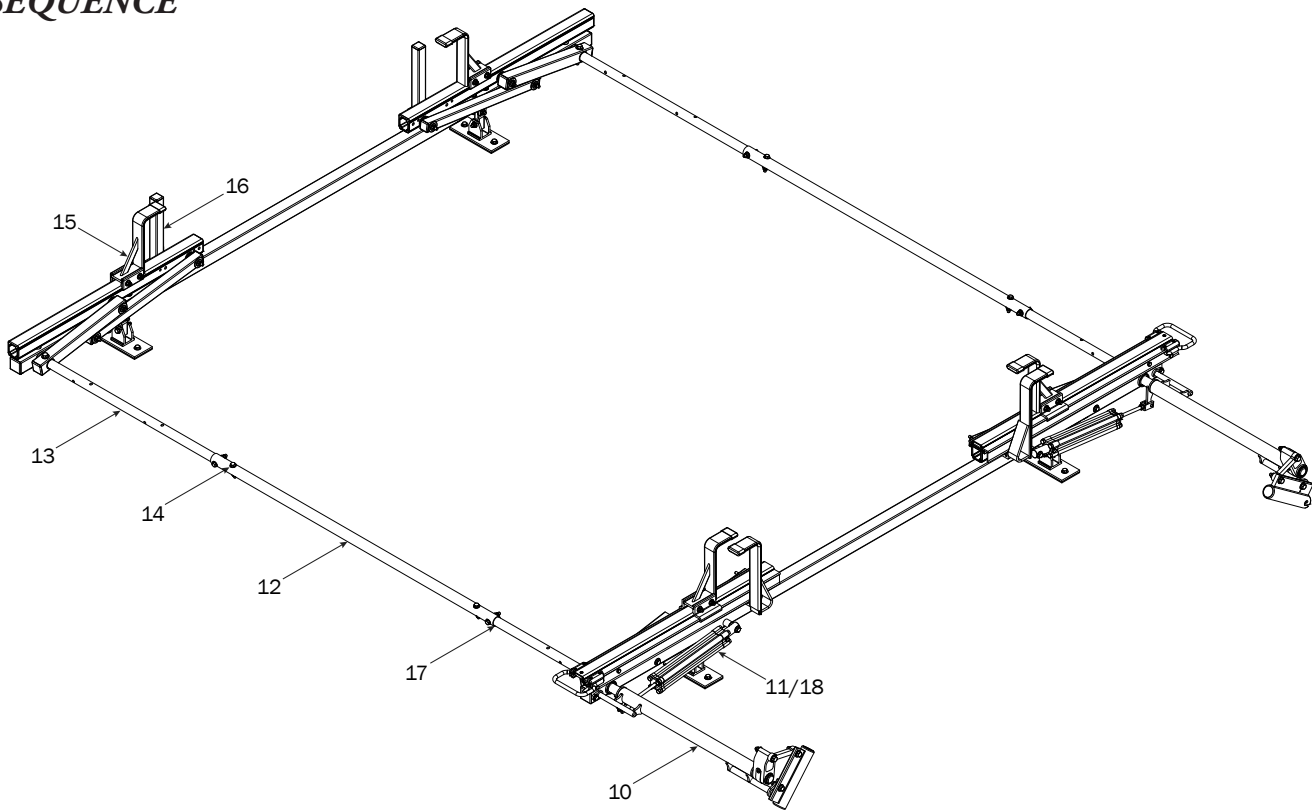


## DRIVE SHAFT SEALING

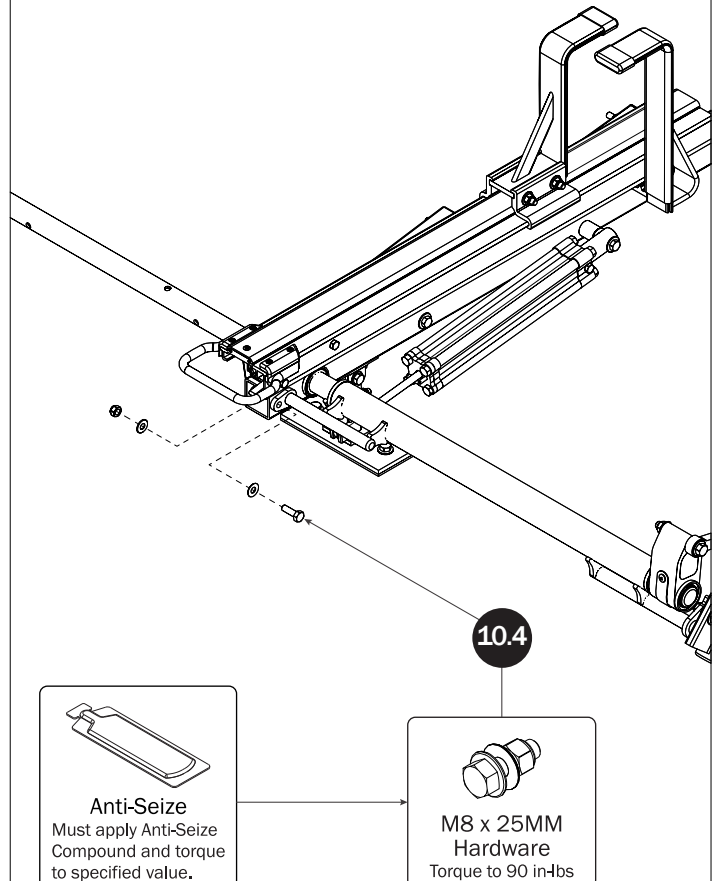
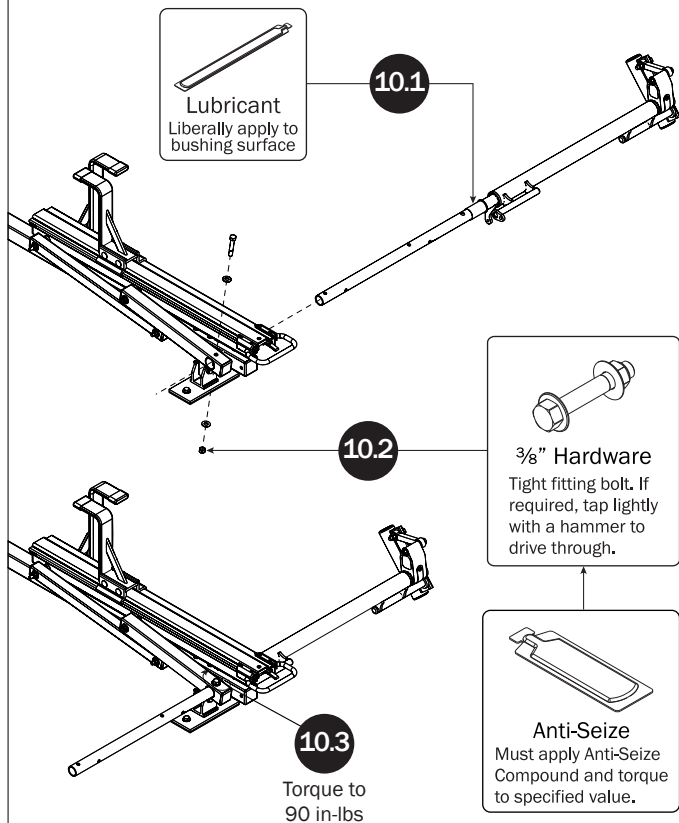


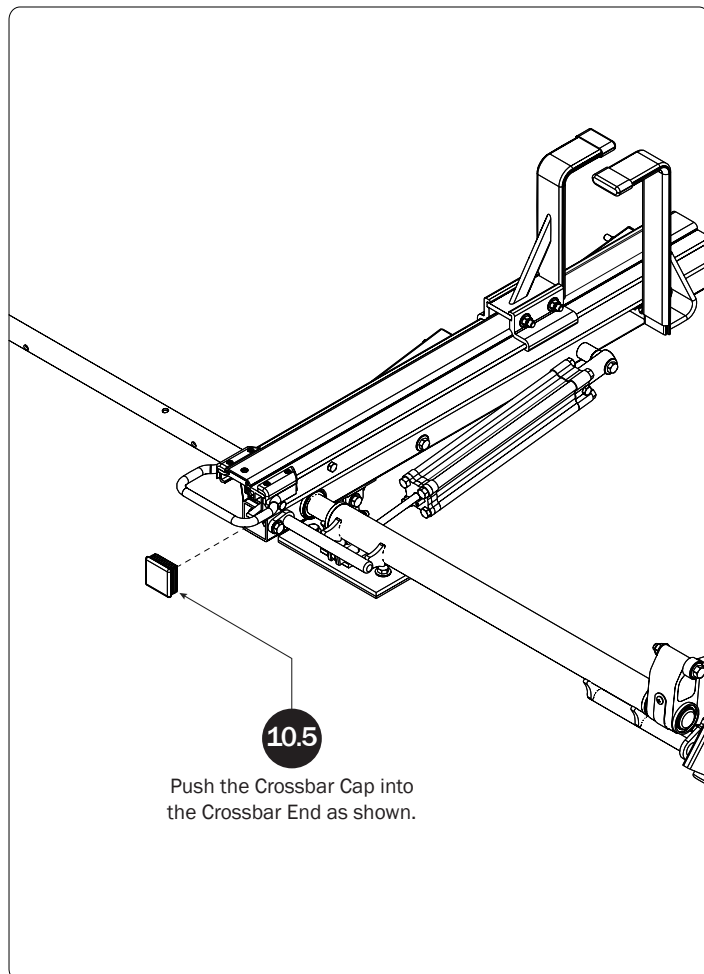


## LEFT ROTATION ASSEMBLY SEQUENCE

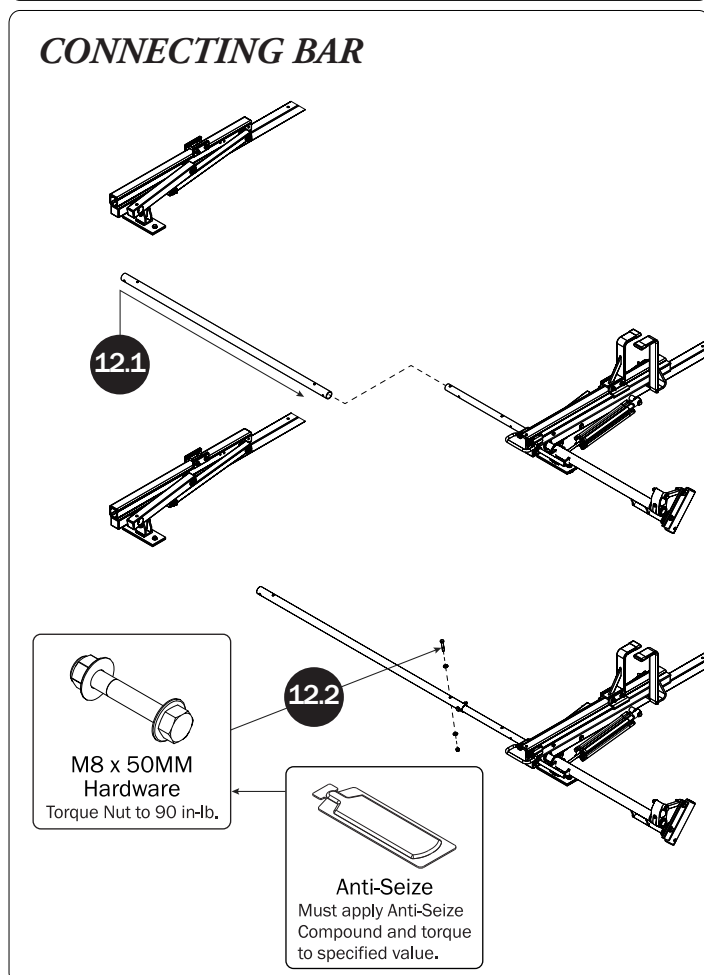


## REAR DRIVE SHAFT

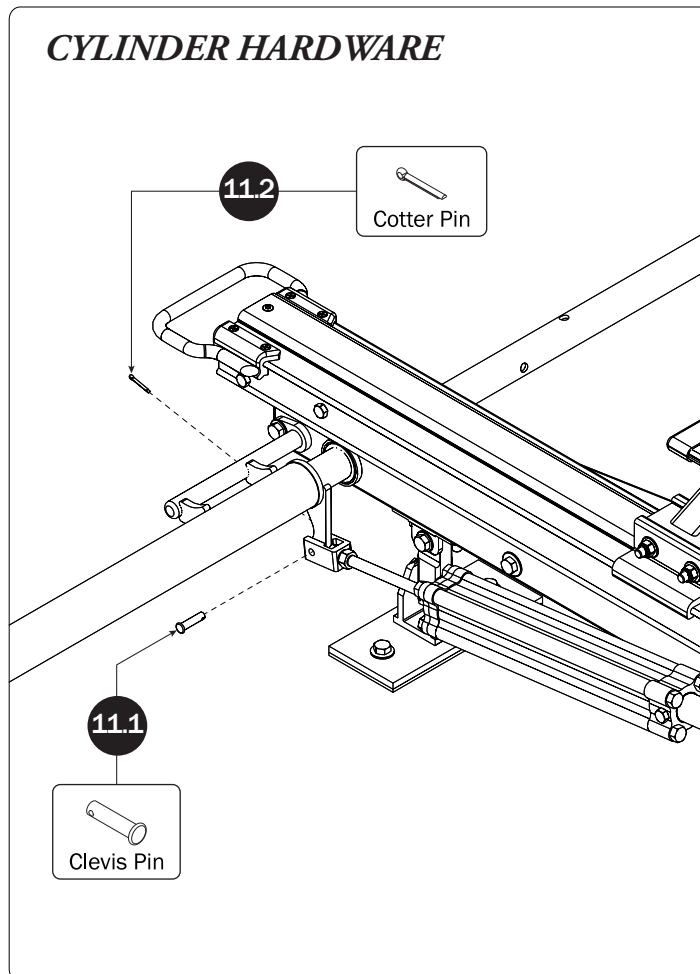




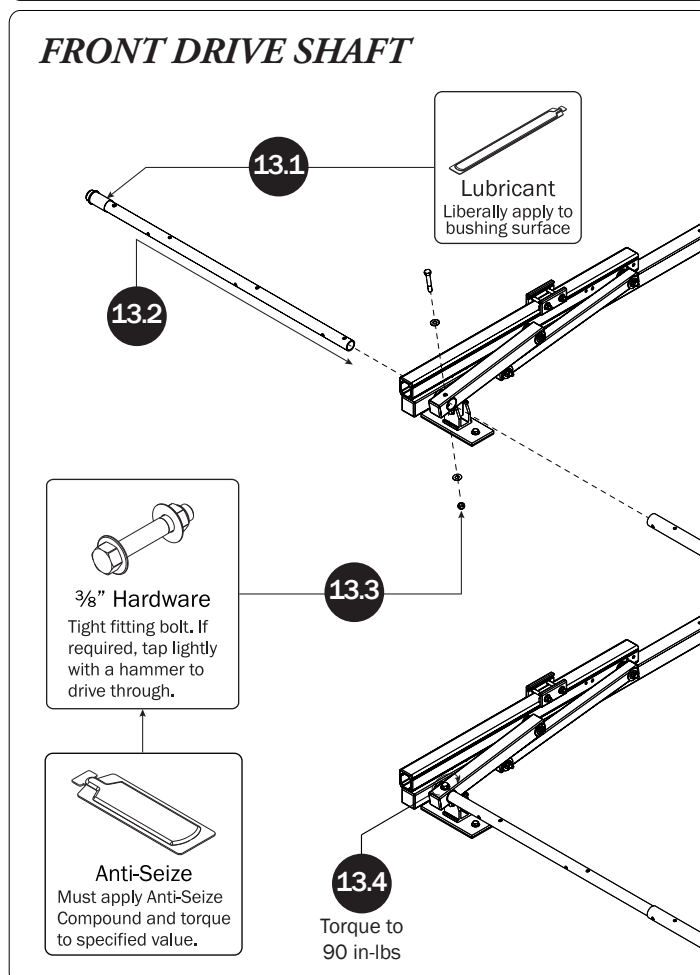
### CONNECTING BAR



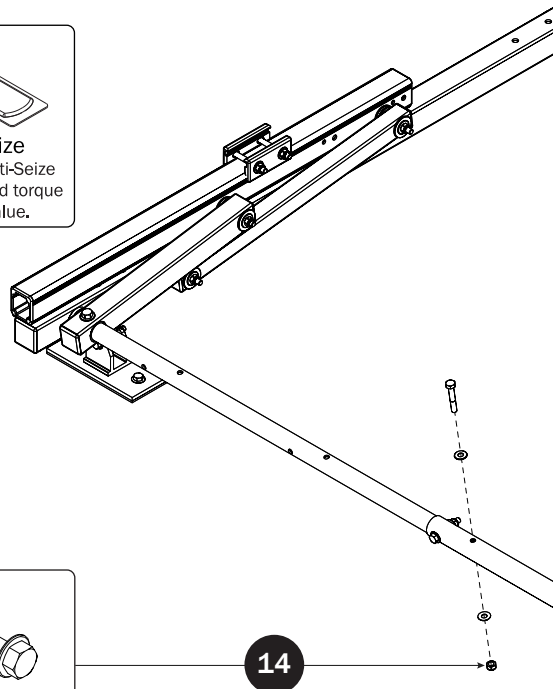
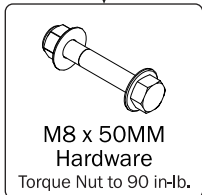
### CYLINDER HARDWARE



### FRONT DRIVE SHAFT

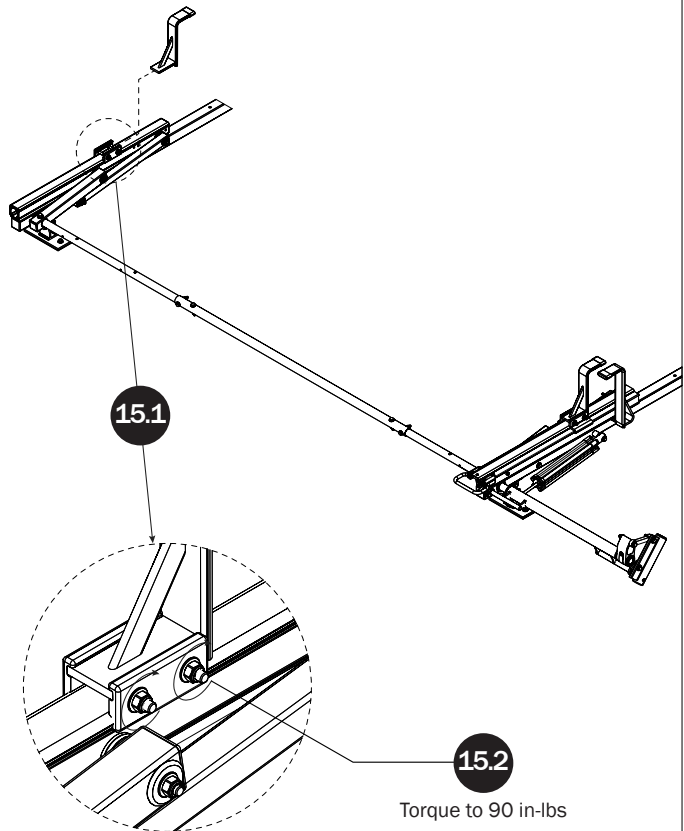


## CONNECTING BAR FASTENERS

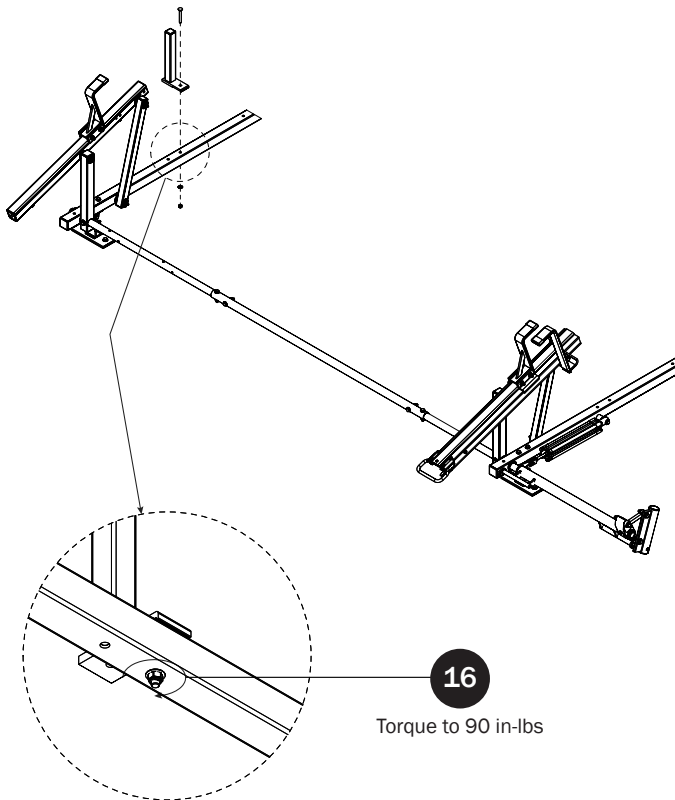


## Z POST

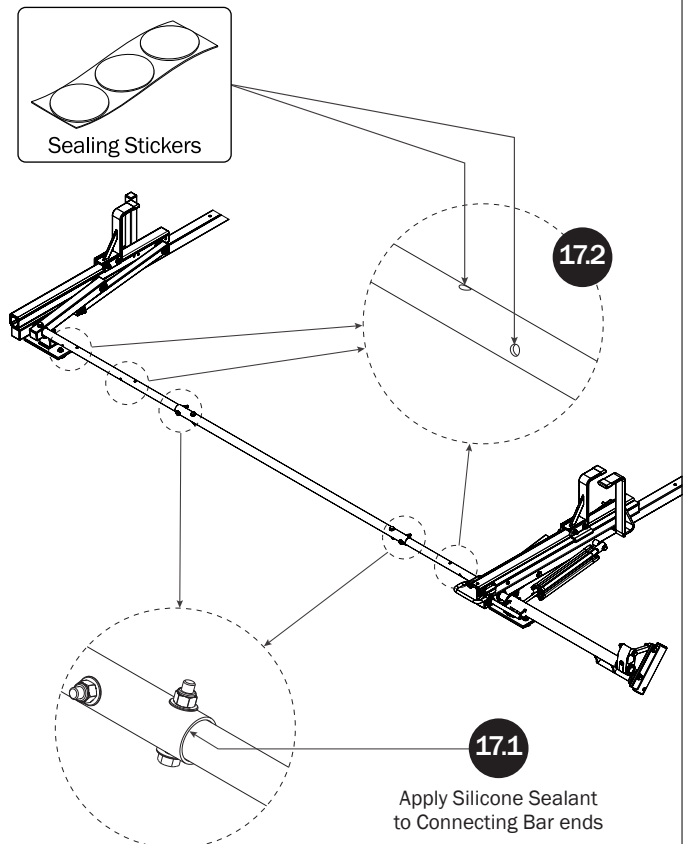
SEE QUICK START GUIDE FOR ADJUSTMENTS

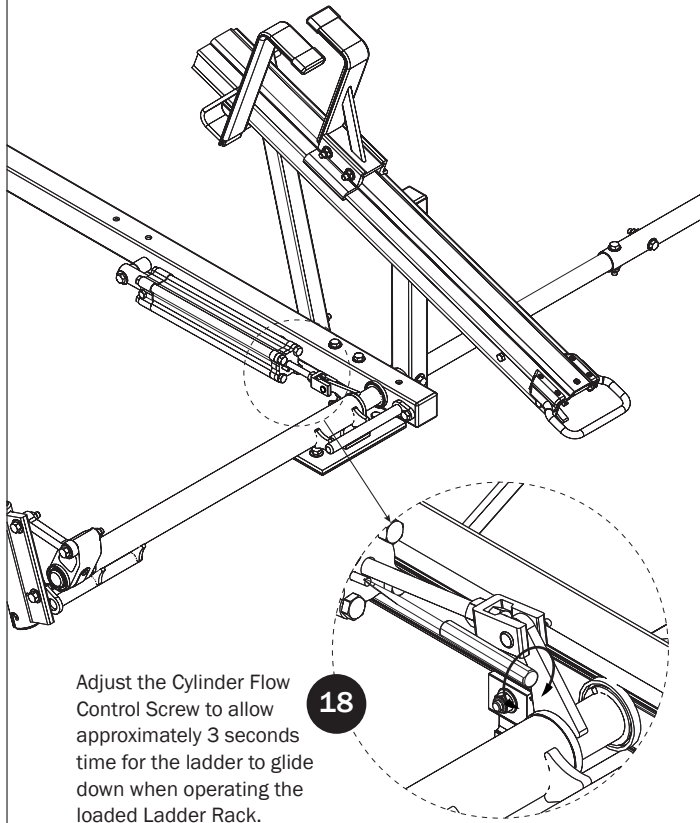


## L POST



## DRIVE SHAFT SEALING



*CYLINDER ADJUSTMENT*

USAM-HRR269EUM396-US01 Rev-B 0118