

PBB-6000

Pickup Rack, Universal

Dimensional Specifications on Page 2

Configuration as shown:

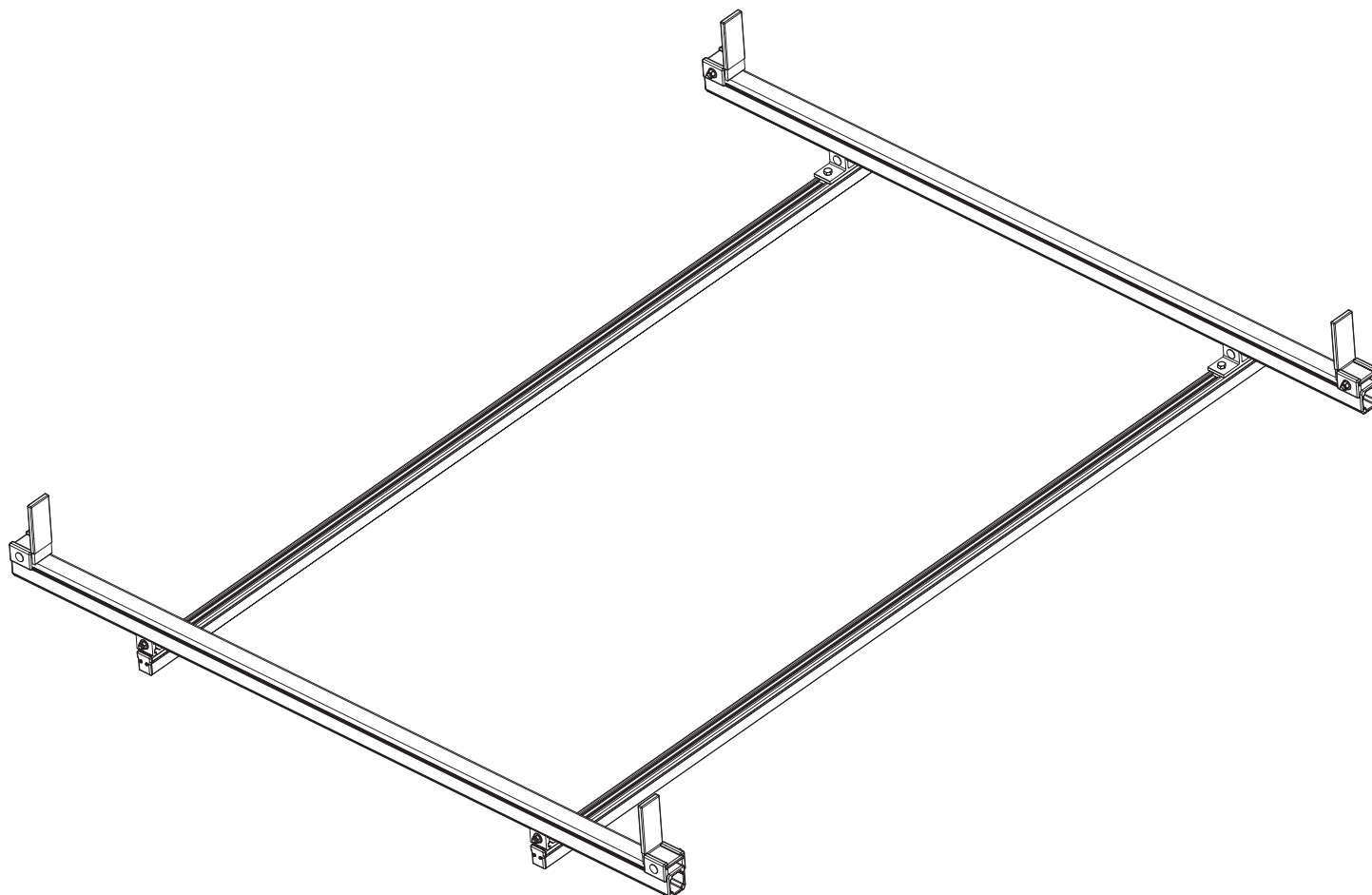
Base Left/Base Right
Two Crossbars, US Gen4
Finish: White Powder Coat
Rack Weight (empty): 25 lbs

Load specifications as shown:

Maximum Ladder Weight LH..... 100 lbs
Maximum Ladder Length LH..... 24 ft
Maximum Ladder Section LH..... 12 ft
Maximum Ladder Weight RH..... 100 lbs
Maximum Ladder Length RH..... 24 ft
Maximum Ladder Section RH..... 12 ft

**Note: Mounting Hardware purchased separately. For more information, please contact Sales & Support.*

**Mounting Hardware ordered separately*



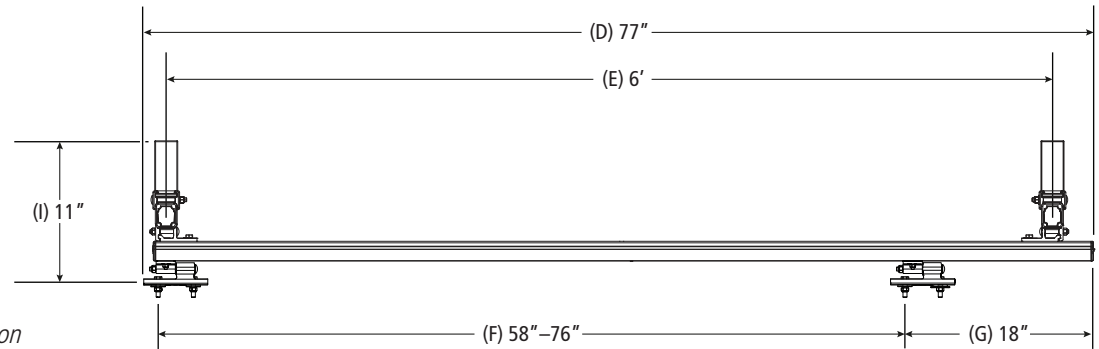
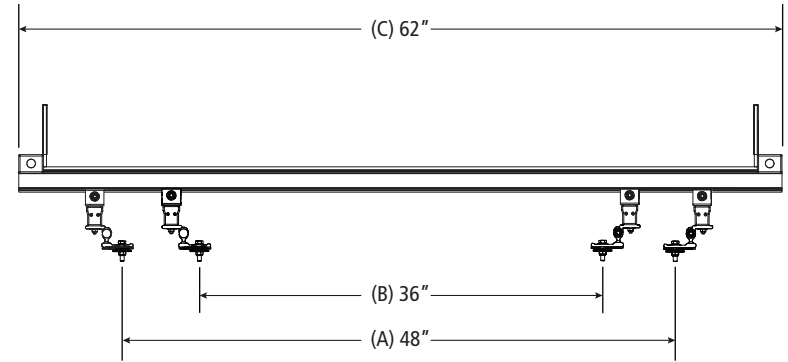
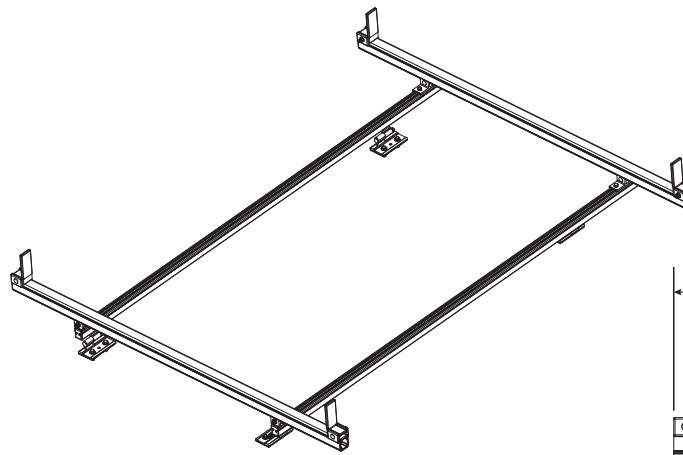
PBB-6000

Pickup Rack, Universal

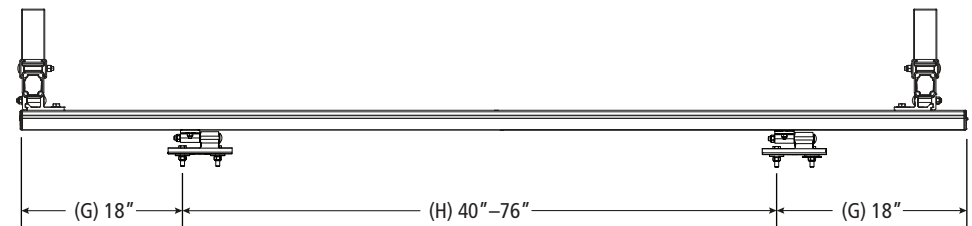
Shown with MPK-0007 for illustrative purposes only

Approximate dimensions as shown:

A: Maximum Mount Spacing L/R.....	36"
B: Minimum Mount Spacing	48"
C: Rack Width	62"
D: Rack Length.....	77"
E: Crossbar Spacing.....	6'
F: Mount Spacing F/R (Typ).....	58"–76"
G: Maximum Mount Offset	18"
H: Mount Spacing F/R (Alt)	40"–76"
I Rack Height	11"



Typical Installation



Alternate Installation

**Note: Mounting Hardware purchased separately. For more information, please contact Sales & Support.*

Assembly Manual also available:

PBB-6000

USOV-PBB6000-US01 Rev-A 0118

**Mounting Hardware ordered separately*