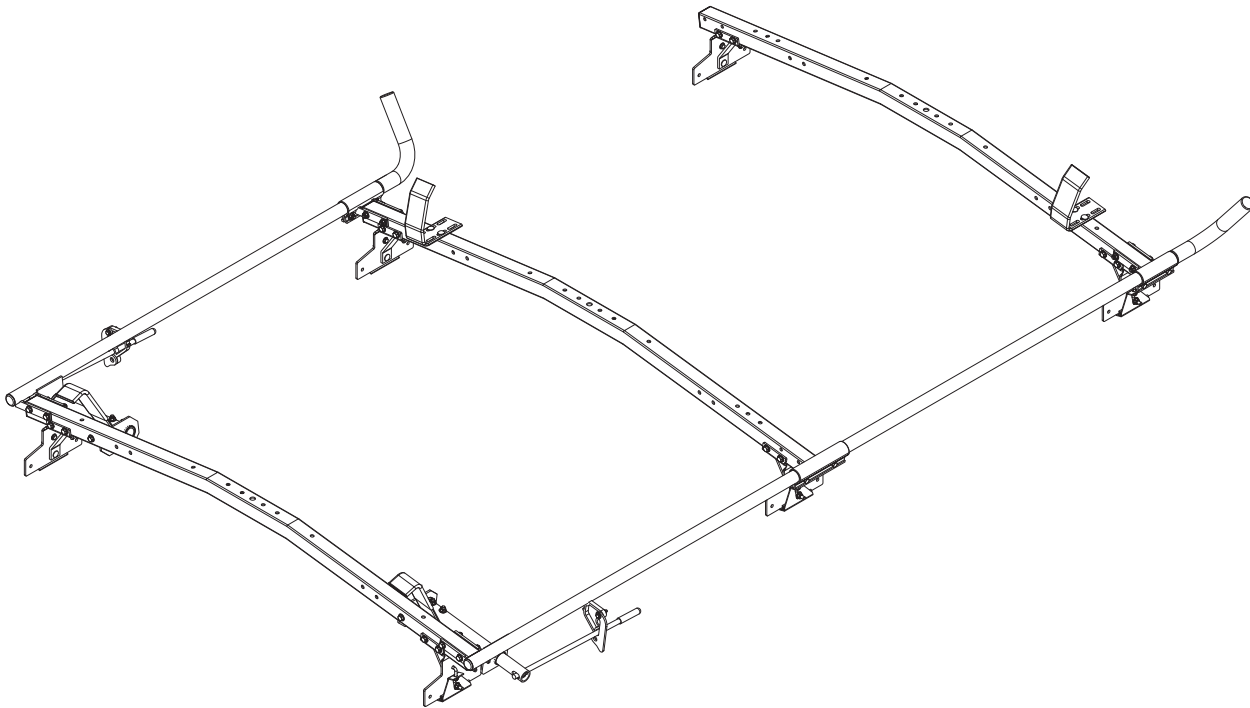
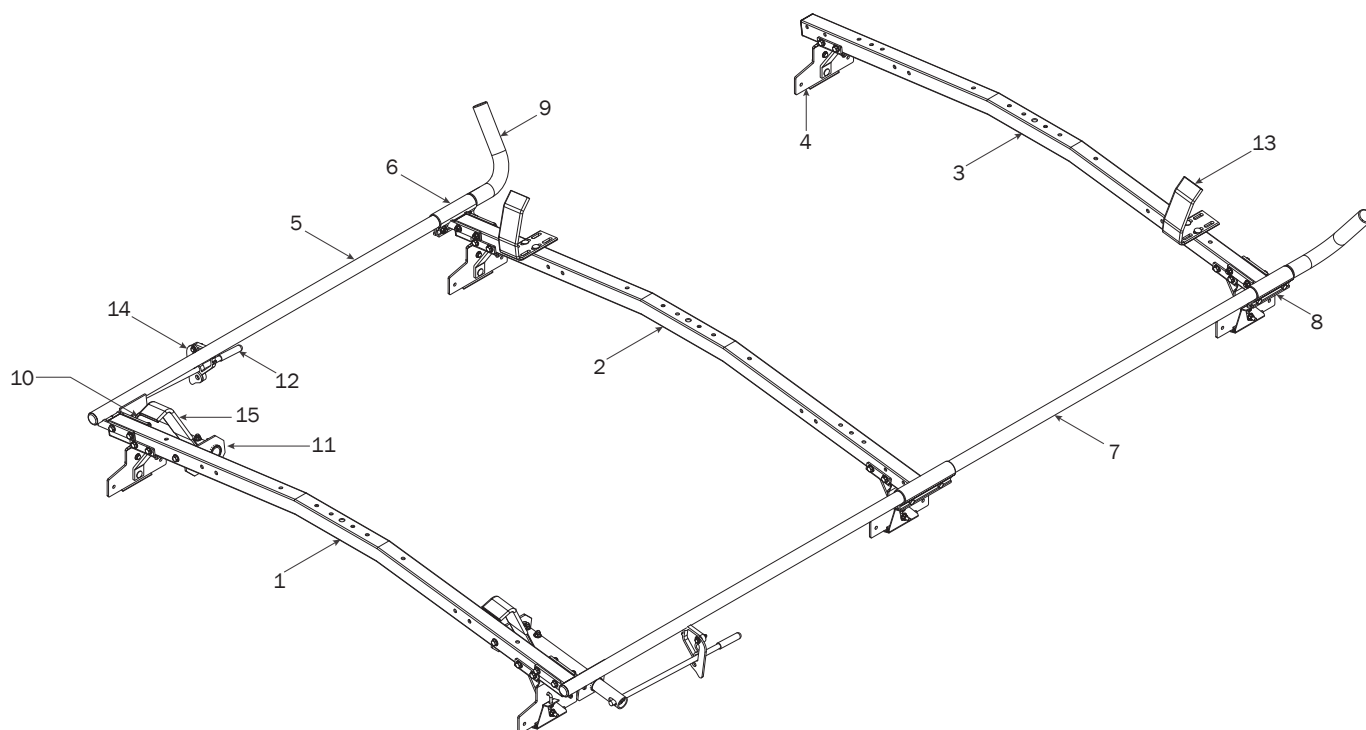


# PRIME DESIGN™

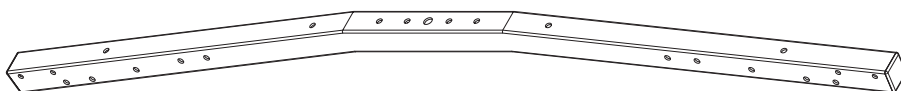
A Safe Fleet Brand



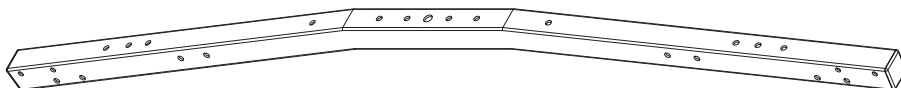
VCC 326



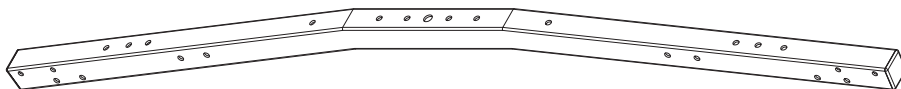
1—Rear Crossbar Assembly ..... (Qty 1)



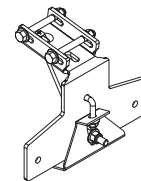
2—Mid Crossbar Assembly ..... (Qty 1)



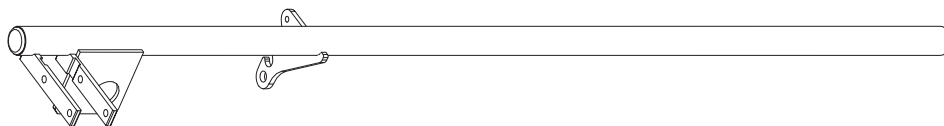
3—Front Crossbar Assembly ..... (Qty 1)



4—Mounting Bracket Assembly ..... (Qty 4)  
Horizontal, Low Mounting, 4.50", GM



5—Clamp Down Tube Assembly ..... (Qty 2)  
Rear, Left Hand, 50.00"



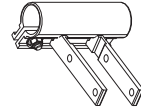
6—Clamp Down Tube Splice ..... (Qty 2)  
7.00"



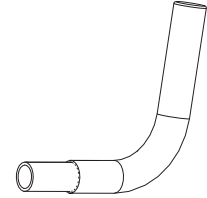
7—Clamp Down Tube .....(Qty 1)  
Front, 48.00"



8—Clamp Down Tube Splice .....(Qty 2)  
Welded, 5.00"



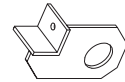
9—Clamp Down Horn .....(Qty 2)  
Left Hand, with Cap, 15.00"



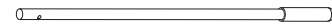
10—Clamp Down Handle Tube .....(Qty 2)  
14.50"



11—Clamp Down Handle Tube Bracket .....(Qty 2)  
Rear, Left Hand



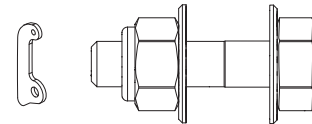
12—Clamp Down Handle .....(Qty 2)  
With Black Grip, 18.00"



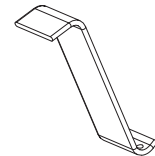
13—Clamp Down Hook .....(Qty 2)  
Front, Slotted



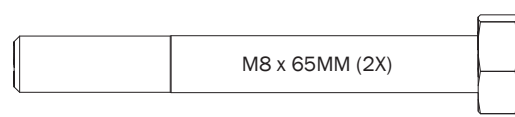
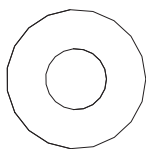
14—Handle Latch Lock Plate..... (Qty 2)  
With Hardware, Gen1



15—Clamp Down Hook..... (Qty 2)  
Rear



HKT-8112-Clamp Down Hardware Kit



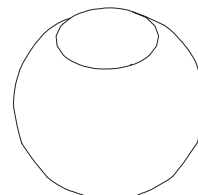
M8 Locknut (18x) 5/16" Flat Washer (32X)



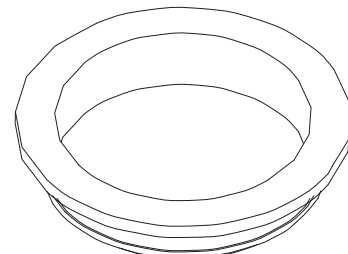
Ball Set Screw (2X)



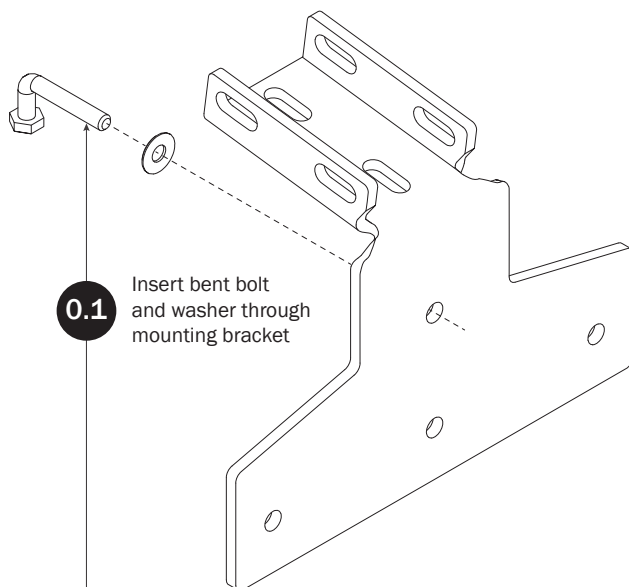
Anti-Seize (2X)



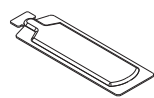
Clamp Down Ball (2X)



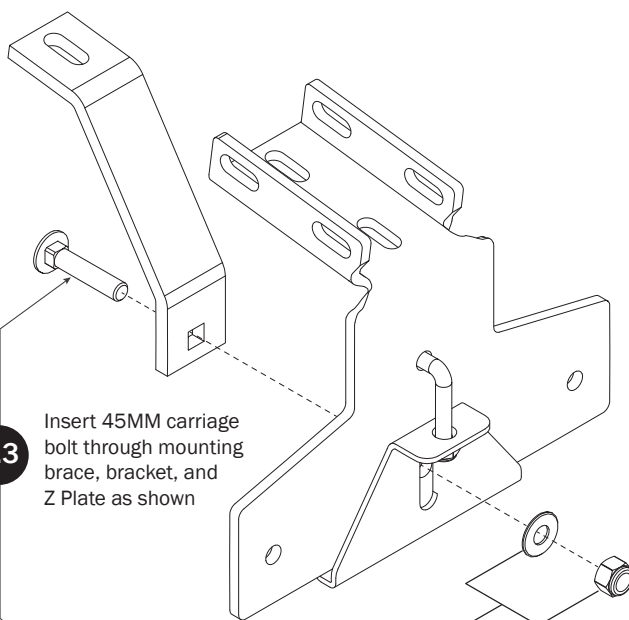
Clamp Down Handle Sleeve (4X)

**MOUNTING BRACKETS—HORIZONTAL  
BRACKET PRE-ASSEMBLY**

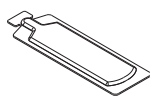
**0.1** Insert bent bolt and washer through mounting bracket



**Anti-Seize**  
Must apply Anti-Seize Compound and torque to specified value.



**0.3** Insert 45MM carriage bolt through mounting brace, bracket, and Z Plate as shown



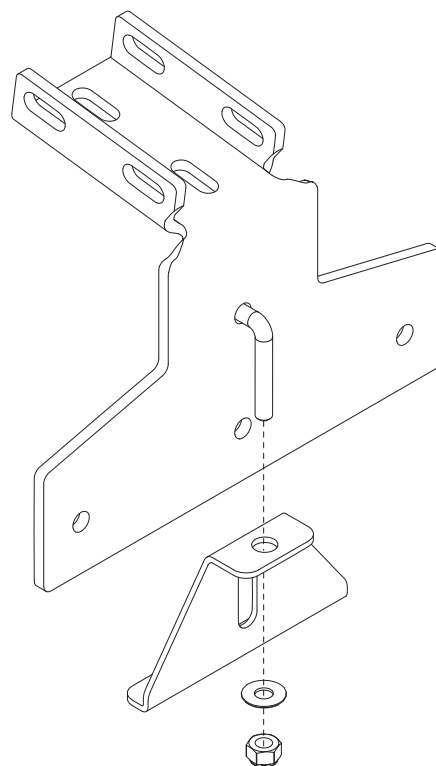
**Anti-Seize**  
Must apply Anti-Seize Compound and torque to specified value.

**0.4**

Secure mounting assembly with washer and nut. Do not tighten until installed on vehicle roof

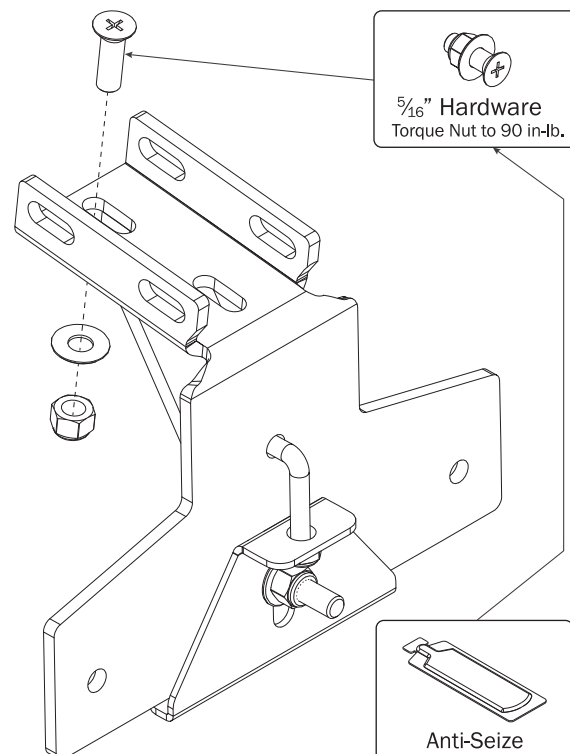
**0.2**

Assemble the Z Plate and secure with washer and nut. Do not tighten until installed on vehicle roof

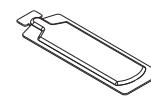


**0.5**

Repeat Steps 0.1–0.5 to assemble the remaining Horizontal Mounting Brackets

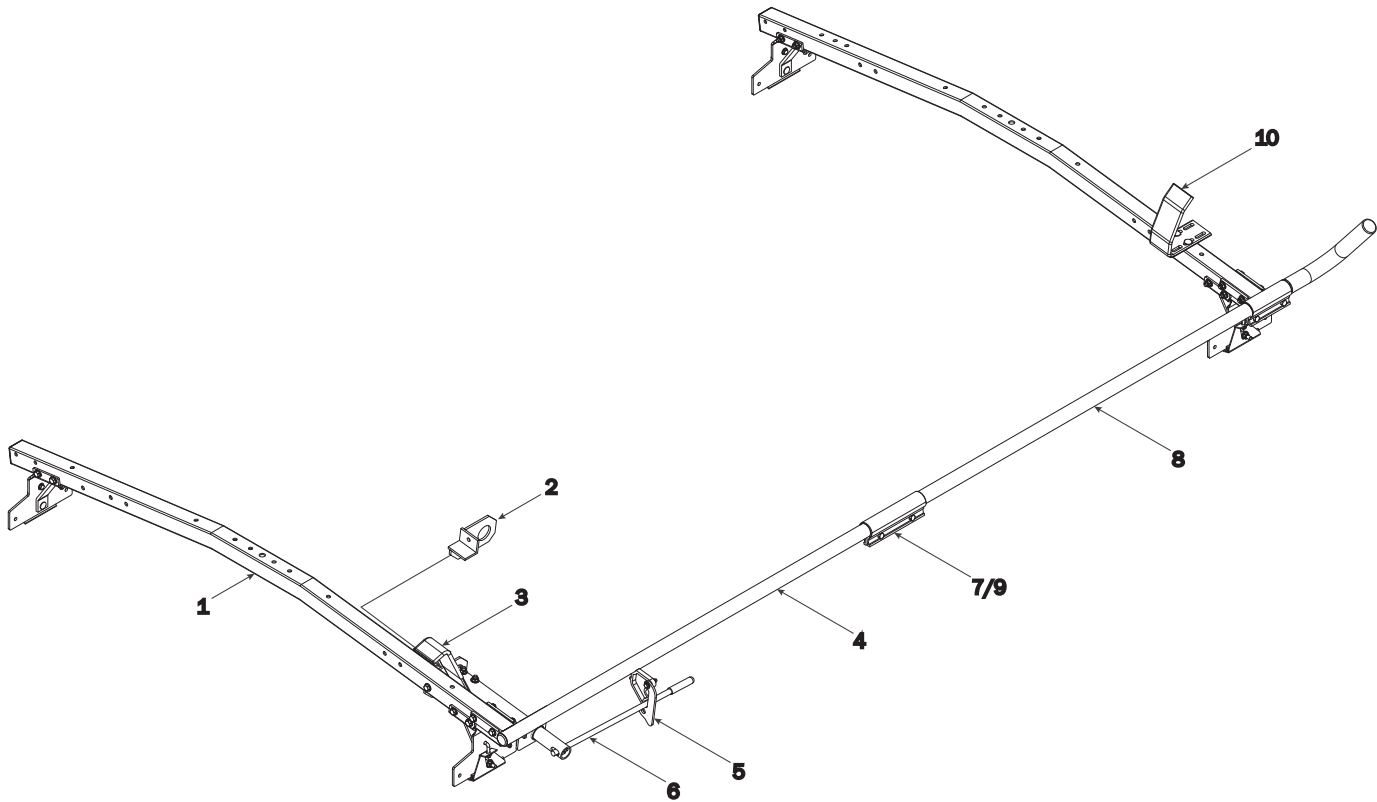


**5/16" Hardware**  
Torque Nut to 90 in-lb.



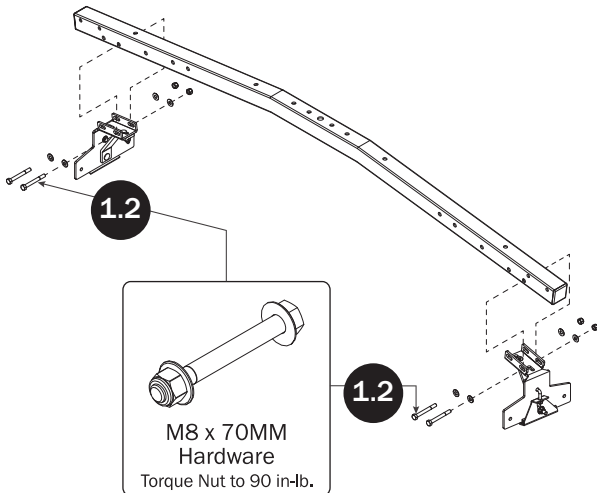
**Anti-Seize**  
Must apply Anti-Seize Compound and torque to specified value.

## RIGHT CLAMP DOWN ASSEMBLY SEQUENCE



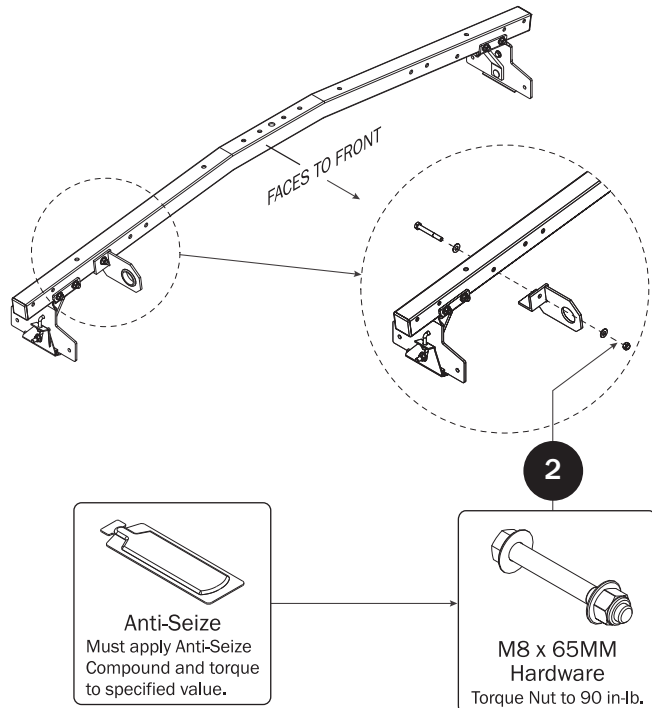
### CROSSBARS

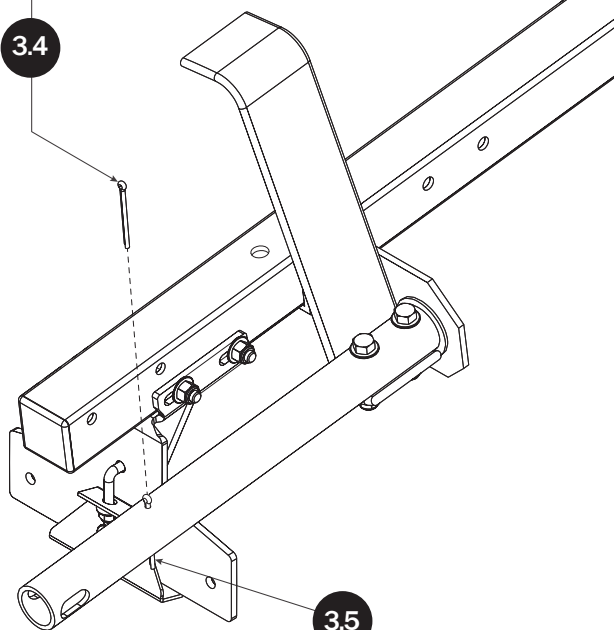
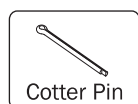
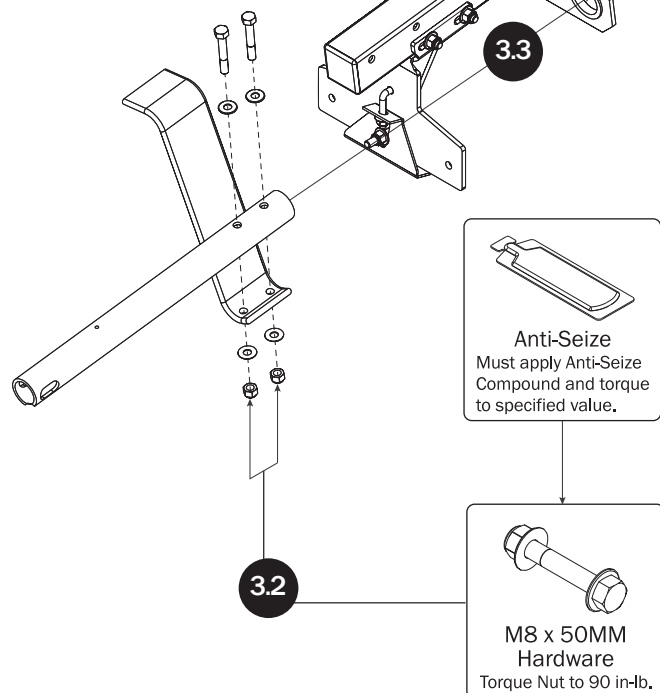
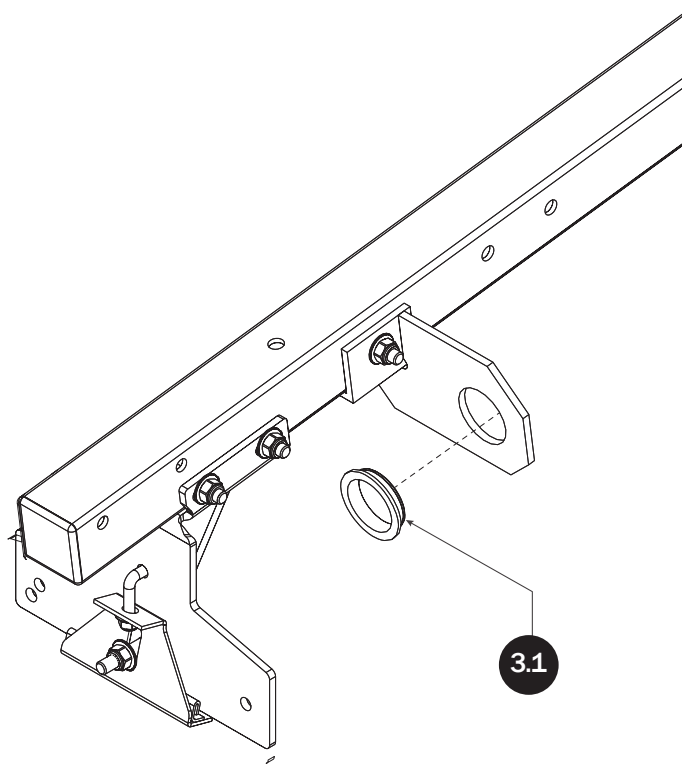
- 1.1** Apply Anti-Seize compound to Mounting Bracket bolts



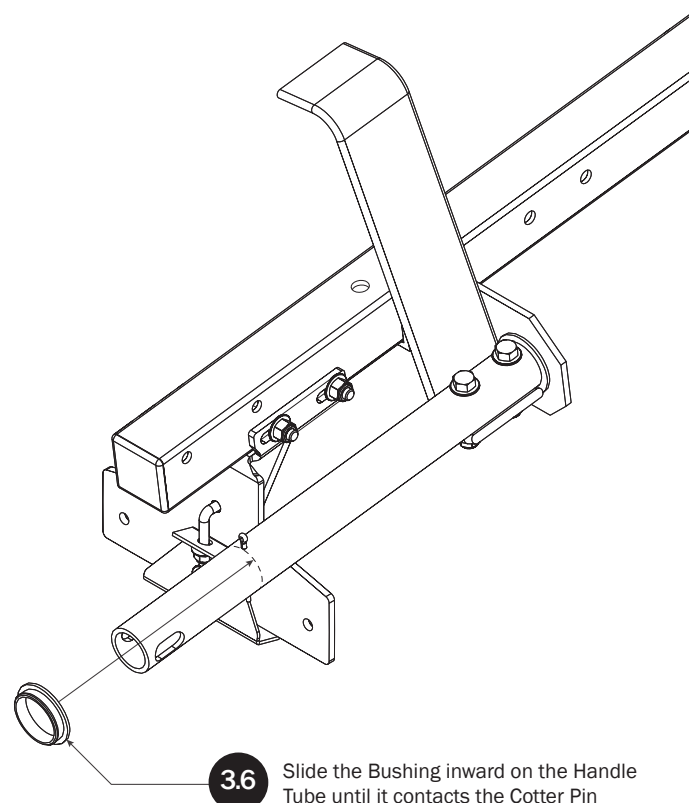
- 1.3** Repeat Step 1.2 to install the remaining Mounting Brackets onto the mid and front Crossbar

### CLAMP DOWN HANDLE TUBE BRACKET



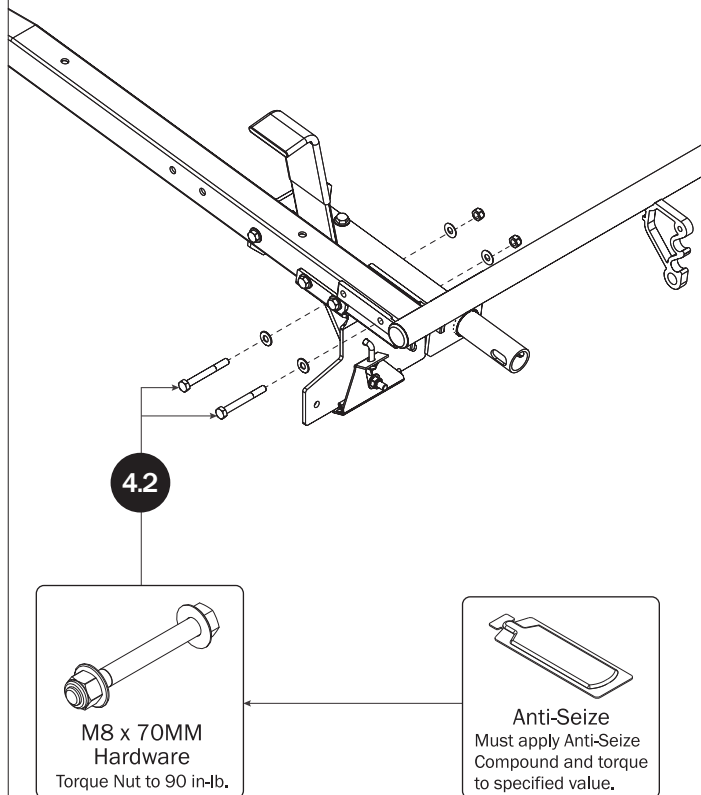
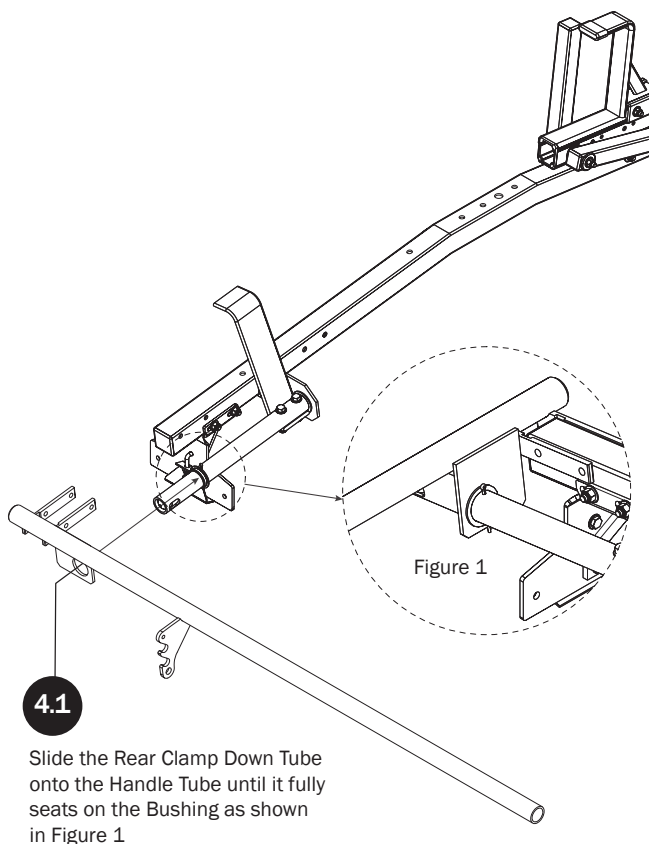
**CLAMP DOWN HANDLE TUBE**

Bend the Cotter Pin to secure it in the Handle Tube as shown

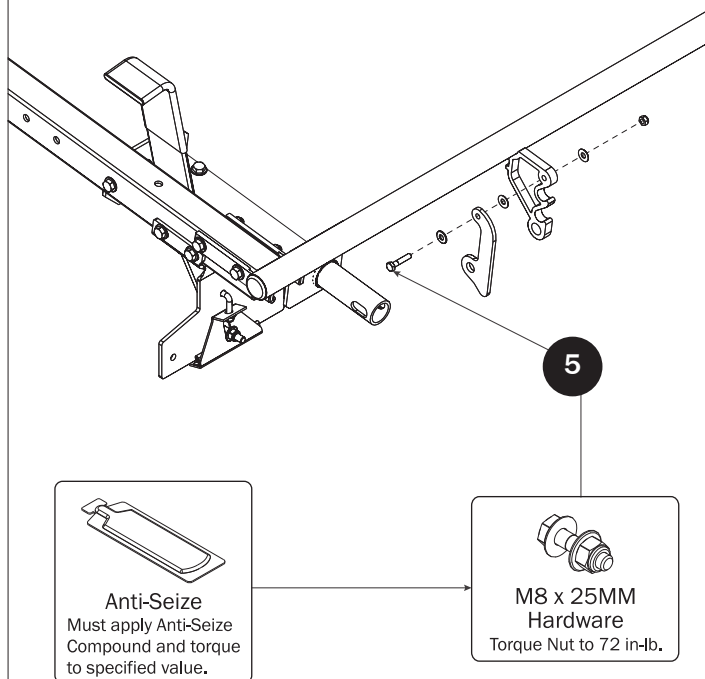


Slide the Bushing inward on the Handle Tube until it contacts the Cotter Pin

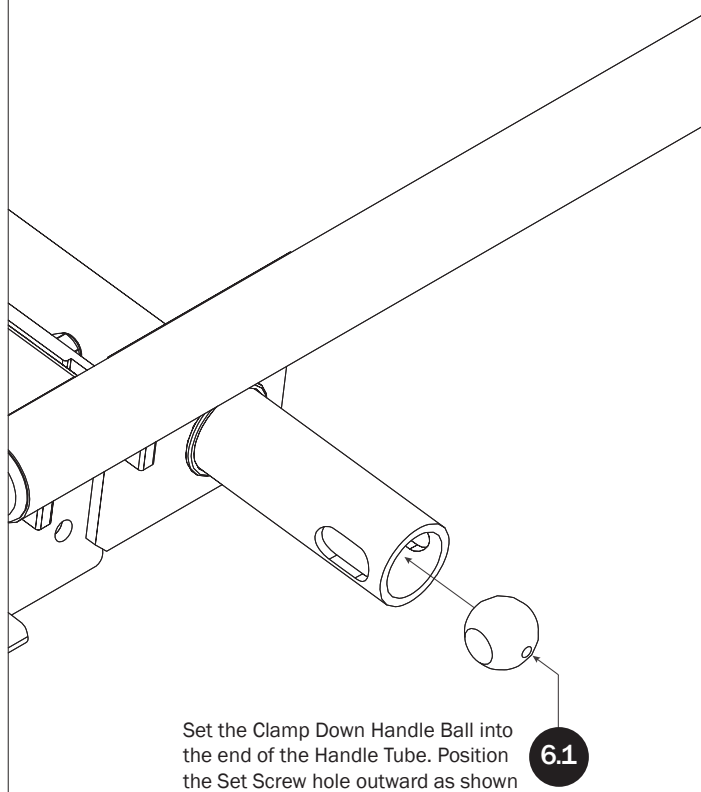
## REAR CLAMP DOWN TUBE

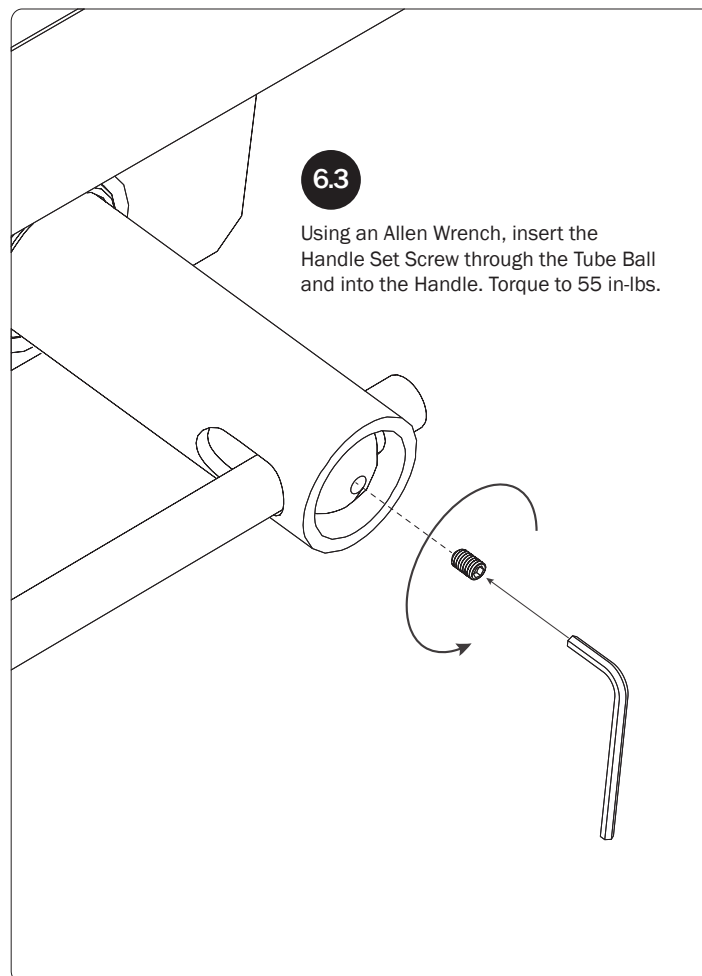
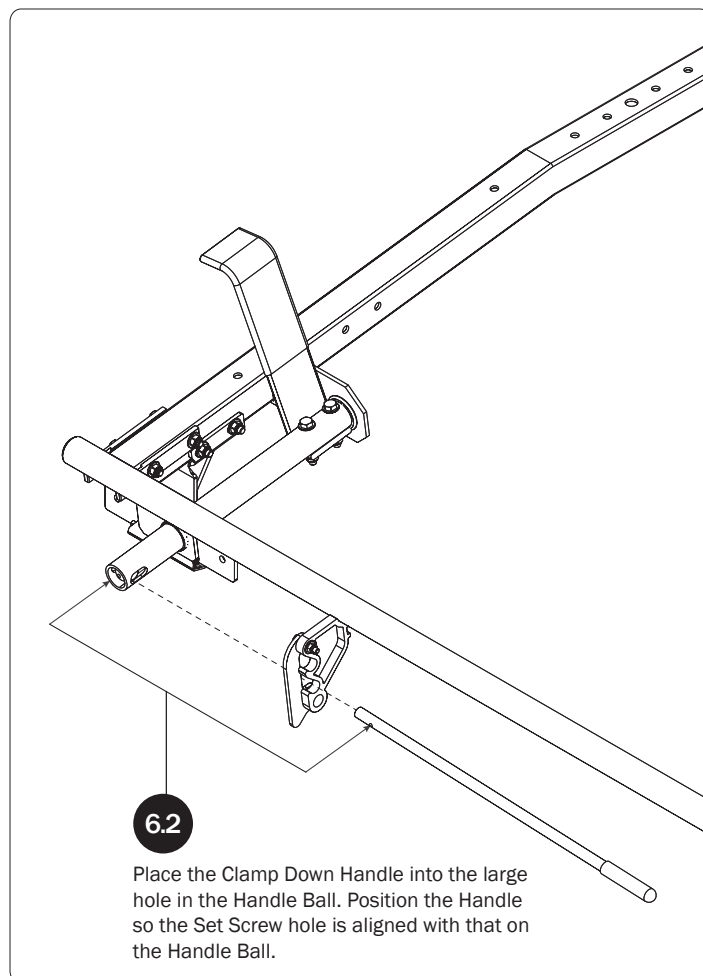


## HANDLE LATCH

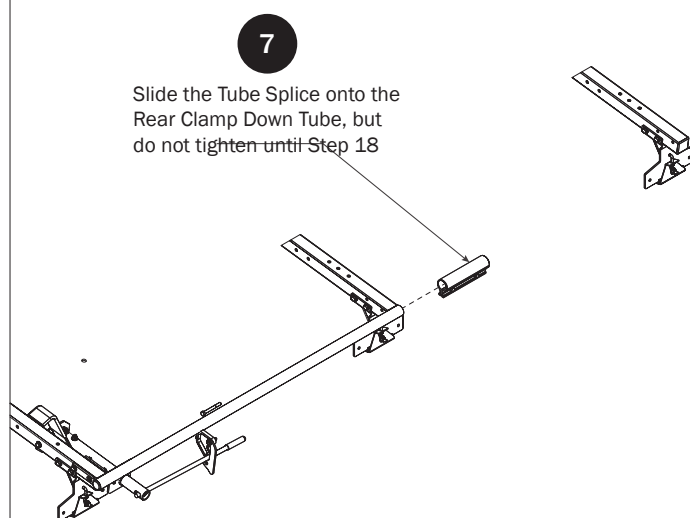


## CLAMP DOWN HANDLE

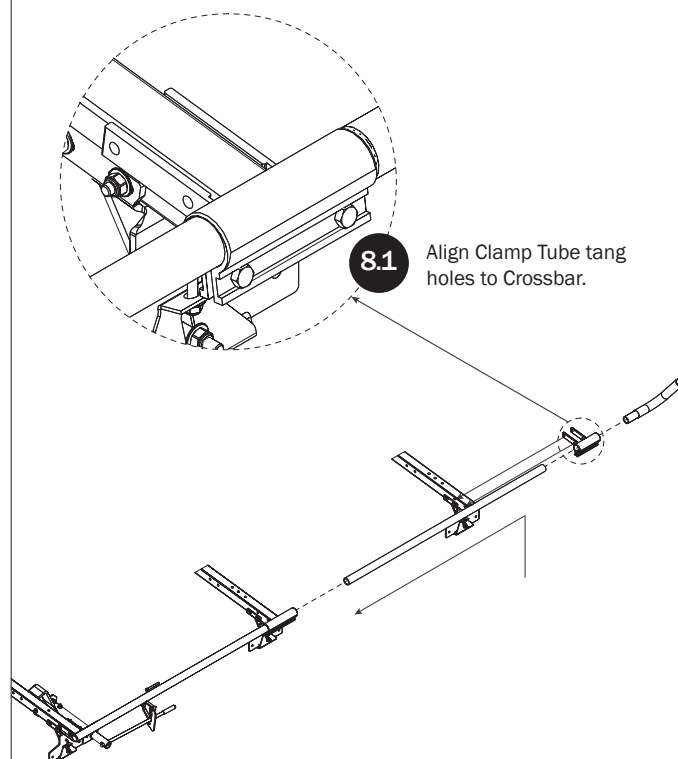




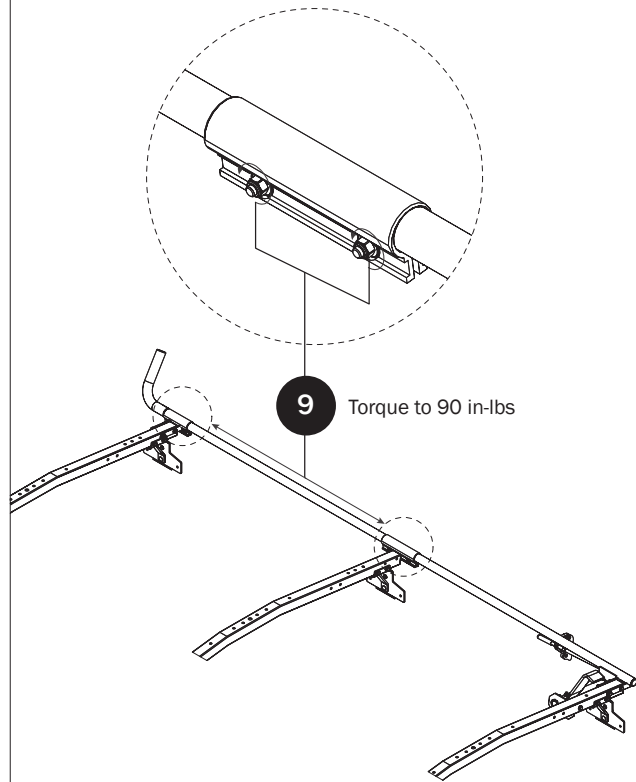
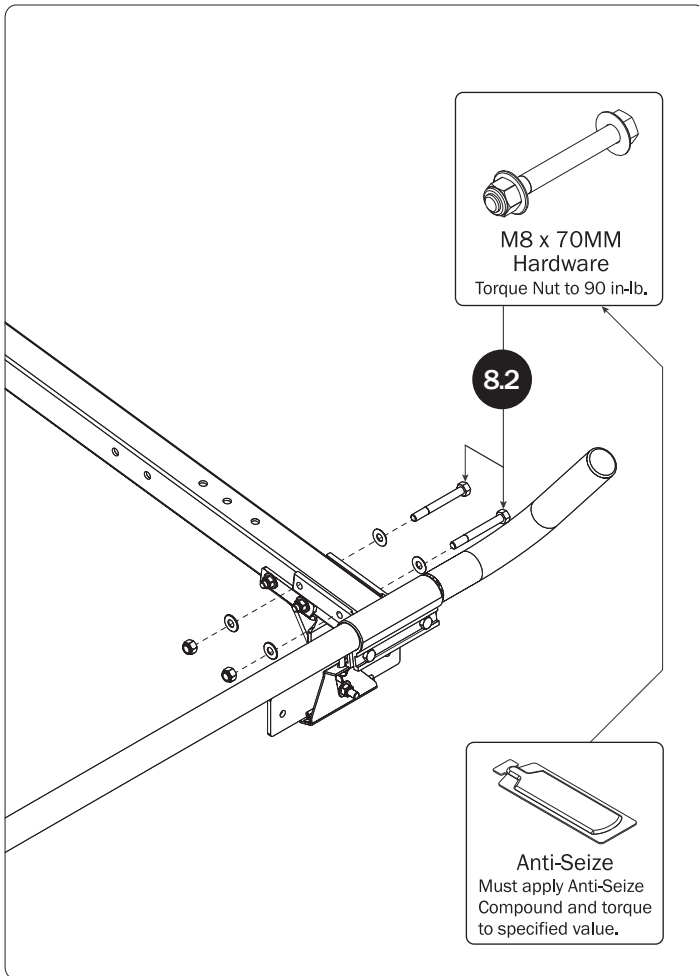
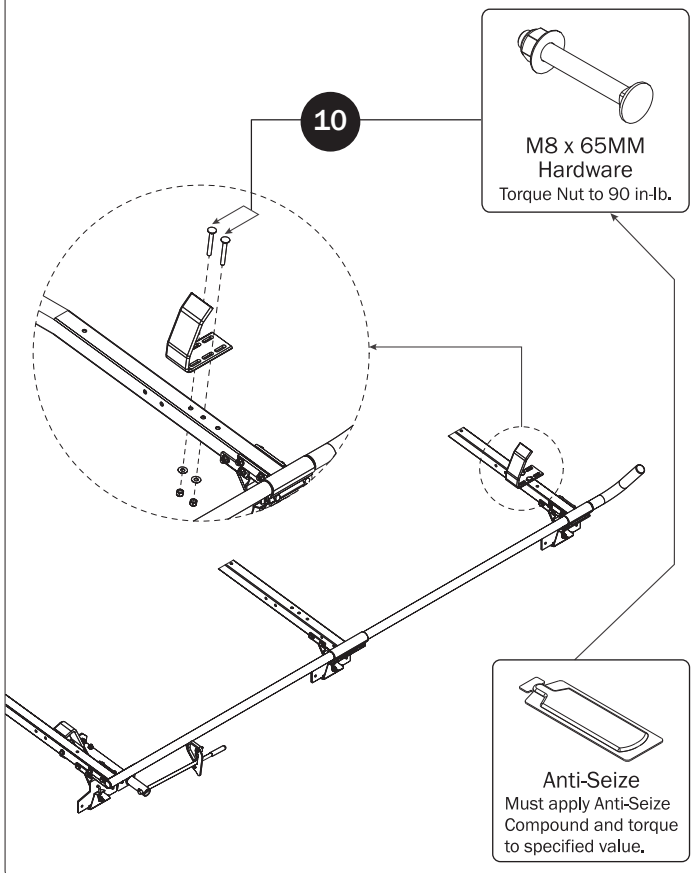
### CLAMP DOWN TUBE SPLICE

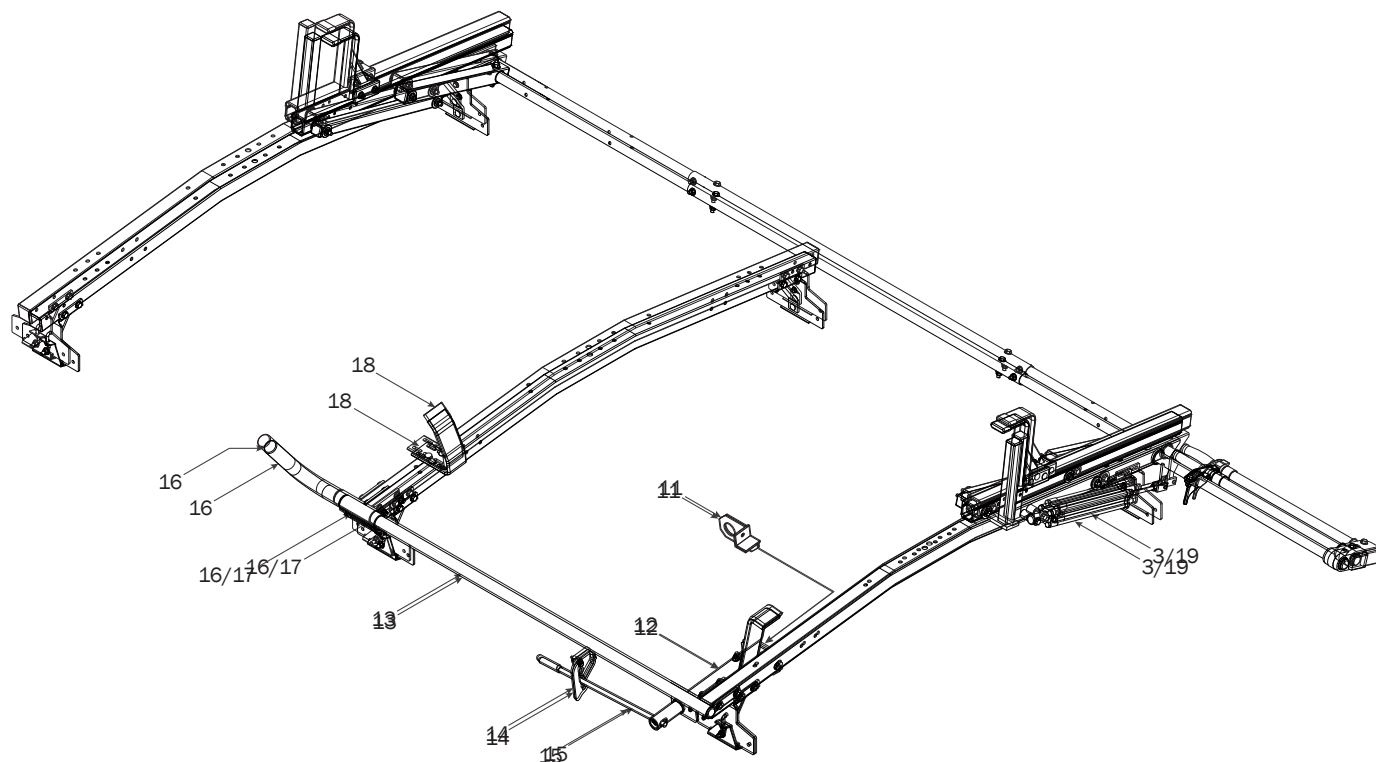
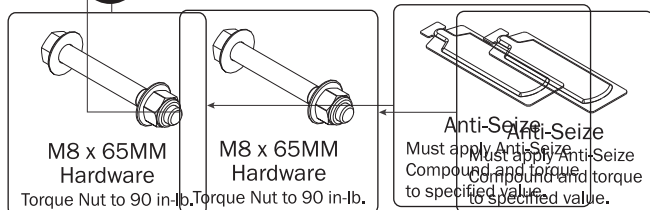
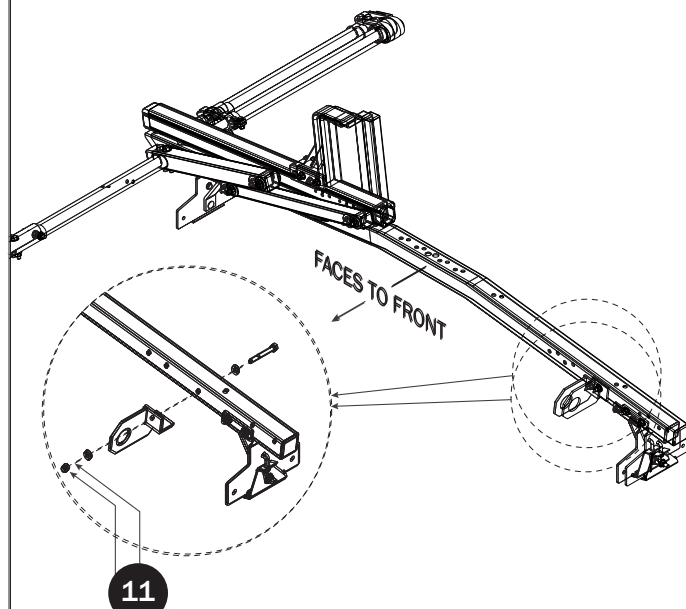
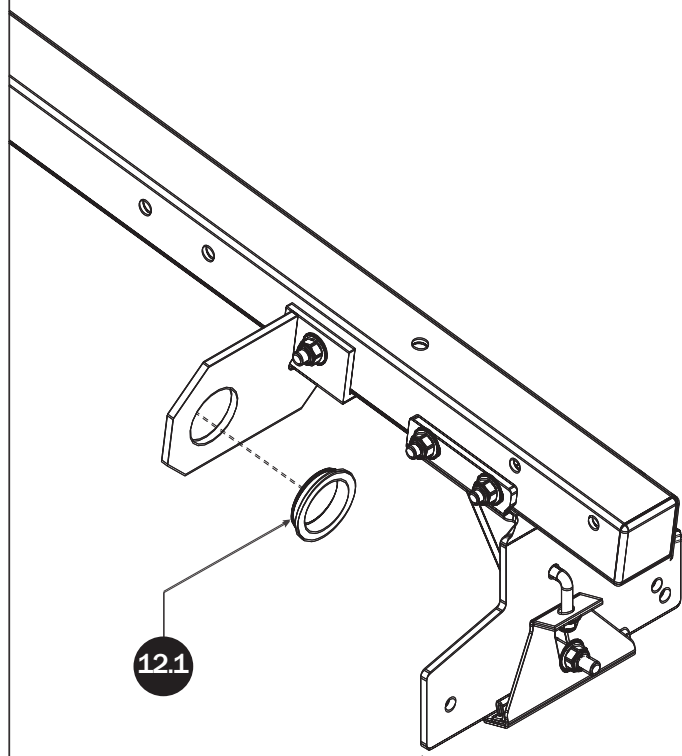


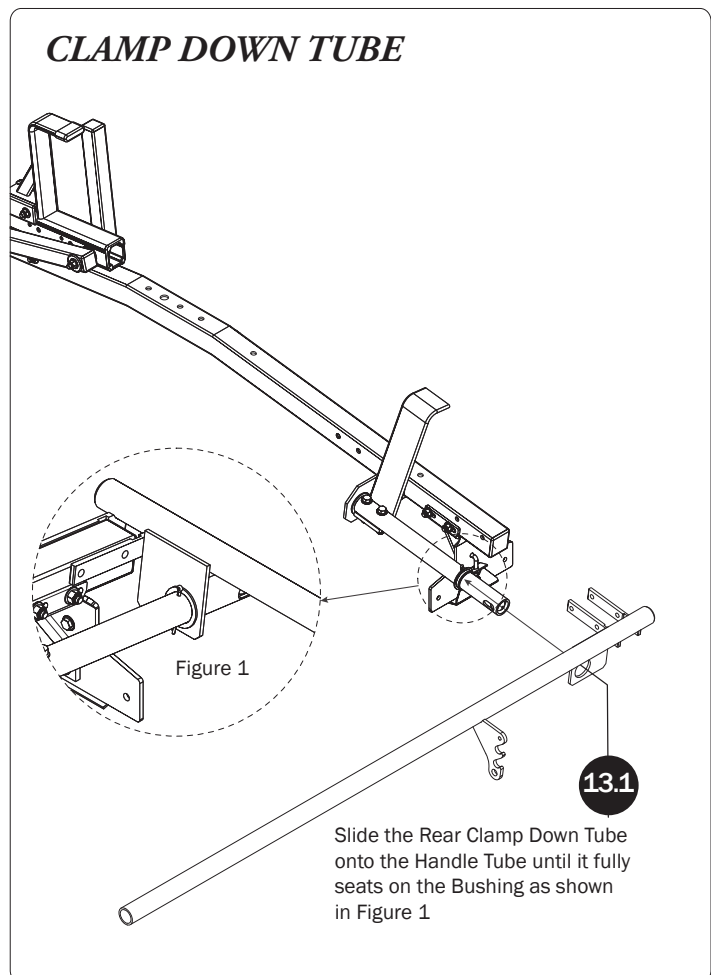
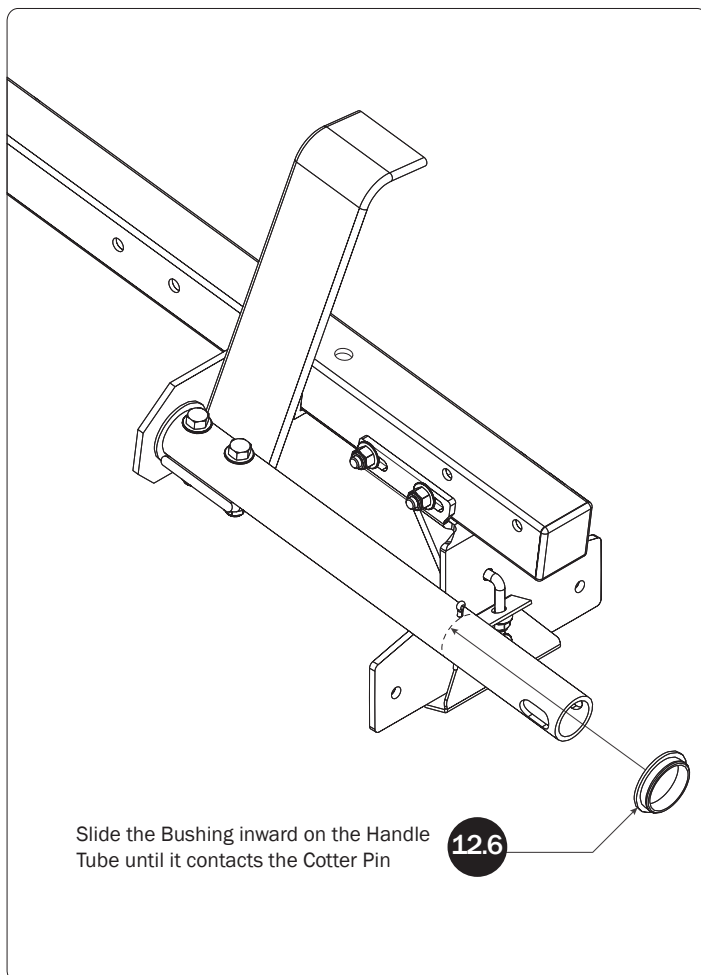
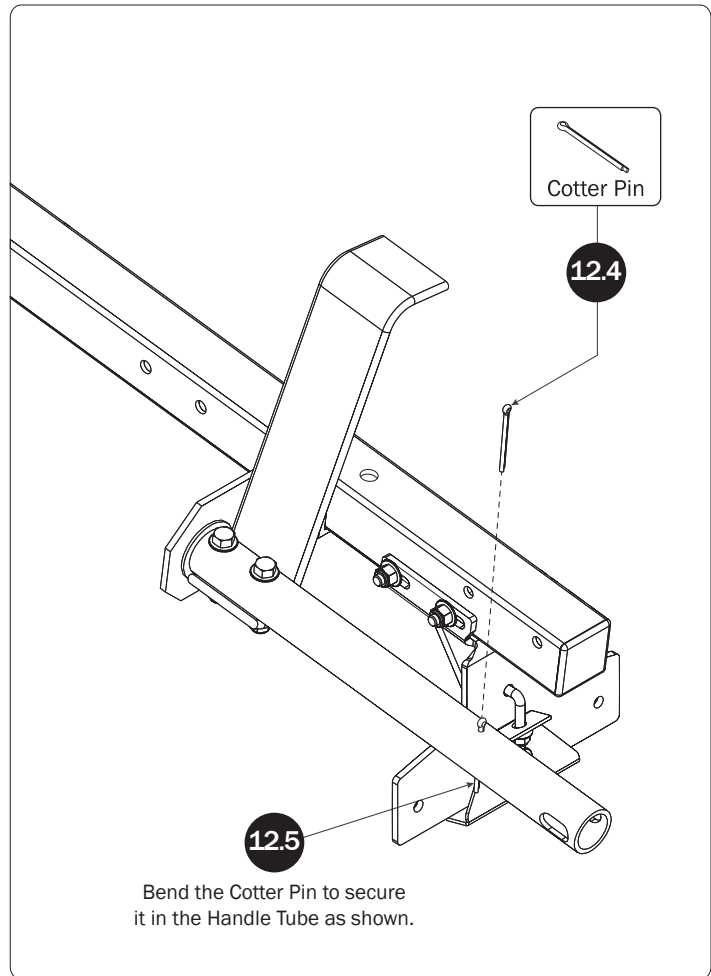
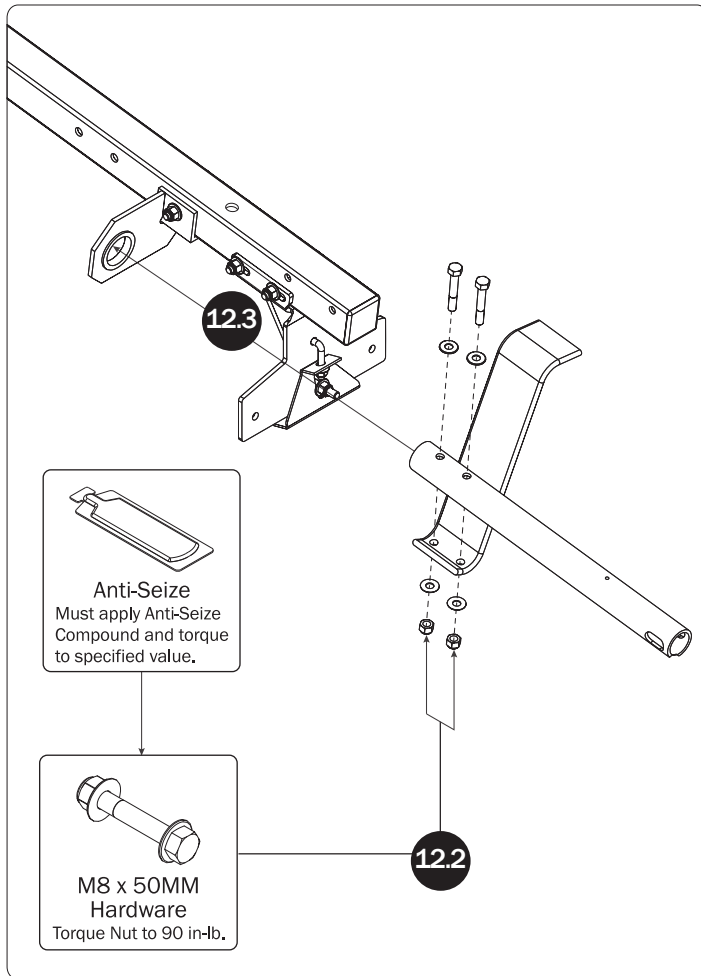
### FRONT CLAMP DOWN TUBE

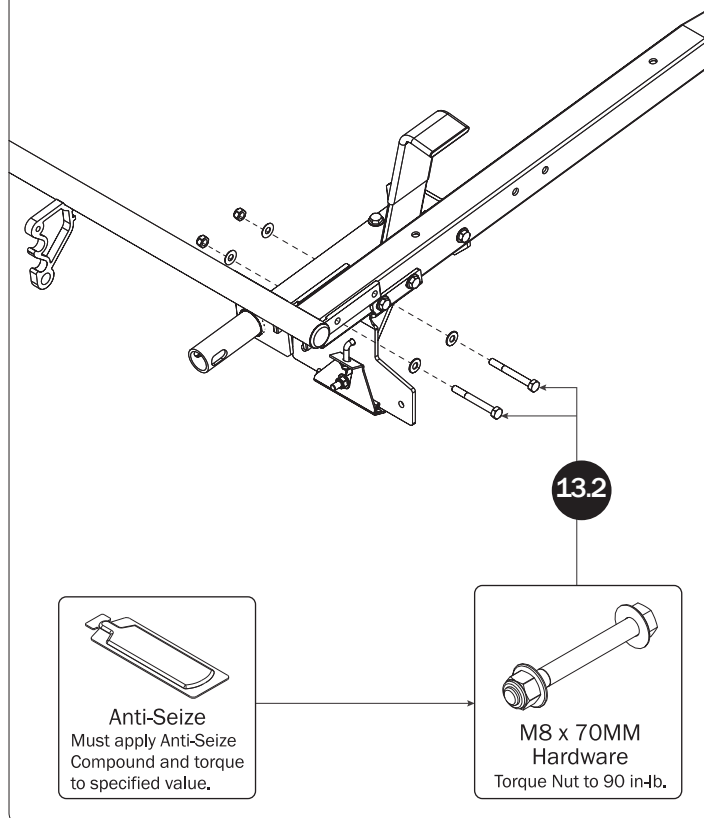
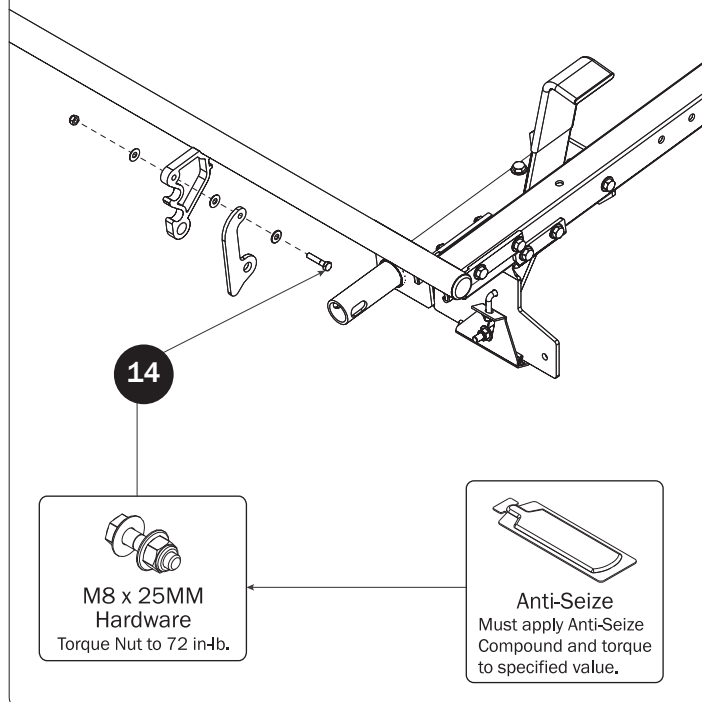
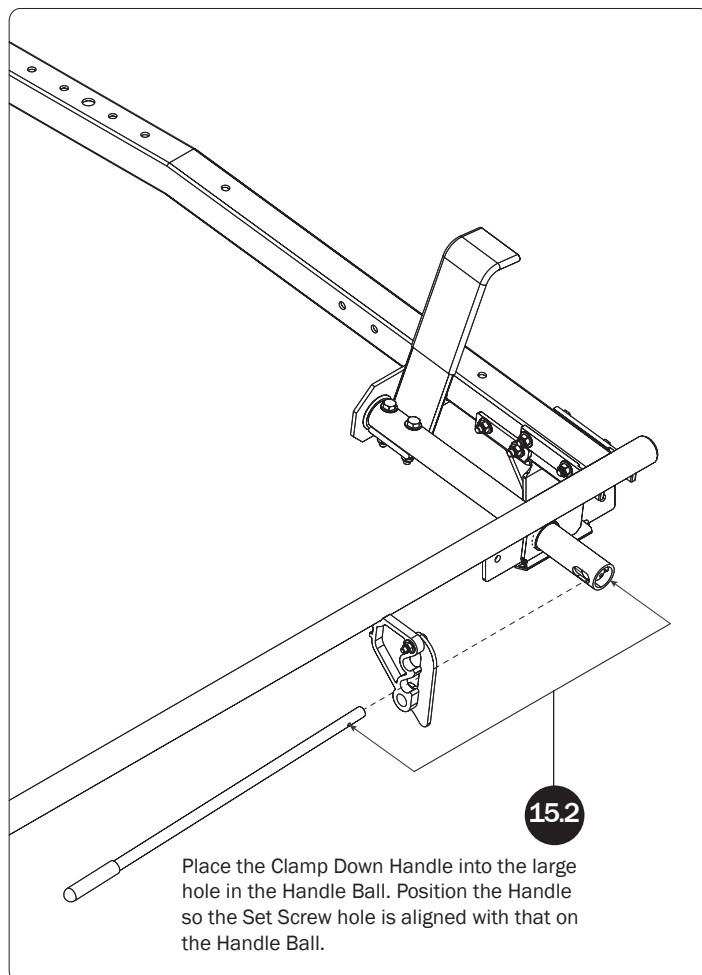
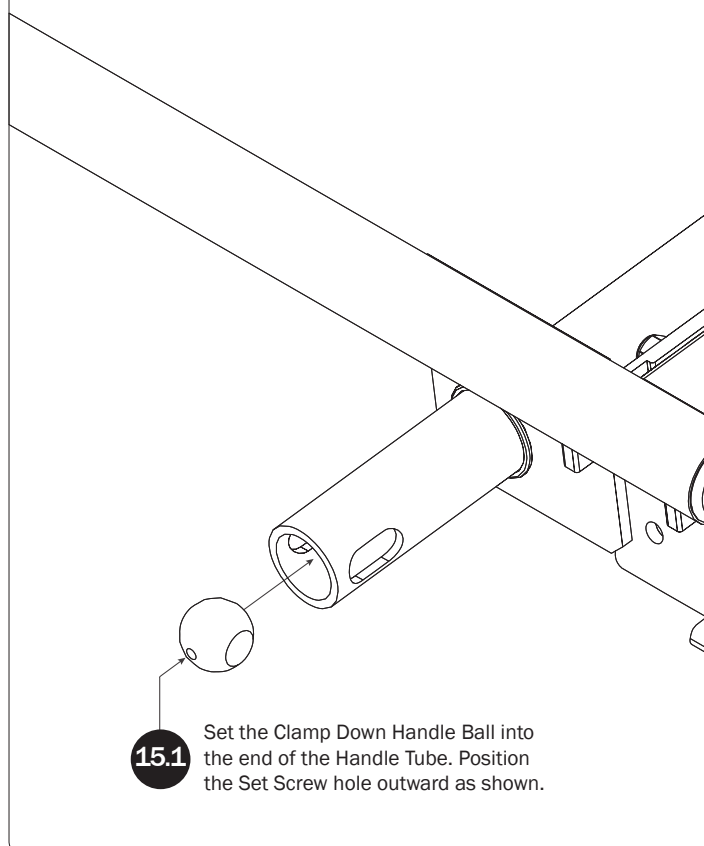




**CLAMP DOWN TUBE ADJUSTMENTS****FRONT LADDER HOOK**

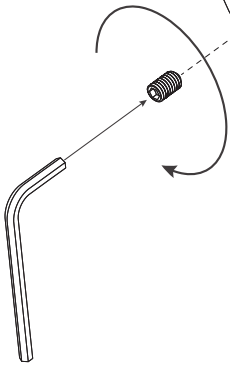
**LEFT CLAMP DOWN ASSEMBLY SEQUENCE****CLAMP DOWN HANDLE  
TUBE BRACKET****CLAMP DOWN HANDLE TUBE**



**HANDLE LATCH****CLAMP DOWN HANDLE**

15.3

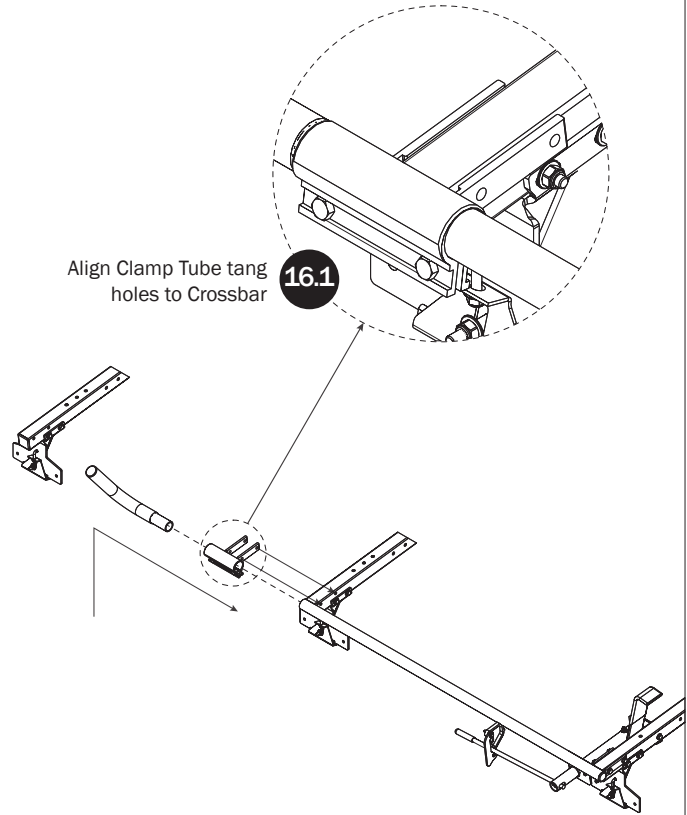
Using an Allen Wrench, insert the Handle Set Screw through the Tube Ball and into the Handle. Torque to 55 in-lbs.



## FRONT CLAMP DOWN TUBE

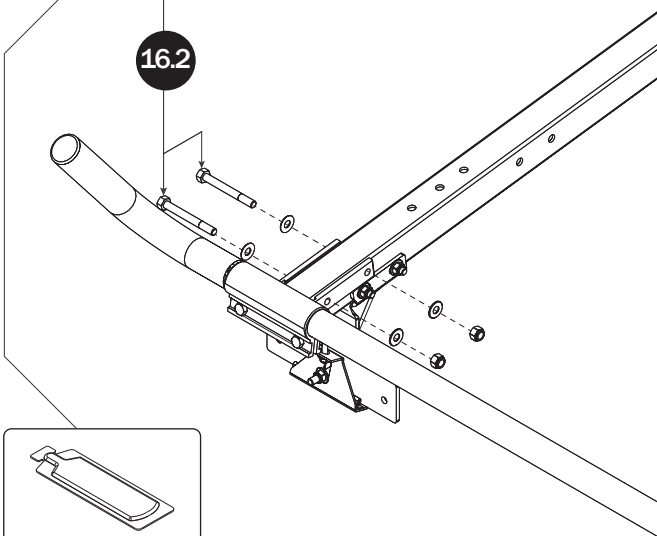
Align Clamp Tube tang holes to Crossbar

16.1



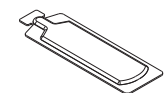
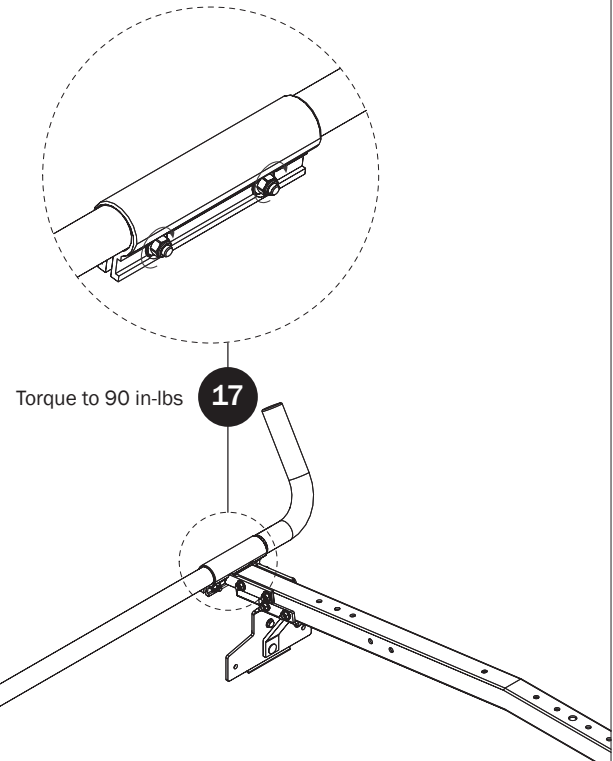
M8 x 70MM  
Hardware  
Torque Nut to 90 in-lb.

16.2

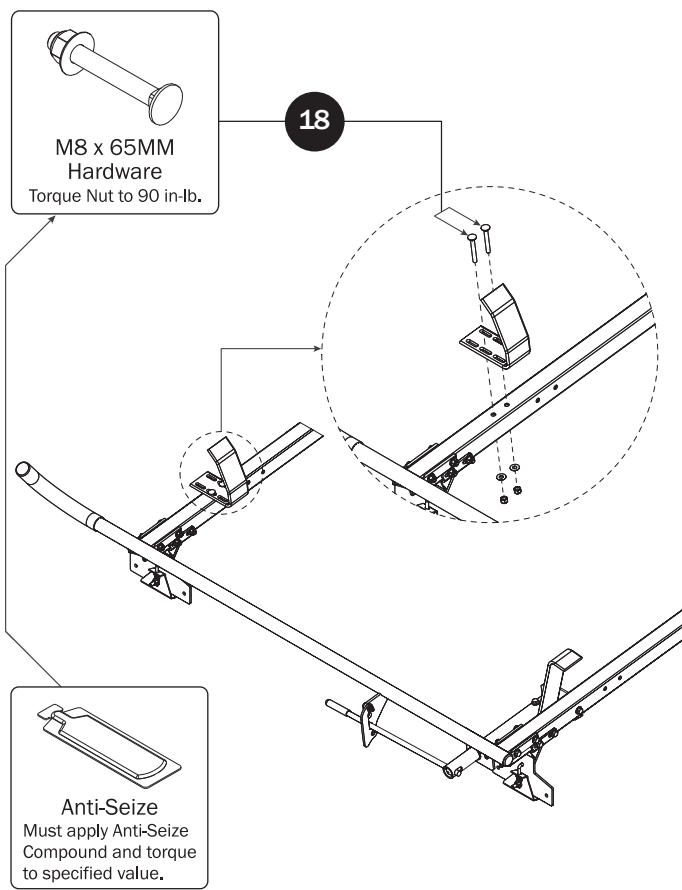
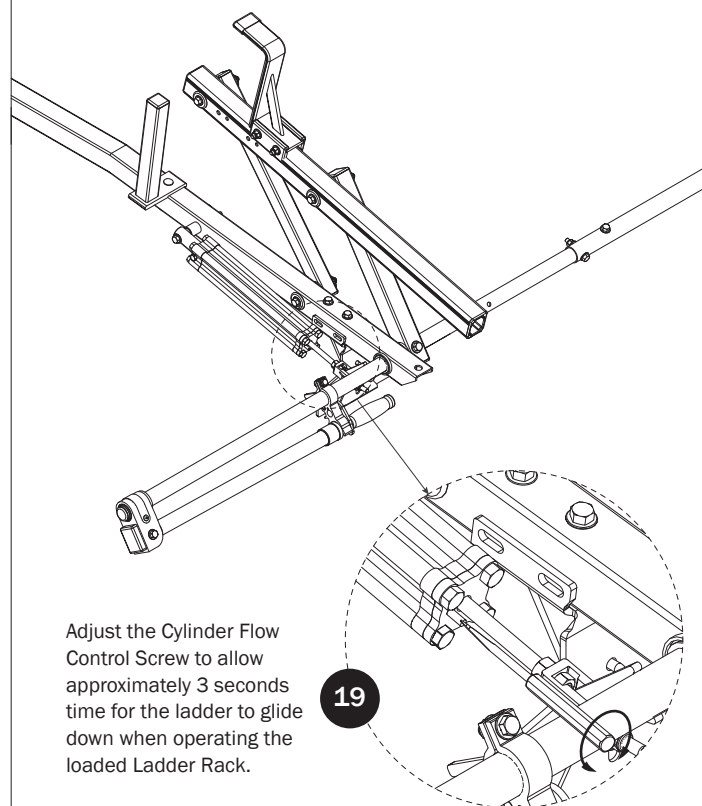


Torque to 90 in-lbs

17



Anti-Seize  
Must apply Anti-Seize  
Compound and torque  
to specified value.

**FRONT LADDER HOOK****CYLINDER ADJUSTMENT****ADDITIONAL INFORMATION**

For additional information regarding your VCC-326 Ladder Rack, please visit the Prime Design website at: [www.primedesign.net](http://www.primedesign.net).

Using a QR code reader in your smart phone or tablet, read the QR Code shown below and follow the same steps as you would from your laptop or computer.

If you're viewing this document as an interactive PDF, you may simply click on the QR Code below to access the Prime Design website.



Page Intentionally Left Blank

