

DS2

Two-Camera Vehicle Event Recording System

Cost-effective Fleet Safety Monitoring

The DS2 combines high-definition video recording, fleet telematics and vehicle operating data to produce a compact, economical driver and vehicle monitoring system. A high-definition (HD) camera captures the road ahead while a second HD camera ensures driver and passenger safety. A built-in LED indicator gives drivers instant feedback to correct unsafe habits immediately. With the most powerful event reconstruction features of any dual-channel event recorder on the market, DS2 gives fleet managers rich event information to identify risks to driver and passenger safety, coach better driver performance and reduce collision, insurance, and fleet operating costs.

Recommended for:

Commercial Vehicles | School Bus | Para-Transit | Shuttles

Powerful Event Reconstruction

High-quality video and telematics data combine to give fleet managers multi-channel video and audio, vehicle speed and location, path travelled, and driver behavior data on a single screen for better incident review and driver coaching.

Built for Fleets

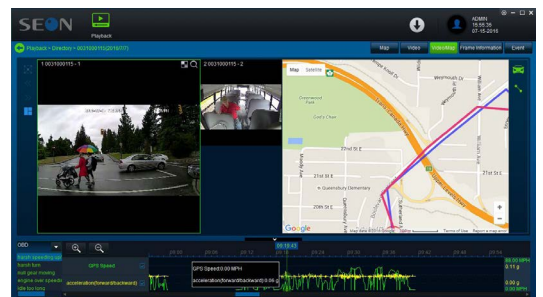
Unlike low-cost consumer dash cameras, the DS2 was built for fleets with commercial-grade hardware, solid-state recording, intuitive video player and Seon's legendary reputation for quality.

Small Footprint. Easy Install.

With no bulky digital video recorder (DVR), the DS2 camera is small enough to fit in the palm of your hand, allowing for quick and easy install behind the rear view mirror to prevent driver distraction or view obstruction.

Advanced Performance Management

Integrates with Seon driver performance management platform to capture unsafe driving events for coaching workflows and driver recognition app.



Configuration app available for download



1.877.630.SEON
www.seon.com

SEON
A Safe Fleet Brand

DS2

Two-Camera Vehicle Event Recording System

Key Features

High-Quality Video

Two high-definition cameras with built-in audio deliver forward & cab-facing camera views.

Full Location History

Built-in GPS displays path travelled and vehicle location on a map synchronized with camera views.

Fast Boot

Video starts recording within 10 seconds of start-up.

Safety Monitoring

Built-in G-force sensor records driving event such as harsh braking or high-speed turning.

Super-Cap Power

Protects video recorded in case of sudden power loss such as an accident.

Complete Event View

View cameras, GPS & telematics all on one screen.

Solid State Recording

No moving parts with up to 466 hours of video/event data recording.

Low-light Operation

Interior Camera features IR Illumination for improved night-time video.

Smooth Playback

Up to 60 frames per second recording prevents 'jumpy' video playback.

Built for Fleets

Continuous or event-based recording with configurable inputs and alarms to support fleet workflows.

Easy Event Exports

Self-playing video with nothing to install make exported events easy to share.

Low Maintenance

SD card does not require reformatting.

Technical Specifications

Video	
Recording Channels	2 HD video, 2 audio
Camera focal length	Camera 1 = 4.0mm, Camera 2 = 2.6mm
Video Resolution	720p or 360p progressive scan
Second Stream Video Resolution	360p or 180p progressive scan
Maximum Frame Rate	Up to 25 FPS per camera; Camera 1 & Camera 2 @ 720p Main Stream (Second stream enabled) Up to 30 FPS per camera; Camera 1 & Camera 2 @ 720p Main Stream (Second stream disabled)
Quality Settings	Adjustable, 8 levels; 1 (best) ~ 8 for alarm recording
Overwrite modes	Auto overwrite, No overwrite, Minimum days (1 – 31)
Display modes	Single camera or two cameras simultaneously
Playback rate	Frame advance, FFD up to 16x, Slow FWD ½ to 1/16
Search function	Time & Date, by channel, alarm
User Configuration	via iOS or Android Mobile App
On screen display	Time, speed, vehicle number, GPS, channel name, device ID, position
Video Playback	MS Windows-based video player

Storage	
Media	SD Card, security cover (removable)
Capacity	Up to 512 GB
Input/Output	
Network Interface	Wifi
Sensor	2 inputs active Hi or active Lo
Electrical	
Voltage range	8 – 32 VDC
Transient protection	700 W per signal input
Mechanical Dimensions	
Forward Camera/Recorder	98 x 58 x 37 mm
Weight	3 lbs (including two cameras, recorder, cabling and power source)
Environmental	
Operating temperature	-40F to +158F (-40C to +70C)
Approvals	
Emissions	FCC and CE
Diagnostics	
Engine Computer Support	OBD-II and SAE J1939

1016-DS2-SS-ST-41718

©2018 Seon Inc. All rights reserved. No part of this publication may be reproduced by any means without written permission from Seon Inc. The information in this publication is believed to be accurate in all respects. However, Seon Inc. cannot assume responsibility for any consequences resulting from the use thereof. The information contained herein is subject to change without notice. Revisions or new editions to the publication may be issued to incorporate such changes.

1.877.630.SEON
www.seon.com

SEON
A Safe Fleet Brand