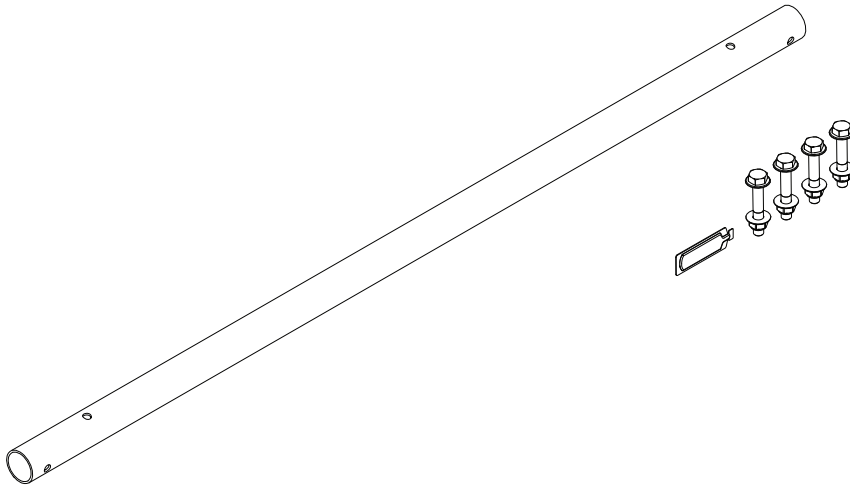


# PRIME DESIGN™

A Safe Fleet Brand

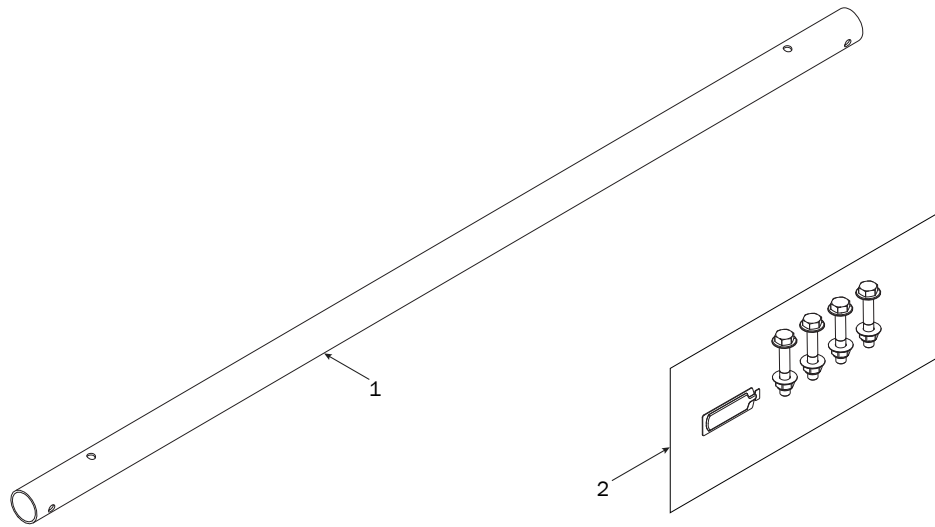


## *36.00" CONNECTING BAR*

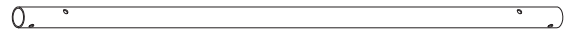
PRIME DESIGN, A SAFE FLEET BRAND • Address: 1689 Oakdale Avenue #102, West St Paul, Minnesota 55118  
Toll Free: 1.8.PRIME.RACK • Fax: 651-552-1799 • Email: [info@primedesign.net](mailto:info@primedesign.net) • Website: [www.primedesign.net](http://www.primedesign.net)

FEA 0021

# CONTENTS OVERVIEW



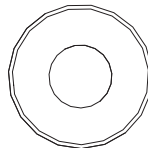
1—Connecting Bar ..... (Qty 1)  
36.00"



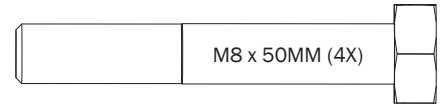
2—HKT-8404 ..... (Qty 1)  
Connecting Bar Feature Hardware Kit



Lock Nut (4X)



Flat Washer (8X)



M8 x 50MM (4X)

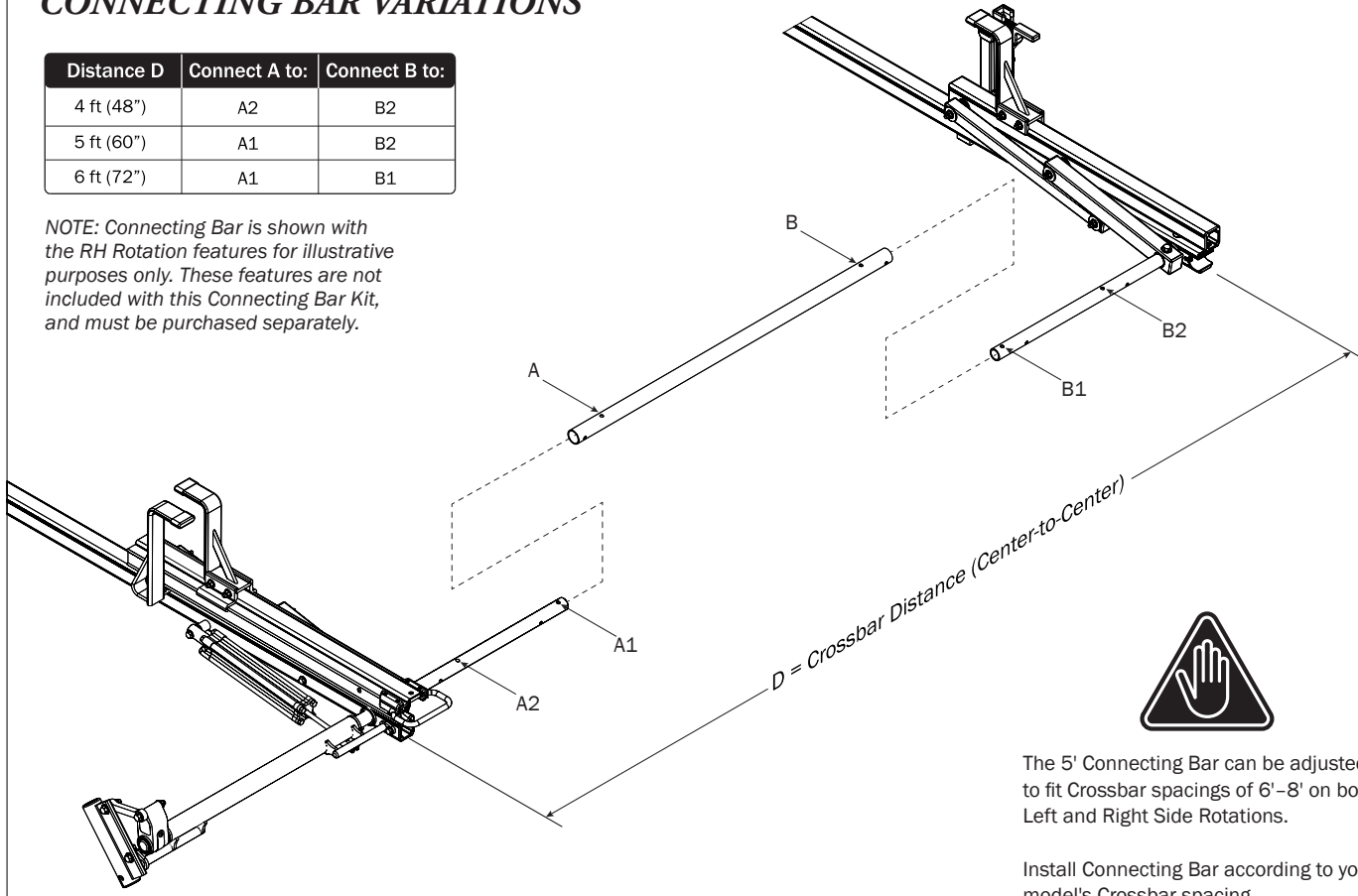


Anti-Seize (1X)

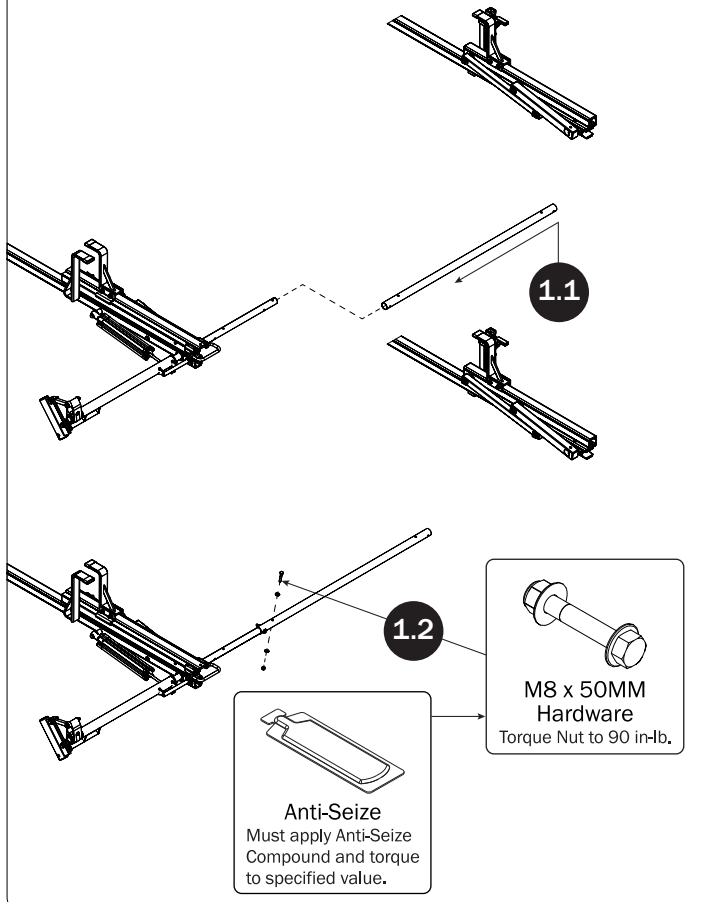
# CONNECTING BAR VARIATIONS

Distance D	Connect A to:	Connect B to:
4 ft (48")	A2	B2
5 ft (60")	A1	B2
6 ft (72")	A1	B1

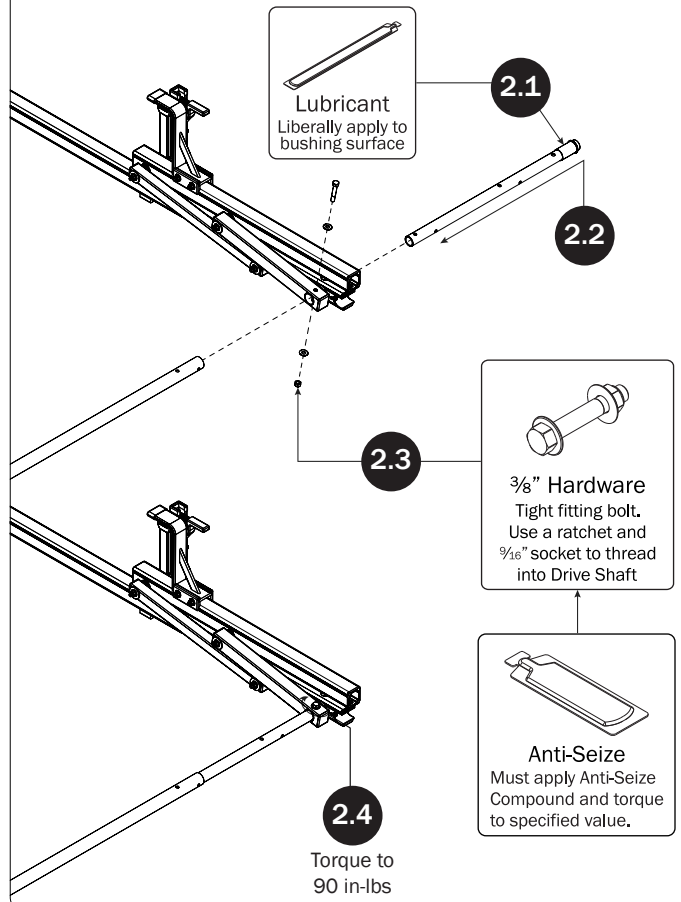
NOTE: Connecting Bar is shown with the RH Rotation features for illustrative purposes only. These features are not included with this Connecting Bar Kit, and must be purchased separately.



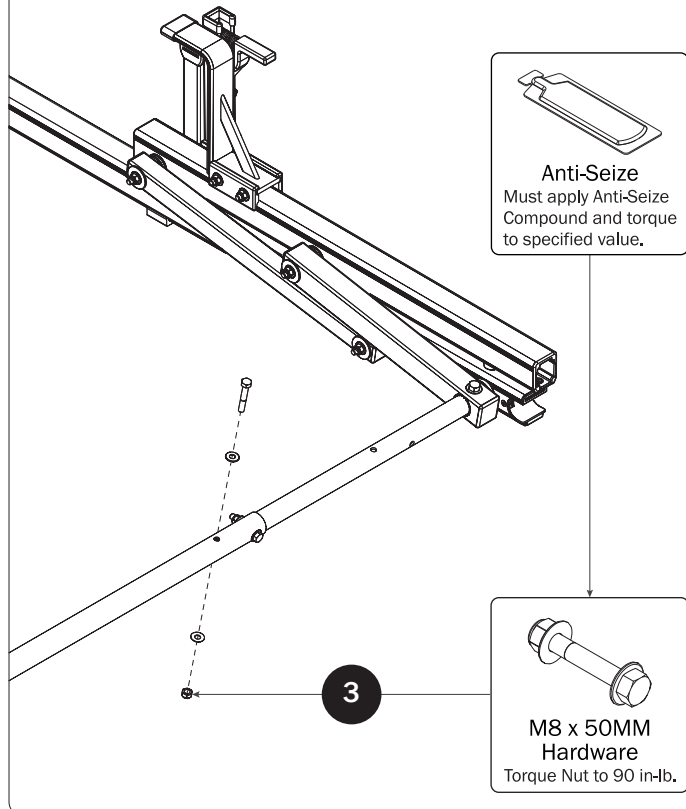
## CONNECTING BAR



## FRONT DRIVE SHAFT



## CONNECTING BAR FASTENERS



**NOTE:** This completes the assembling of FEA-0021.

If applicable, refer to your next FEA Assembly Manual.

If completed, refer back to your FBM Assembly Manual, and resume assembling at Step 5.1.

**WARNING:** Failure to position the Crossbars as shown in your FBM Assembly Manual may result in damage to the sliding door and/or ladder rack.

USAM-FEA0021-US01 Rev-A 0619