

Over the Cab Material Rack

For Open Bed Service Bodies with Open Top Lids

PRIME DESIGN™

A Safe Fleet Brand

Add capability to your 8, 9, or 11 foot service body without compromising features, style, and durability.



Aluminum

All Aluminum construction with stainless steel fasteners for increased longevity.



Rear Crossbar Latch

Removable rear crossbar featuring a quick release latch.



Tested Design

Tested and rated for 1200 lb. max load capacity.



Fork Lift Loadable

Raised crossbars on the side rails that provide clearance to load / unload cargo from the side with forklift.

Over the Cab Material Rack

For Open Bed Service Bodies with Open Top Lids



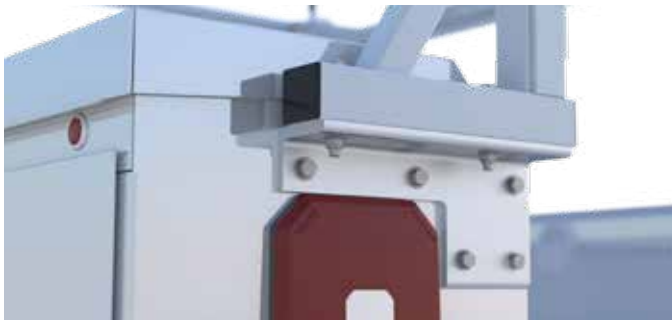
OTC-8005

8 & 9 ft. Body / Extended and Crew Cab Chassis



OCM-3032

Optional Extra Crossbar Assembly



Mounting Location - Rear



Mounting Location - Front

| | 8 & 9 Foot Service Body | | | | | | | | 11 Foot Service Body | |
|----------------------------|----------------------------|-----------|----------------------------|-----------|----------------------------|-----------|----------------------------|-----------|----------------------------|----------------------------|
| Rack Model | OTC-8004 | | OTC-8005 | | OTC-8007 | | OTC-8008 | | OTC-8006 | OTC-8009 |
| Service Body Height | Standard Height | | Standard Height | | Low Profile Height | | Low Profile Height | | Standard Height | Low Profile Height |
| Chassis Type | Standard Cab | | Extended & Crew Cab | | Standard Cab | | Extended & Crew Cab | | Any | Any |
| Mounting Location | Rear / Front Inside Corner | | Rear / Front Inside Corner | | Rear / Front Inside Corner | | Rear / Front Inside Corner | | Rear / Front Inside Corner | Rear / Front Inside Corner |
| Service Body Length | 8-Foot | 9-Foot | 8-Foot | 9-Foot | 8-Foot | 9-Foot | 8-Foot | 9-Foot | 11-Foot | 11-Foot |
| Body Length | 98" | 108" | 98" | 108" | 98" | 108" | 98" | 108" | 132" | 132" |
| Mount Spacing | 95" | 107" | 95" | 107" | 95" | 107" | 95" | 107" | 131" | 131" |
| Over the Cab Offset | 46" | 34" | 58" | 46" | 46" | 34" | 58" | 46" | 34" | 34" |
| Overall Length | 144" | 144" | 156" | 156" | 144" | 144" | 156" | 156" | 168" | 168" |
| Channel Lengths | 72" / 72" | 72" / 72" | 84" / 72" | 84" / 72" | 72" / 72" | 72" / 72" | 84" / 72" | 84" / 72" | 84" / 84" | 84" / 84" |
| Weight | 129 lbs. | 129 lbs. | 133 lbs. | 133 lbs. | 129 lbs. | 129 lbs. | 133 lbs. | 133 lbs. | 137 lbs. | 137 lbs. |

ML-7.2-4105-Rev-A-09/03/2020

Copyright ©2020 Safe Fleet and its subsidiaries. All rights reserved. No part of this publication may be reproduced by any means without written permission from Safe Fleet. The information in this publication is believed to be accurate. However, Safe Fleet does not make any representation or warranty to that effect and does not assume responsibility for any consequences resulting from use of such information. Revisions or new editions of the publication may be issued (or not issued) in our discretion to incorporate such changes.

1.877.463.7225
safefleet.net

SAFE FLEET
Driving Safety Forward™