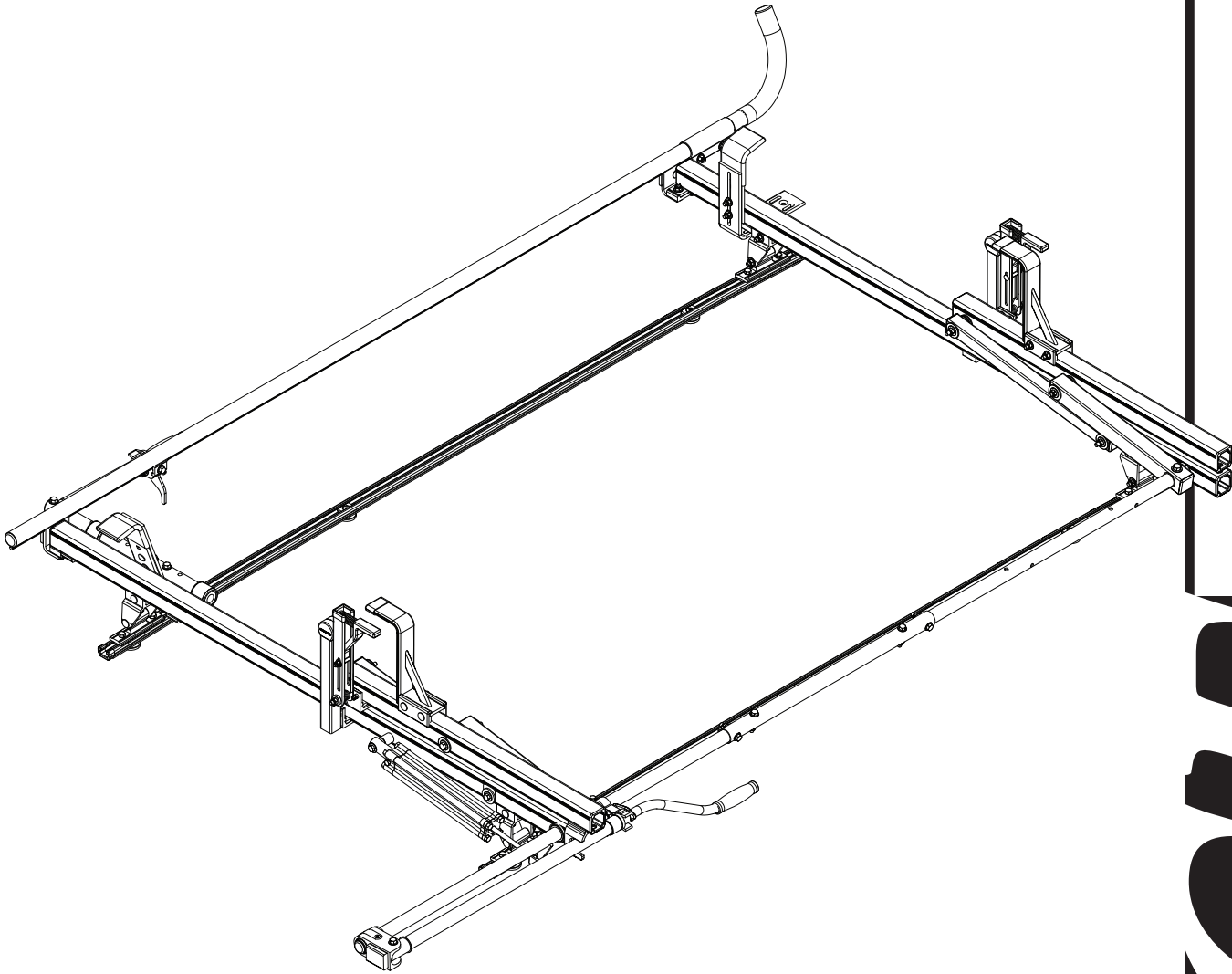
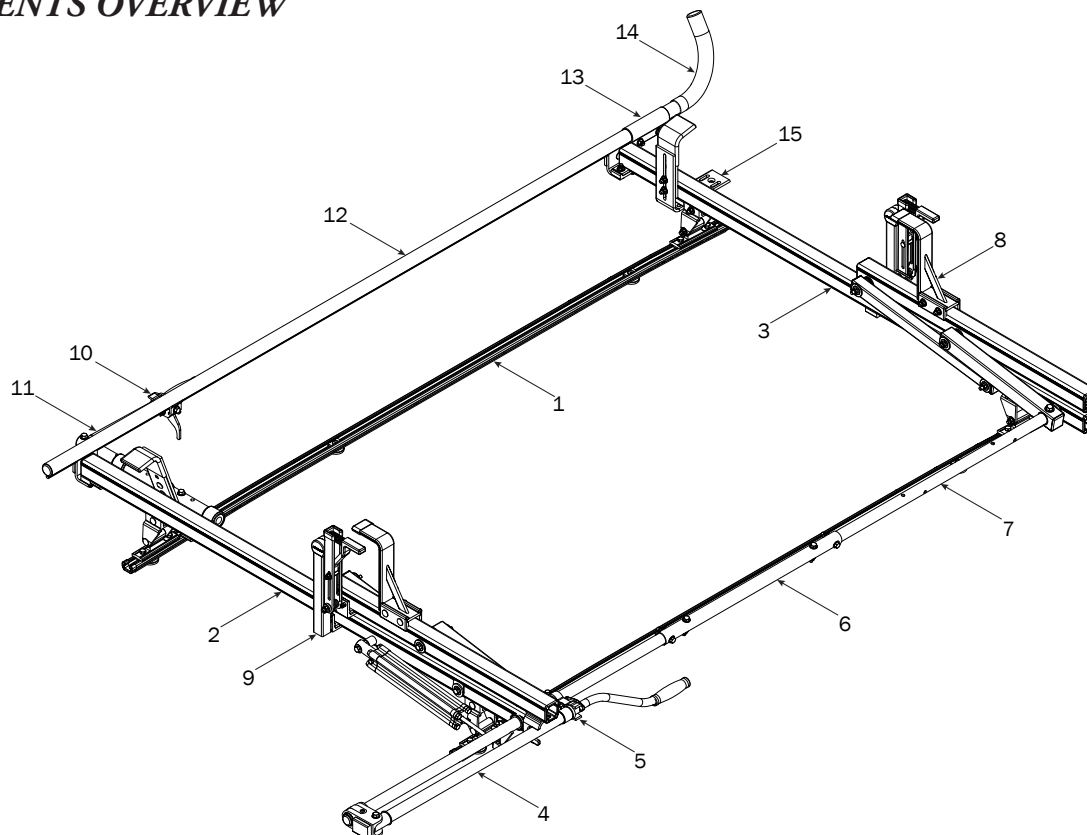


PRIME DESIGN™

A Safe Fleet Brand



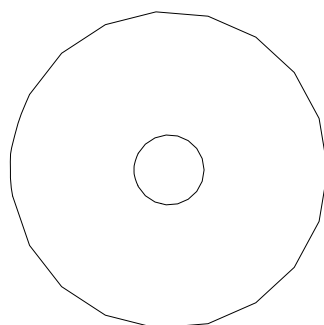
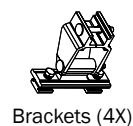
VCR **CH**



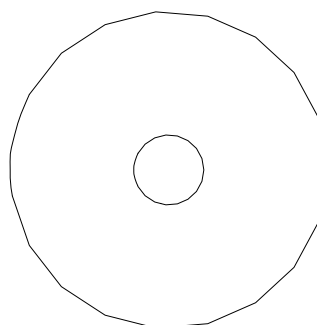
1—FBM-0045 (Qty 1)
Channels w/Hardware



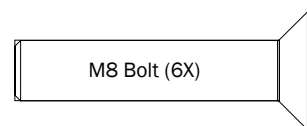
End Caps (4X)



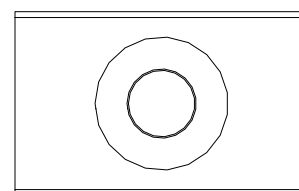
Nylon Washer (6X)



Foam Gasket (6X)

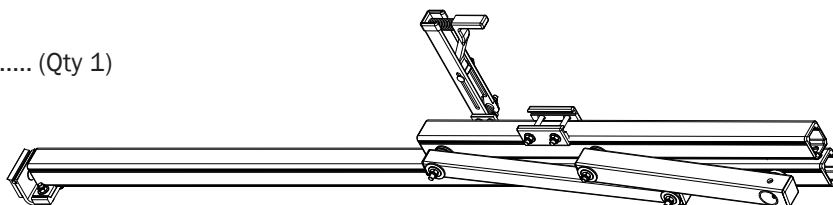


M8 Bolt (6X)

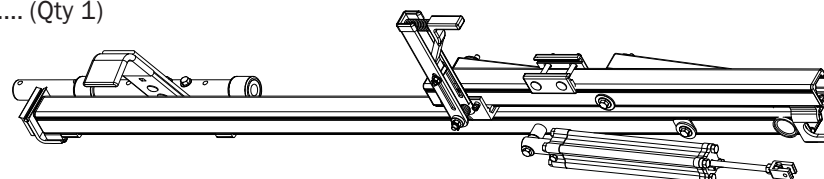


Flex Channel Connector (6X)

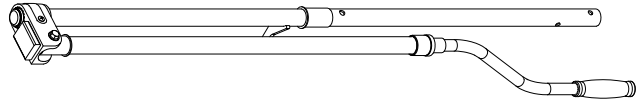
2—Rear Crossbar Assembly (Qty 1)



3—Front Crossbar Assembly (Qty 1)



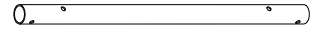
4—Rear Drive Shaft..... (Qty 1)
Right Hand, B4 Version, 46.00"



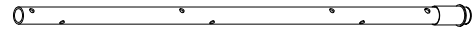
5—Handle Latch Assembly (Qty 1)
Right Hand



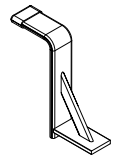
6—Connecting Bar..... (Qty 1)
24.00"



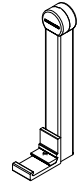
7—Front Drive Shaft (Qty 1)
B Version, 35.75"



8—Z Post (Qty 2)
Adjustable, 7.25"



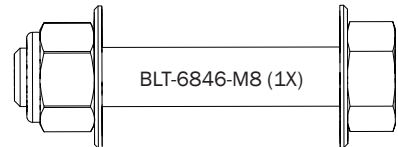
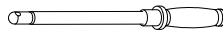
9—L Post (Qty 2)
Gen2, Roller Cap , 9.25"



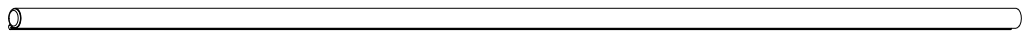
10—Handle Latch Assembly (Qty 1)
Left Hand, Clamp Down



11—Clamp Down Handle Assembly (Qty 1)
With Hardware



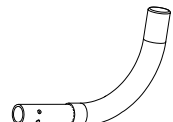
12—Clamp Down Tube (Qty 1)
80.00"



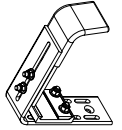
13—Quick Clamp Tube Splice..... (Qty 1)
5.00"



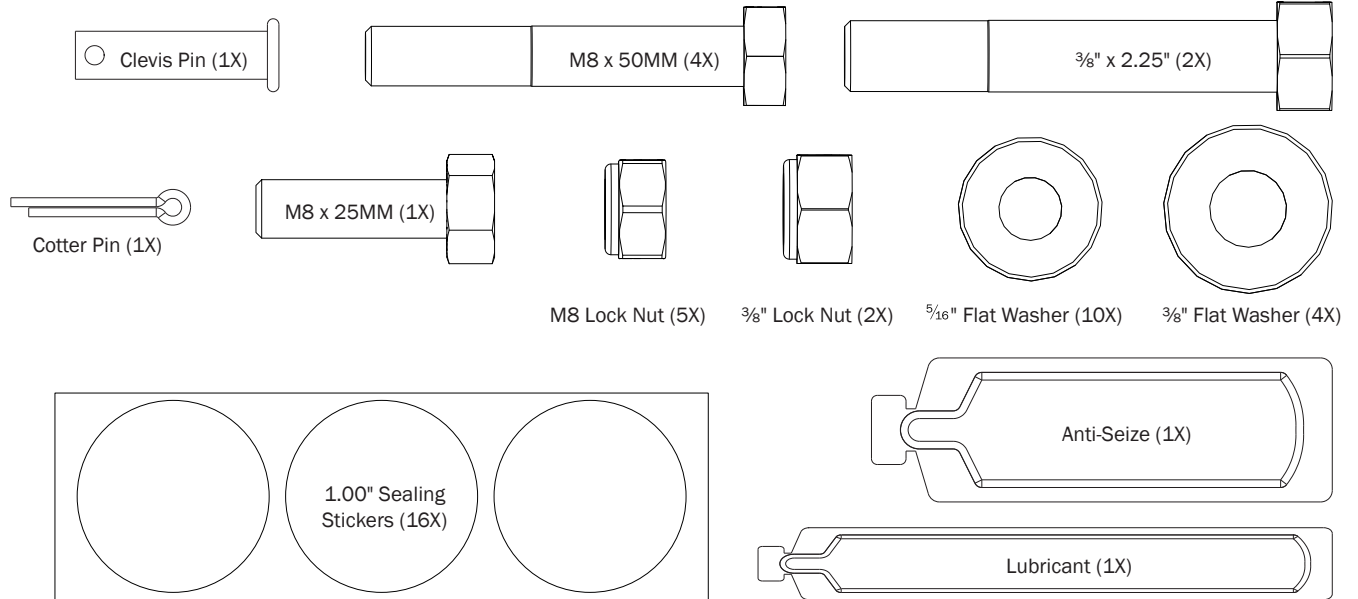
14—Removeable Horn (Qty 1)
w/Cap, 15.00"



15—Front Hook Assembly..... (Qty 1)
Heavy Duty, Adjustable



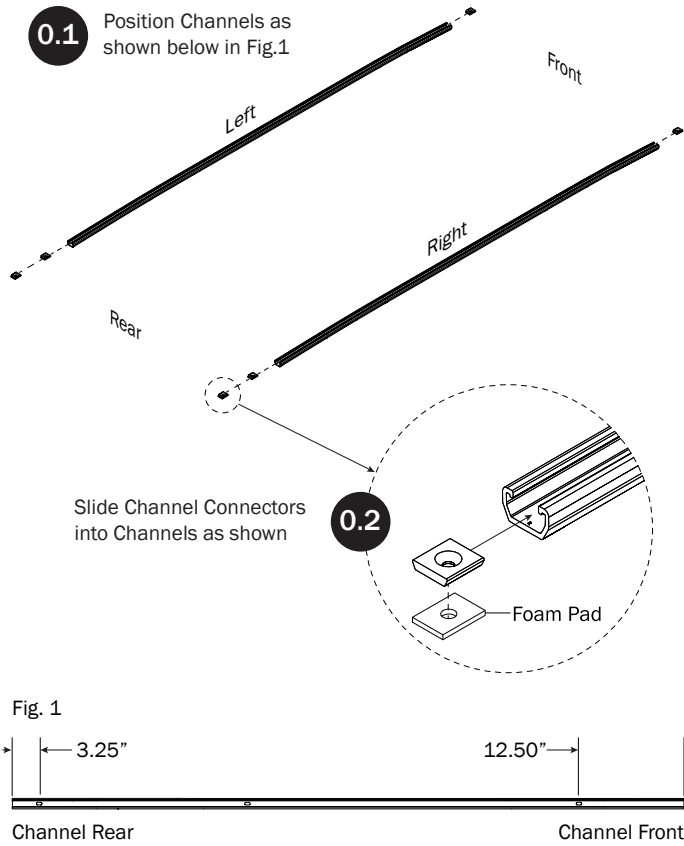
16—HKT-8163-Rotation Hardware Kit (Qty 1)
(Not called out in Overview)



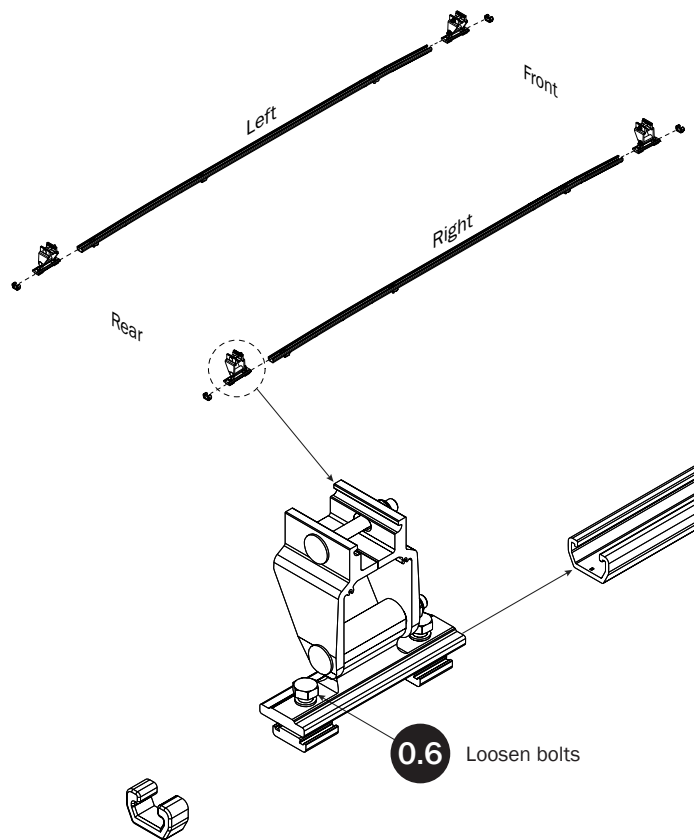
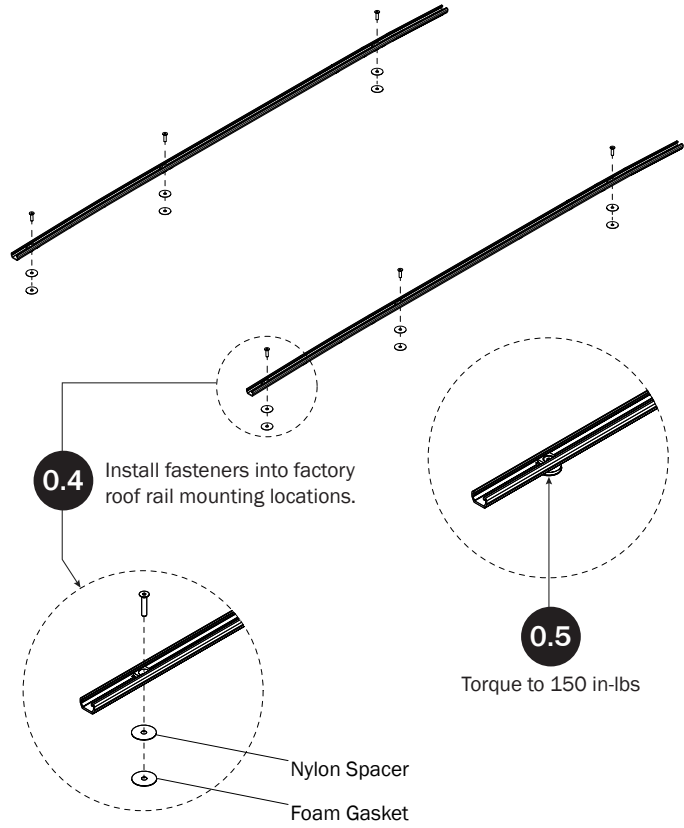
FBM-0045

CHANNELS TO ROOF

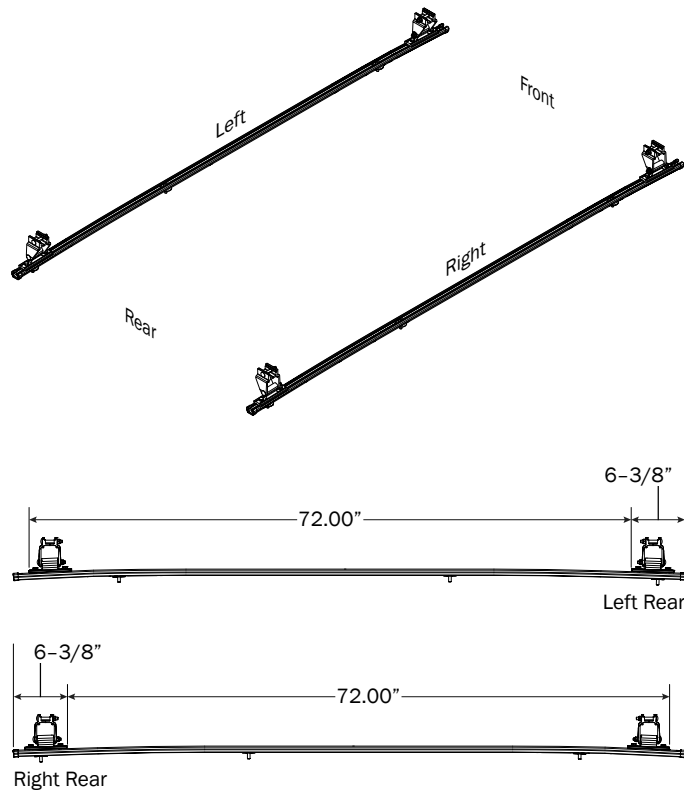
- 0.1** Position Channels as shown below in Fig.1



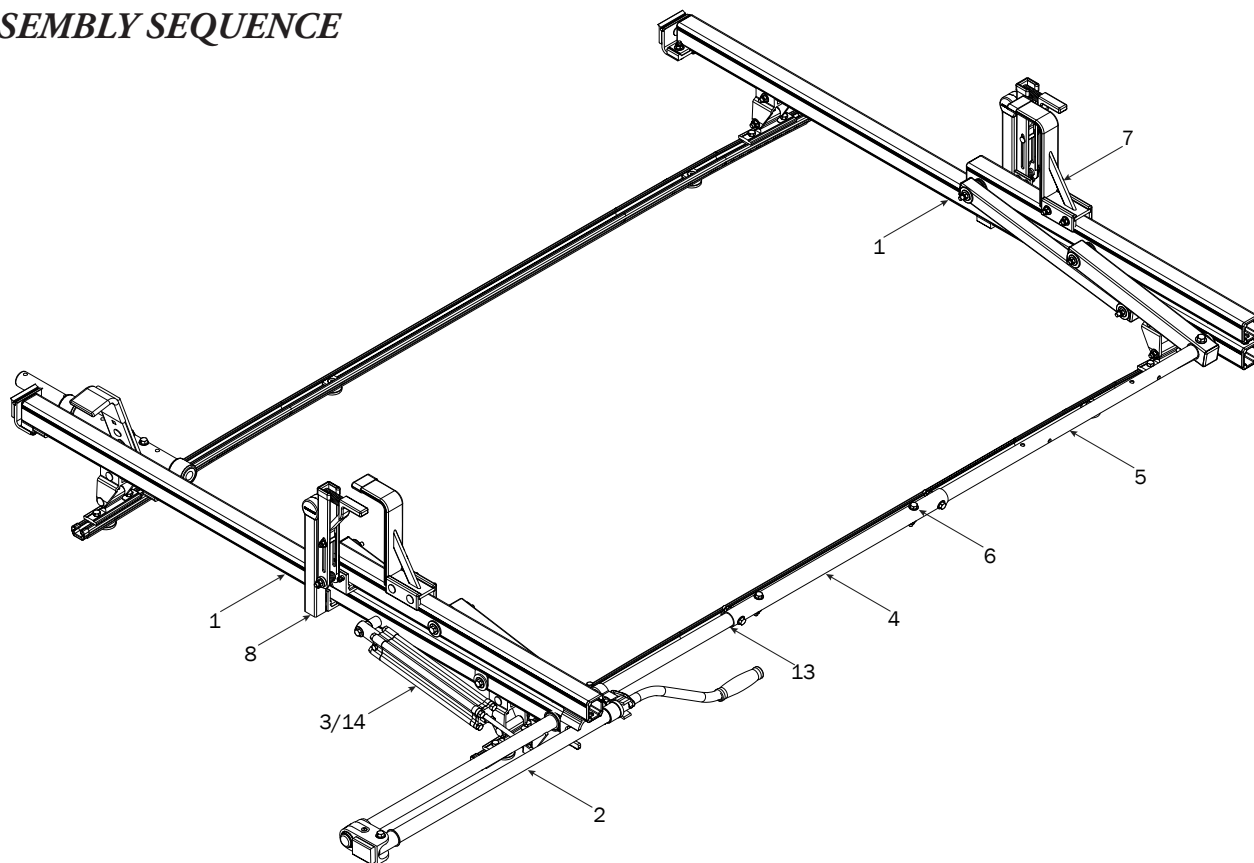
- 0.3** Install Channels into roof Channel groove as shown



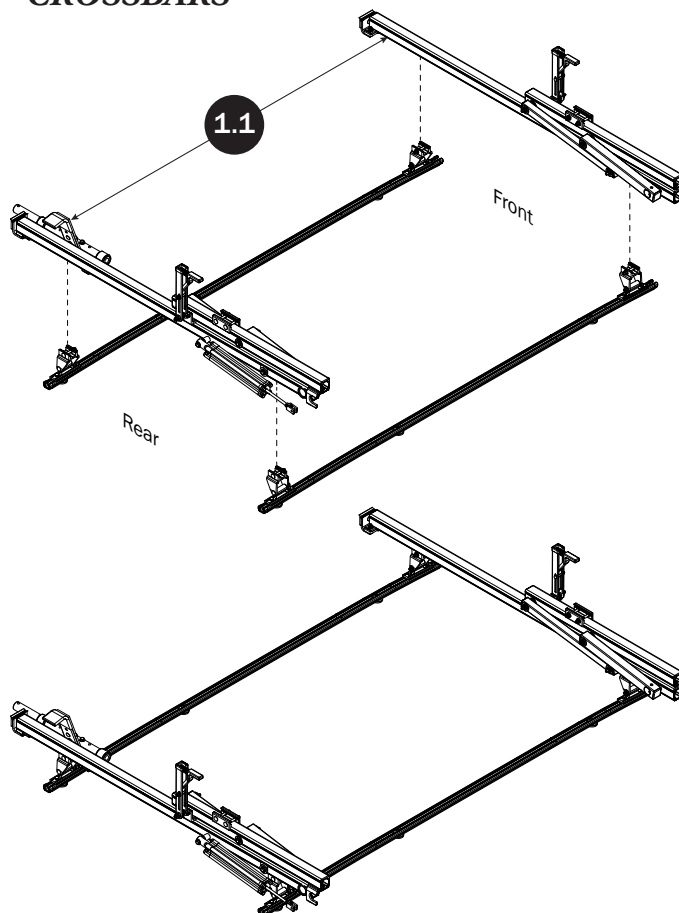
- 0.7** Set to distances then torque Rear Bracket nuts to 90 in-lbs



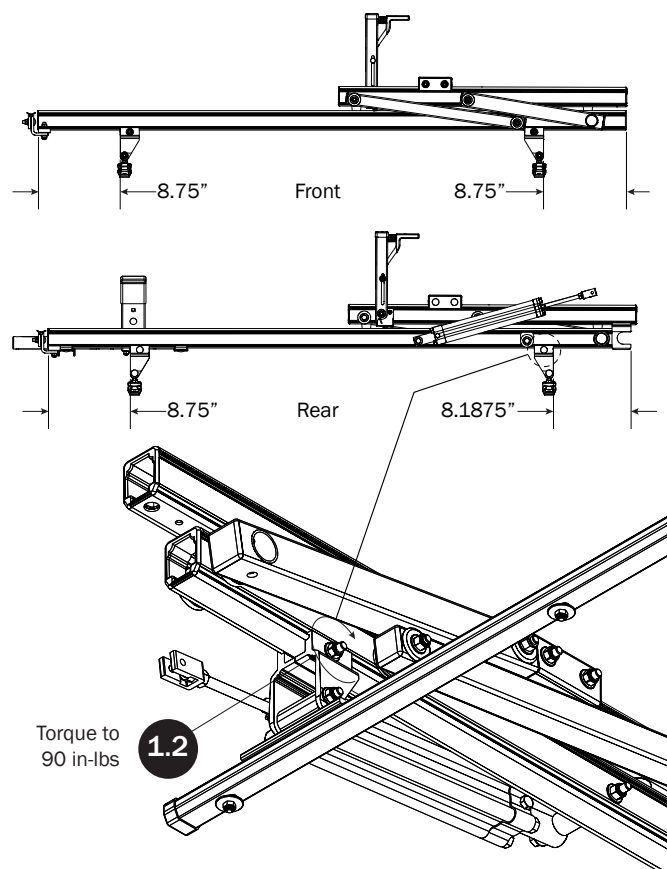
RIGHT ROTATION ASSEMBLY SEQUENCE

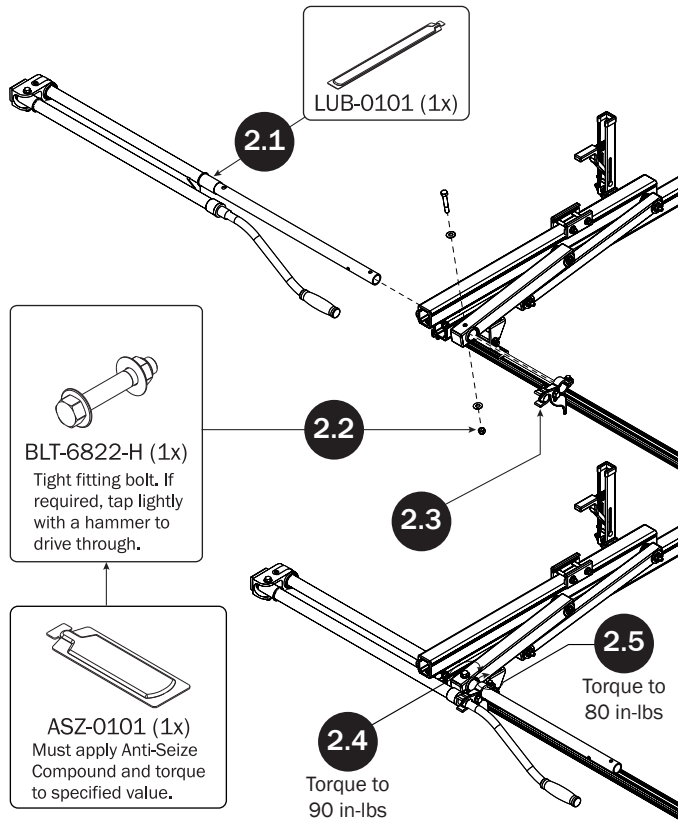
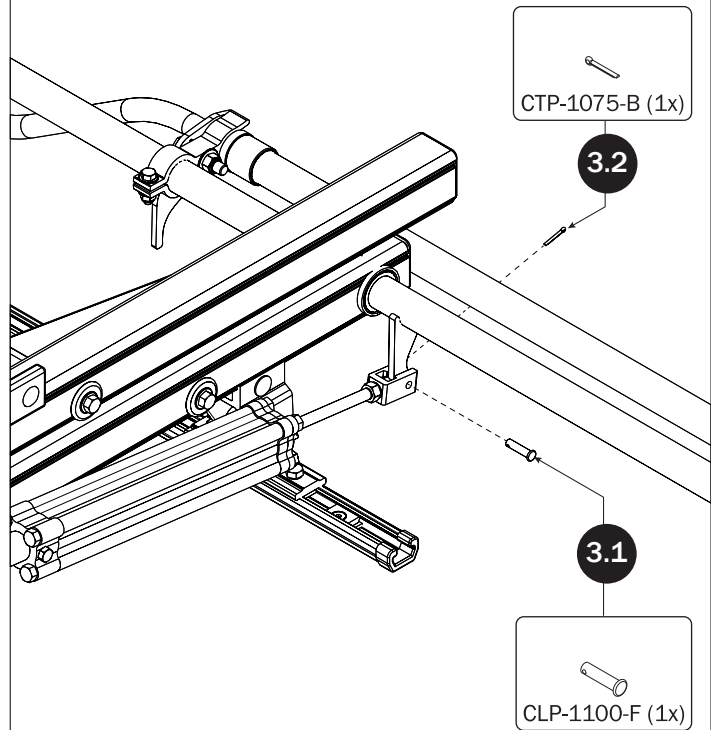
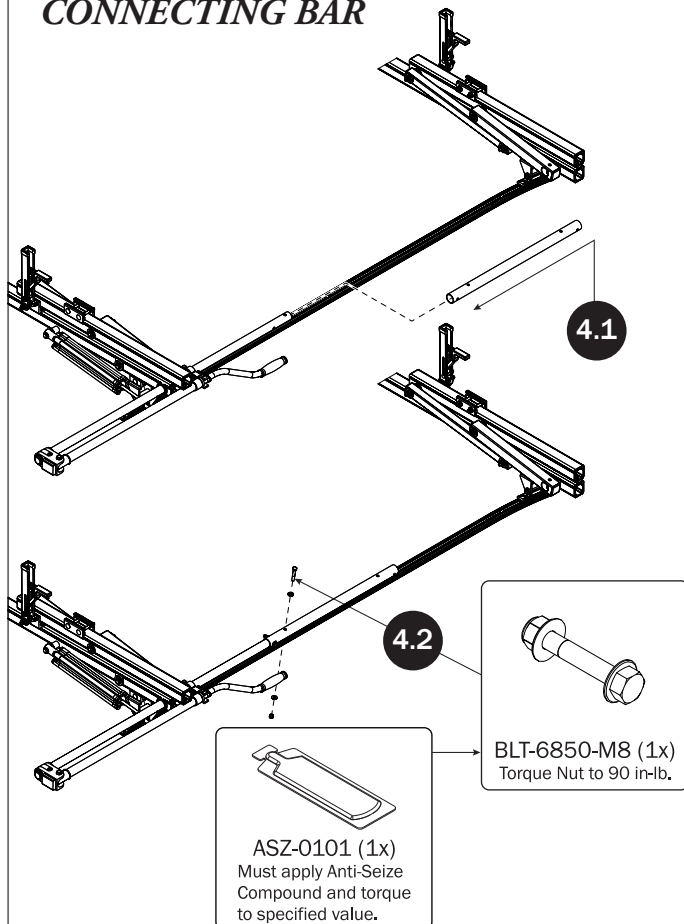
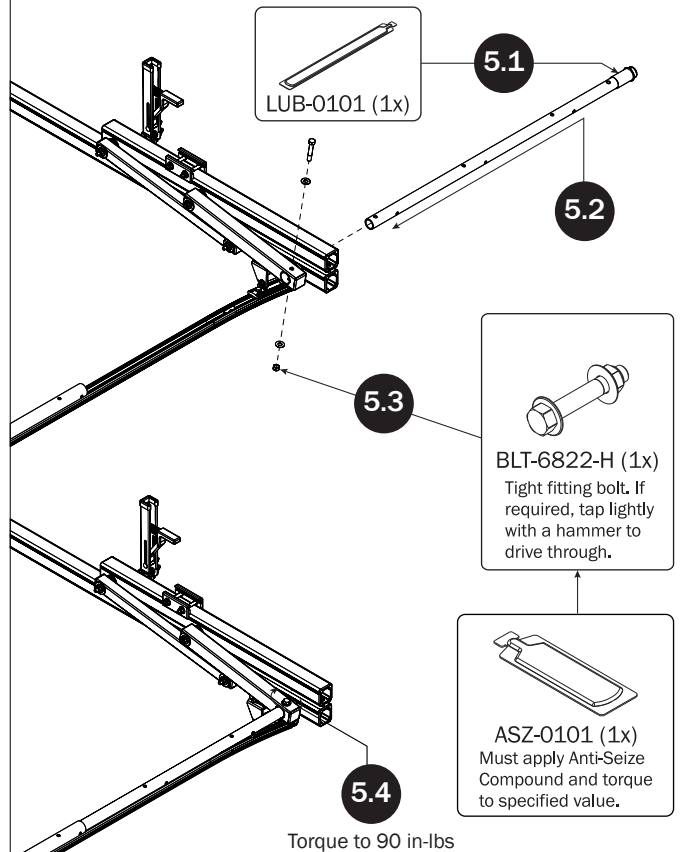


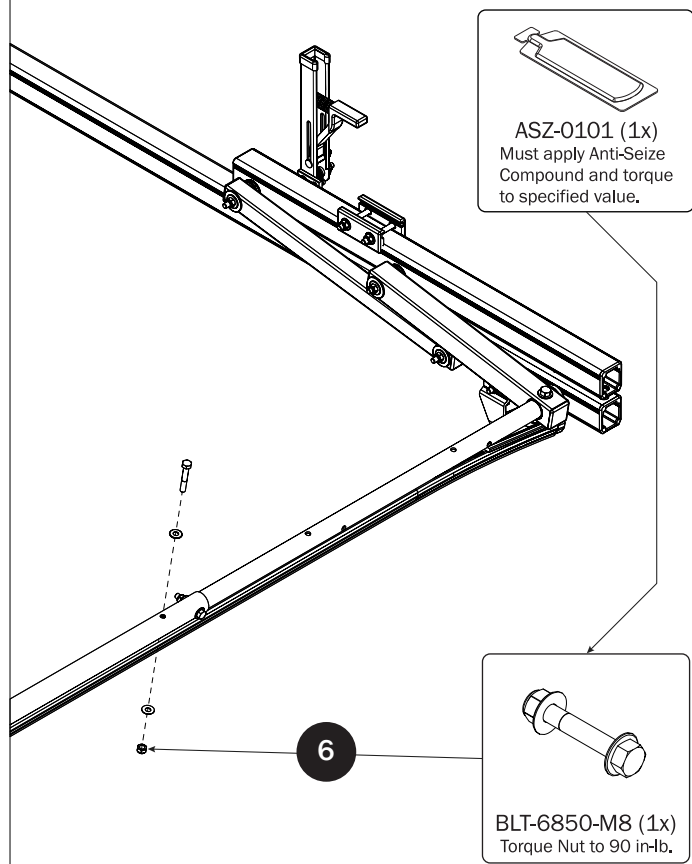
CROSSBARS



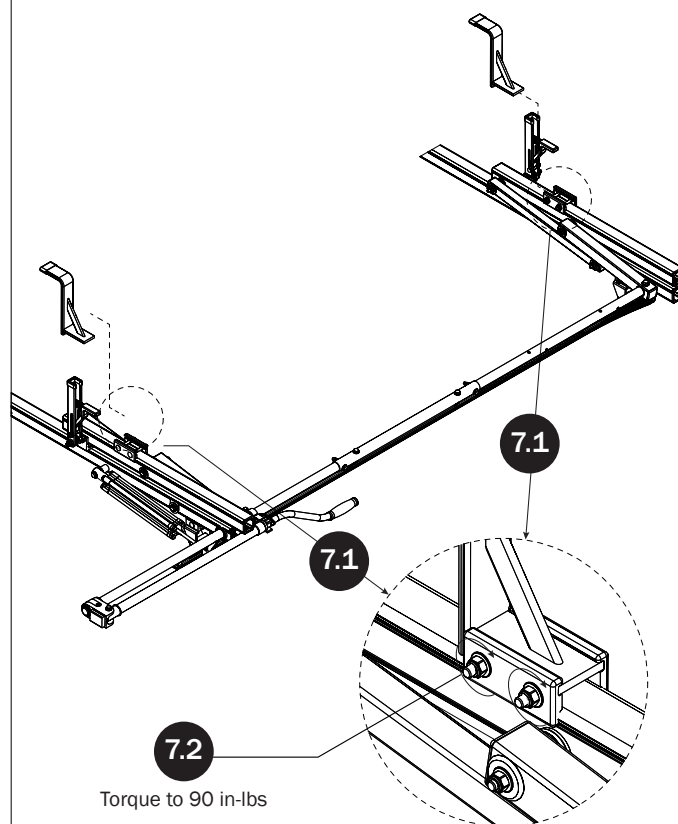
CROSSBAR ADJUSTMENT



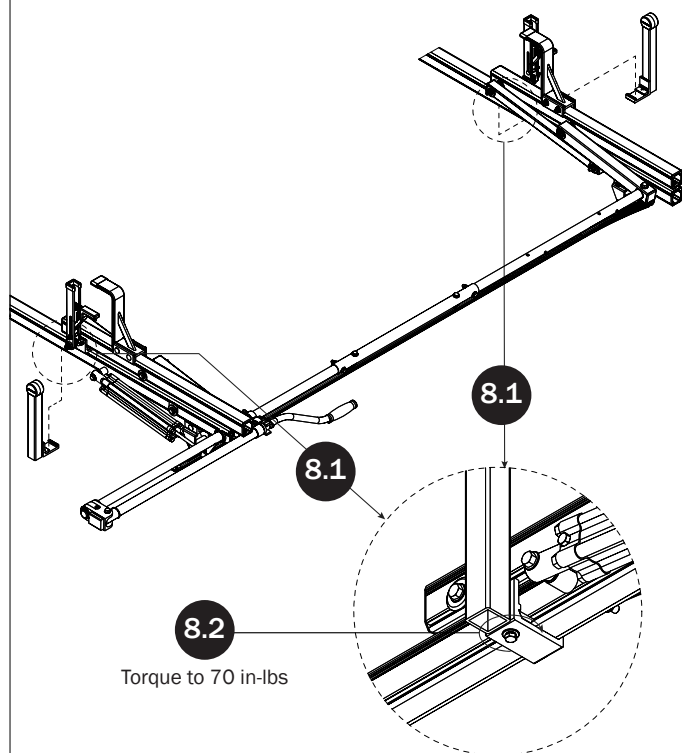
REAR DRIVE SHAFT**CYLINDER HARDWARE****CONNECTING BAR****FRONT DRIVE SHAFT**

CONNECTING BAR FASTENERS**Z POSTS**

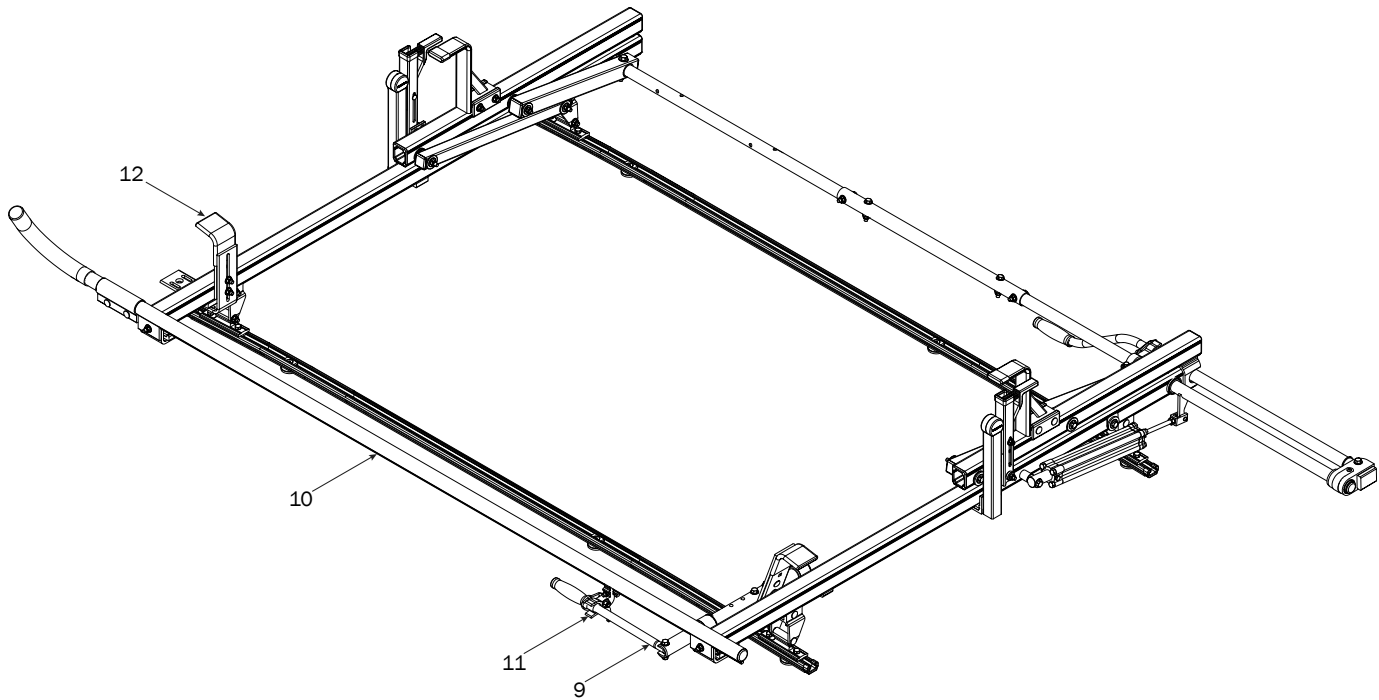
SEE QUICK START GUIDE FOR ADJUSTMENTS

**L POSTS**

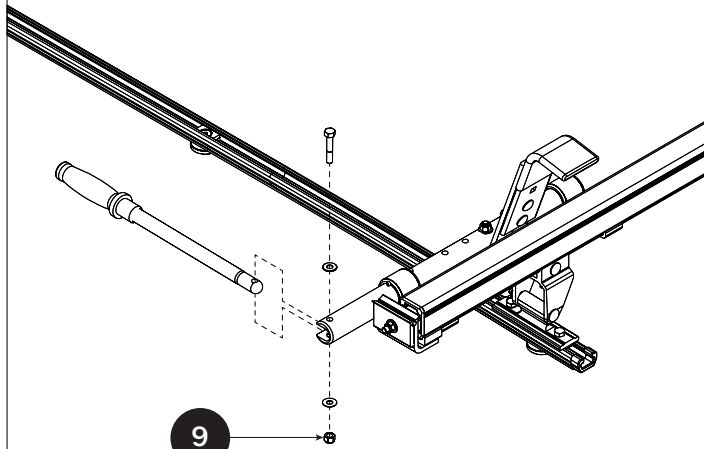
SEE QUICK START GUIDE FOR ADJUSTMENTS



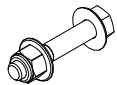
LEFT CLAMP DOWN ASSEMBLY SEQUENCE



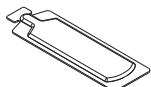
CLAMP DOWN HANDLE



9

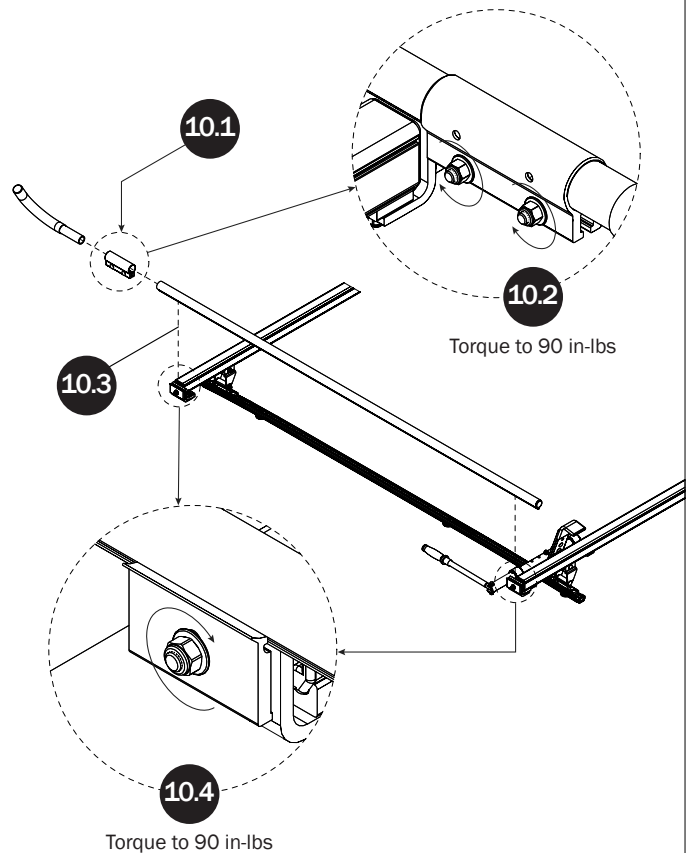


BLT-6846-M8 (1x)
Torque Nut to 90 in-lb.



ASZ-0101 (1x)
Must apply Anti-Seize
Compound and torque
to specified value.

CLAMP DOWN TUBE



10.1

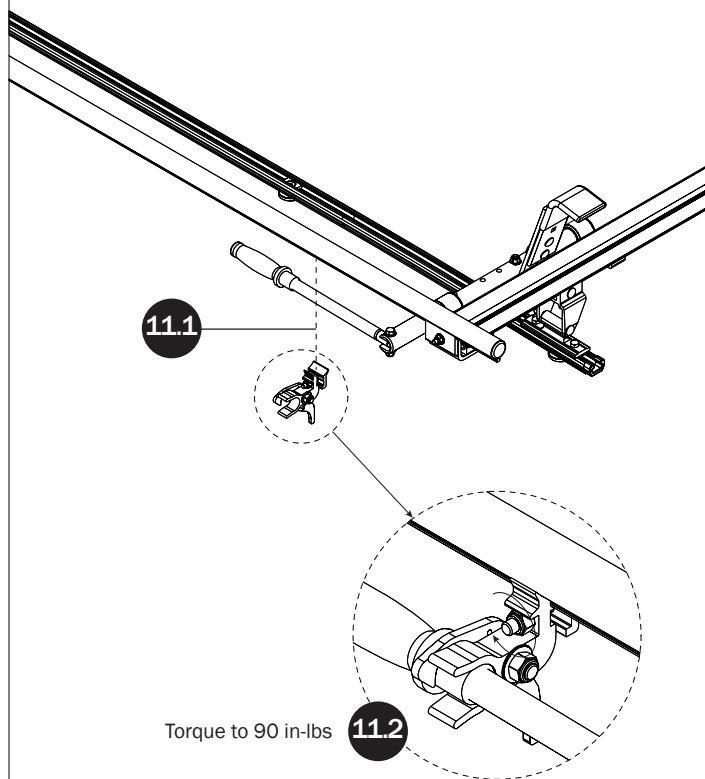
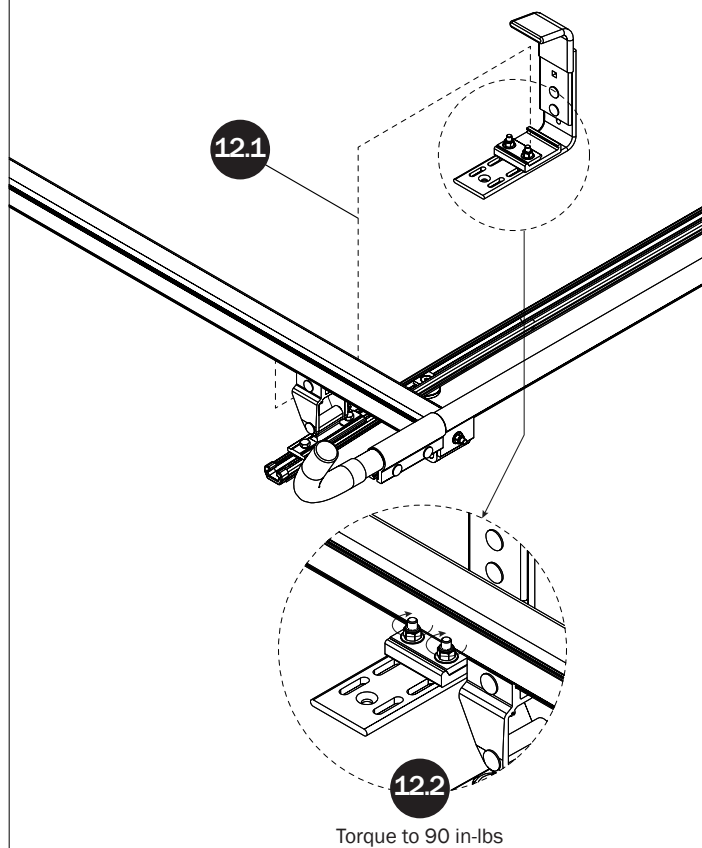
10.2

Torque to 90 in-lbs

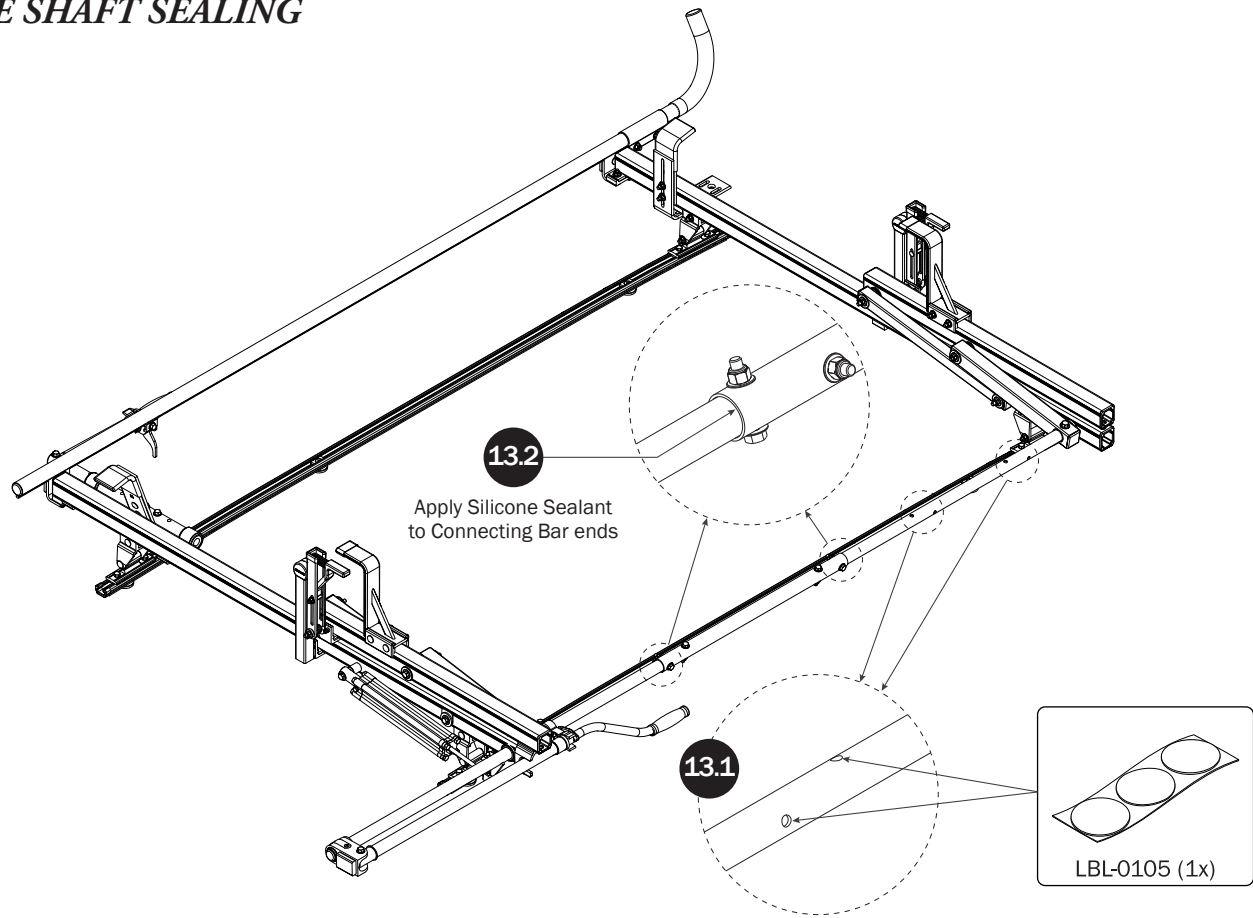
10.3

10.4

Torque to 90 in-lbs

HANDLE LATCH**FRONT LADDER HOOK**
SEE QUICK START GUIDE FOR ADJUSTMENTS

DRIVE SHAFT SEALING



CYLINDER ADJUSTMENT

