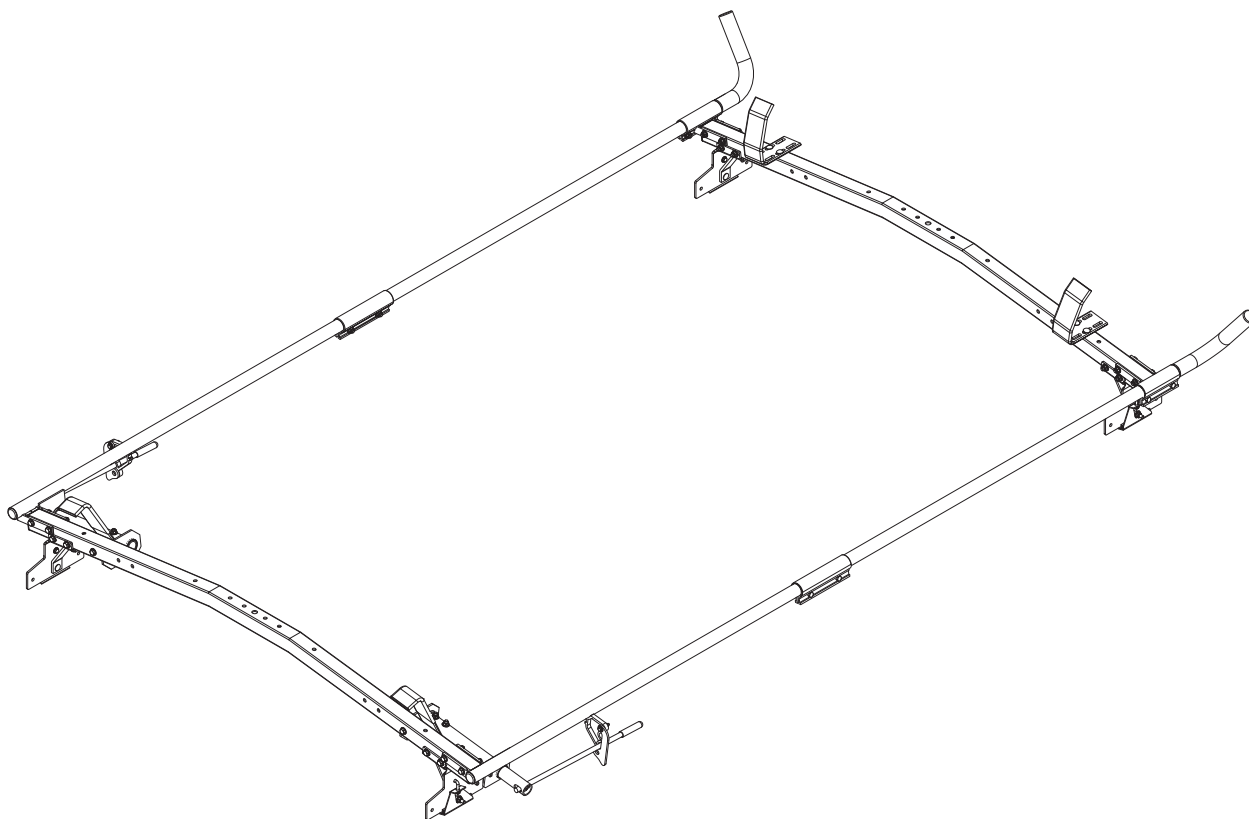
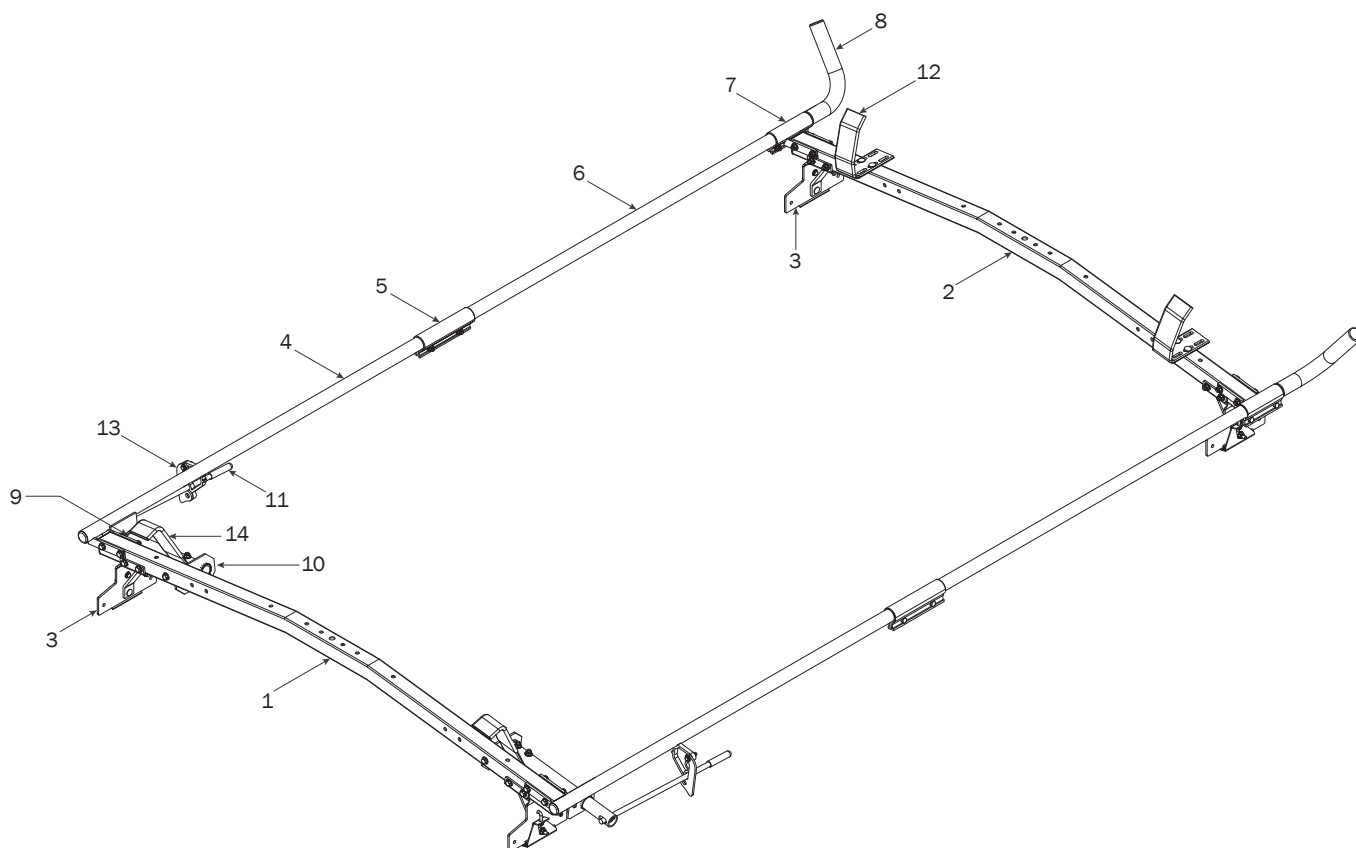


PRIME DESIGN™

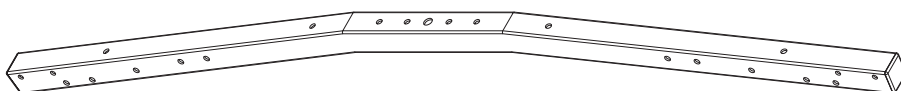
A Safe Fleet Brand



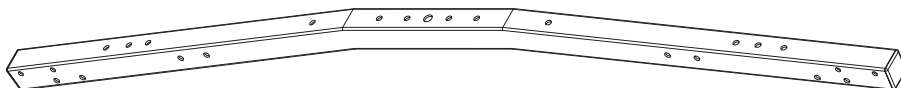
VCC 226



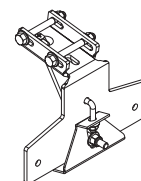
1—Rear Crossbar Assembly (Qty 1)



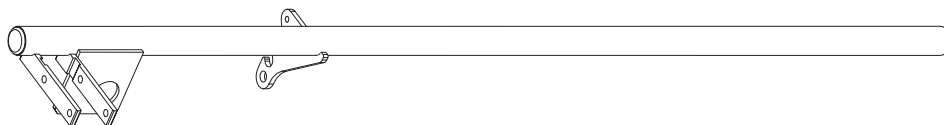
2—Front Crossbar Assembly (Qty 1)



3—Mounting Bracket Assembly (Qty 4)
Horizontal, Low Mounting, 4.50", GM



4—Clamp Down Tube Assembly (Qty 2)
Front, 50.00"



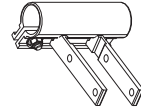
5—Clamp Down Tube Splice (Qty 2)
7.00"



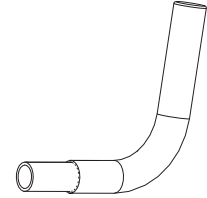
6—Clamp Down Tube(Qty 2)
Front, 48.00"



7—Clamp Down Tube Splice(Qty 2)
Welded, 5.00"



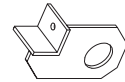
8—Clamp Down Horn(Qty 2)
Left Hand, with Cap, 15.00"



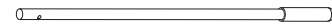
9—Clamp Down Handle Tube(Qty 2)
14.50"



10—Clamp Down Handle Tube Bracket(Qty 2)
Rear, Left Hand



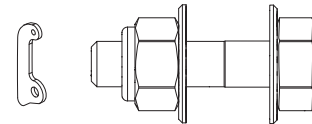
11—Clamp Down Handle(Qty 2)
With Black Grip, 18.00"



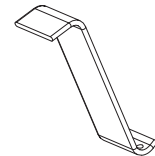
12—Clamp Down Hook(Qty 2)
Front, Slotted



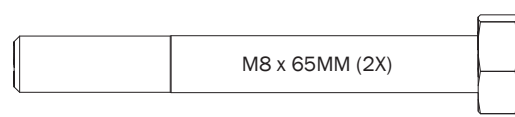
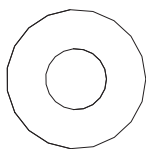
13—Handle Latch Lock Plate (Qty 2)
With Hardware, Gen1



14—Clamp Down Hook (Qty 2)
Rear



HKT-8112-Clamp Down Hardware Kit



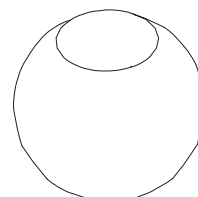
M8 Locknut (18x) 5/16" Flat Washer (32X)



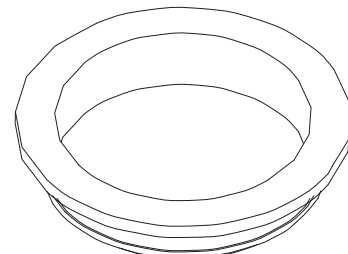
Ball Set Screw (2X)



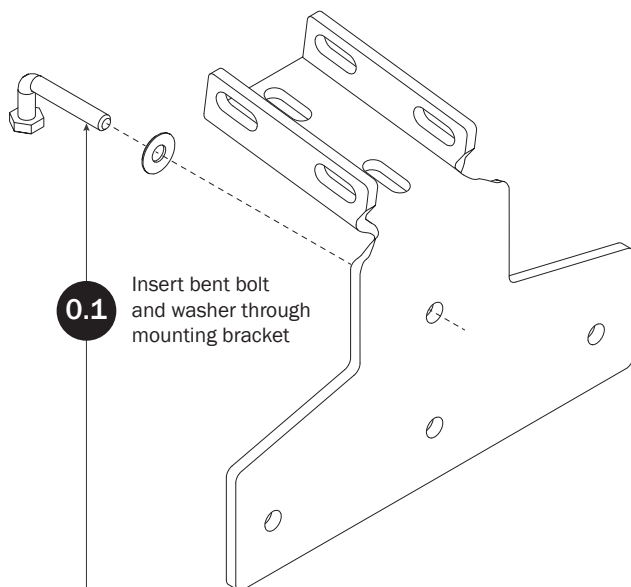
Anti-Seize (2X)



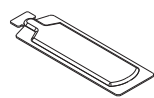
Clamp Down Ball (2X)



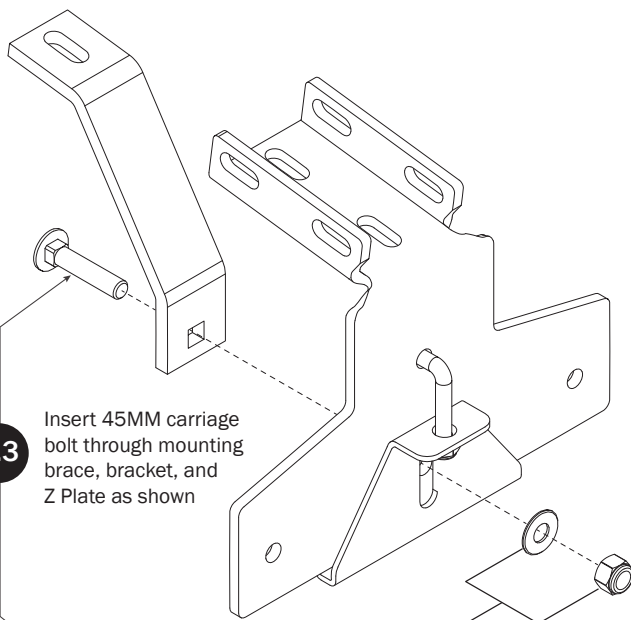
Clamp Down Handle Sleeve (4X)

**MOUNTING BRACKETS—HORIZONTAL
BRACKET PRE-ASSEMBLY**

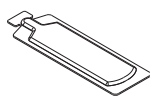
0.1 Insert bent bolt and washer through mounting bracket



Anti-Seize
Must apply Anti-Seize Compound and torque to specified value.



0.3 Insert 45MM carriage bolt through mounting brace, bracket, and Z Plate as shown



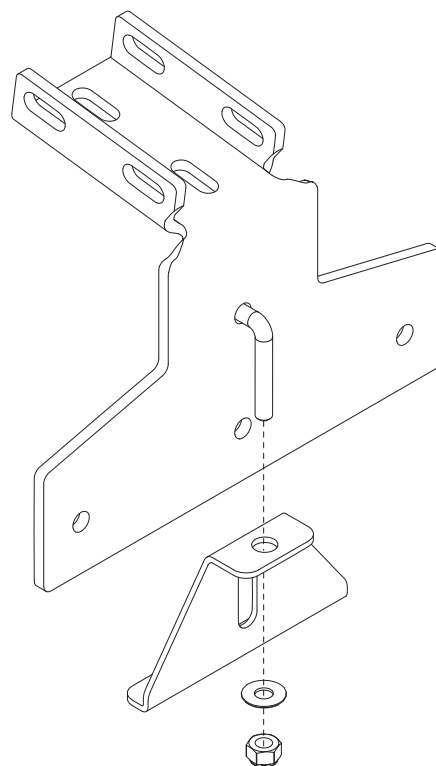
Anti-Seize
Must apply Anti-Seize Compound and torque to specified value.

0.4

Secure mounting assembly with washer and nut. Do not tighten until installed on vehicle roof

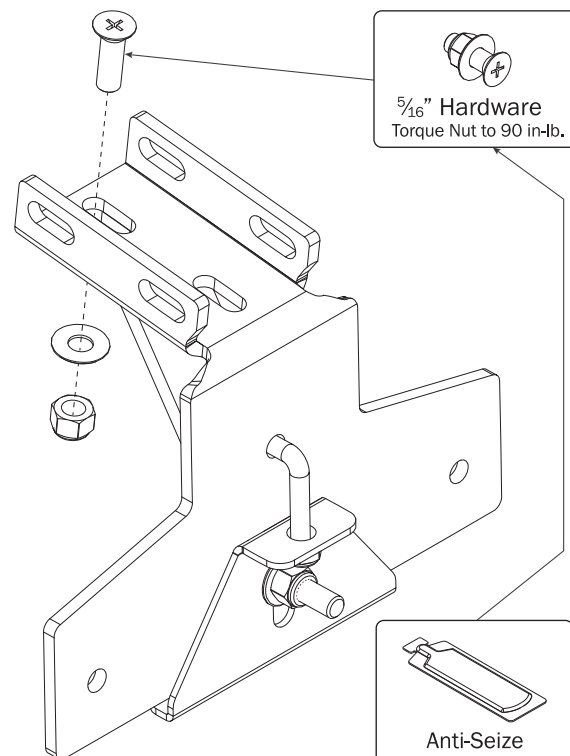
0.2

Assemble the Z Plate and secure with washer and nut. Do not tighten until installed on vehicle roof

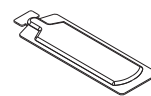


0.5

Repeat Steps 0.1–0.5 to assemble the remaining Horizontal Mounting Brackets

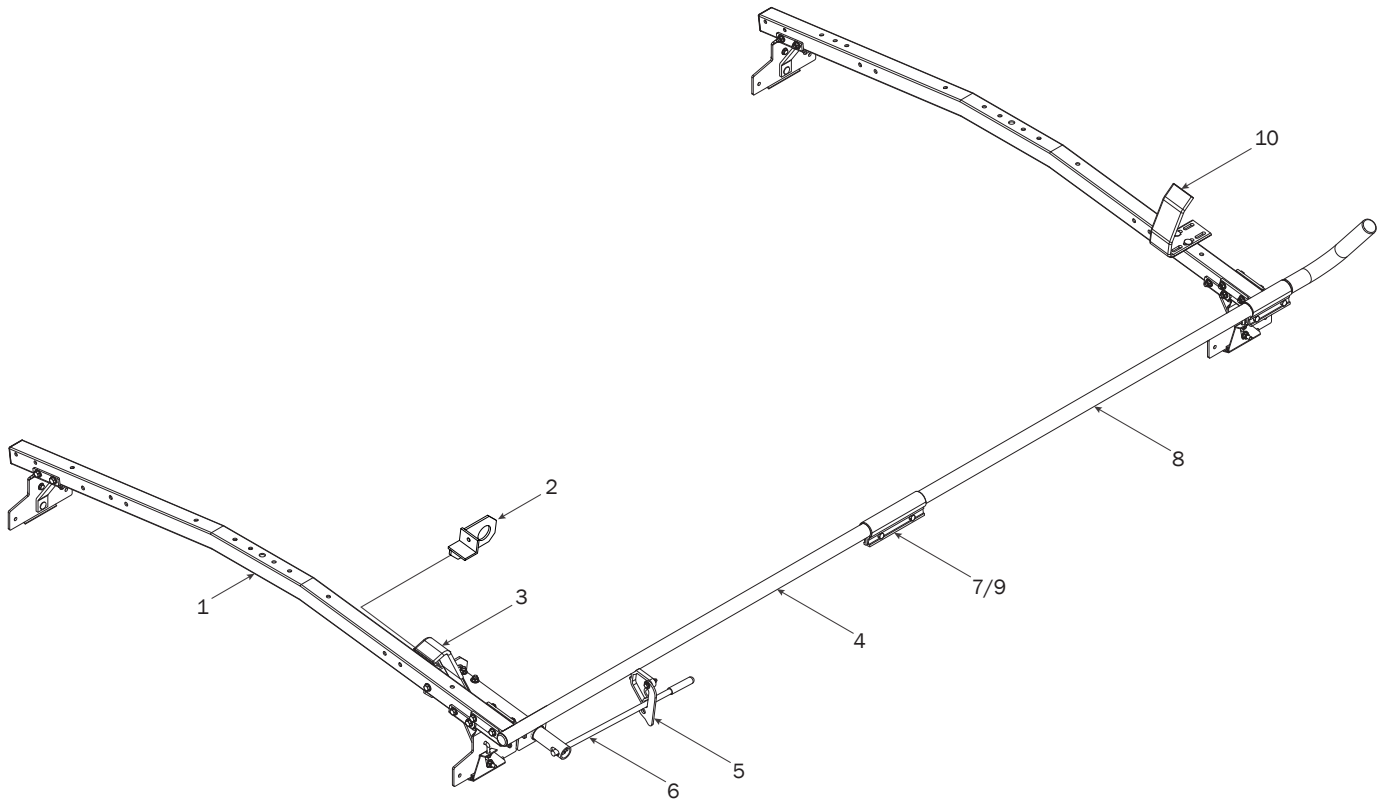


5/16" Hardware
Torque Nut to 90 in-lb.



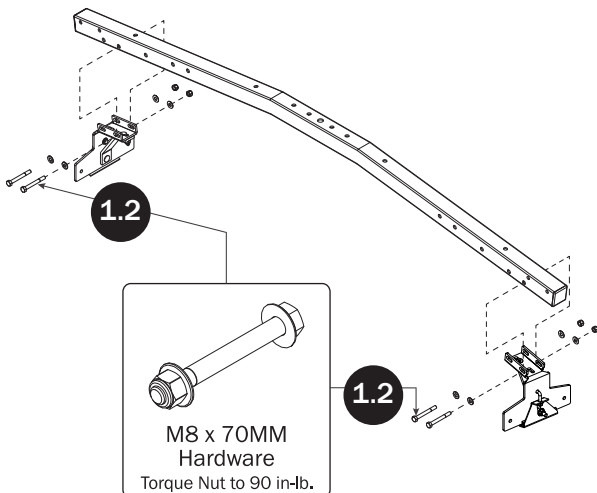
Anti-Seize
Must apply Anti-Seize Compound and torque to specified value.

RIGHT CLAMP DOWN ASSEMBLY SEQUENCE



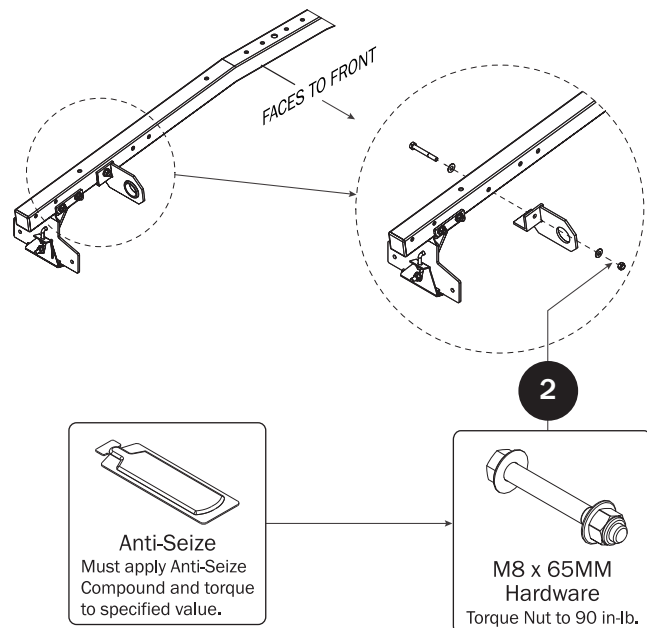
CROSSBARS

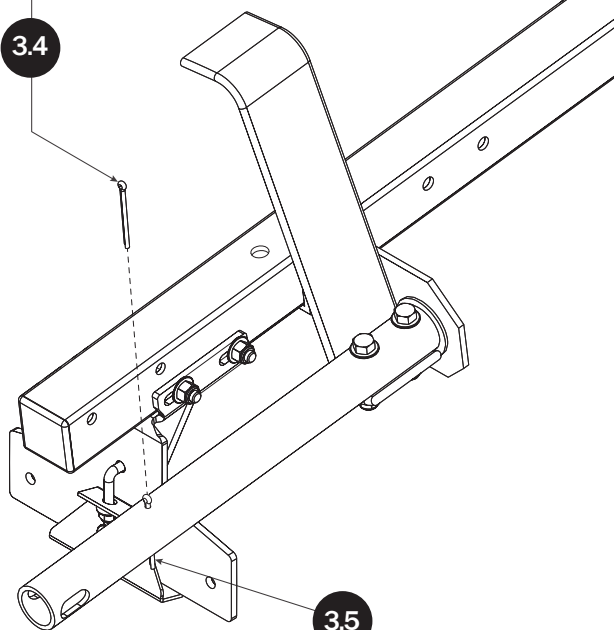
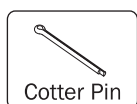
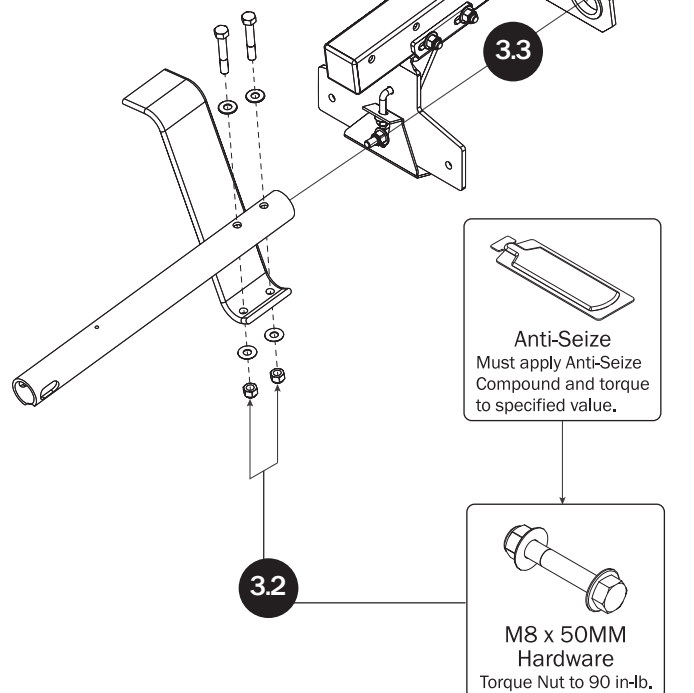
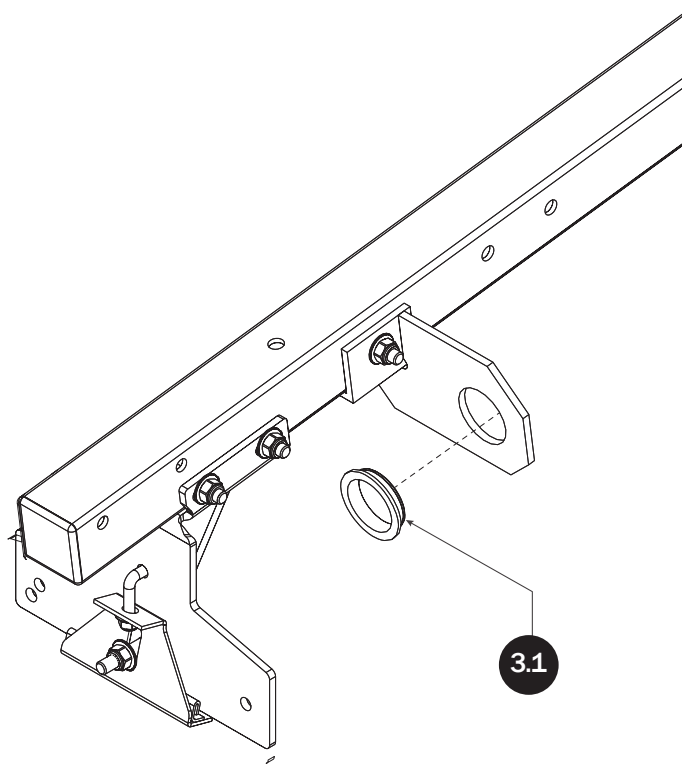
- 1.1** Apply Anti-Seize compound to Mounting Bracket bolts



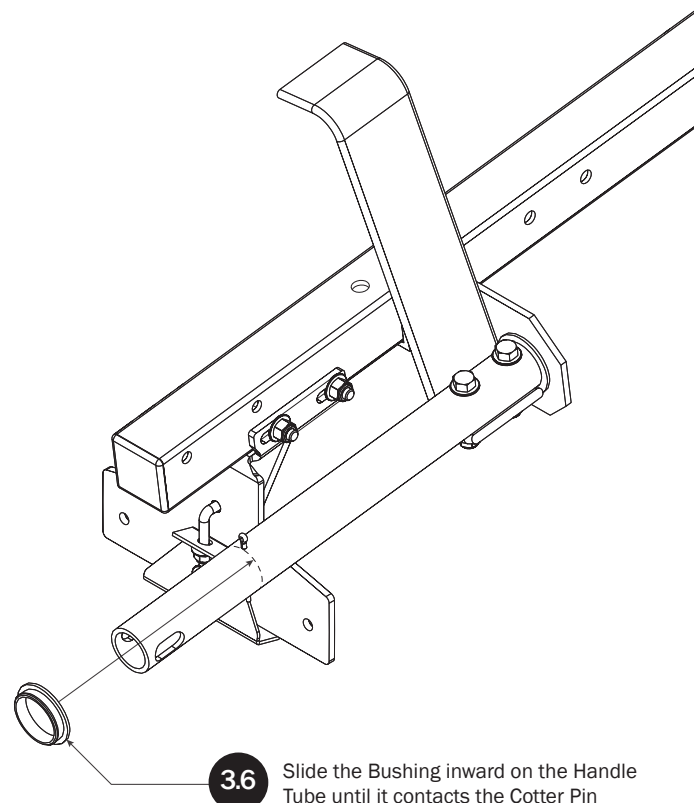
- 1.3** Repeat Steps 1.2 to install the remaining Mounting Brackets onto the front Crossbar

CLAMP DOWN HANDLE TUBE BRACKET



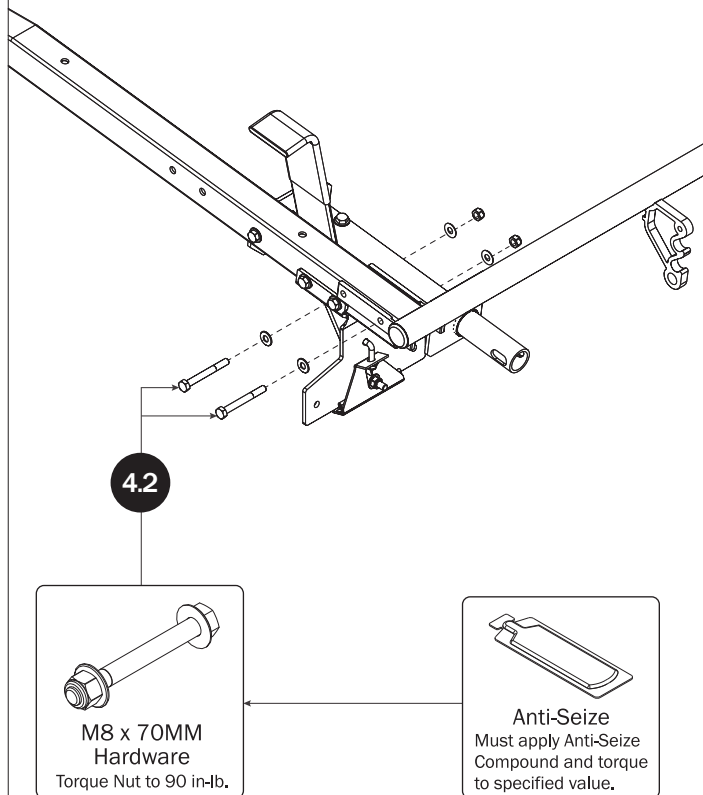
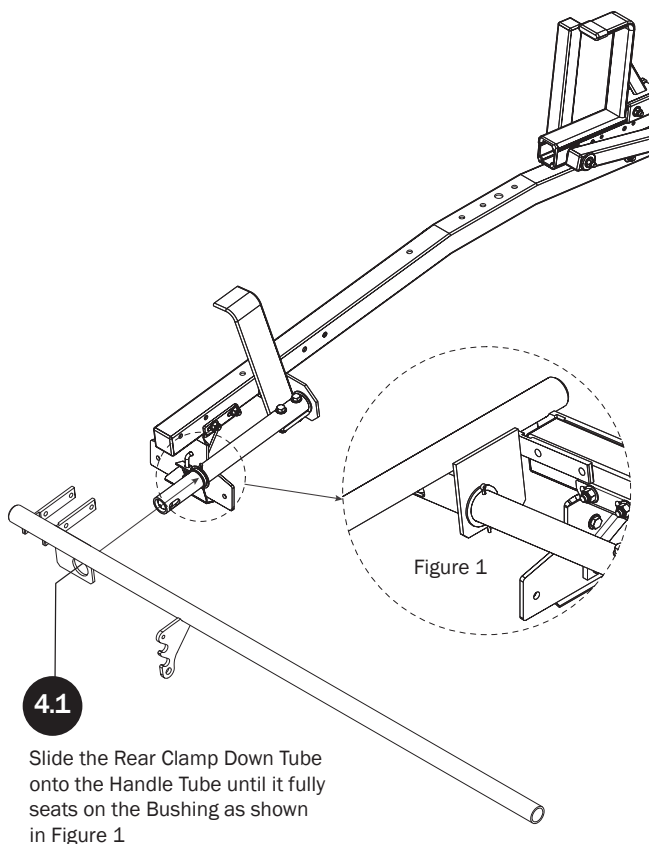
CLAMP DOWN HANDLE TUBE

Bend the Cotter Pin to secure it in the Handle Tube as shown

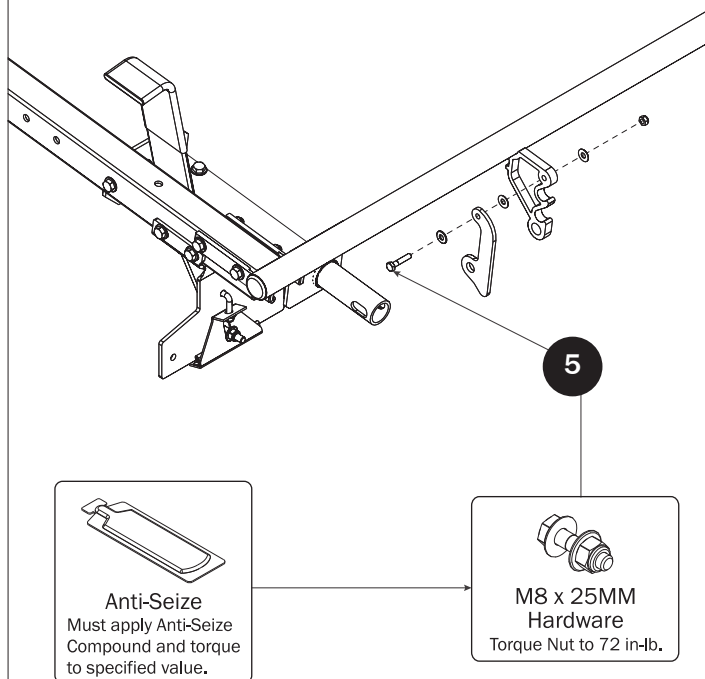


Slide the Bushing inward on the Handle Tube until it contacts the Cotter Pin

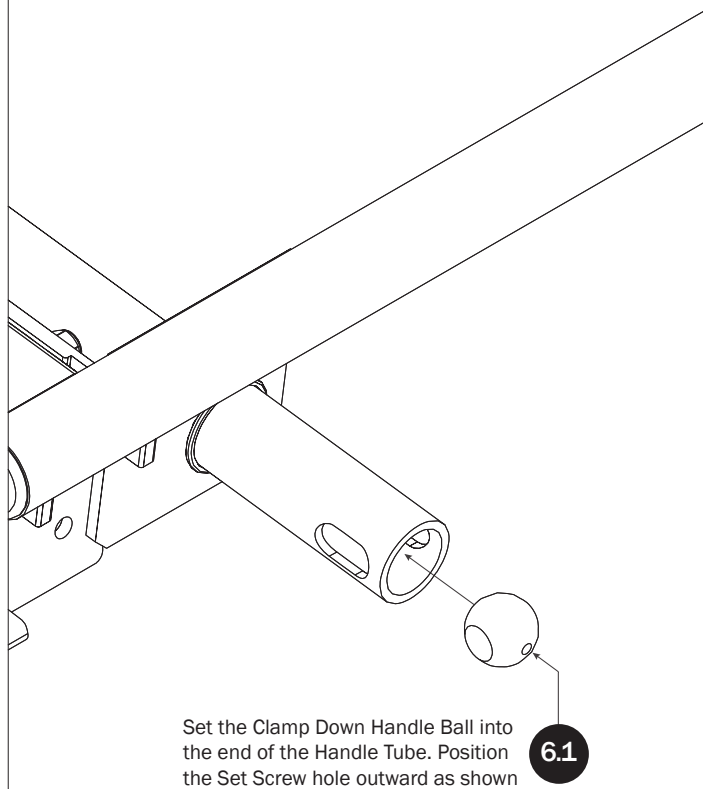
REAR CLAMP DOWN TUBE

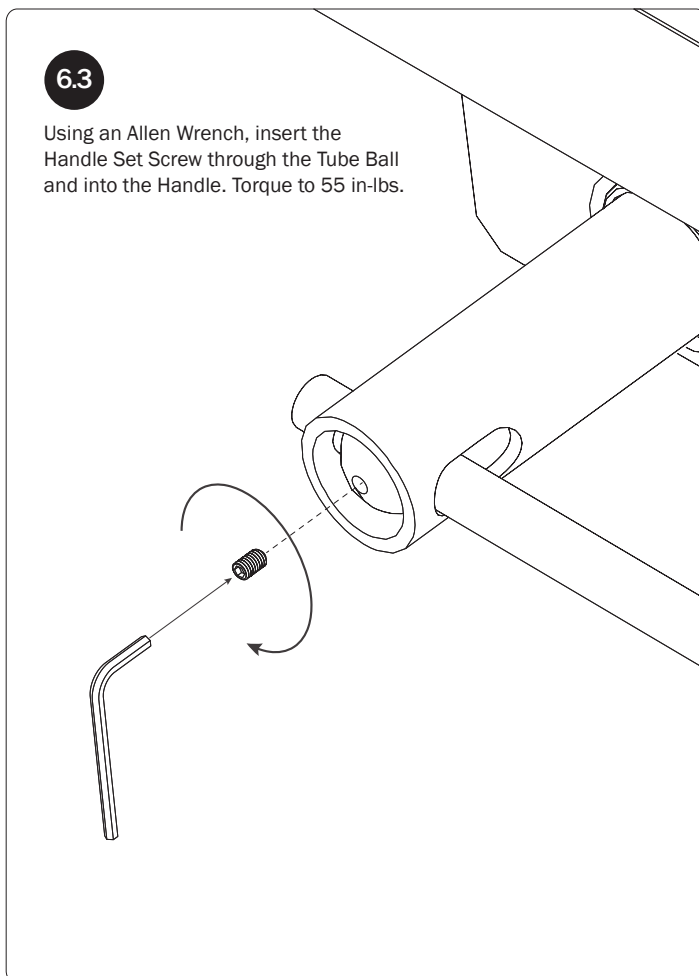
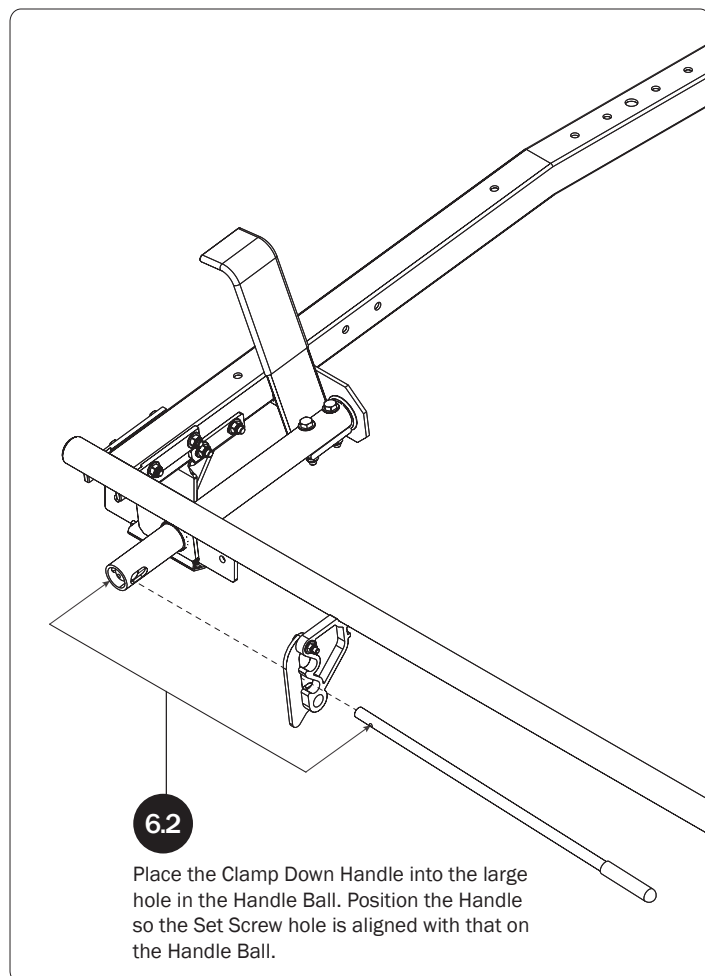


HANDLE LATCH

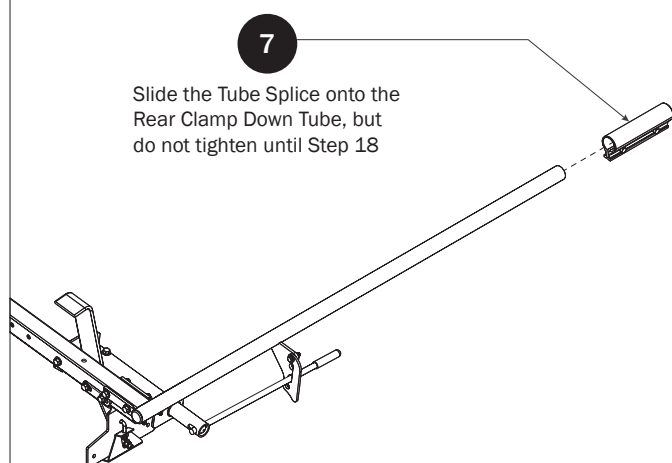


CLAMP DOWN HANDLE

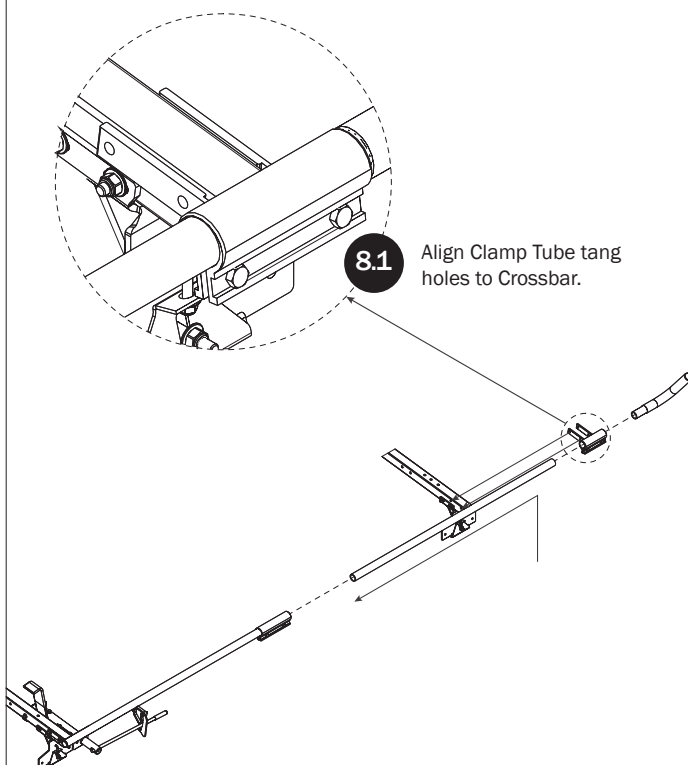


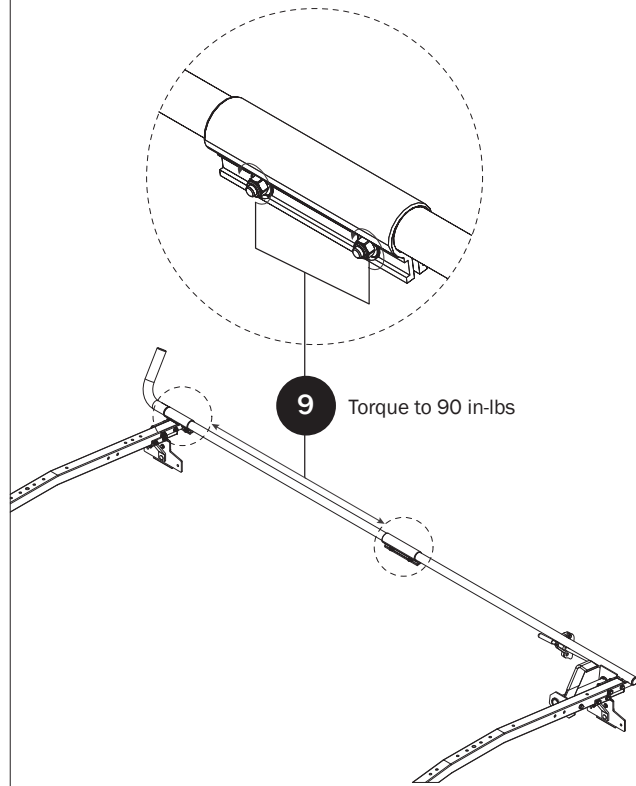
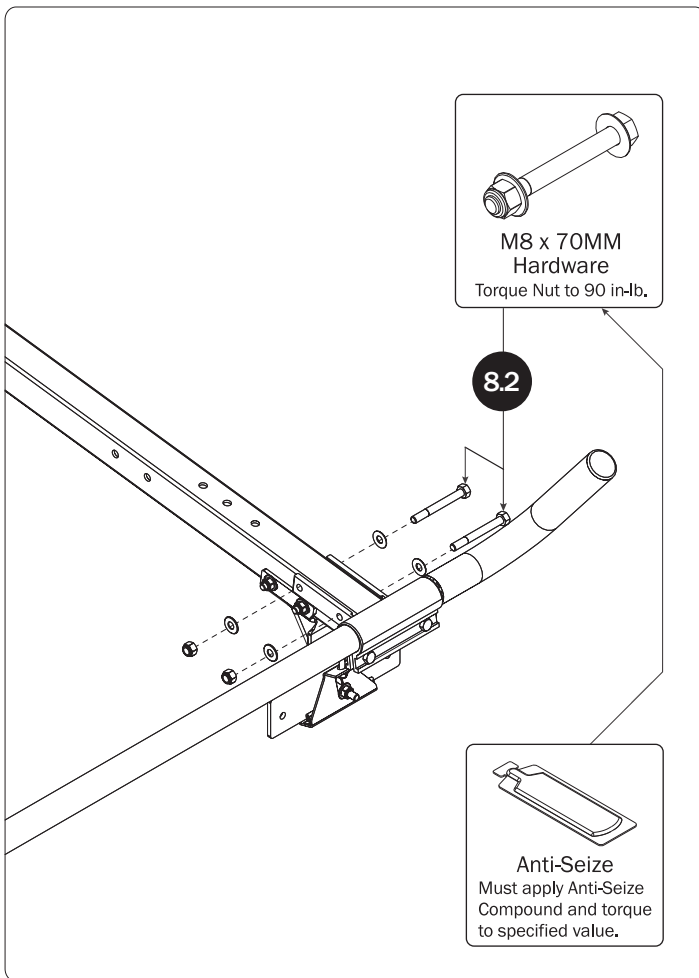
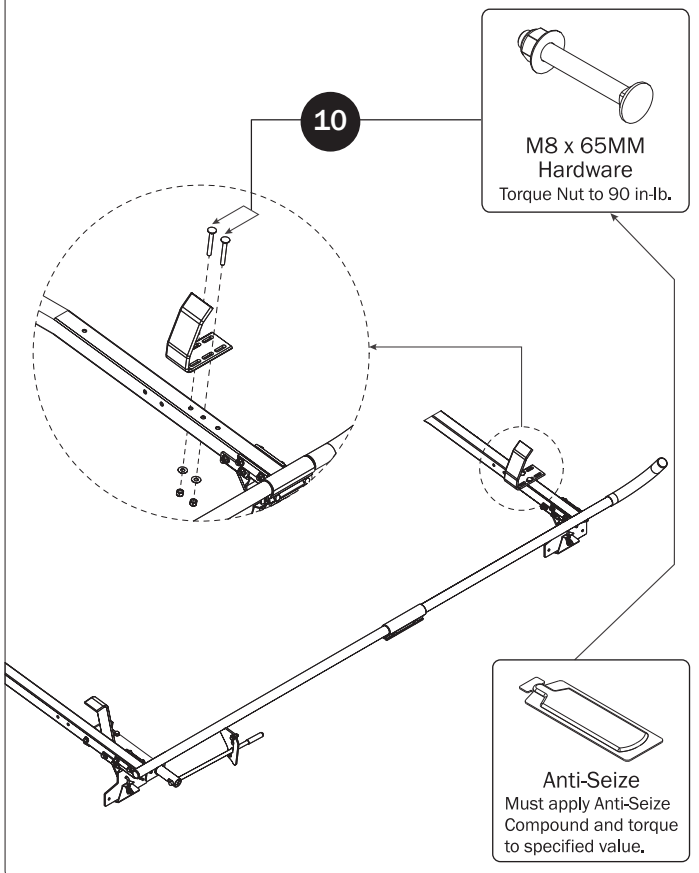


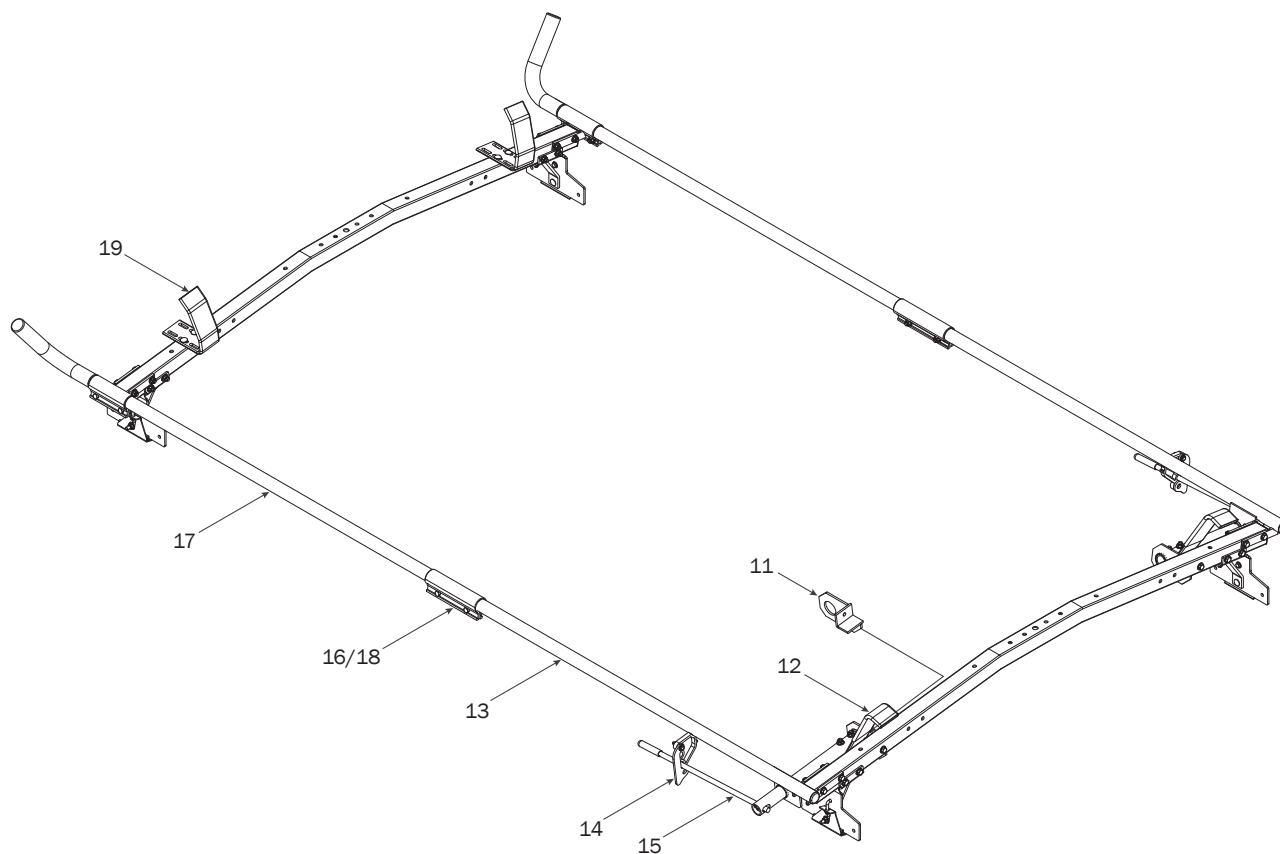
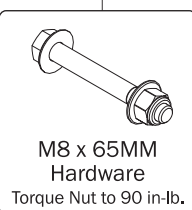
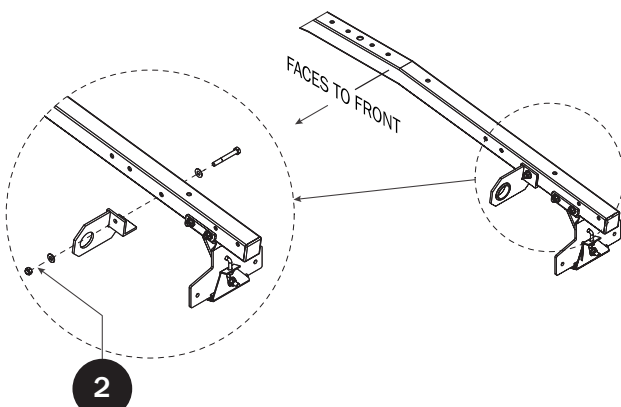
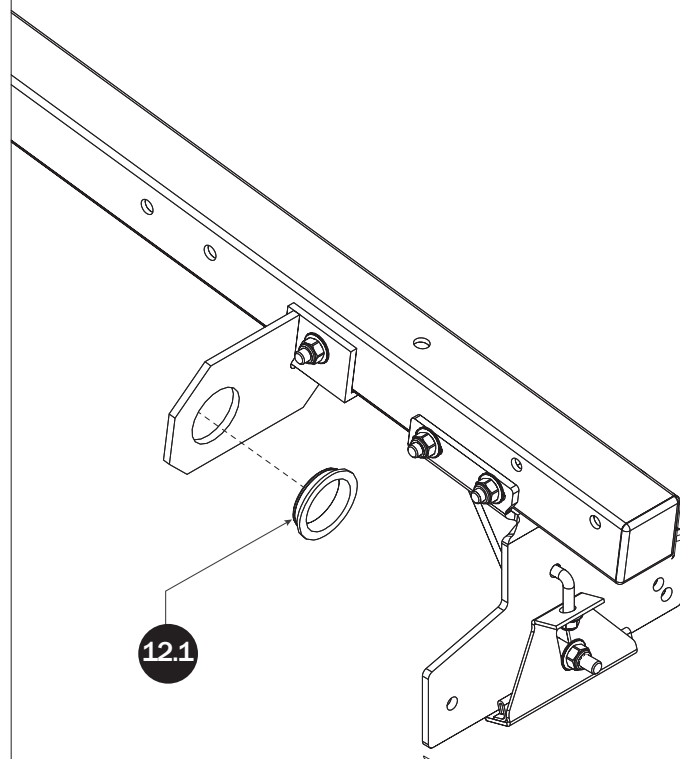
CLAMP DOWN TUBE SPLICE

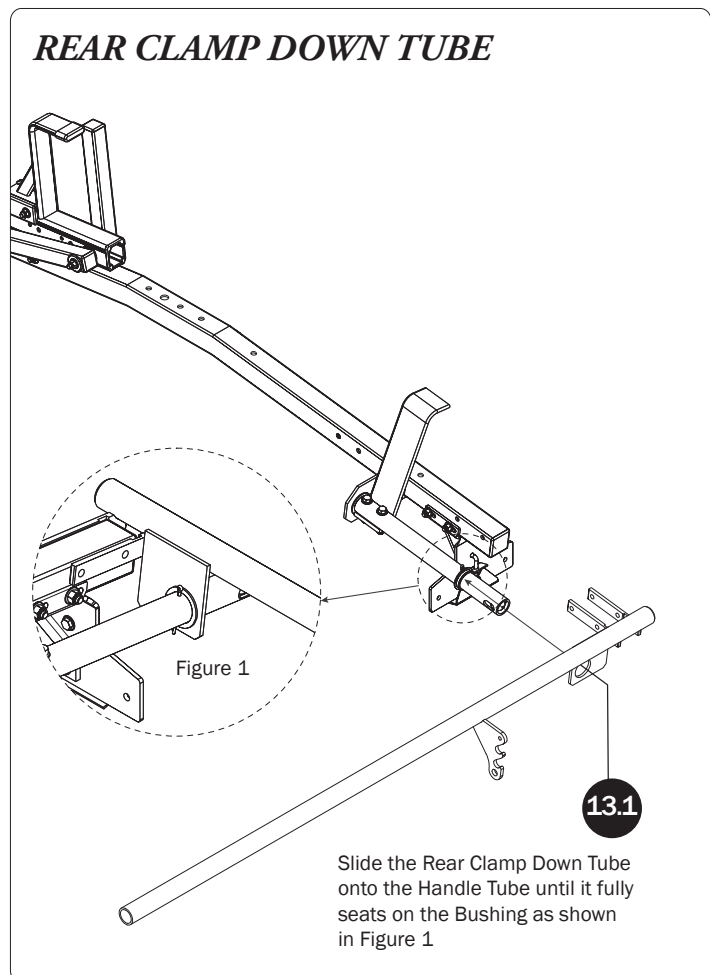
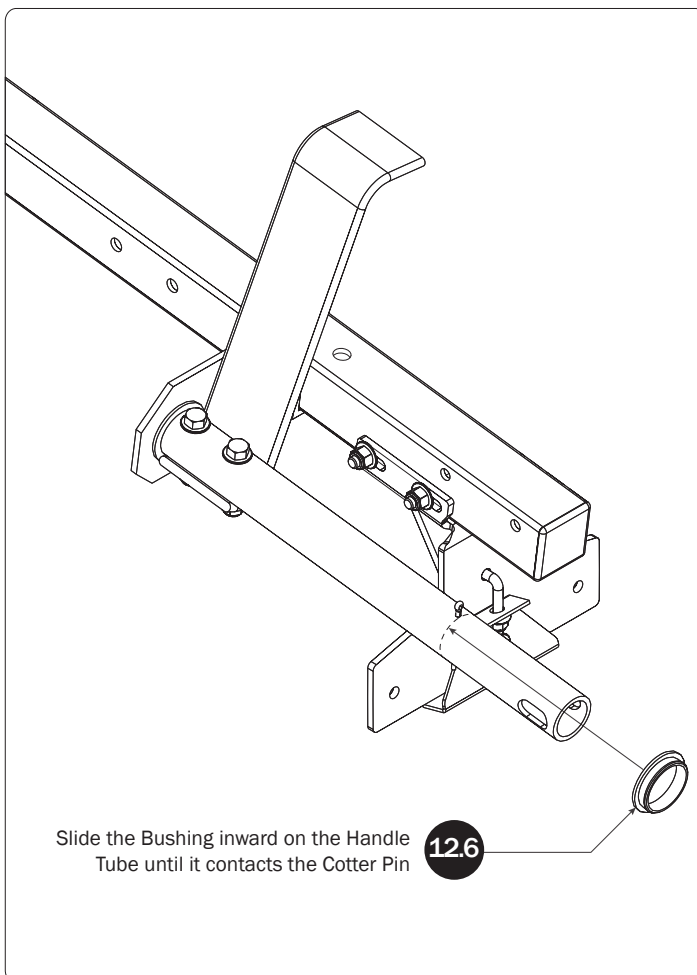
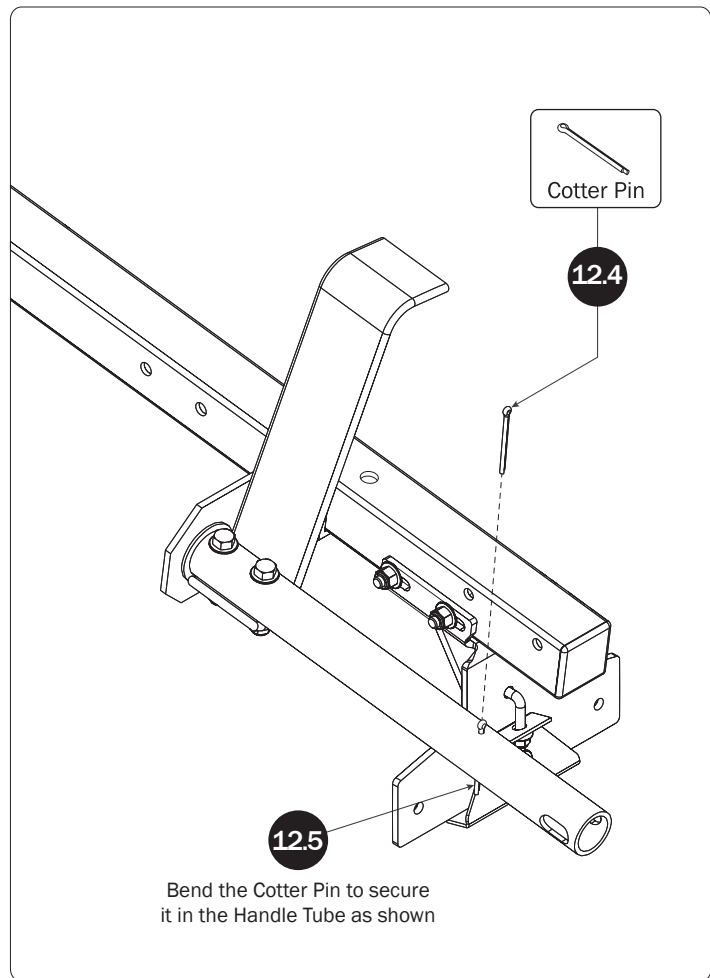
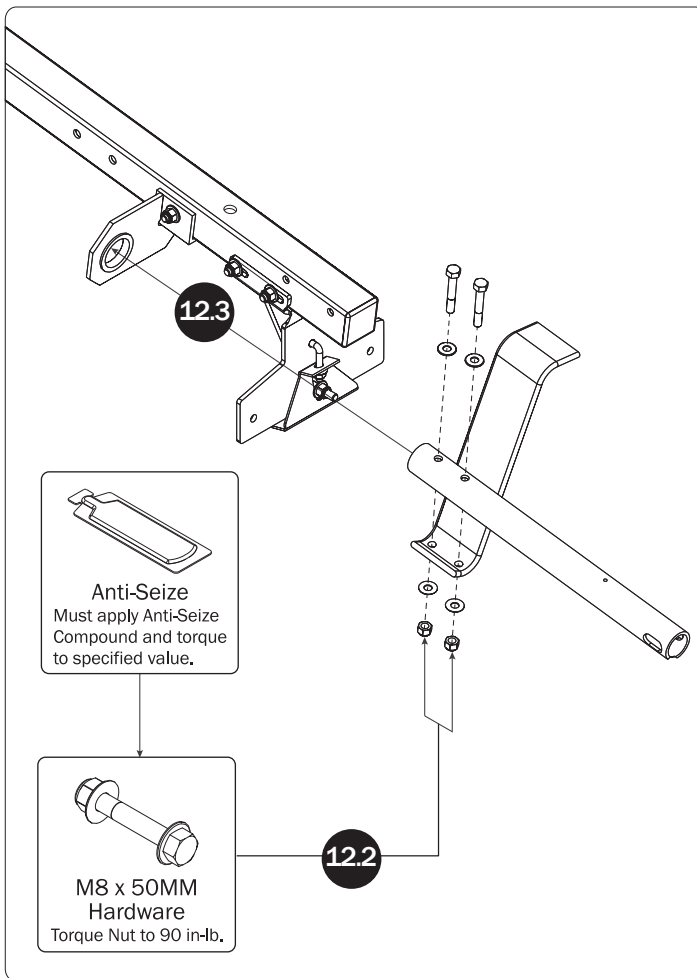


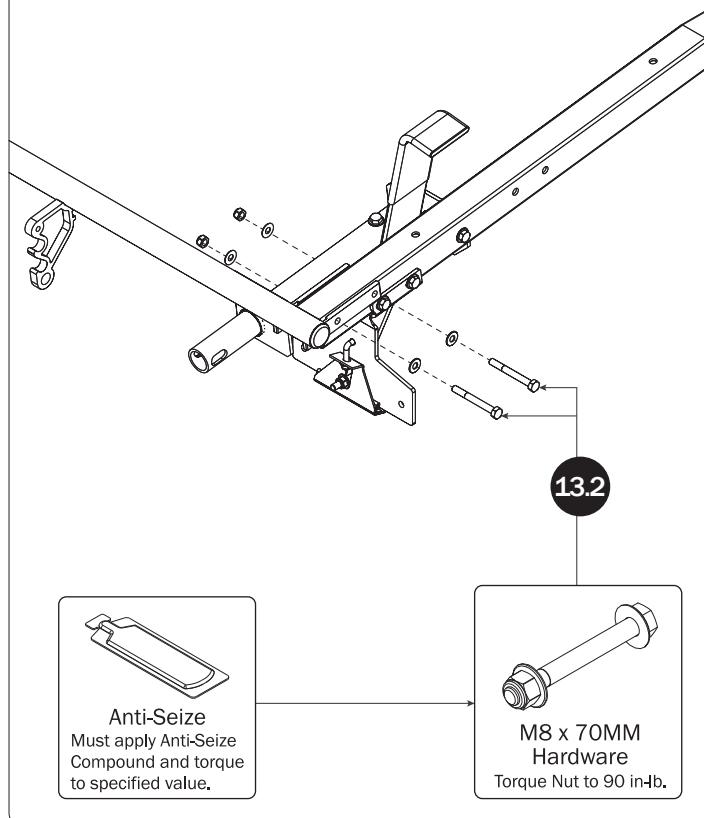
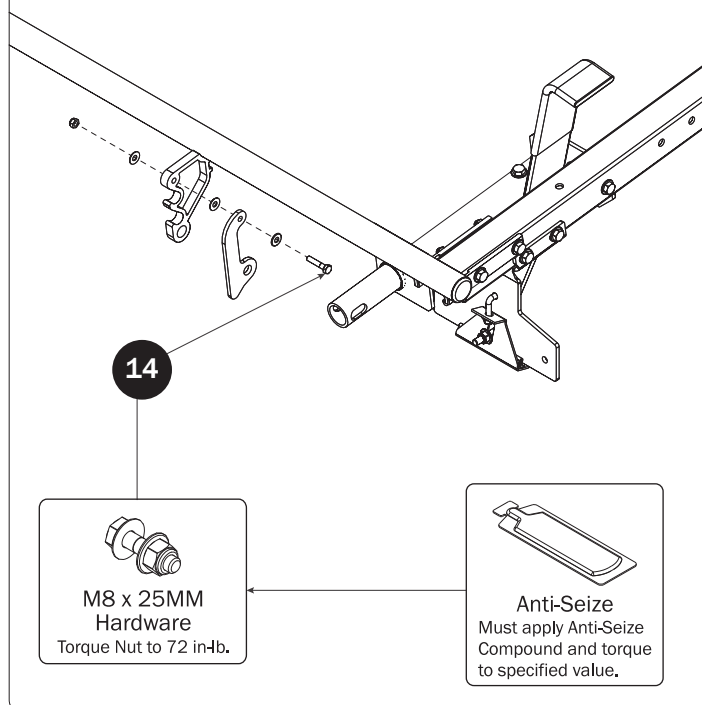
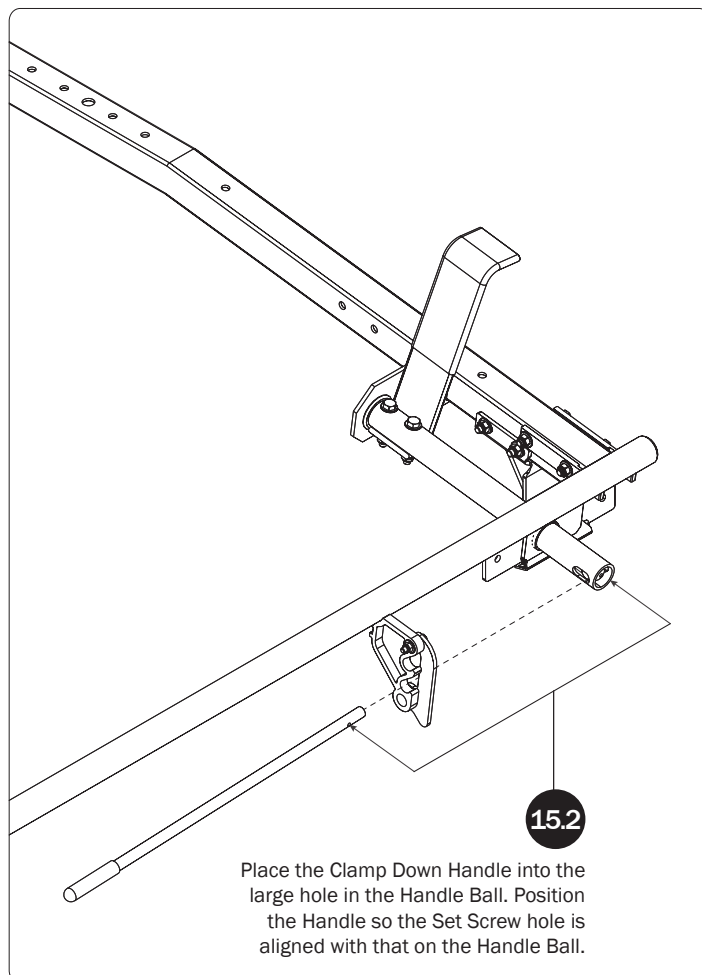
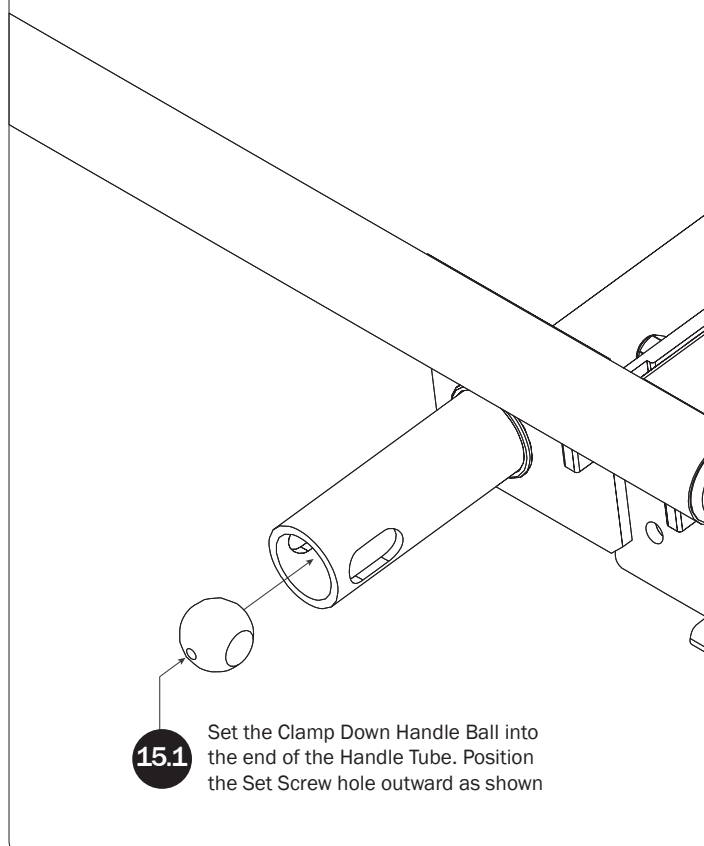
FRONT CLAMP DOWN TUBE



CLAMP DOWN TUBE ADJUSTMENTS**FRONT LADDER HOOK**

LEFT CLAMP DOWN ASSEMBLY SEQUENCE**CLAMP DOWN HANDLE
TUBE BRACKET****CLAMP DOWN HANDLE TUBE**



**HANDLE LATCH****CLAMP DOWN HANDLE**

15.3

Using an Allen Wrench, insert the Handle Set Screw through the Tube Ball and into the Handle. Torque to 55 in-lbs.

CLAMP DOWN TUBE SPLICE

16

Slide the Tube Splice onto the Rear Clamp Down Tube, but do not tighten until Step 18

FRONT CLAMP DOWN TUBE

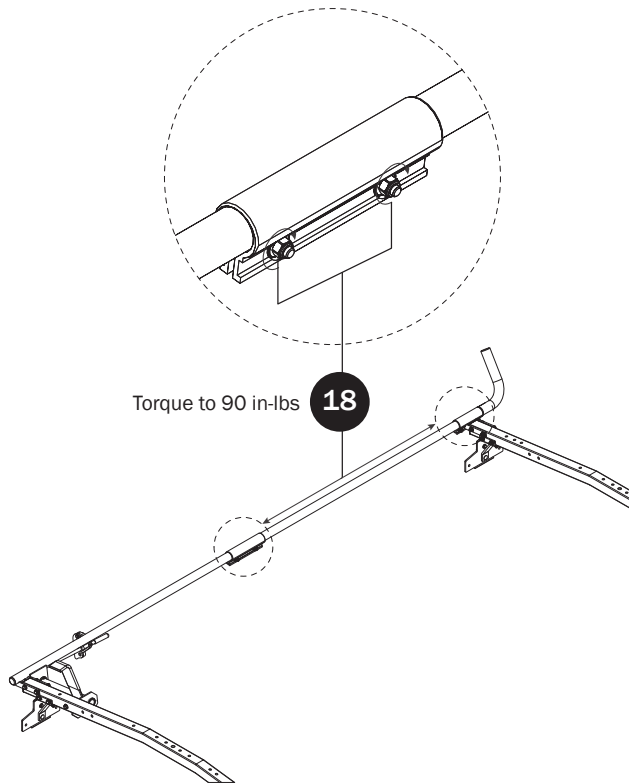
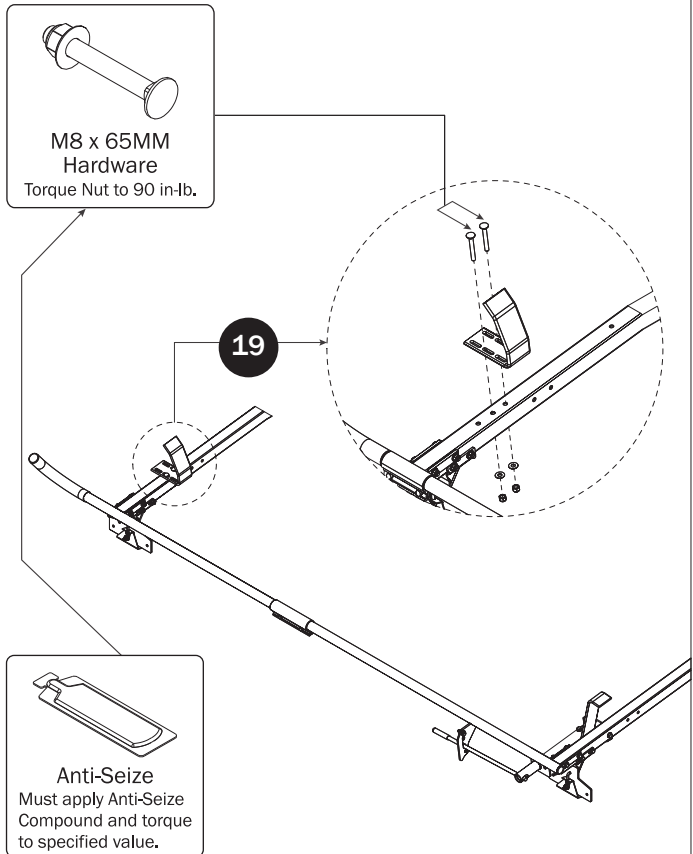
Align Clamp Tube tang holes to Crossbar.

17.1

M8 x 70MM
Hardware
Torque Nut to 90 in-lb.

17.2

Anti-Seize
Must apply Anti-Seize
Compound and torque
to specified value.

CLAMP DOWN TUBE ADJUSTMENTS**FRONT LADDER HOOK**

Page Intentionally Left Blank

