

ErgoRack

For Enclosed Utility

PRIME DESIGN™

A Safe Fleet Brand



Maximize the safety and carrying capacity of your Enclosed Utility with an ErgoRack.



Easy to use

Deploys with only 2 fingers.



Improve productivity

Deploy or stow in less than 20 seconds.



Enhance safety

Eliminates slip and fall hazards from climbing on bumper or tire.



Full control

Control ladder deployment with adjustable hydraulic cylinder



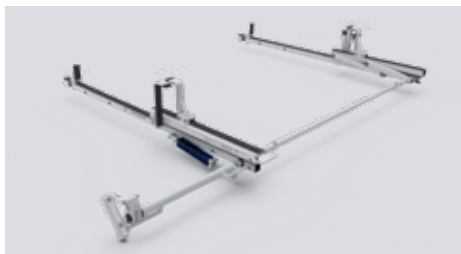
Driving Safety Forward™

ErgoRack

For Enclosed Utility

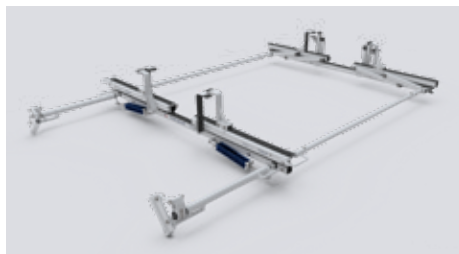
PRIME DESIGN™

A Safe Fleet Brand



HBR-E-UM3-84-M

Single Horizontal Rotation with Slide



HRR-E-UM3-84-M

Dual Horizontal Rotation with Slides



HRR3-E-UM3-84-M

Dual Horizontal Rotation with Slides and 3rd crossbar

| Model | Body Width | Ground to Roof Height | Street Side Feature | Curb Side Feature | Crossbar Spacing | Rack Weight |
|-----------------|------------|-----------------------|---------------------|-------------------|------------------|-------------|
| HBR-E-UM3-68-M | 64 -70" | 7 ft or Higher | End Stop | Rotation w/ Slide | 5-8' | 89 lbs. |
| HRR-E-UM3-68-M | 64 -70" | 7 ft or Higher | Rotation w/ Slide | Rotation w/ Slide | 5-8' | 144 lbs. |
| HRR3-E-UM3-68-M | 64 -70" | 7 ft or Higher | Rotation w/ Slide | Rotation w/ Slide | 5-8' | 162 lbs. |
| HBR-E-UM3-72-M | 68 -74" | 7 ft or Higher | End Stop | Rotation w/ Slide | 5-8' | 90 lbs. |
| HRR-E-UM3-72-M | 68 -74" | 7 ft or Higher | Rotation w/ Slide | Rotation w/ Slide | 5-8' | 145 lbs. |
| HRR3-E-UM3-72-M | 68 -74" | 7 ft or Higher | Rotation w/ Slide | Rotation w/ Slide | 5-8' | 161 lbs. |
| HBR-E-UM3-78-M | 74 -80" | 7 ft or Higher | End Stop | Rotation w/ Slide | 5-8' | 91 lbs. |
| HRR-E-UM3-78-M | 74 -80" | 7 ft or Higher | Rotation w/ Slide | Rotation w/ Slide | 5-8' | 146 lbs. |
| HRR3-E-UM3-78-M | 74 -80" | 7 ft or Higher | Rotation w/ Slide | Rotation w/ Slide | 5-8' | 164 lbs. |
| HBR-E-UM3-84-M | 80 -86" | 7 ft or Higher | End Stop | Rotation w/ Slide | 5-8' | 92 lbs. |
| HRR-E-UM3-84-M | 80 -86" | 7 ft or Higher | Rotation w/ Slide | Rotation w/ Slide | 5-8' | 147 lbs. |
| HRR3-E-UM3-84-M | 80 -86" | 7 ft or Higher | Rotation w/ Slide | Rotation w/ Slide | 5-8' | 162 lbs. |
| HBR-E-UM3-90-M | 86 -92" | 7 ft or Higher | End Stop | Rotation w/ Slide | 5-8' | 93 lbs. |
| HRR-E-UM3-90-M | 86 -92" | 7 ft or Higher | Rotation w/ Slide | Rotation w/ Slide | 5-8' | 148 lbs. |
| HRR3-E-UM3-90-M | 86 -92" | 7 ft or Higher | Rotation w/ Slide | Rotation w/ Slide | 5-8' | 164 lbs. |
| HBR-E-UM3-99-M | 96 -102" | 7 ft or Higher | End Stop | Rotation w/ Slide | 5-8' | 94 lbs. |
| HRR-E-UM3-99-M | 96 -102" | 7 ft or Higher | Rotation w/ Slide | Rotation w/ Slide | 5-8' | 149 lbs. |
| HRR3-E-UM3-99-M | 96 -102" | 7 ft or Higher | Rotation w/ Slide | Rotation w/ Slide | 5-8' | 168 lbs. |

Notes:

For rotation style ladder racks, crossbars can be spaced at 1-foot increments from 5 feet up to 8 feet.

Review the crossbar spacing and ladder size guide below.

For step ladders longer than 10 feet, an optional extended rear upper with slide is recommended.[†]

Check the vehicle manufacturer's recommendation for the roof capacity weight limit.

Crossbar Spacing and Ladder Size Guide

| Crossbar Spacing | Step Ladder Size | Extension Ladder Size |
|------------------|------------------|-----------------------|
| 4 ft Spacing | 6 – 8 ft. | 16 – 20 ft. |
| 5 ft Spacing | 8 – 10 ft. | 16 – 24 ft. |
| 6 ft Spacing | 8 – 12 ft.† | 16 – 28 ft. |
| 7 ft Spacing** | 10 – 12 ft.† | 20 – 32 ft. |
| 8 ft Spacing** | 10 – 12 ft.† | 20 – 36 ft. |

†12 ft. step ladders may require an extended upper add-on component.



ML-7.2-4065 / Rev B / 7-27-2020

Copyright ©2020 Safe Fleet and its subsidiaries. All rights reserved. No part of this publication may be reproduced by any means without written permission from Safe Fleet. The information in this publication is believed to be accurate. However, Safe Fleet does not make any representation or warranty to that effect and does not assume responsibility for any consequences resulting from use of such information. Revisions or new editions of the publication may be issued (or not issued) in our discretion to incorporate such changes.

1.877.463.7225
safefleet.net

