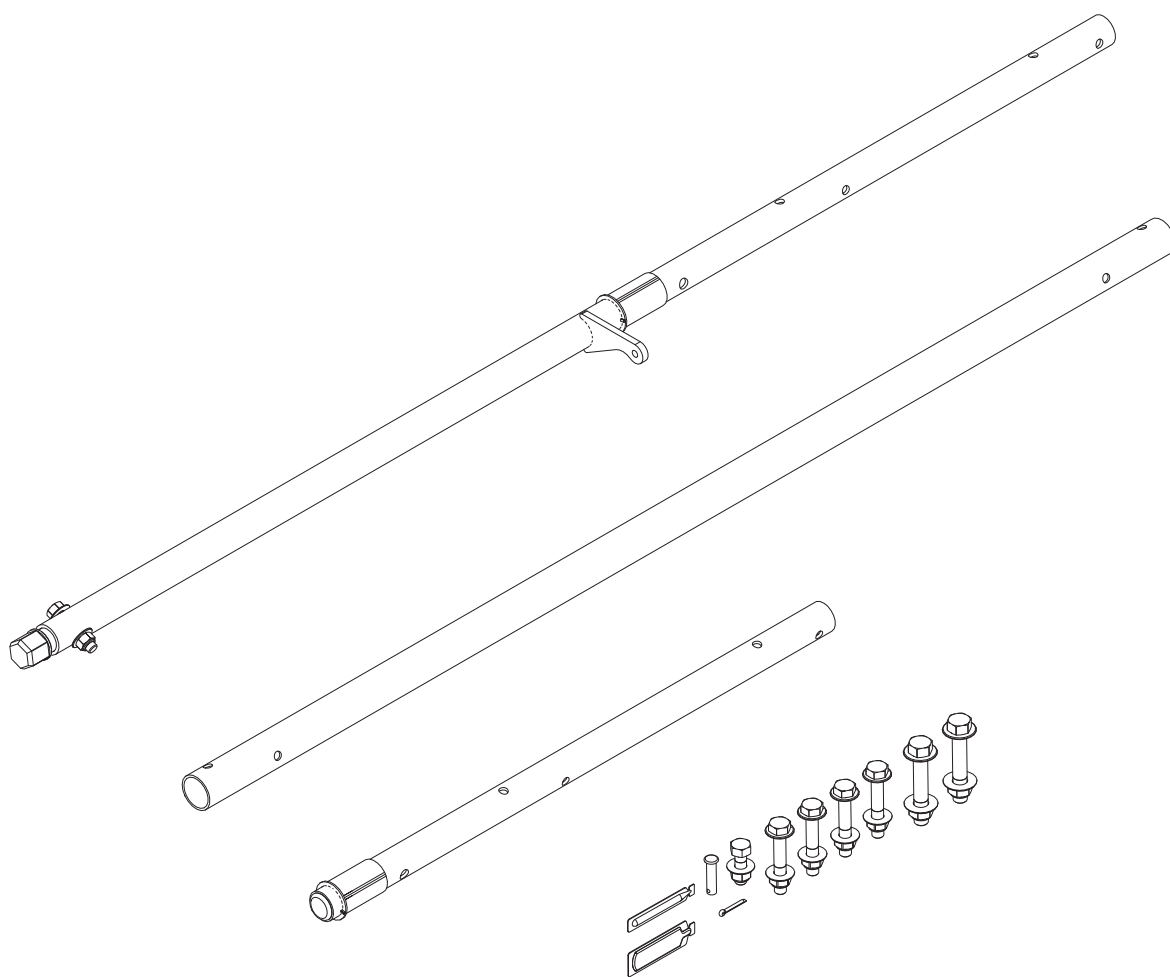


PRIME DESIGN™

A Safe Fleet Brand

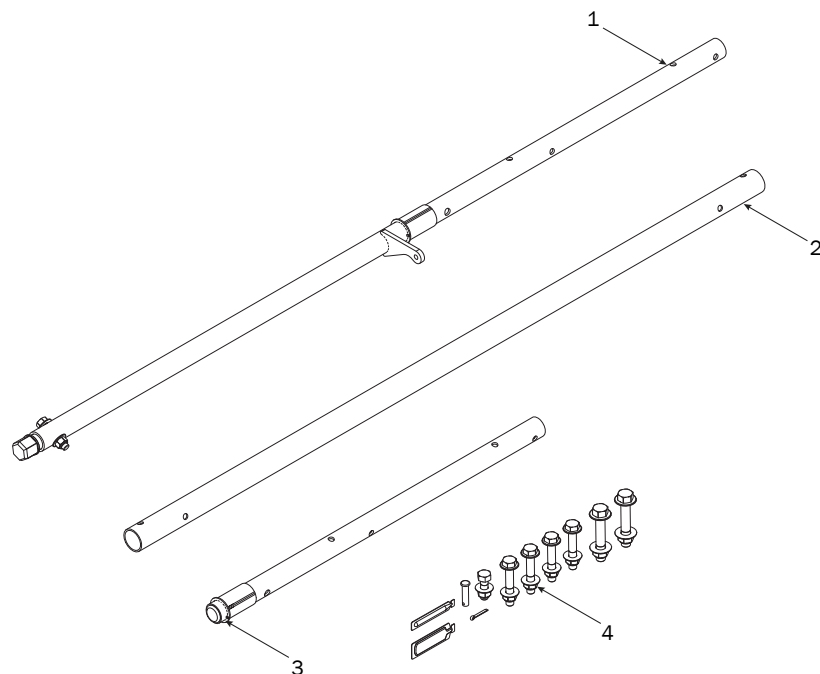


PRIME DESIGN, A SAFE FLEET BRAND

Address: 580 Opperman Drive, Eagan, MN 55123 • Toll Free: 1.8.PRIME.RACK

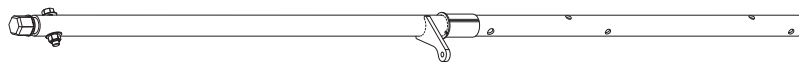
Fax: 651-552-1799 • Email: info@primedesign.net • Website: www.primedesign.net

FEA0010



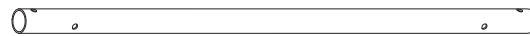
1—Drive Shaft (Qty 1)

Rear, Ratchet Handle



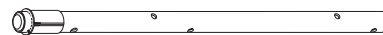
2—Connecting Bar (Qty 1)

36.00"

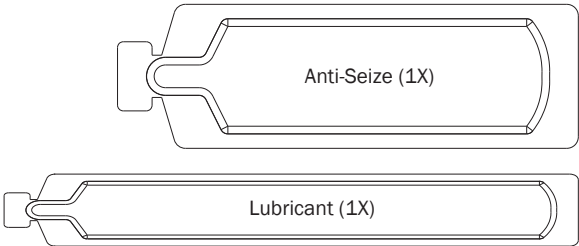
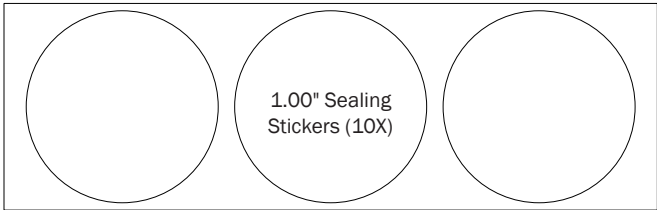
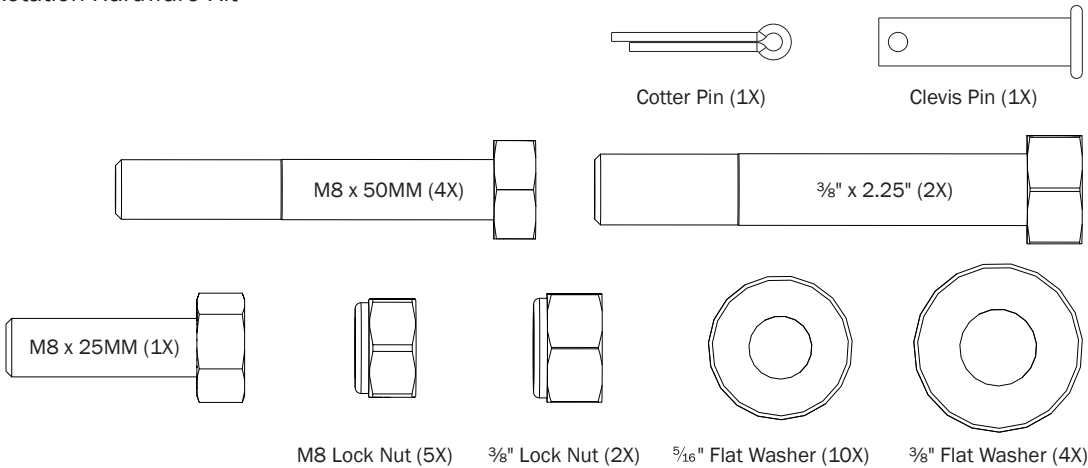


3—Front Drive Shaft (Qty 1)

B Version, 23.75"



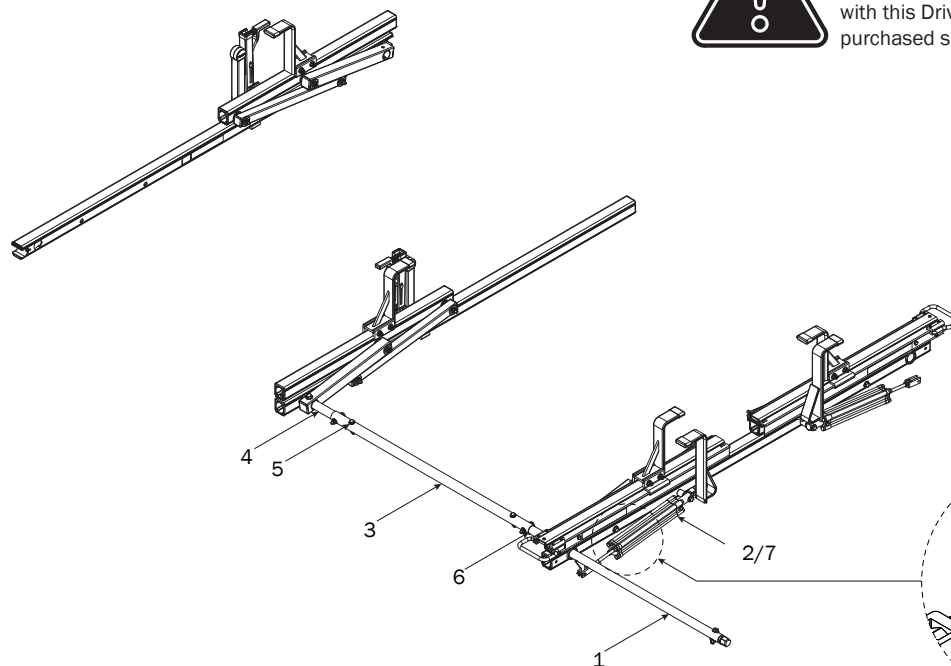
4—HKT-8163..... (Qty 1)
Modular High Roof Rotation Hardware Kit



DRIVE SHAFT ASSEMBLY SEQUENCE



NOTE: Crossbars and LH Rotation feature are shown for illustrative purposes only. Crossbars and Rotations are not included with this Drive Shaft feature, and must be purchased separately.

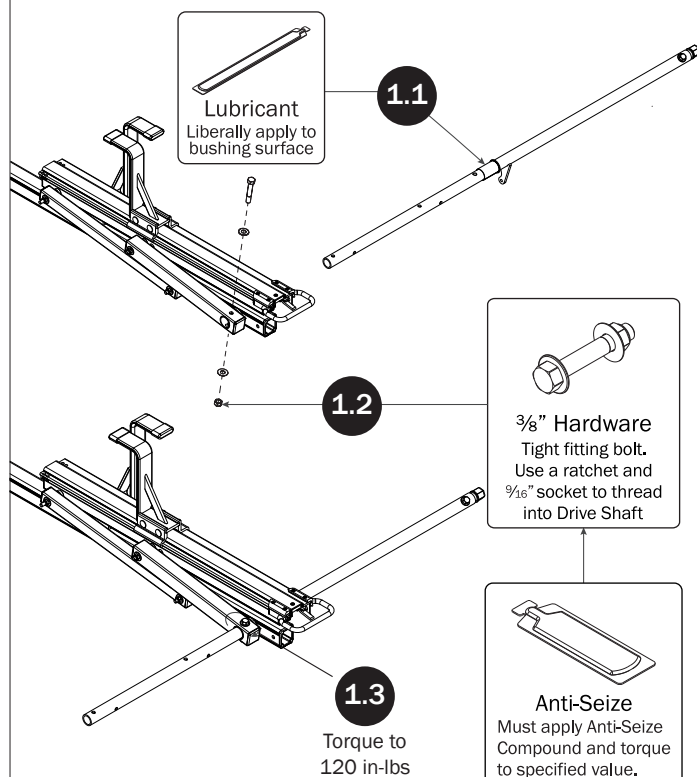


NOTE: Flow Control Screw faces toward vehicle rear

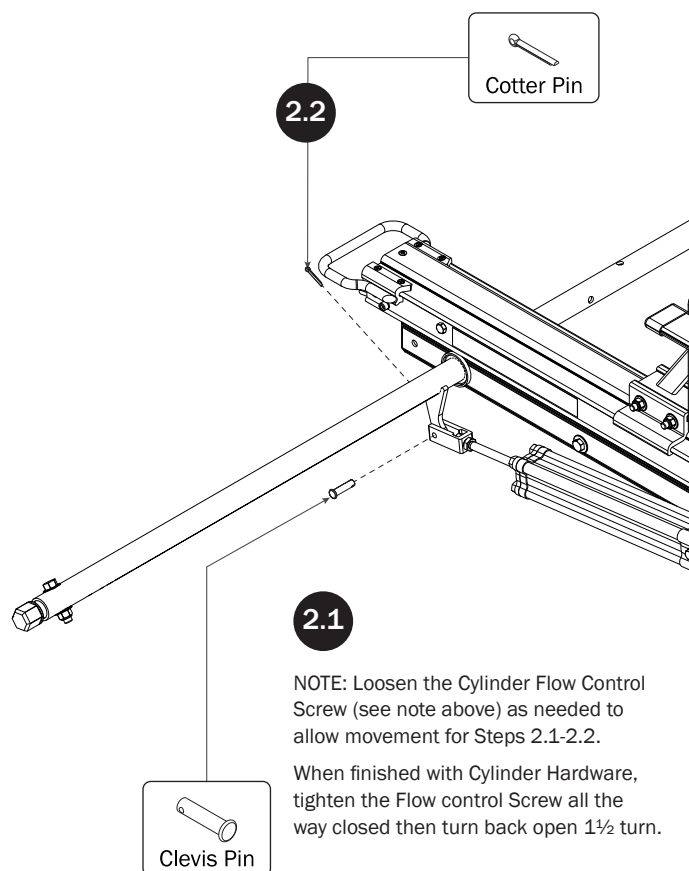
***NOTE:** Instructions are shown with the Left Side Drive Shaft Assembly Sequence. The Right Side Drive Shaft Assembly Sequence is identical, and all steps are the same.

REAR DRIVE SHAFT

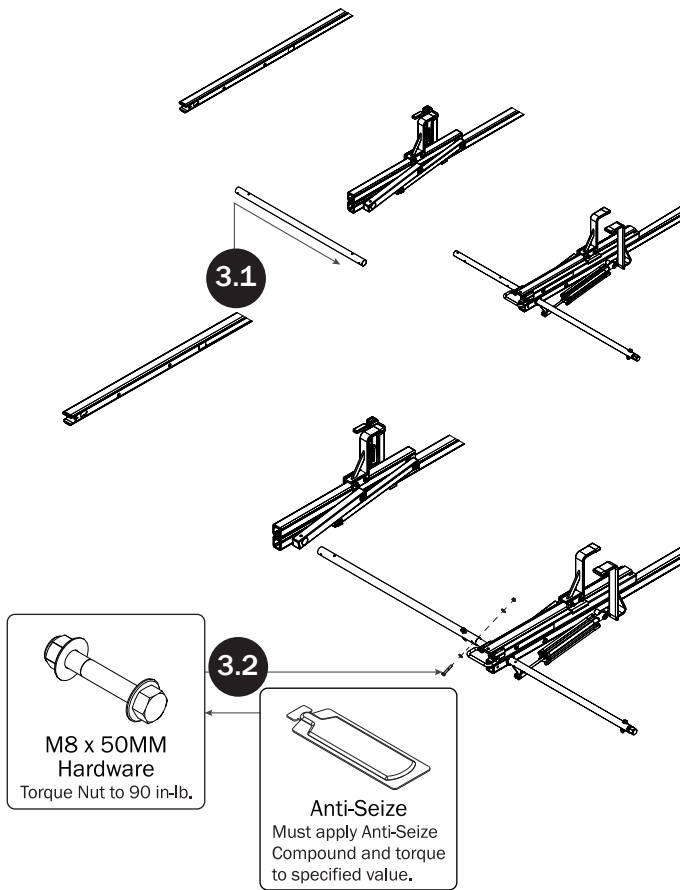
NOTE: For instructional clarity, the FBM Mounting System will not be shown for the remainder of this Assembly Manual.



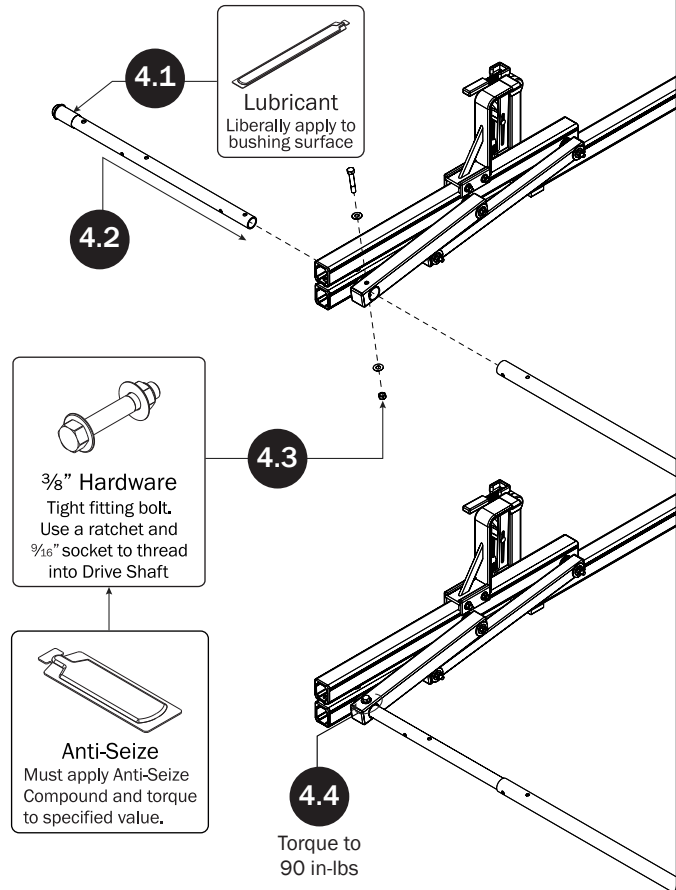
CYLINDER HARDWARE



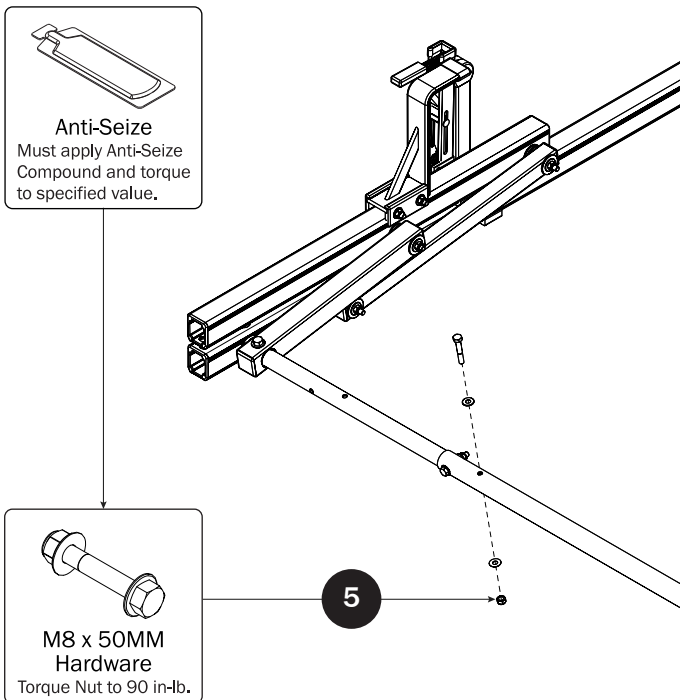
CONNECTING BAR



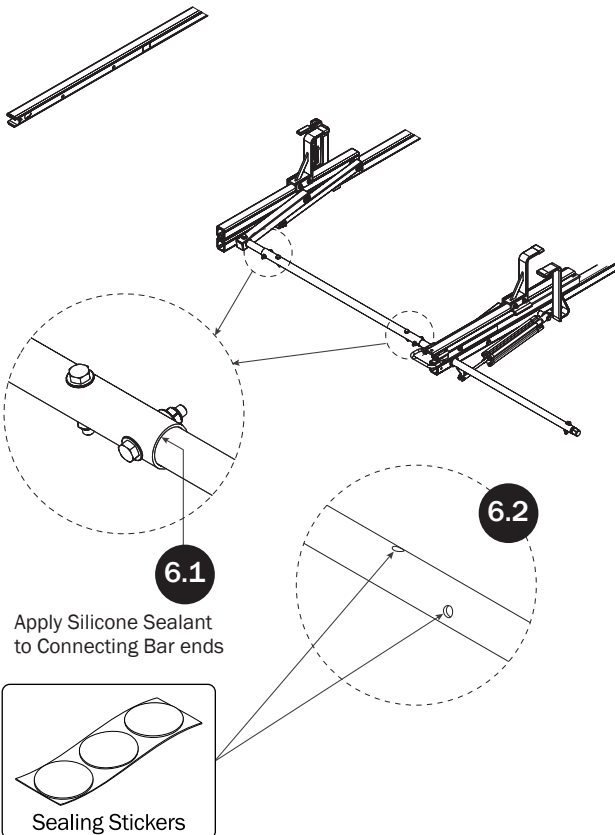
FRONT DRIVE SHAFT

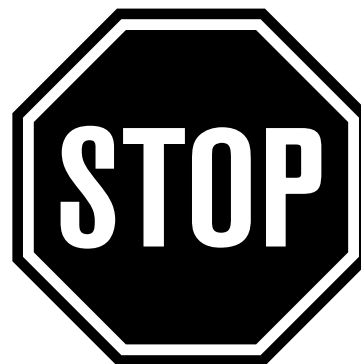
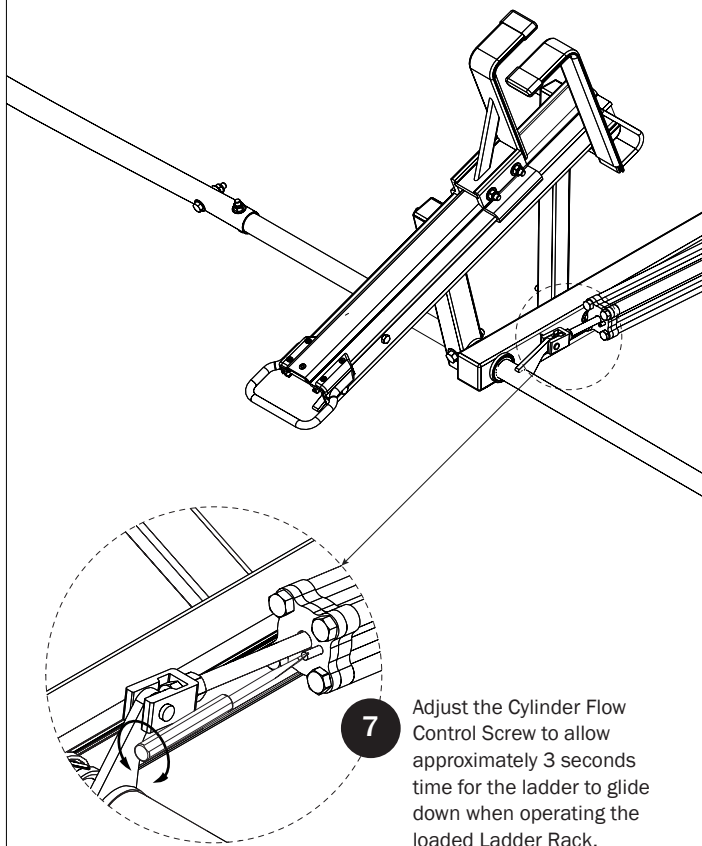


CONNECTING BAR FASTENERS



DRIVE SHAFT SEALING



CYLINDER ADJUSTMENT

NOTE: This completes the assembling of FEA-0010. If applicable, refer to your next FEA Assembly Manual.

If completed, refer back to your FBM Assembly Manual, and resume assembling at Step 3.1.

WARNING: Failure to position the Crossbars as shown in your FBM Assembly Manual may result in damage to the sliding door and/or ladder rack.

Page Intentionally Left Blank

