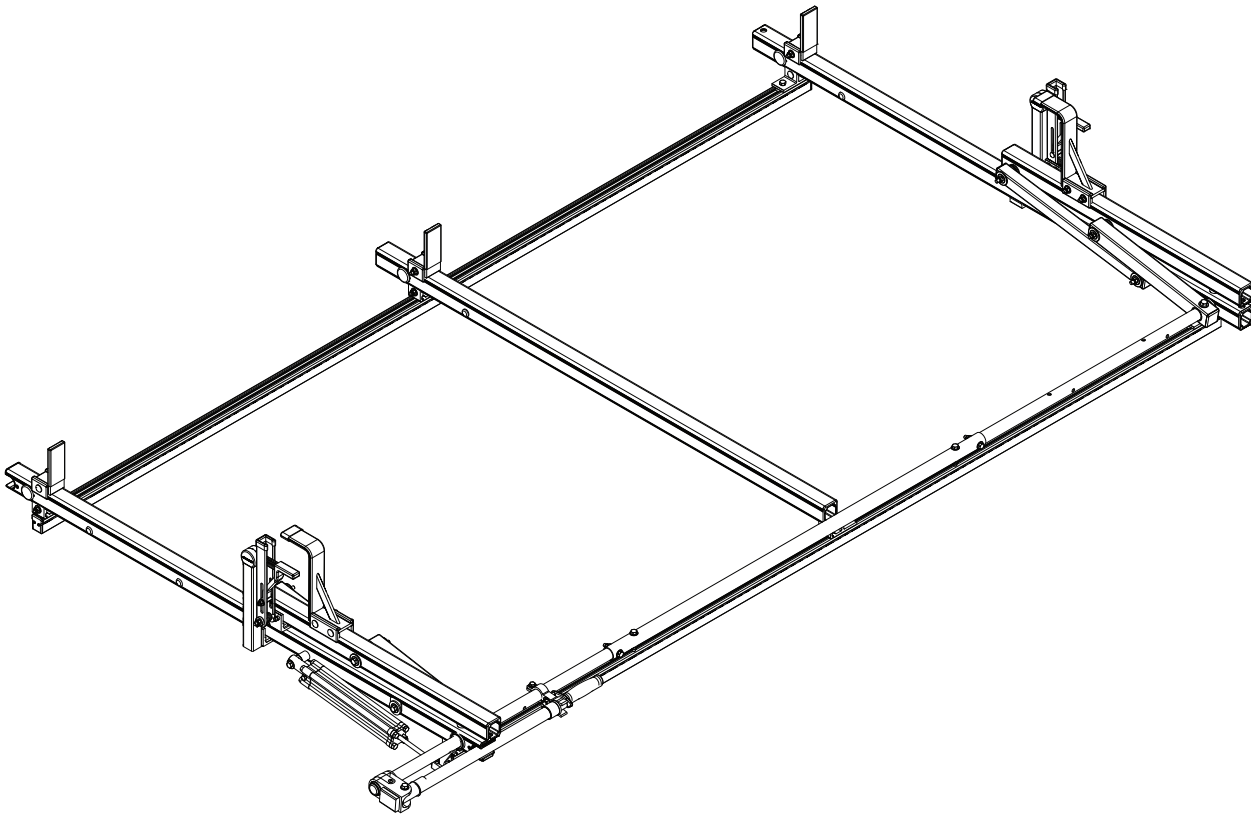


# **PRIME DESIGN™**

A Safe Fleet Brand



# **PBR3**

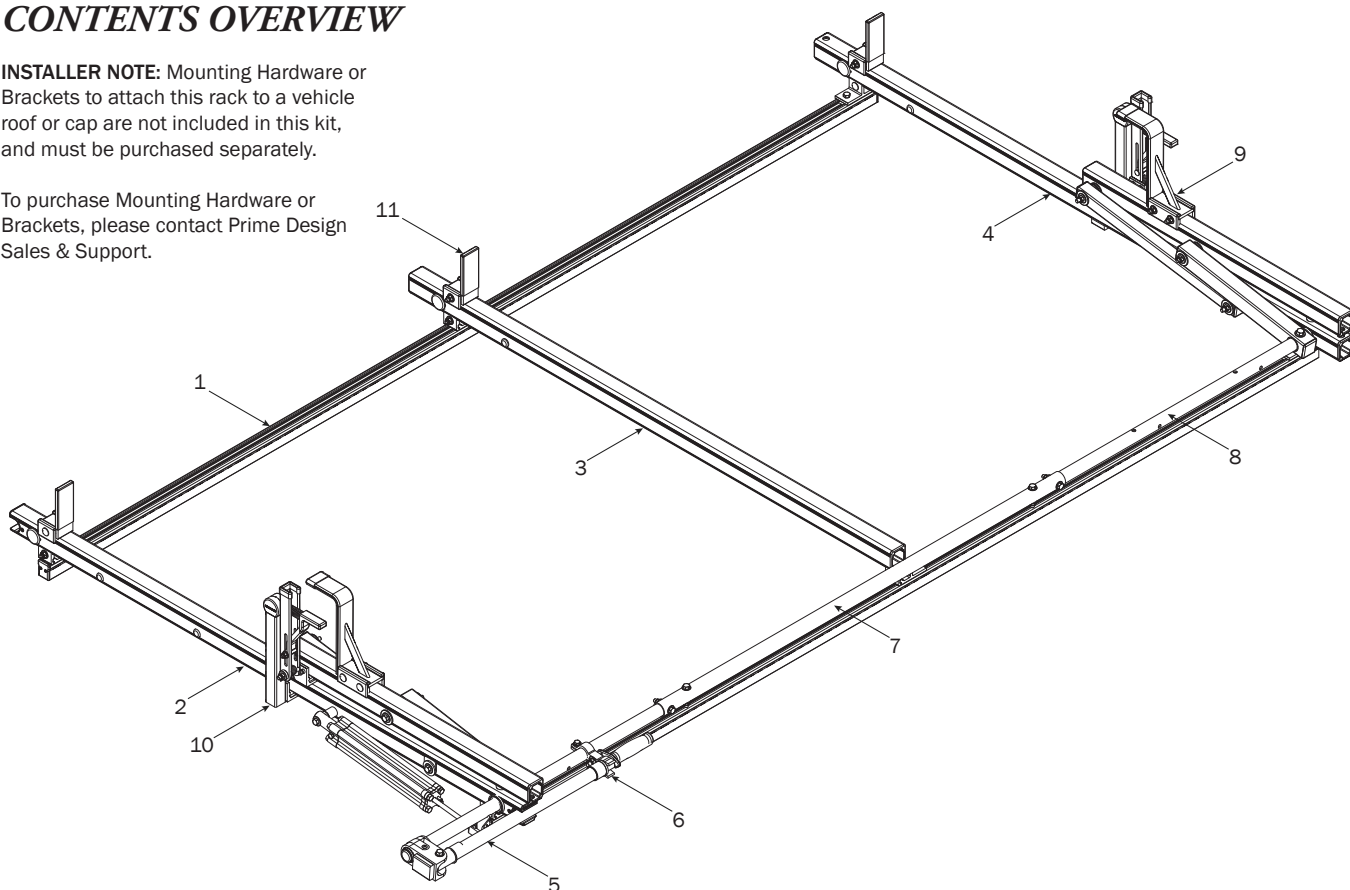
PRIME DESIGN, A SAFE FLEET BRAND

Address: 580 Opperman Drive, Eagan, MN 55123 • Toll Free: 1.8.PRIME.RACK  
Fax: 651-552-1799 • Email: [info@primedesign.net](mailto:info@primedesign.net) • Website: [www.primedesign.net](http://www.primedesign.net)

## CONTENTS OVERVIEW

**INSTALLER NOTE:** Mounting Hardware or Brackets to attach this rack to a vehicle roof or cap are not included in this kit, and must be purchased separately.

To purchase Mounting Hardware or Brackets, please contact Prime Design Sales & Support.



1—FBM3-0002 ..... (Qty 1)  
Stiff Channels with Hardware

Channels (2X)



Screws (8X)

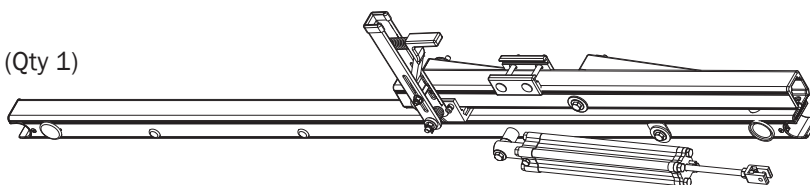


End Caps (4X)



Brackets (6X)

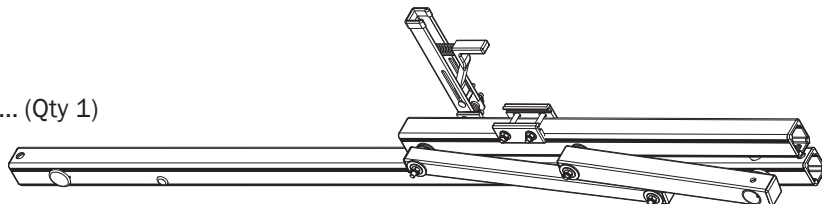
2—Rear Crossbar Assembly ..... (Qty 1)



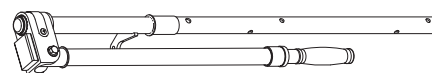
3—Center Crossbar Assembly ..... (Qty 1)



4—Front Crossbar Assembly ..... (Qty 1)



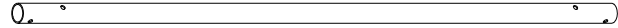
5—Rear Drive Shaft ..... (Qty 1)  
Right Hand, 34.00"



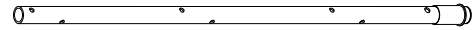
6—Handle Latch Assembly ..... (Qty 1)



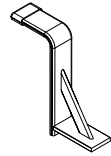
7—Connecting Bar ..... (Qty 1)  
4.00'



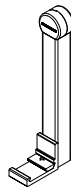
8—Front Drive Shaft ..... (Qty 1)  
B Version, 35.75"



9—Z Post ..... (Qty 4)  
Adjustable, 7.25"



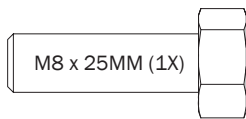
10—L Post ..... (Qty 4)  
Roller Cap, 9.25"



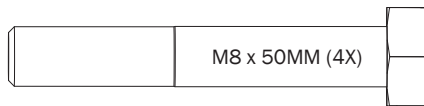
11—Ladder Stop Assembly ..... (Qty 3)  
1.75"



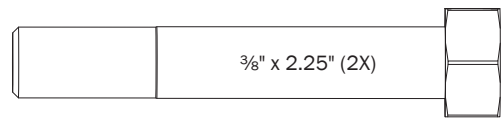
12—HKT-8163 (Not called out in Overview)..... (Qty 1)



M8 x 25MM (1X)



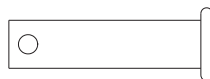
M8 x 50MM (4X)



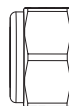
3/8" x 2.25" (2X)



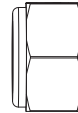
Cotter Pin (1X)



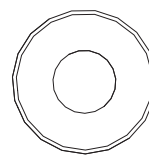
Clevis Pin (1X)



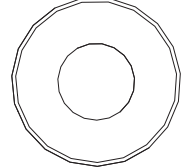
M8 Lock Nut (5X)



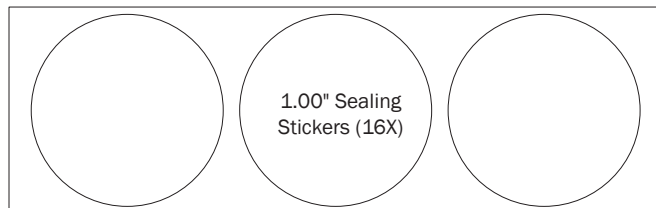
3/8" Lock Nut (2X)



5/16" Flat Washer (10X)



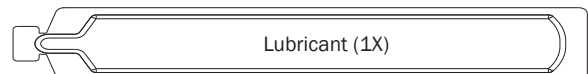
3/8" Flat Washer (4X)



1.00" Sealing  
Stickers (16X)



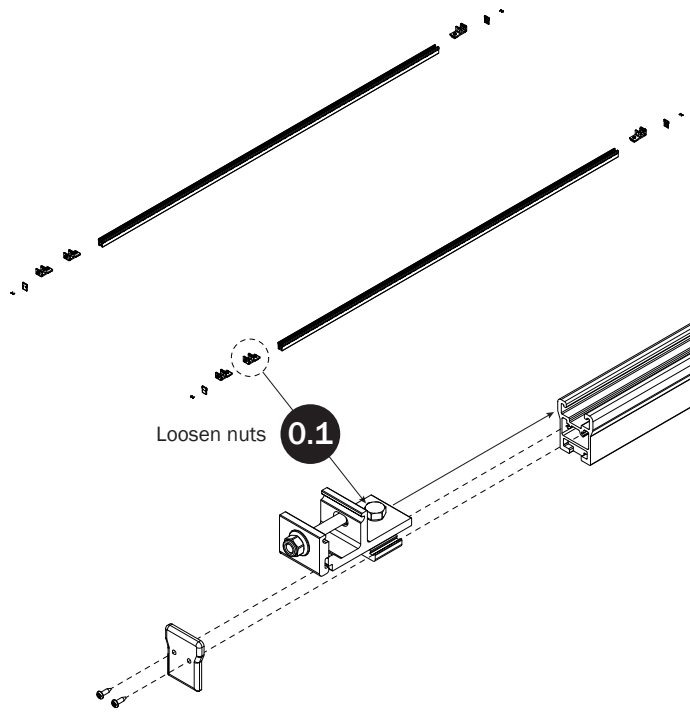
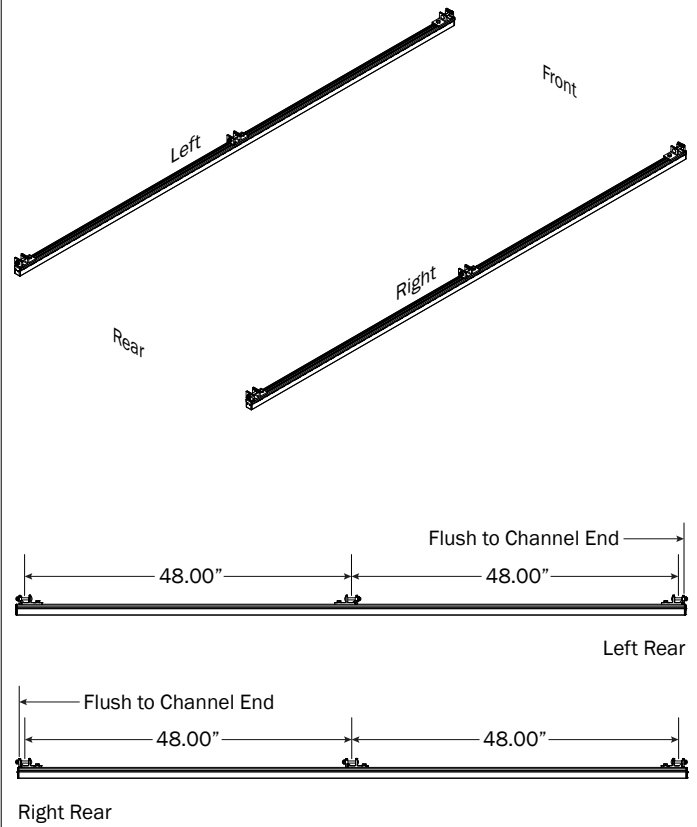
Anti-Seize (1X)



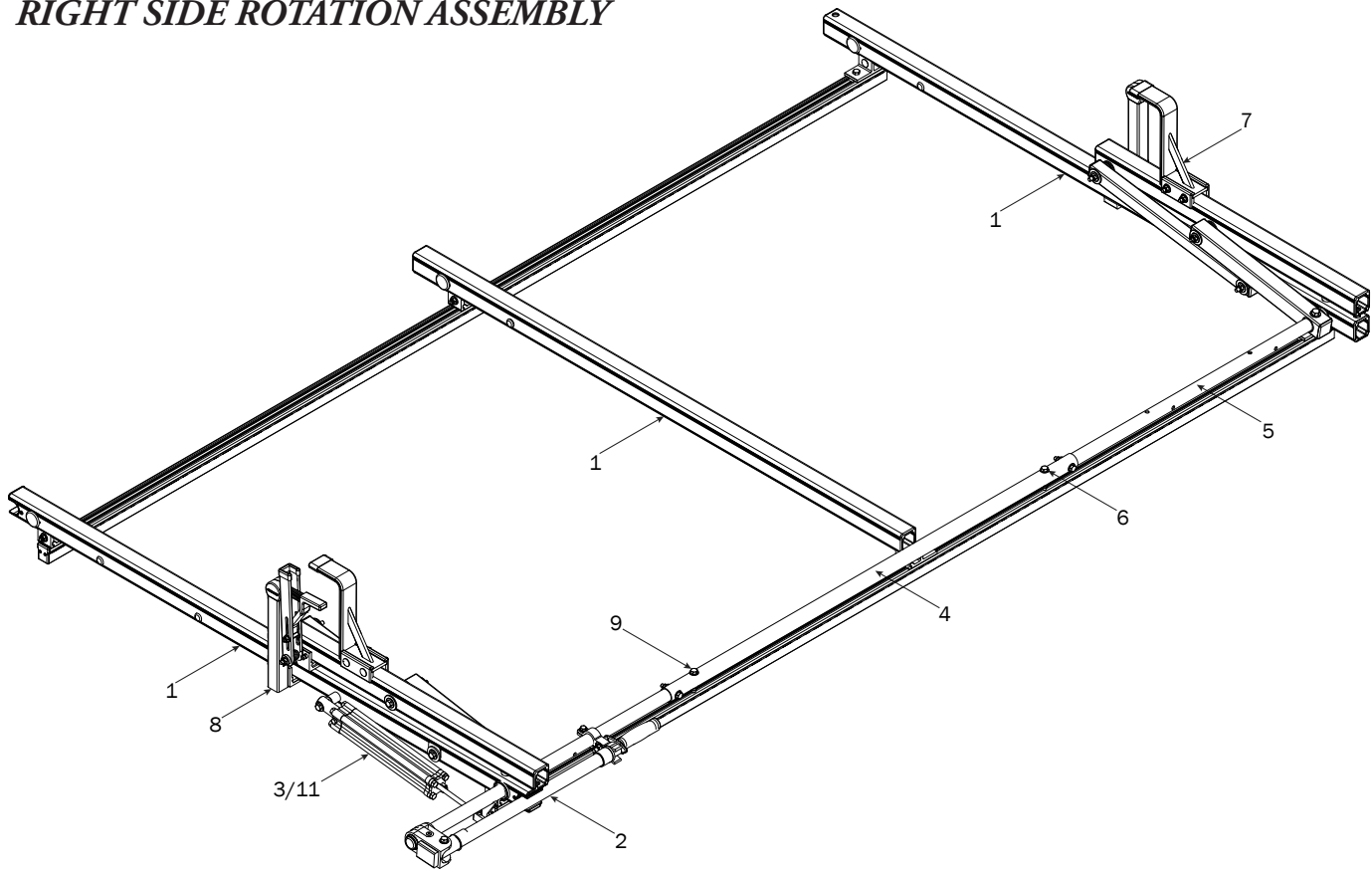
Lubricant (1X)

**FBM3-0002**

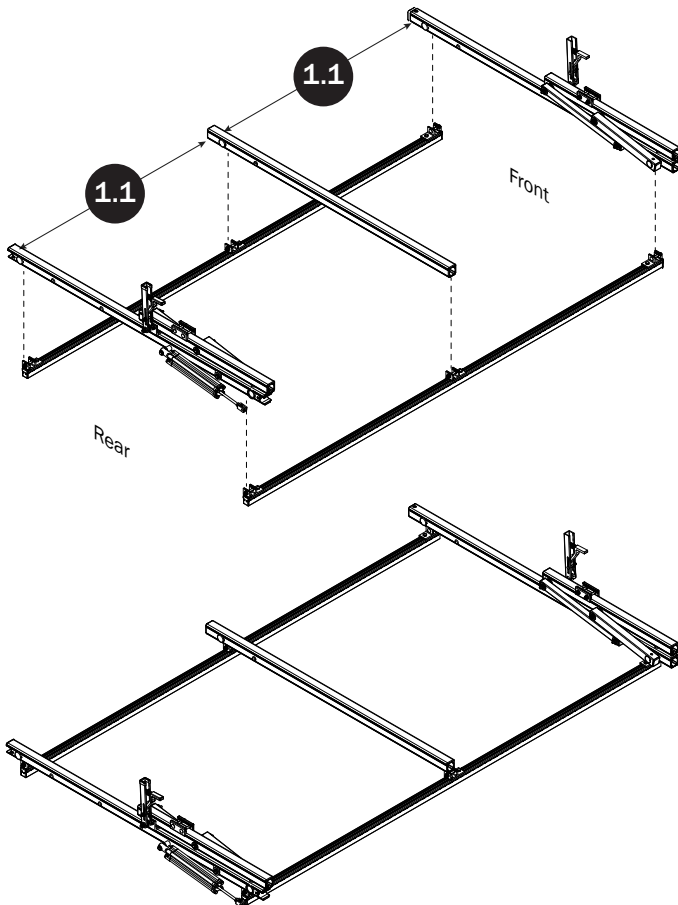
Mounting brackets and/or hardware to attach rack to roof is not included. Mounting Assemblies must be ordered separately, and according to your truck cap's manufacturer.

**0.2** Set to distances shown, then torque nuts to 90 in-lbs

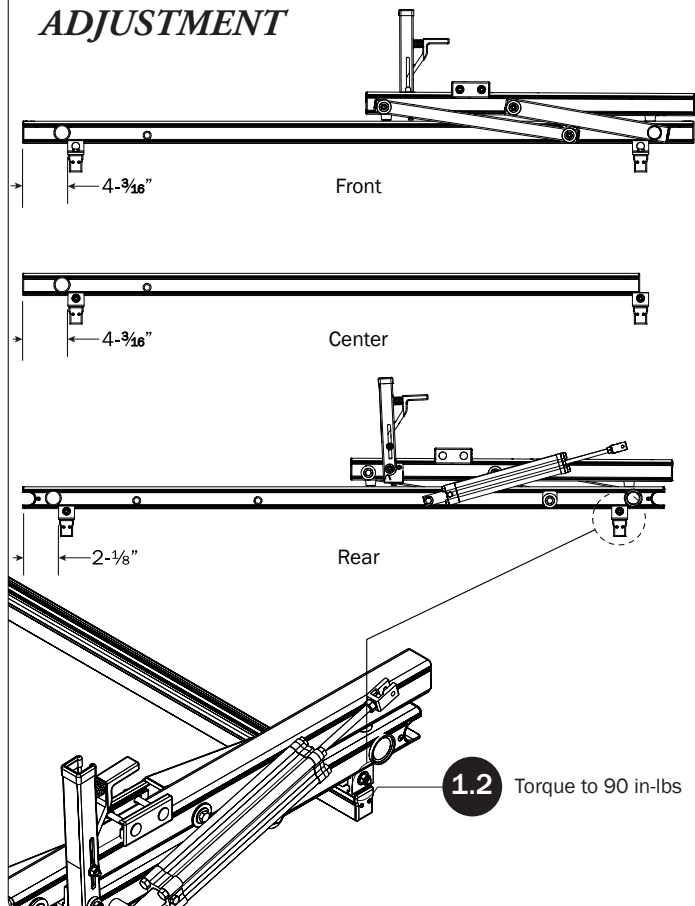
## RIGHT SIDE ROTATION ASSEMBLY

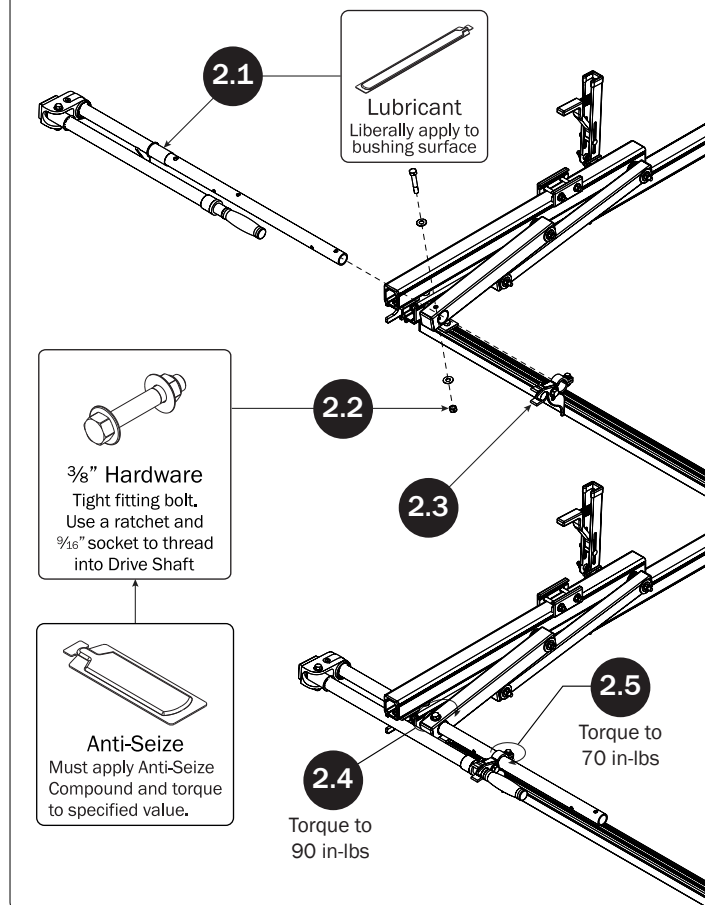
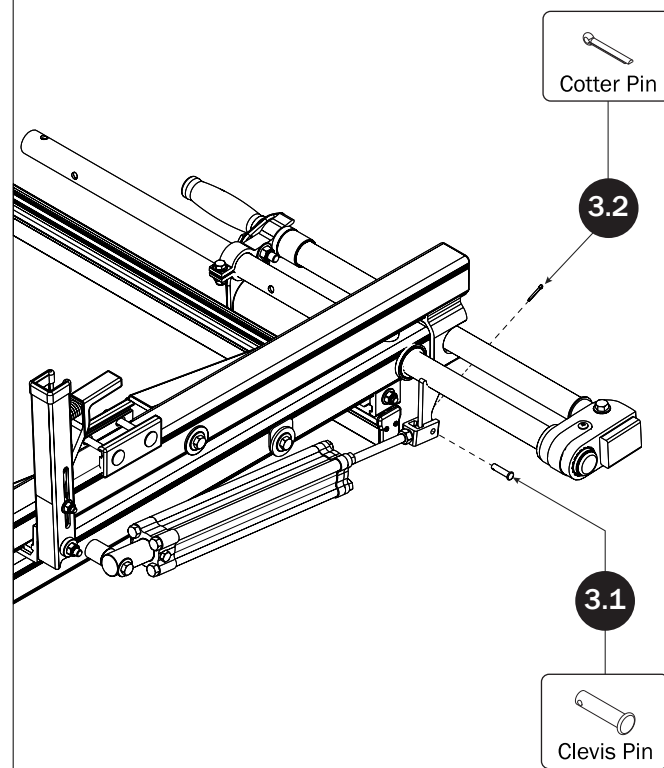
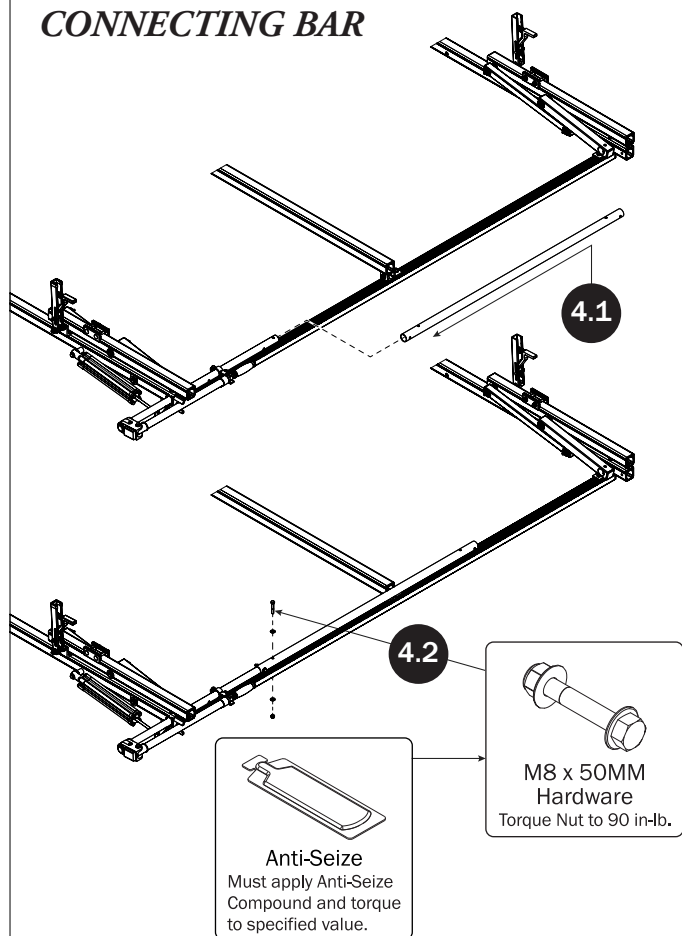
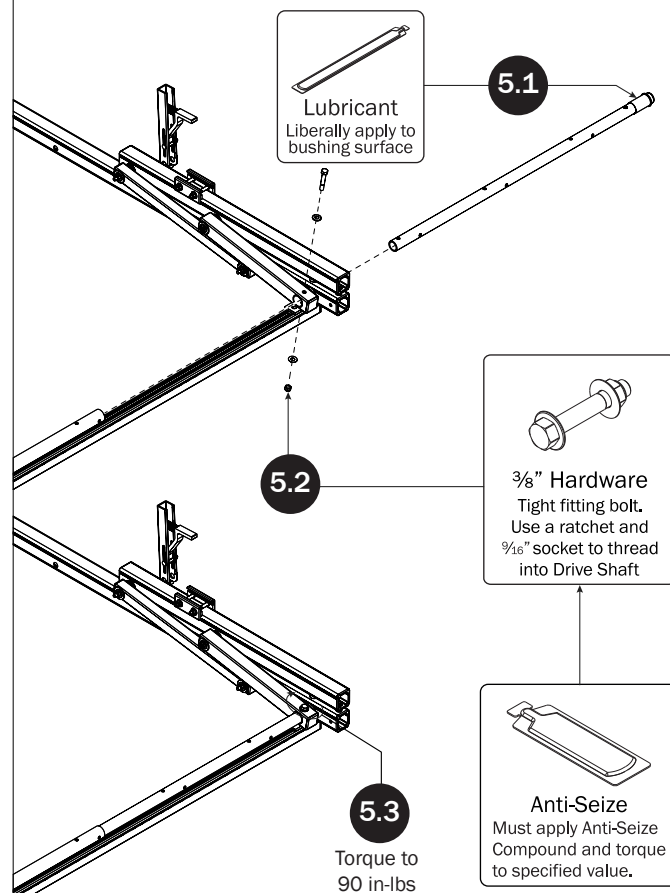


### CROSSBARS

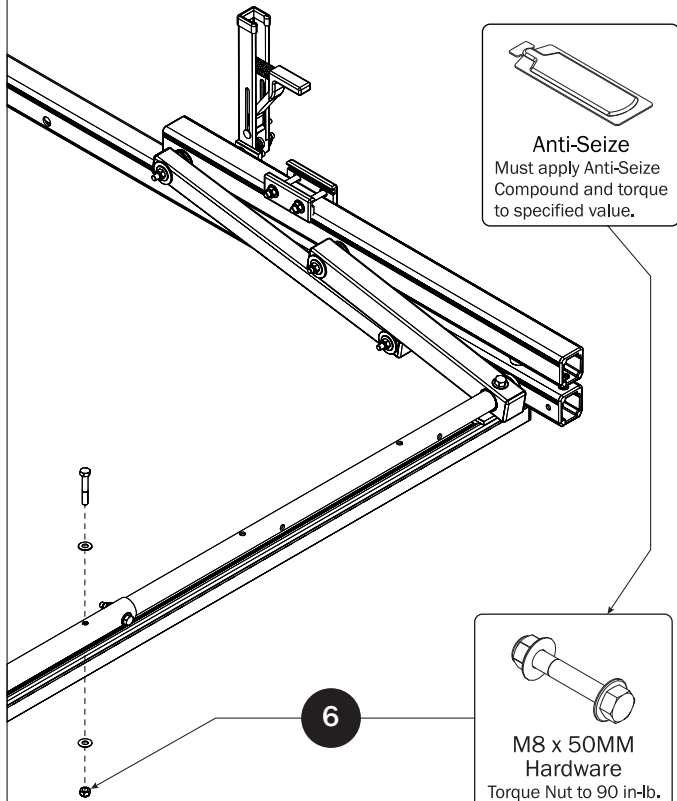


### CROSSBAR ADJUSTMENT



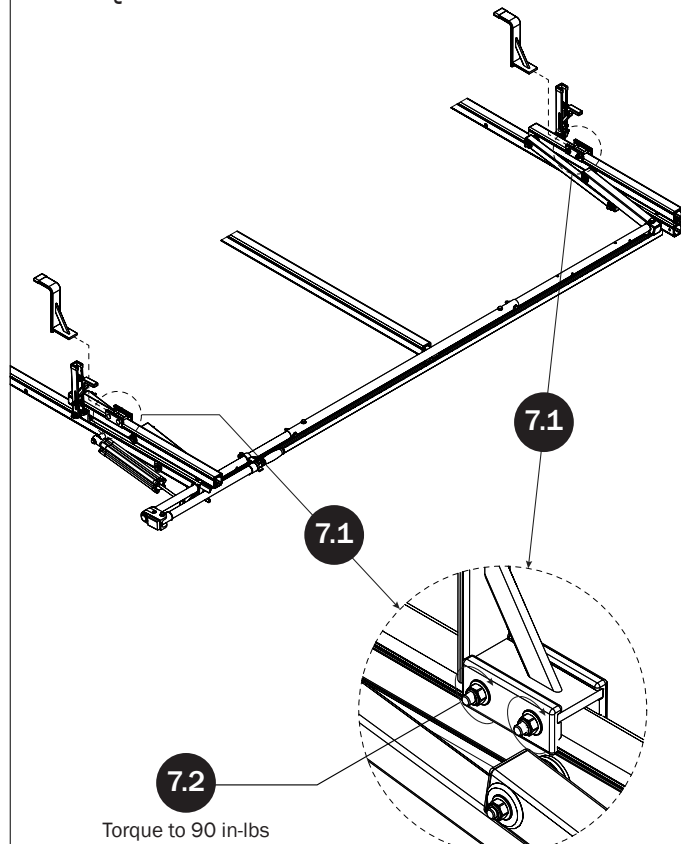
**REAR DRIVE SHAFT****CYLINDER HARDWARE****CONNECTING BAR****FRONT DRIVE SHAFT**

## CONNECTING BAR FASTENERS



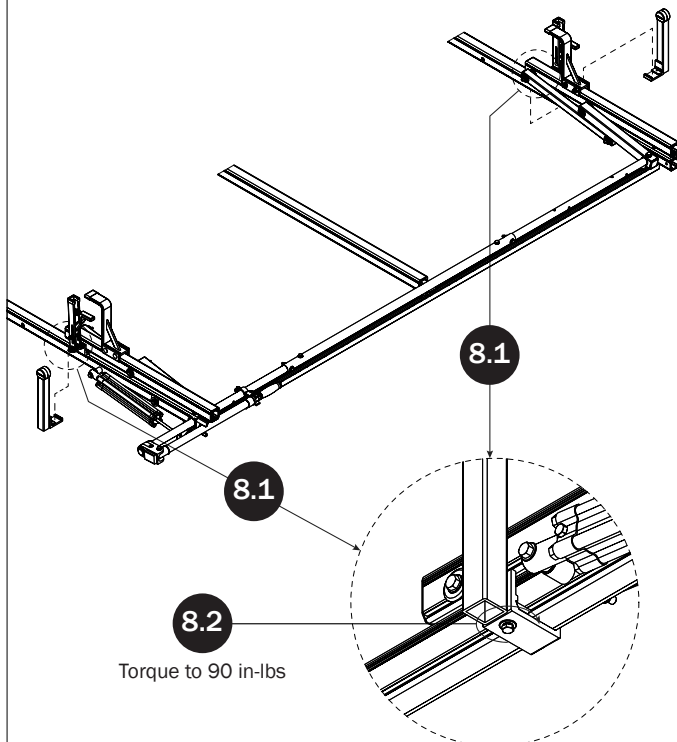
## Z POSTS

SEE QUICK START GUIDE FOR ADJUSTMENTS

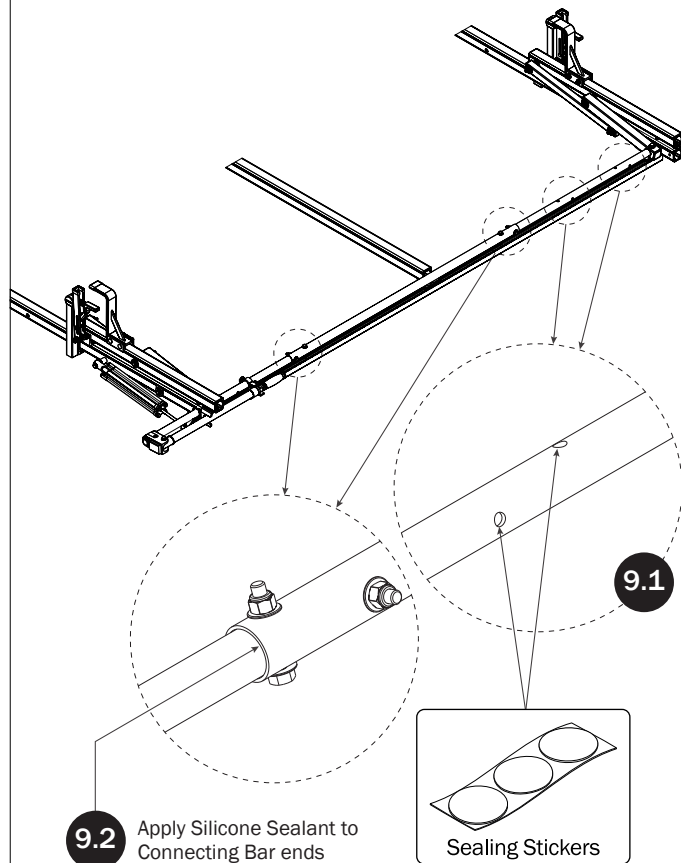


## L POSTS

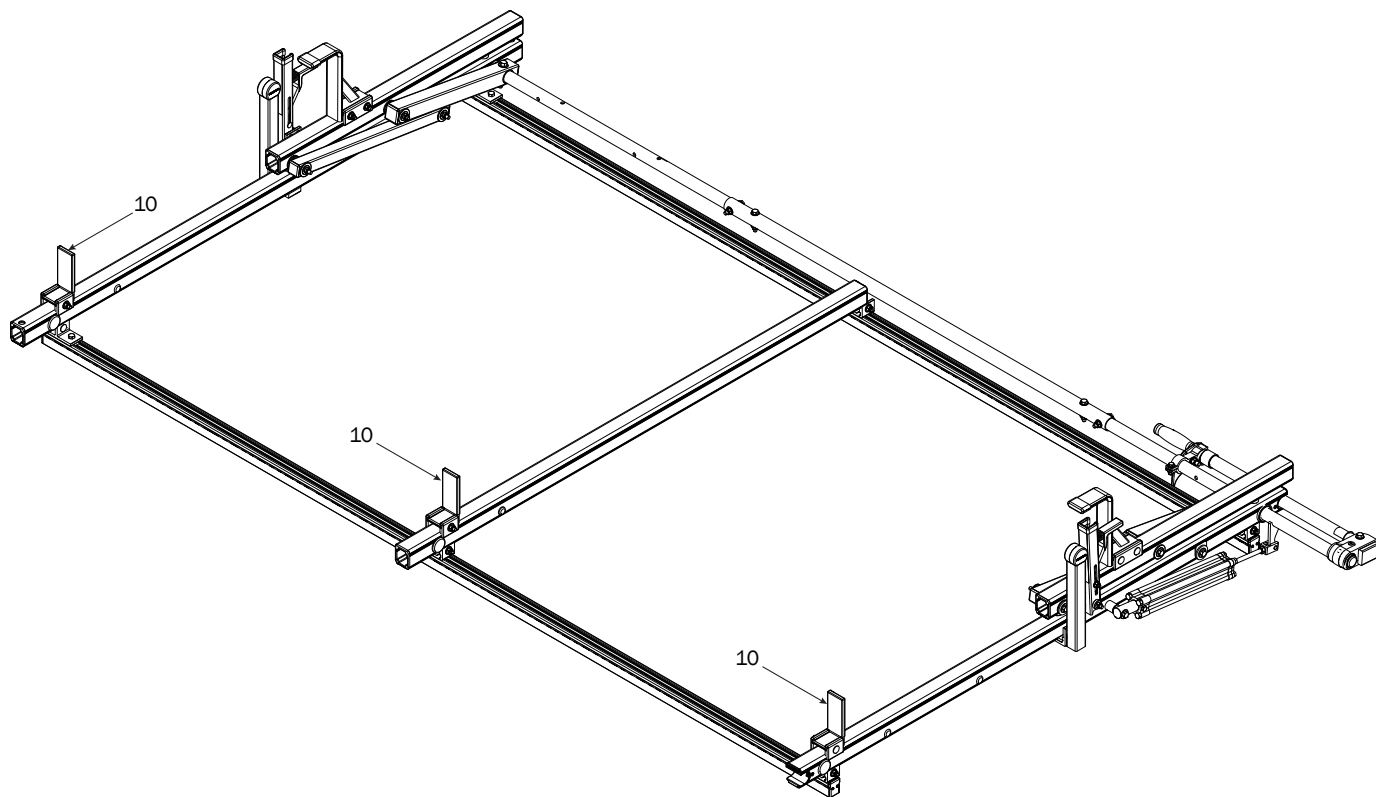
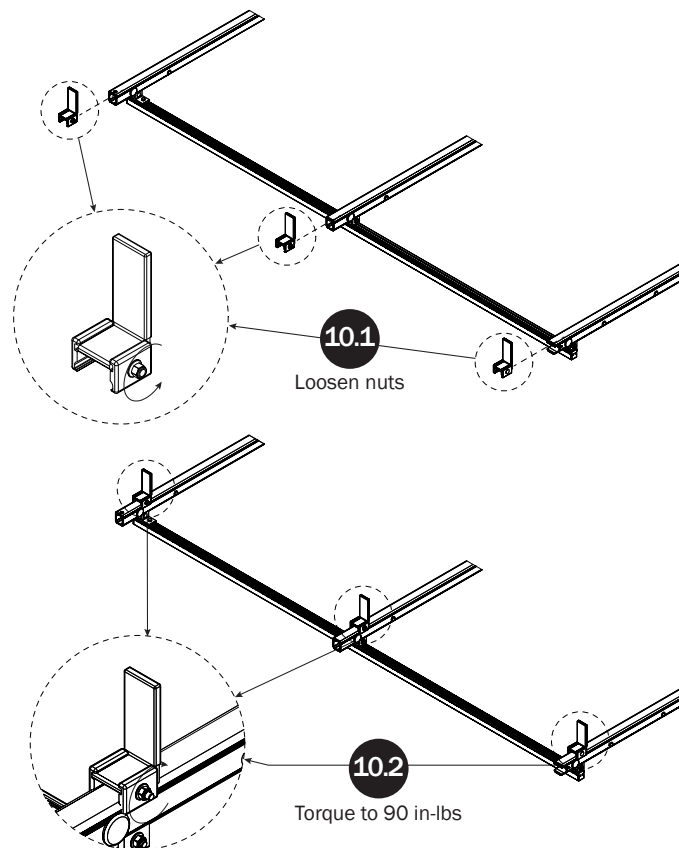
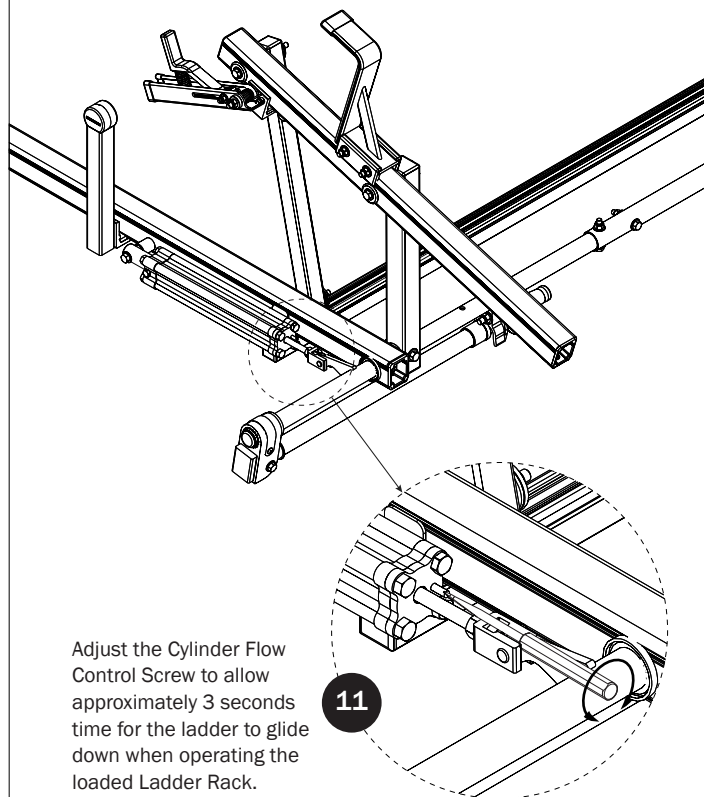
SEE QUICK START GUIDE FOR ADJUSTMENTS



## DRIVE SHAFT SEALING





**LEFT SIDE BASE****LADDER STOPS****CYLINDER ADJUSTMENT**

USAM-PBR36001-US01 Rev-A 0218