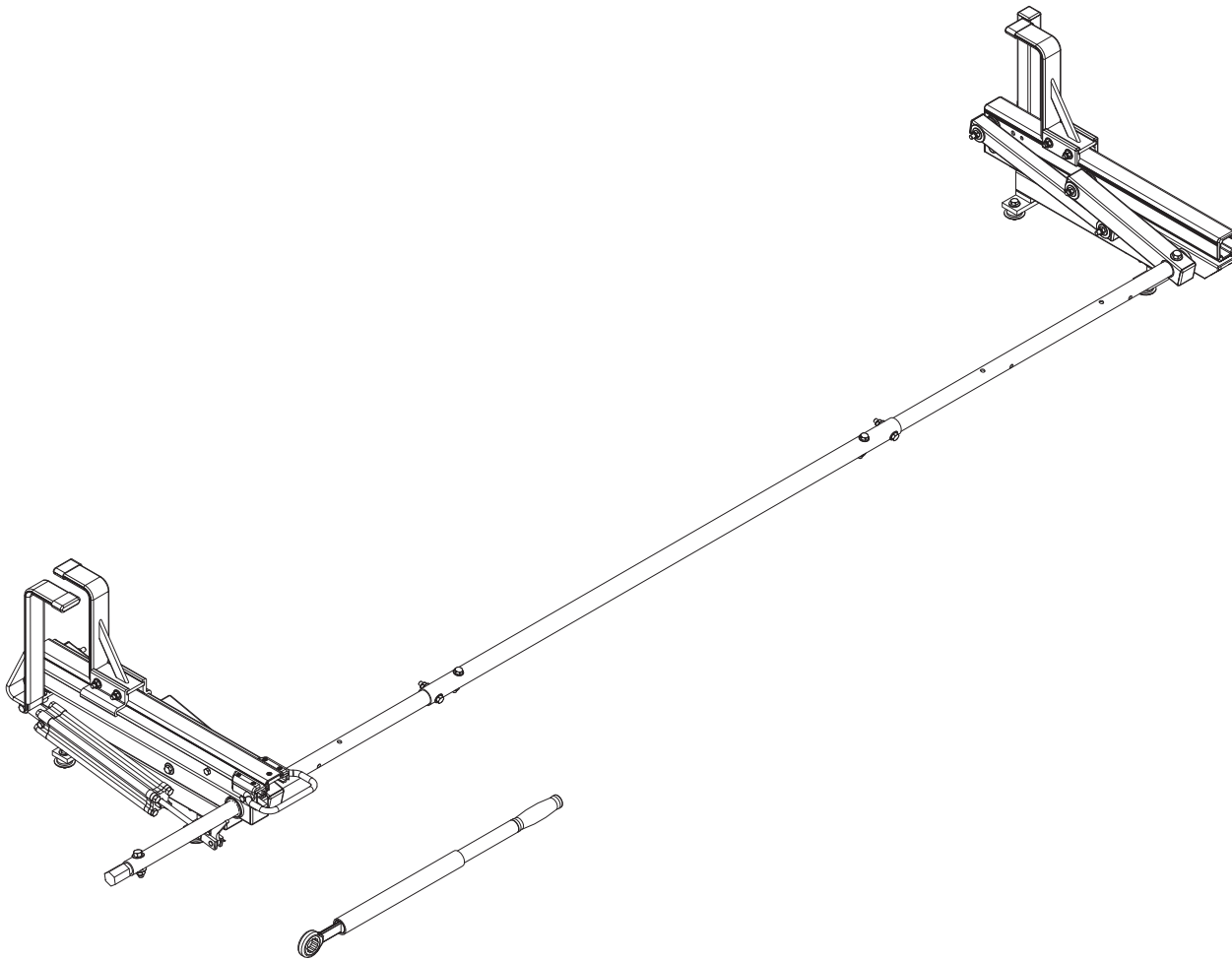


# PRIME DESIGN™

## A Safe Fleet Brand

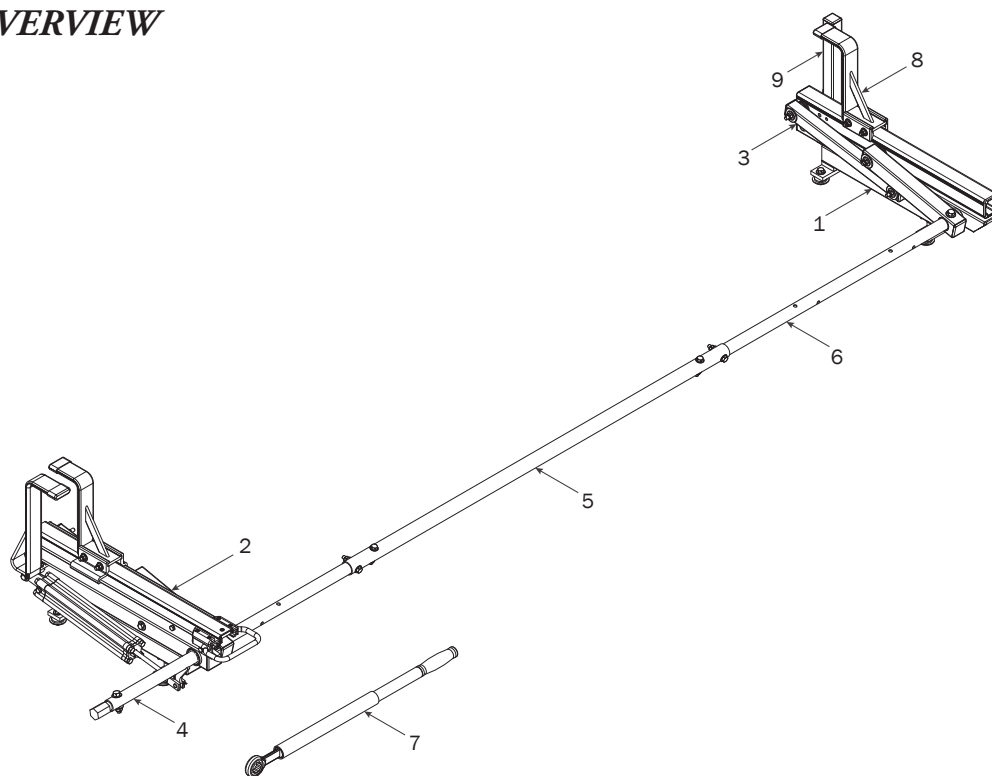


PRIME DESIGN, A SAFE FLEET BRAND

Address: 580 Opperman Drive, Eagan, MN 55123 • Toll Free: 1.8.PRIME.RACK

Fax: 651-552-1799 • Email: [info@primedesign.net](mailto:info@primedesign.net) • Website: [www.primedesign.net](http://www.primedesign.net)

UXR 0005



1—Utility Base Standing Mount..... (Qty 2)

2—Rear Rotation Assembly..... (Qty 1)

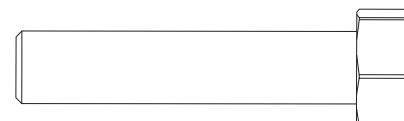
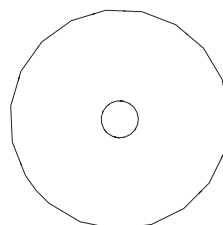
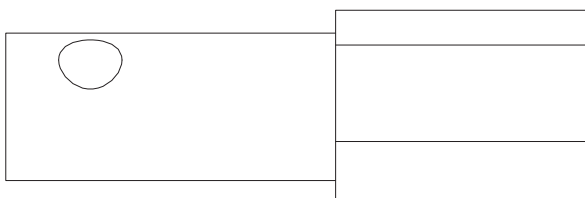
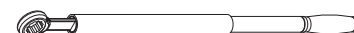
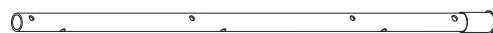
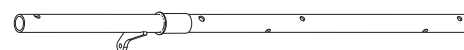
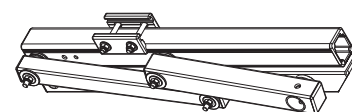
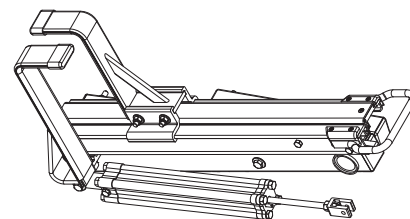
3—Front Rotation Assembly..... (Qty 1)

4—Rear Drive Shaft..... (Qty 1)  
Right Hand, B4 Version, 50.00"

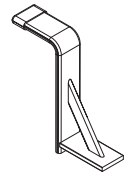
5—Connecting Bar..... (Qty 1)  
48.00"

6—Front Drive Shaft ..... (Qty 1)  
B Version, 35.75"

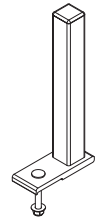
7—Ratcheting Handle Assembly ..... (Qty 1)  
With Hardware



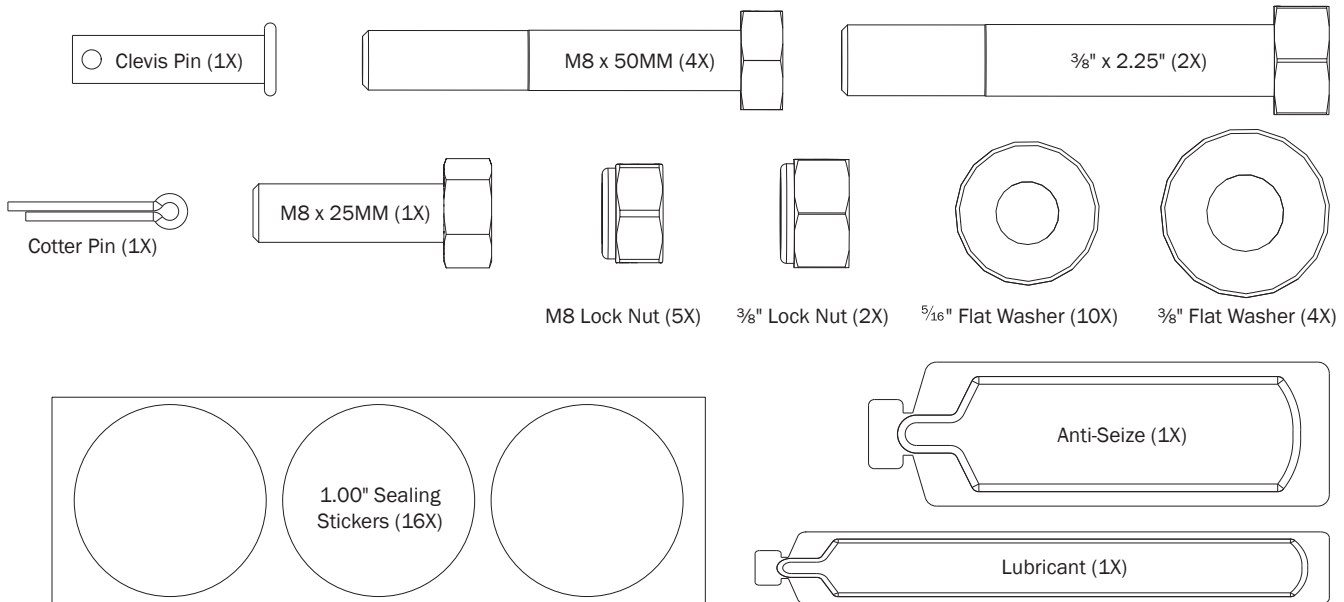
8—Z Post ..... (Qty 1)  
Adjustable, 7.25"



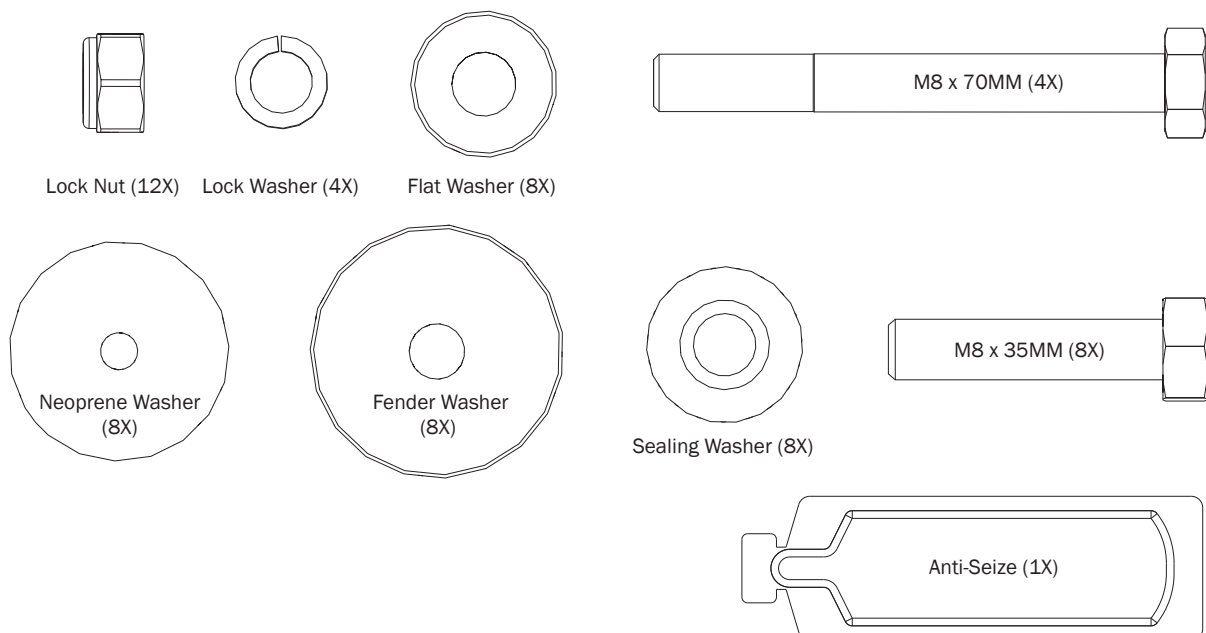
9—L Post ..... (Qty 1)  
9.25"



#### HKT-8163-Rotation Hardware Kit



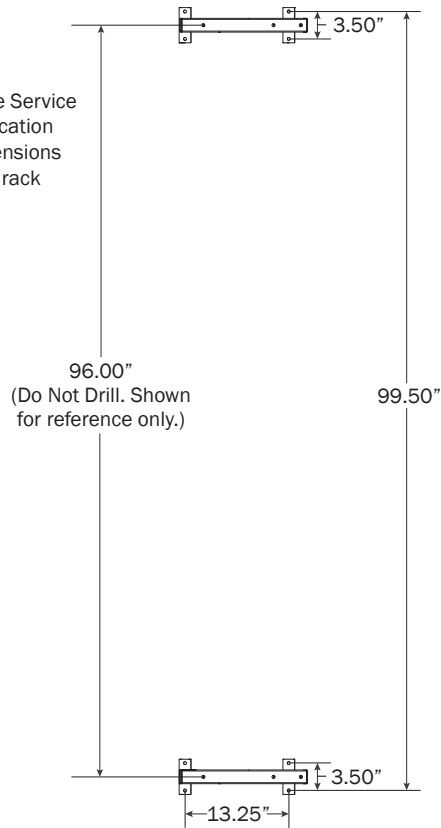
#### HKT-0122 Mounting Hardware Kit



## UTB-2316 MOUNTING BRACKETS BRACKET PRE-ASSEMBLY

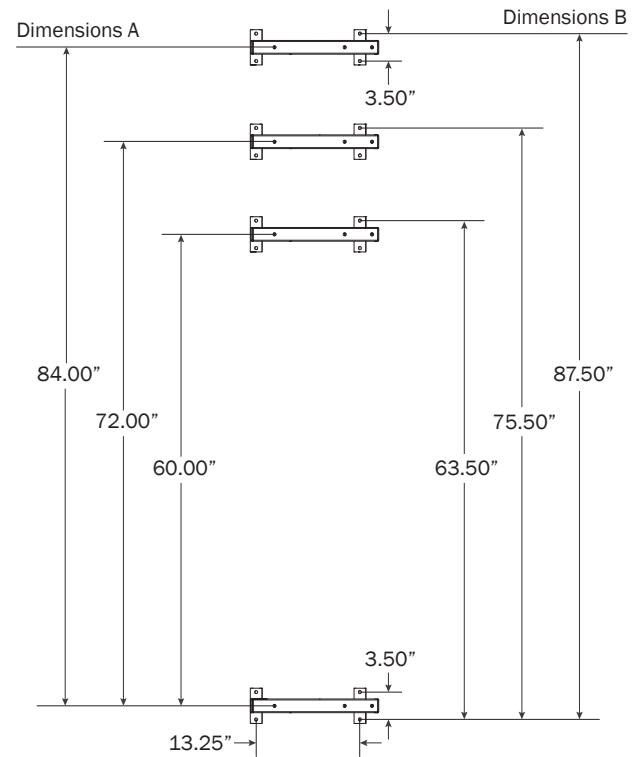
**0.1**

Drill holes into the Service Body mounting location according to dimensions shown for 8.00 ft rack configuration.

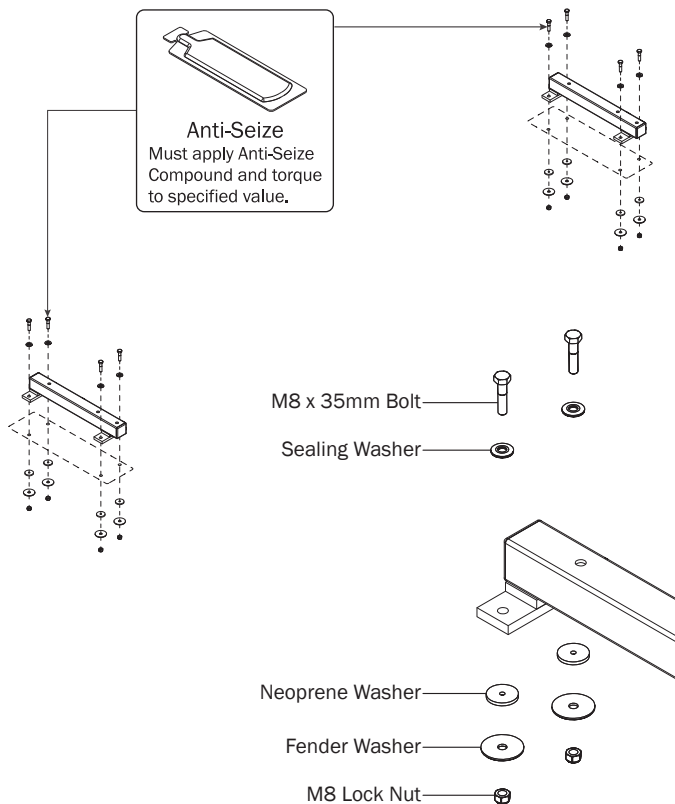

**0.2**

Dimensions shown below are for 5' (60.00"), 6' (72.00"), and 7' (84.00") spacing.

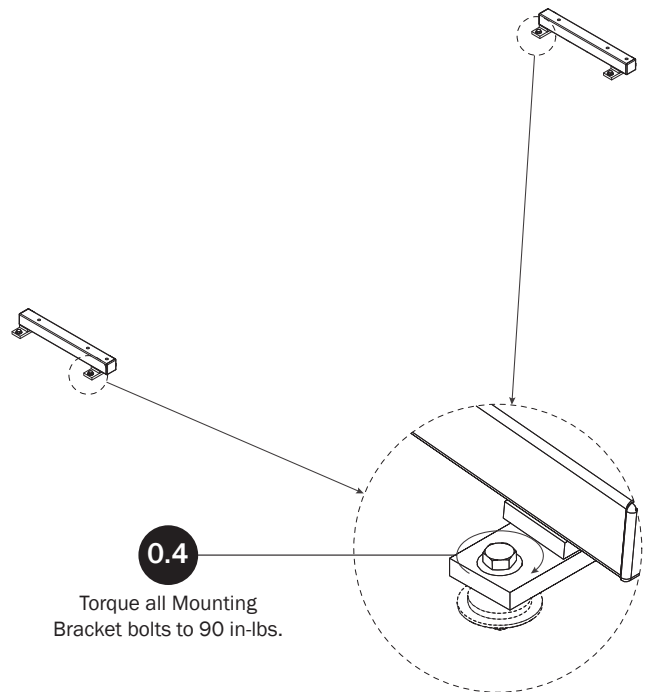
Dimensions A are measured from center to center of top Mounting Rail. Dimensions B are measured from outside Bracket Hole to outside Bracket Hole.


**0.3**

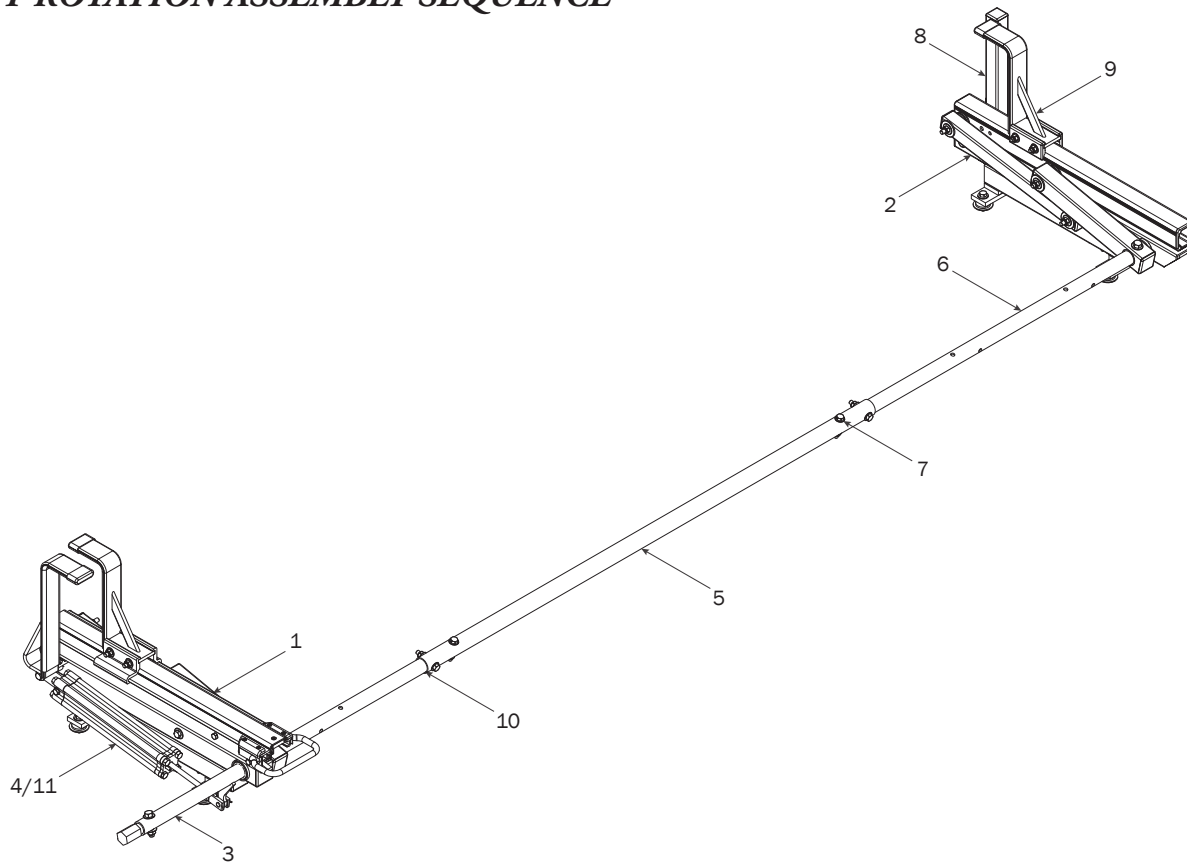
Apply Anti-Seize compound to Mounting Bracket bolts. The shorter bolt assemblies are on the outside as shown.


**0.4**

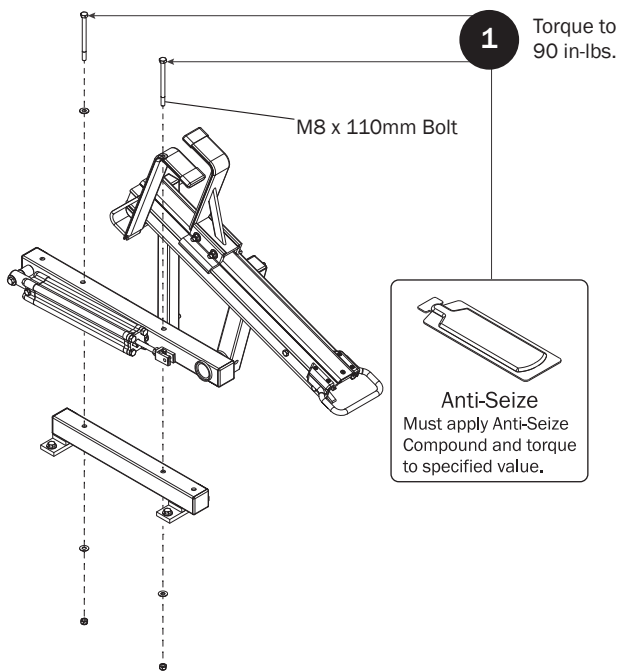
Torque all Mounting Bracket bolts to 90 in-lbs.



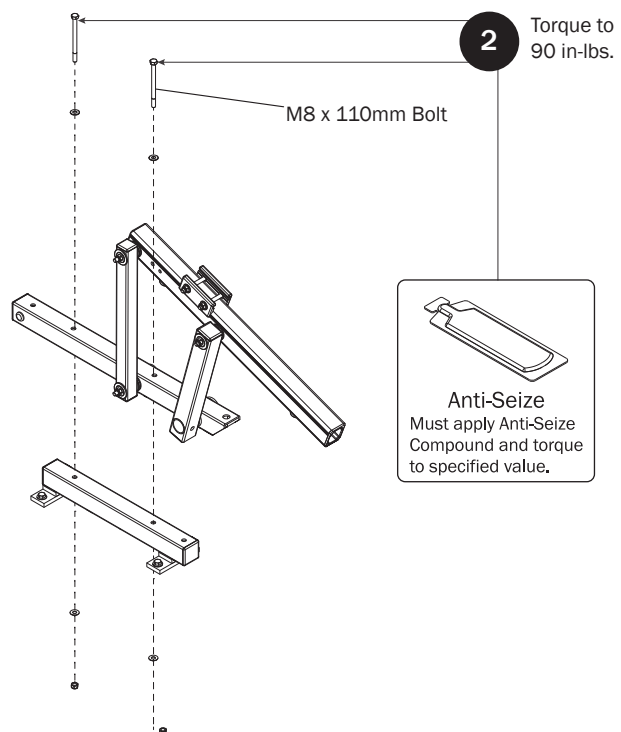
## RIGHT ROTATION ASSEMBLY SEQUENCE

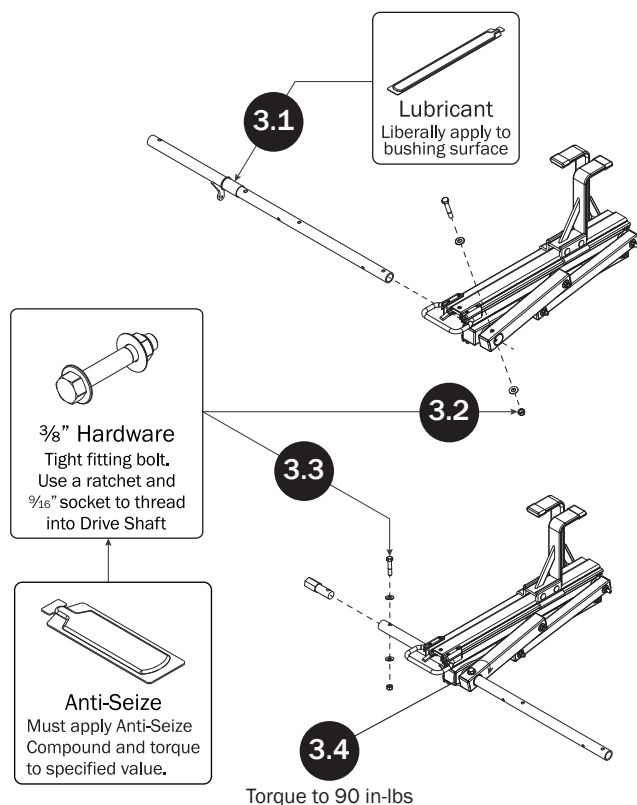
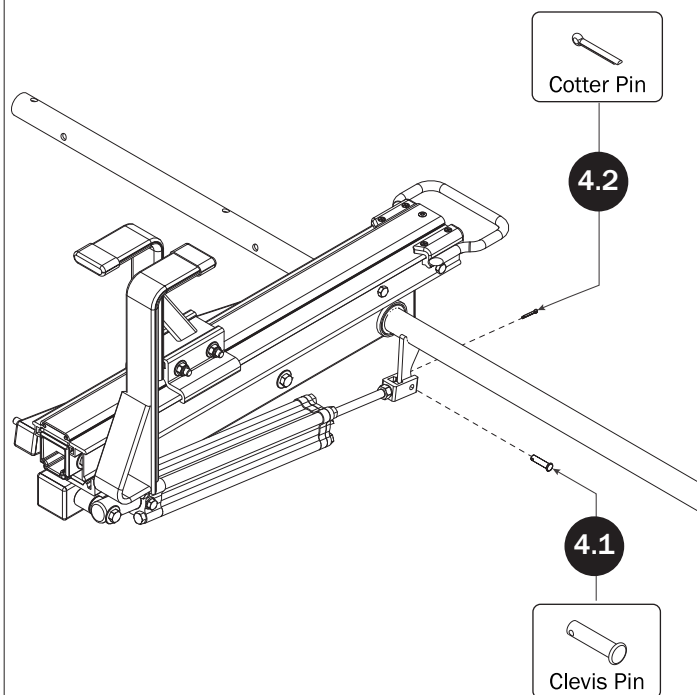
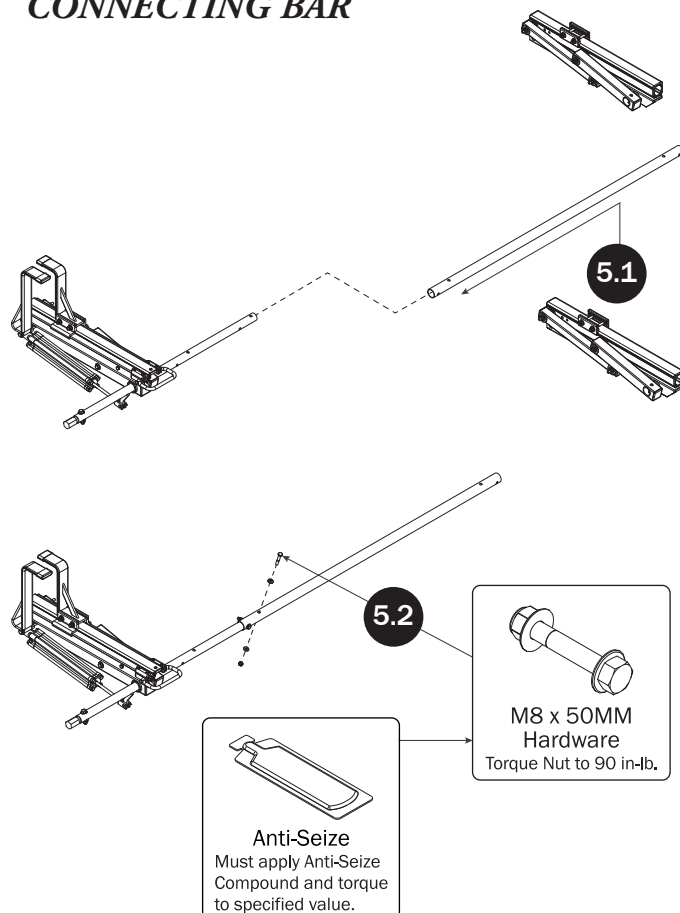
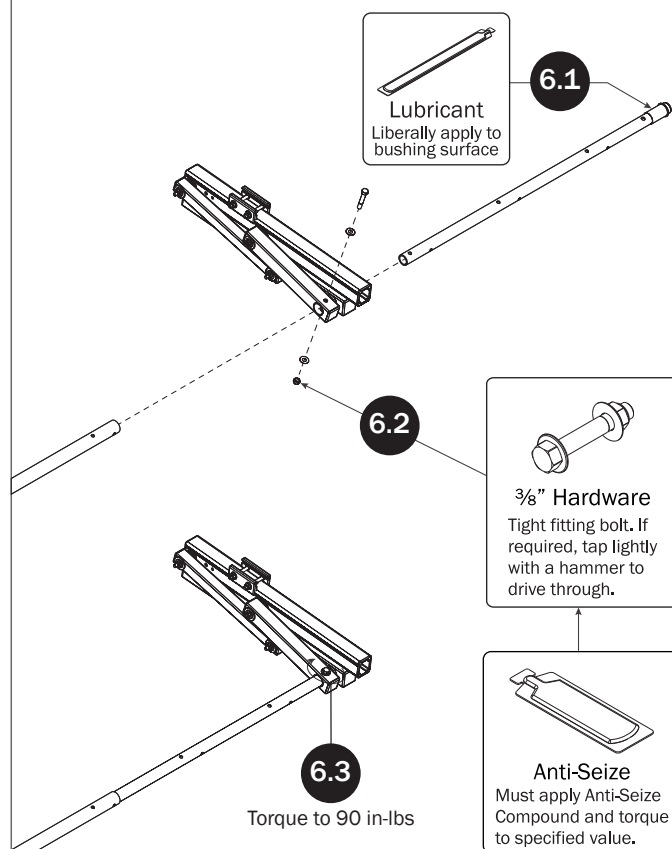


### REAR ROTATION ASSEMBLY

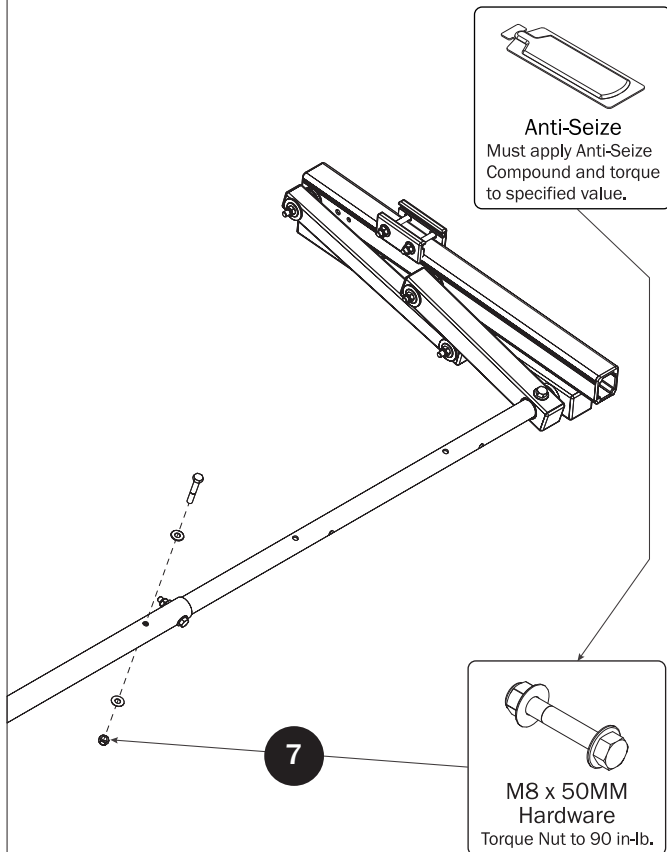


### FRONT ROTATION ASSEMBLY

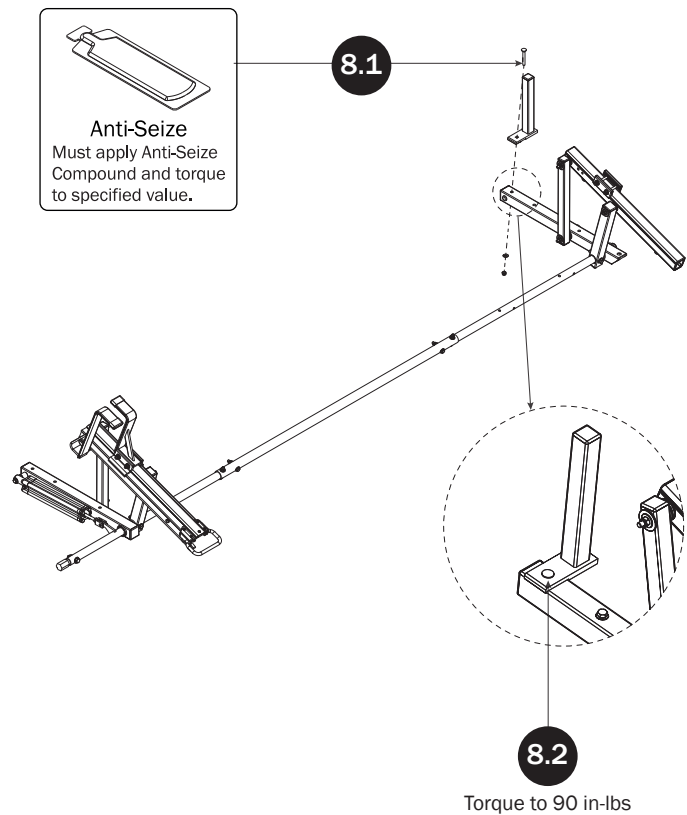


**REAR DRIVE SHAFT****CYLINDER HARDWARE****CONNECTING BAR****FRONT DRIVE SHAFT**

## CONNECTING BAR FASTENERS

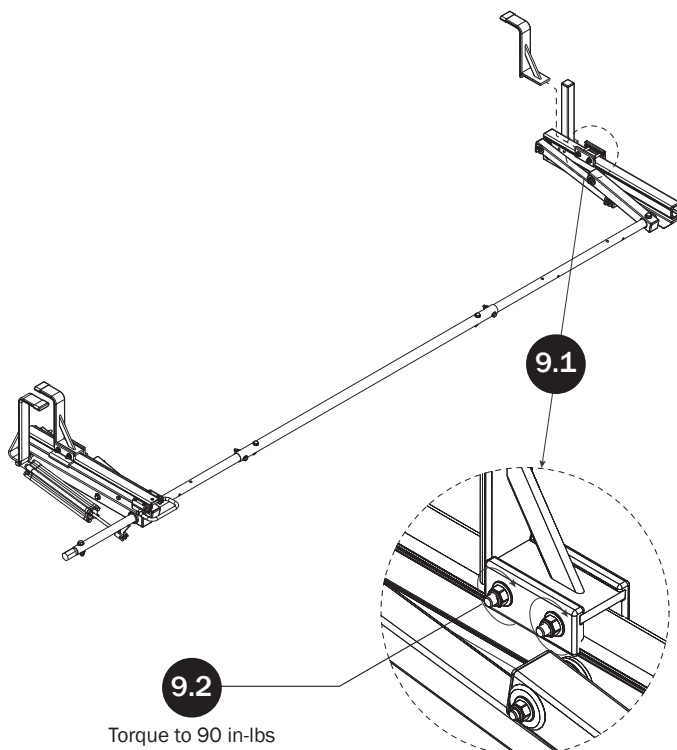


## L POSTS

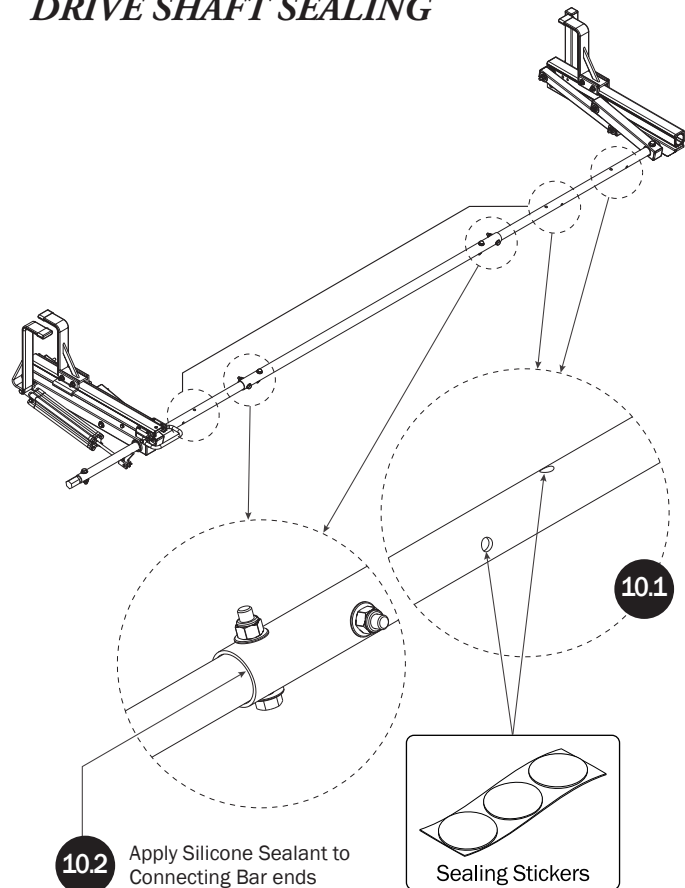


## Z POSTS

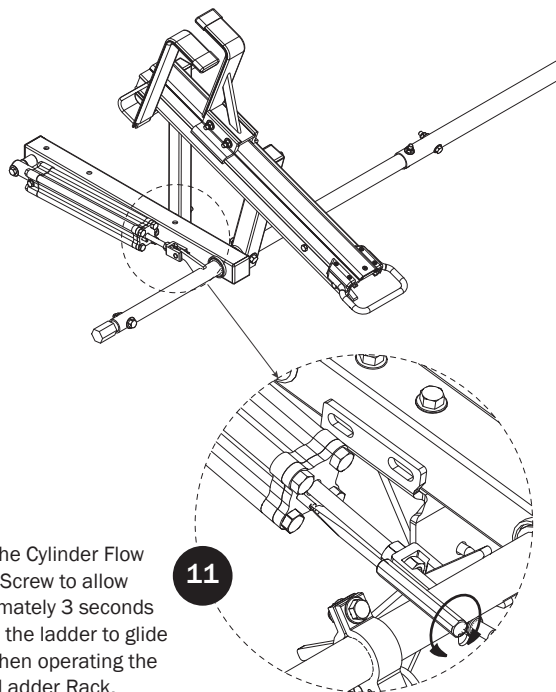
SEE QUICK START GUIDE FOR ADJUSTMENTS



## DRIVE SHAFT SEALING



## CYLINDER ADJUSTMENT



Adjust the Cylinder Flow Control Screw to allow approximately 3 seconds time for the ladder to glide down when operating the loaded Ladder Rack.

**11**

USAM-UXR0005-US01 Rev-A 0618