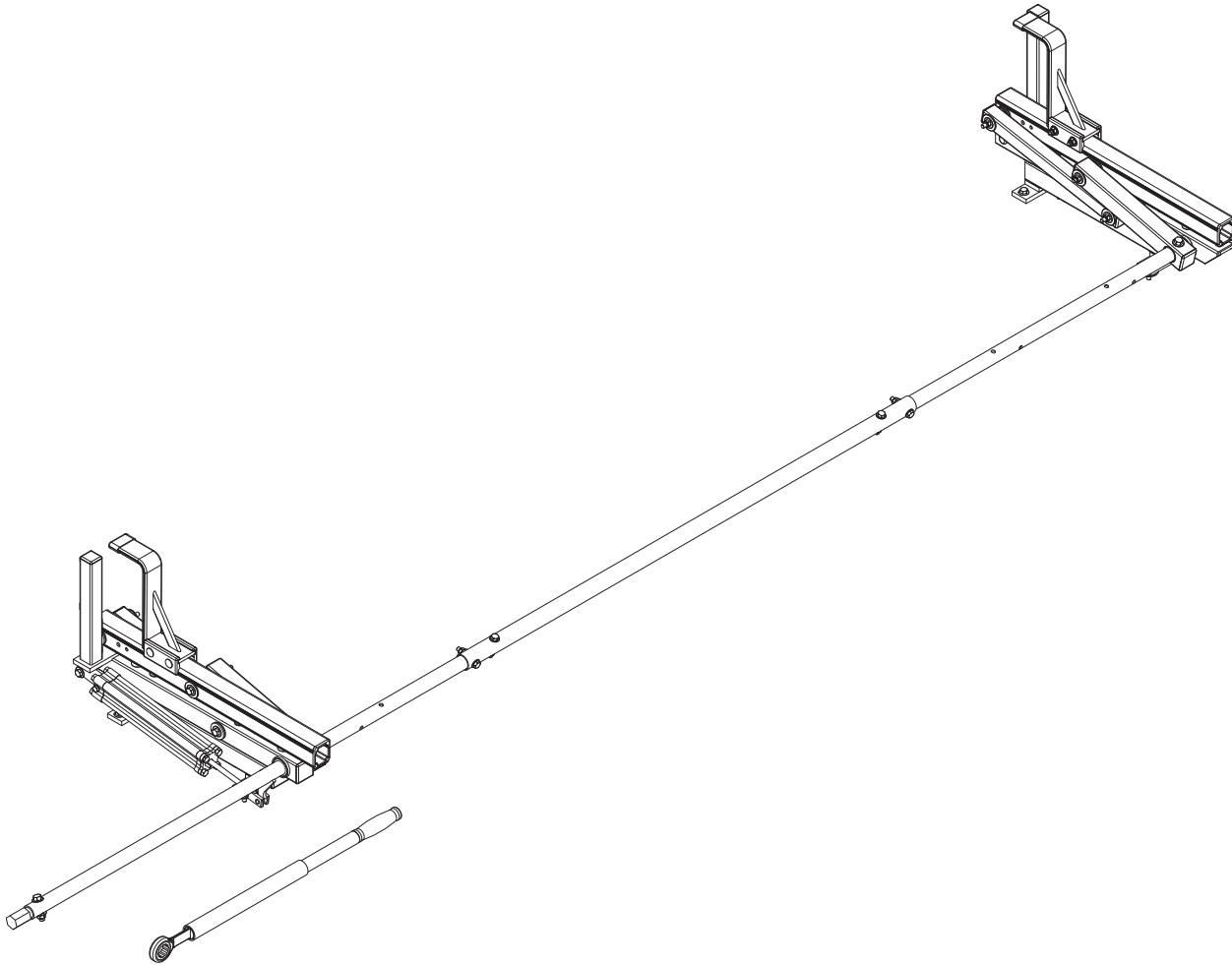


PRIME DESIGN™

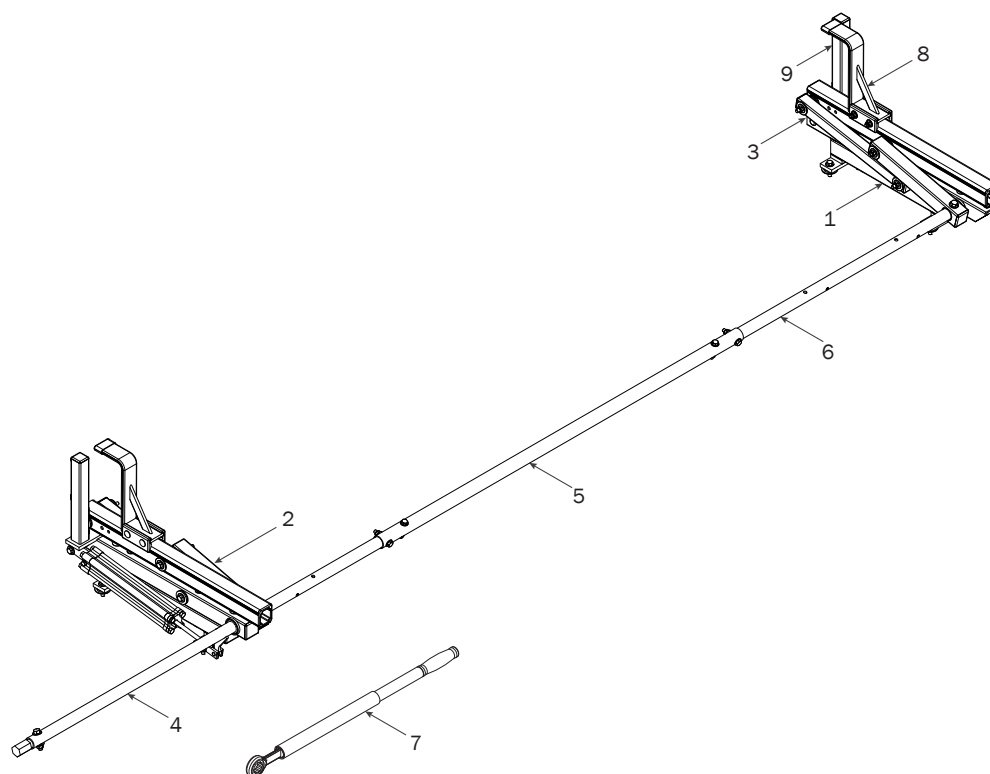
A Safe Fleet Brand



UXR

PRIME DESIGN, A SAFE FLEET BRAND

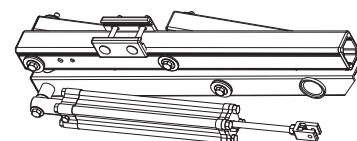
Address: 580 Opperman Drive, Eagan, MN 55123 • Toll Free: 1.8.PRIME.RACK
Fax: 651-552-1799 • Email: info@primedesign.net • Website: www.primedesign.net



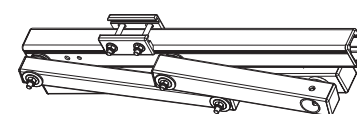
1—Utility Base Standing Mount..... (Qty 2)



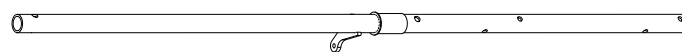
2—Rear Rotation Assembly..... (Qty 1)



3—Front Rotation Assembly..... (Qty 1)



4—Rear Drive Shaft..... (Qty 1)
Right Hand, B4 Version, 50.00"



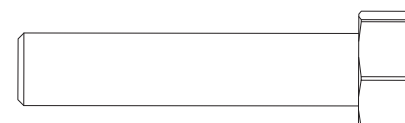
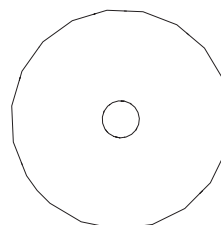
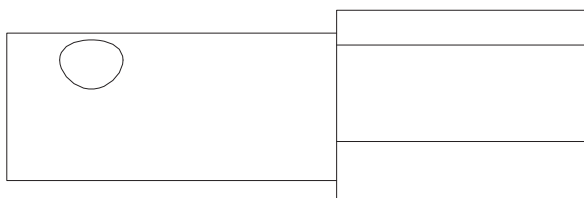
5—Connecting Bar..... (Qty 1)
48.00"



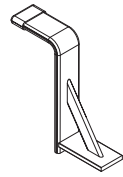
6—Front Drive Shaft..... (Qty 1)
B Version, 35.75"



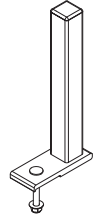
7—Ratcheting Handle Assembly (Qty 1)
With Hardware



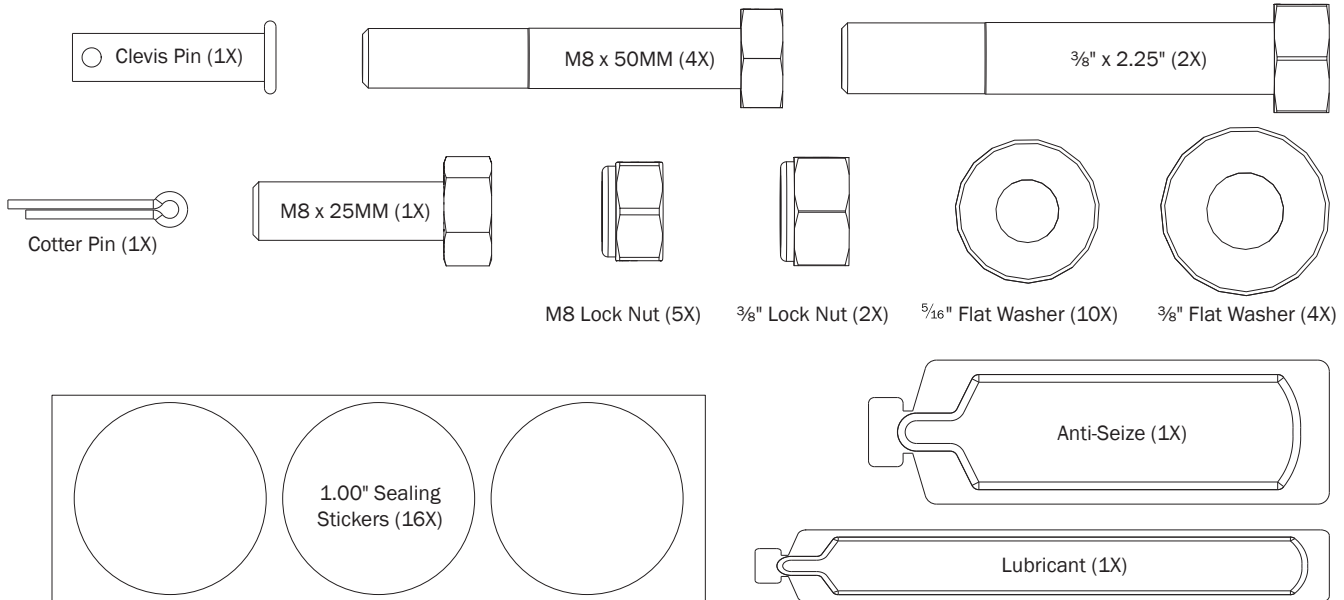
8—Z Post (Qty 2)
Adjustable, 7.25"



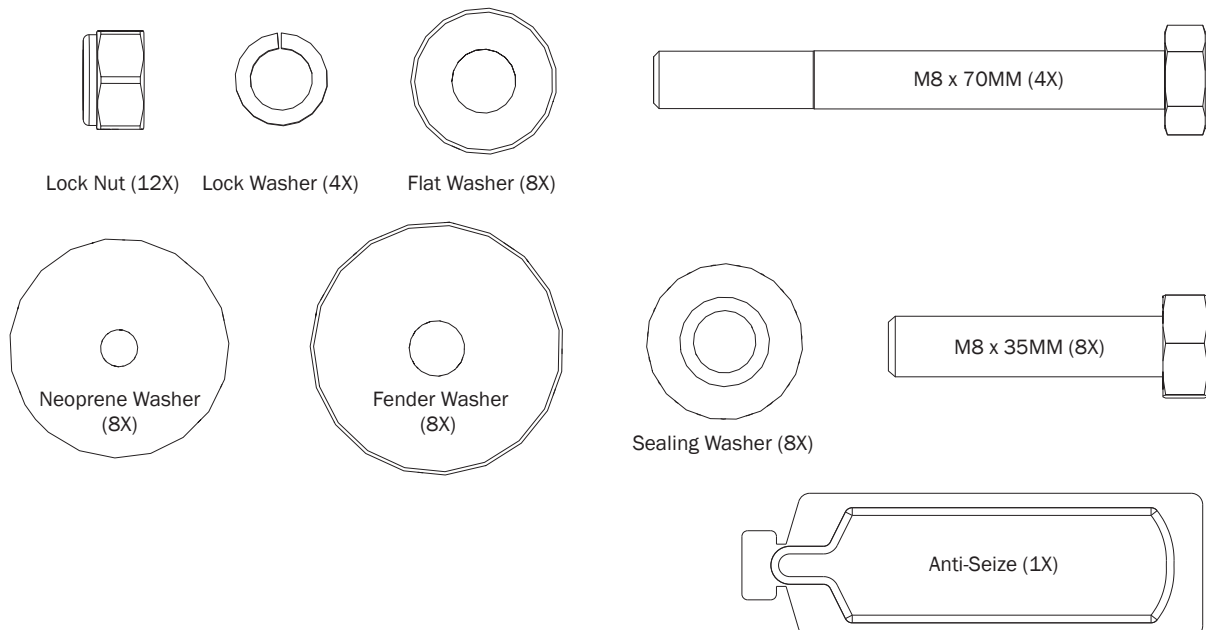
9—L Post (Qty 2)
9.25"



HKT-8163-Rotation Hardware Kit

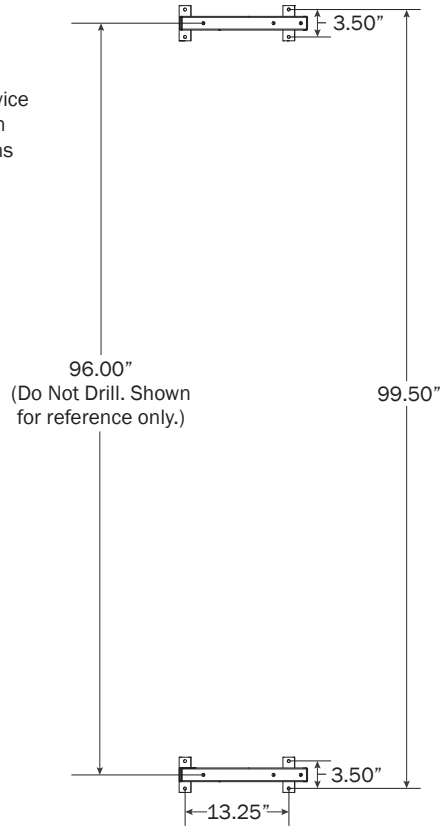


HKT-0122 Mounting Hardware Kit



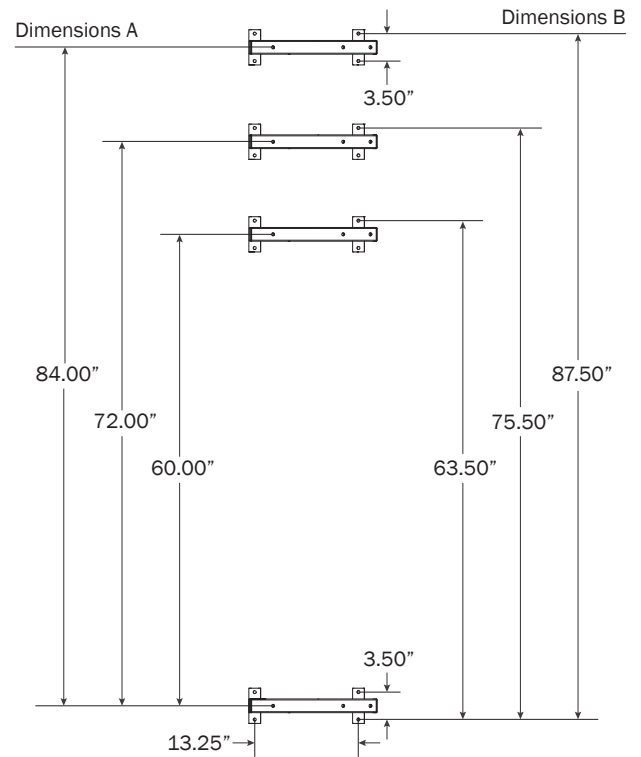
UTB-2316 MOUNTING BRACKETS
BRACKET PRE-ASSEMBLY**0.1**

Drill holes into the Service Body mounting location according to dimensions shown for 8.00 ft rack configuration.

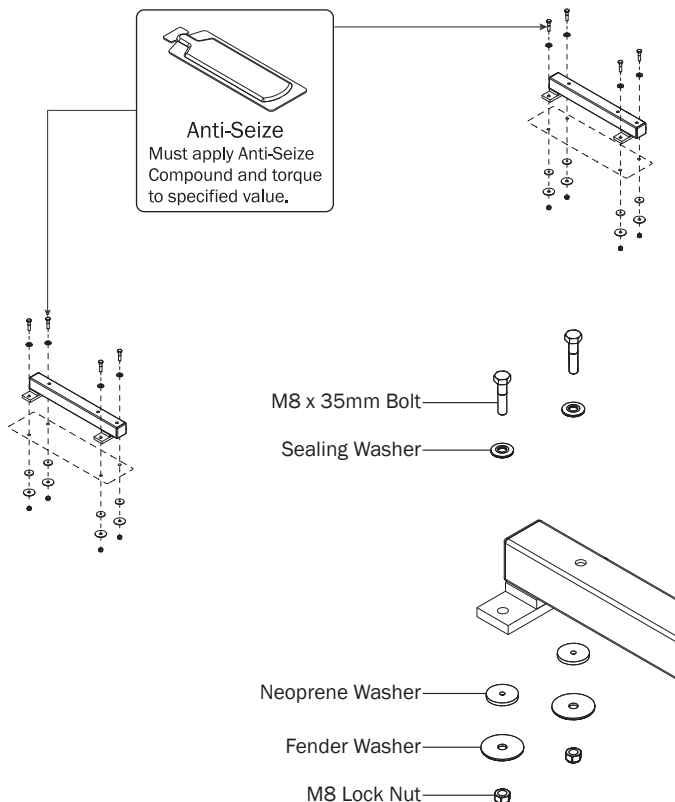
**0.2**

Dimensions shown below are for 5' (60.00"), 6' (72.00"), and 7' (84.00") spacing.

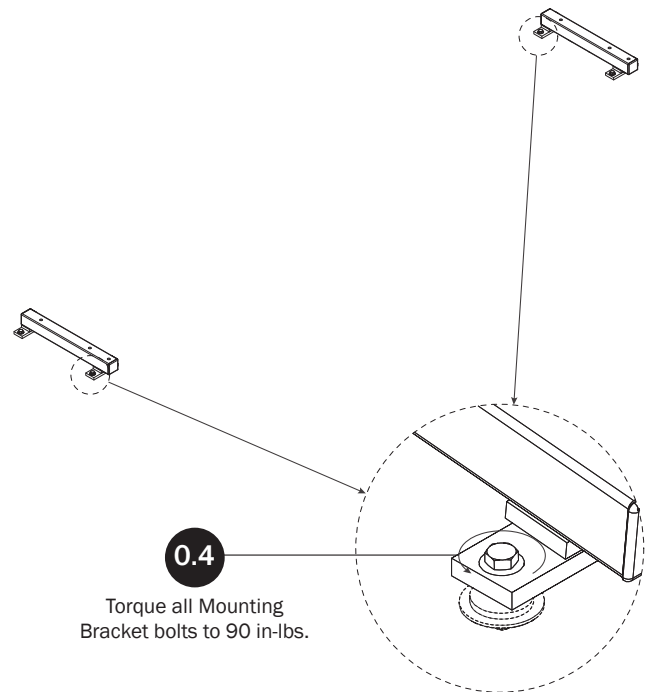
Dimensions A are measured from center to center of top Mounting Rail. Dimensions B are measured from outside Bracket Hole to outside Bracket Hole.

**0.3**

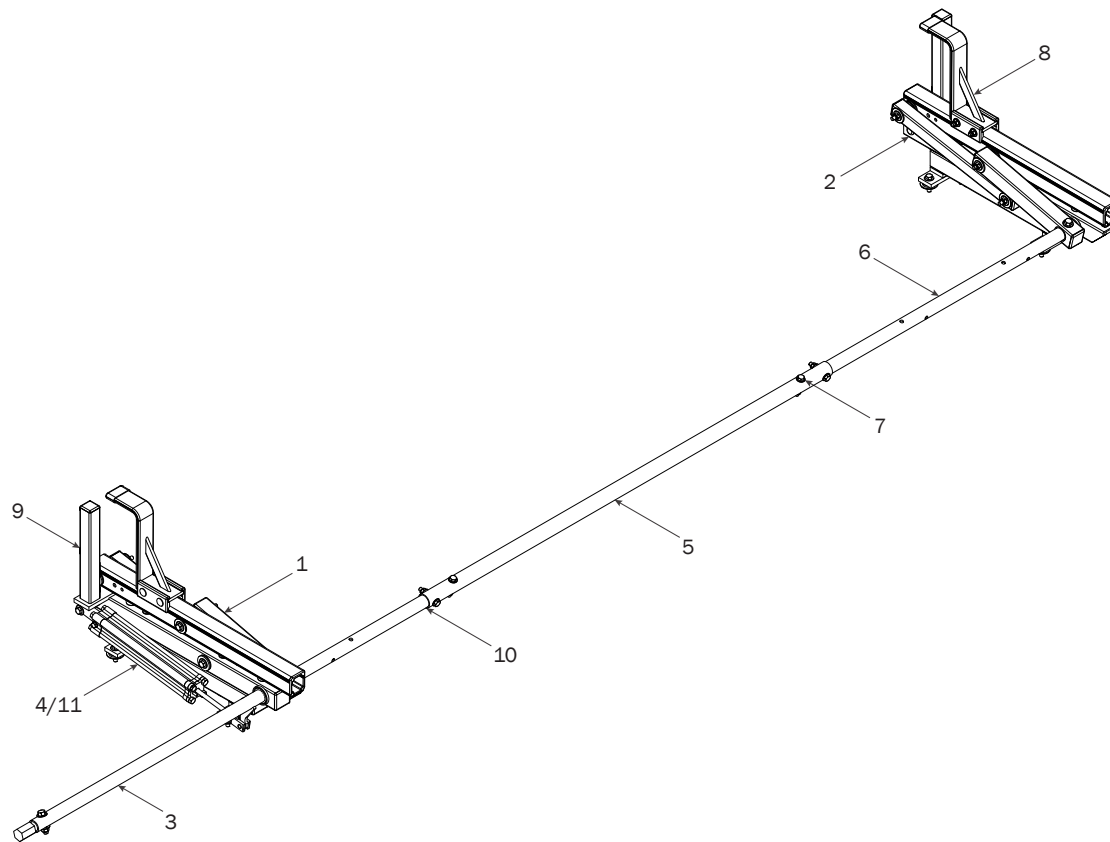
Apply Anti-Seize compound to Mounting Bracket bolts. The shorter bolt assemblies are on the outside as shown.

**0.4**

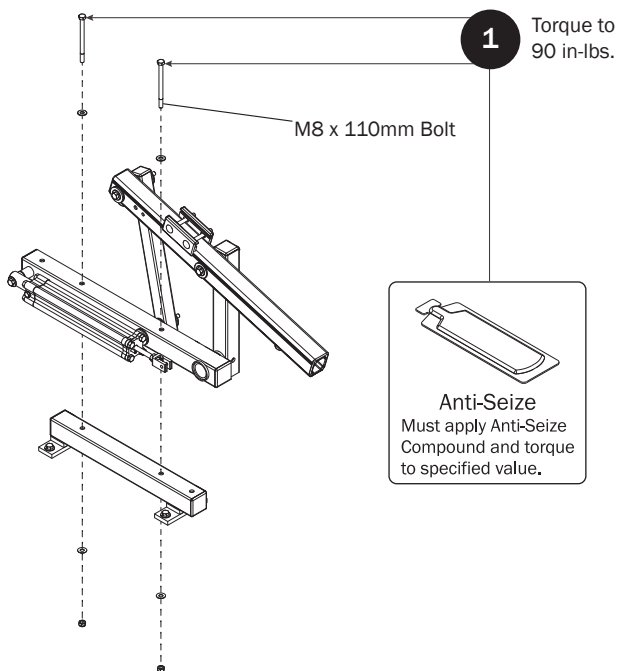
Torque all Mounting Bracket bolts to 90 in-lbs.



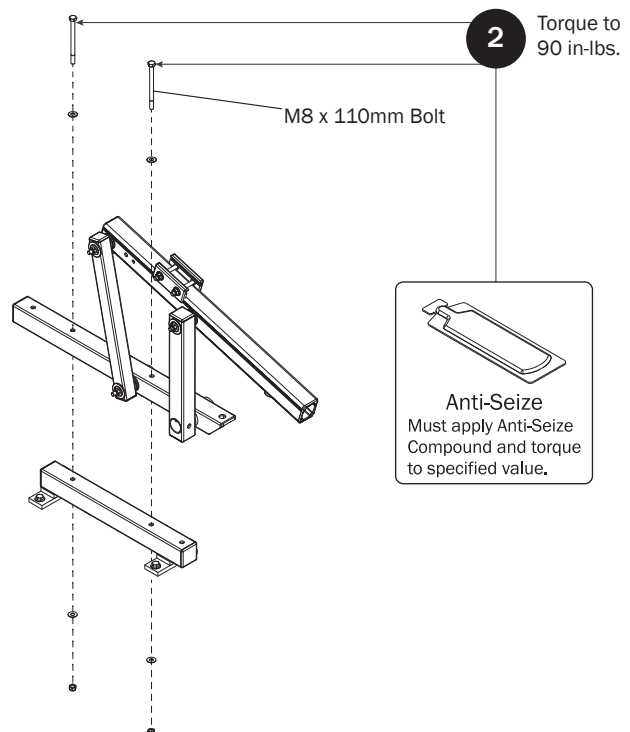
RIGHT ROTATION ASSEMBLY SEQUENCE



REAR ROTATION ASSEMBLY

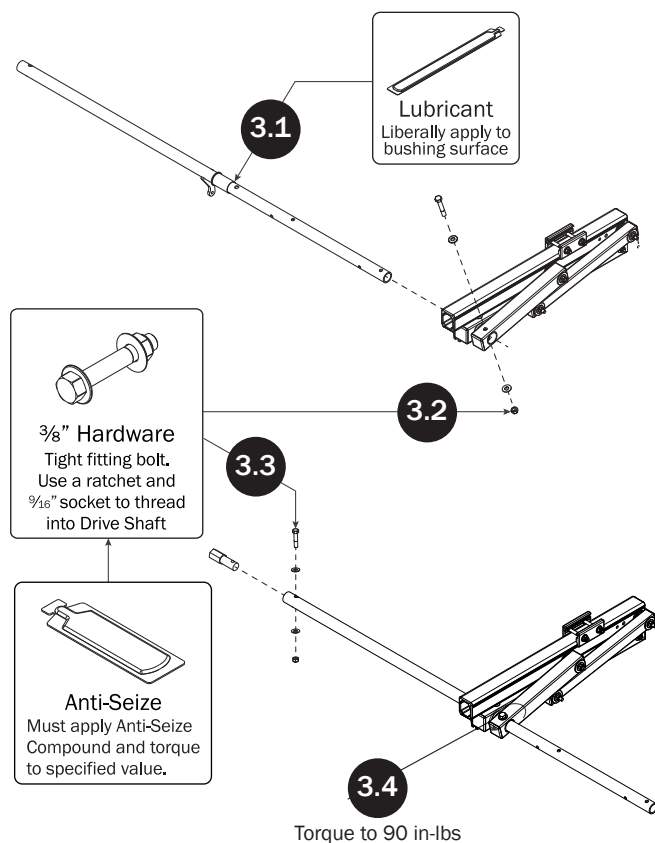
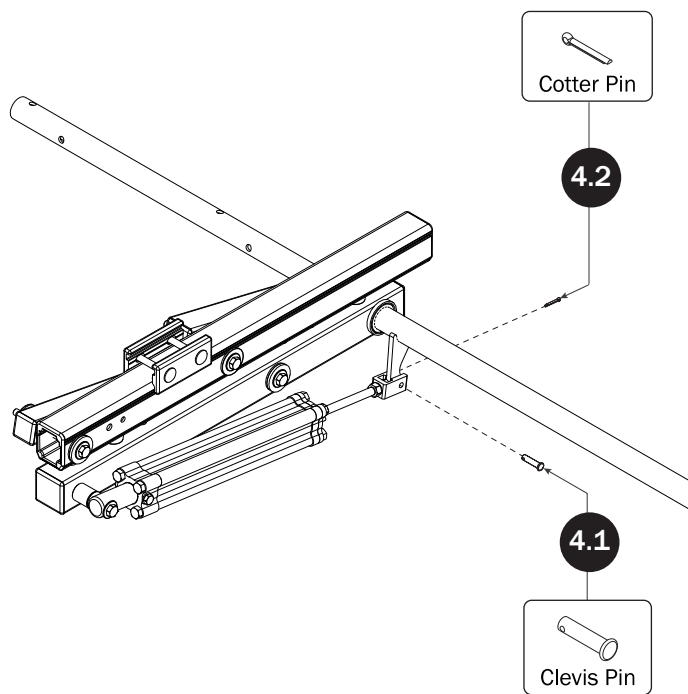
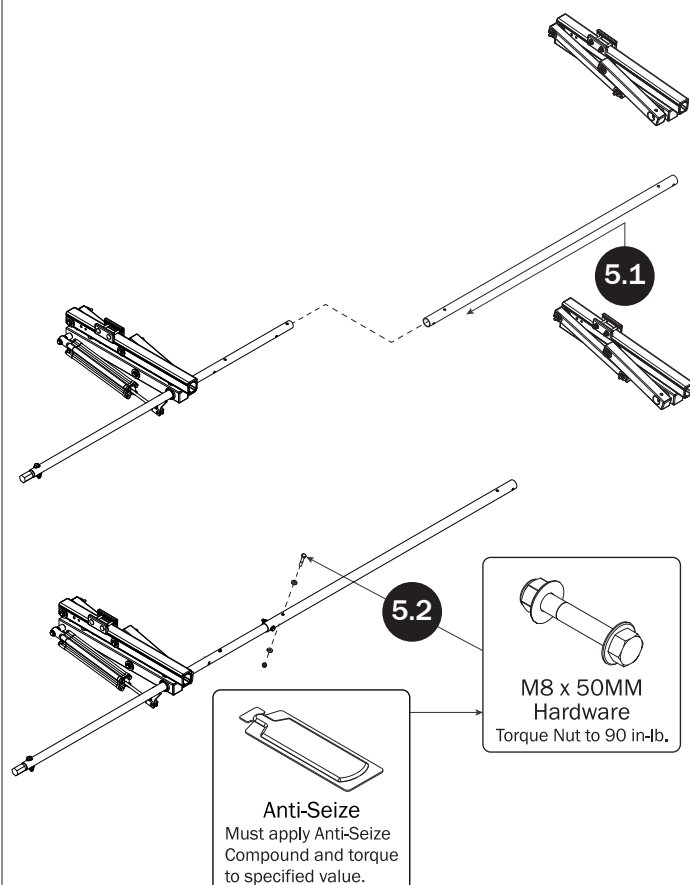
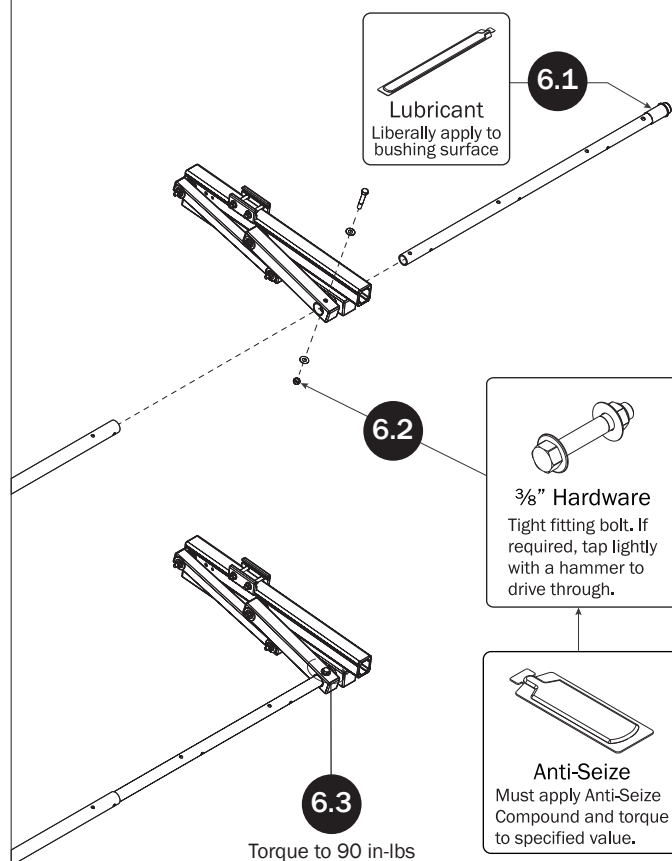


FRONT ROTATION ASSEMBLY

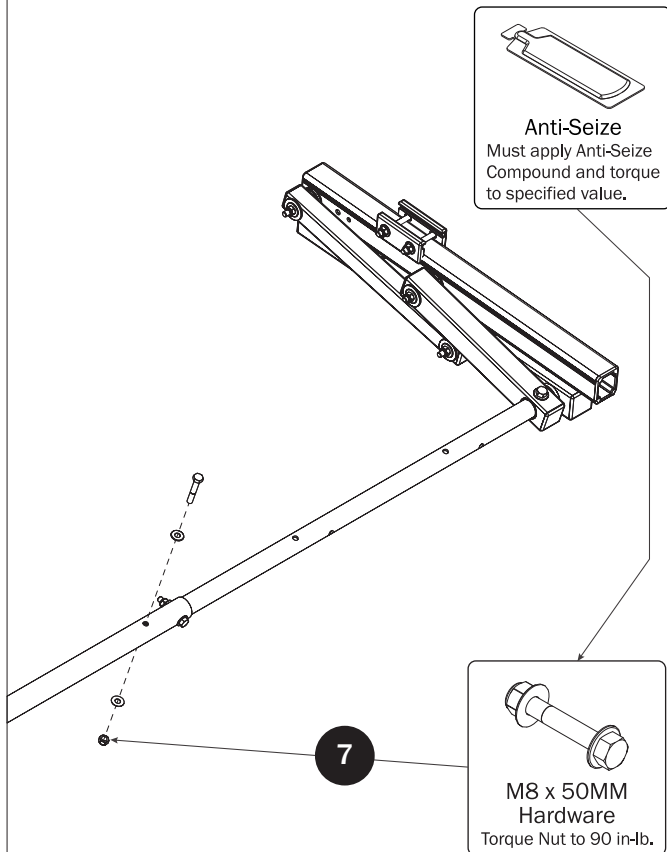


REAR DRIVE SHAFT

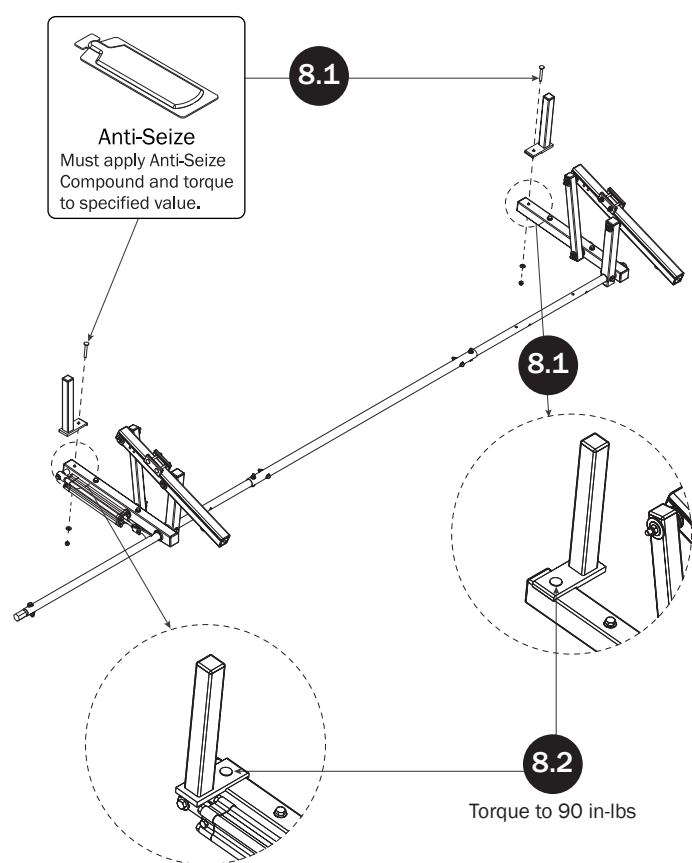
NOTE: For instructional clarity, the Mounting System will not be shown for the remainder of this Assembly Manual.

**CYLINDER HARDWARE****CONNECTING BAR****FRONT DRIVE SHAFT**

CONNECTING BAR FASTENERS

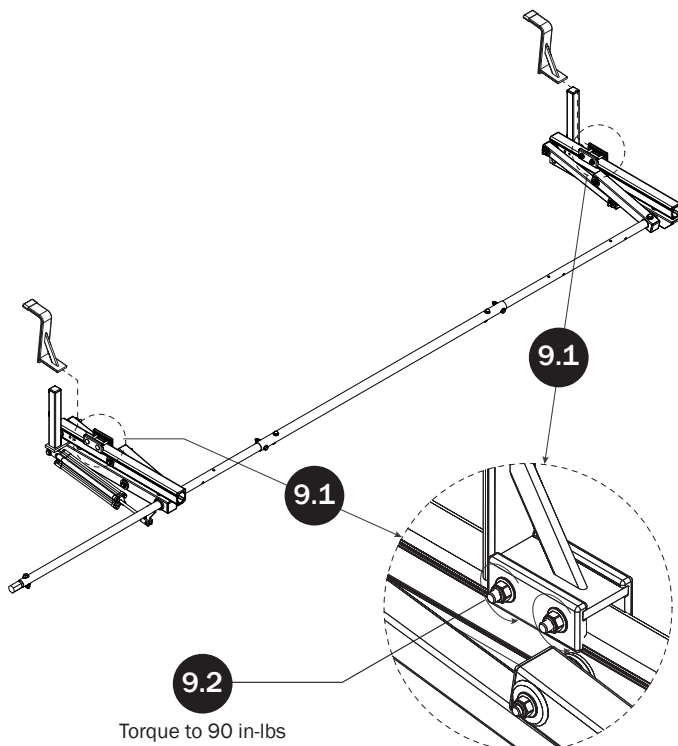


L POSTS

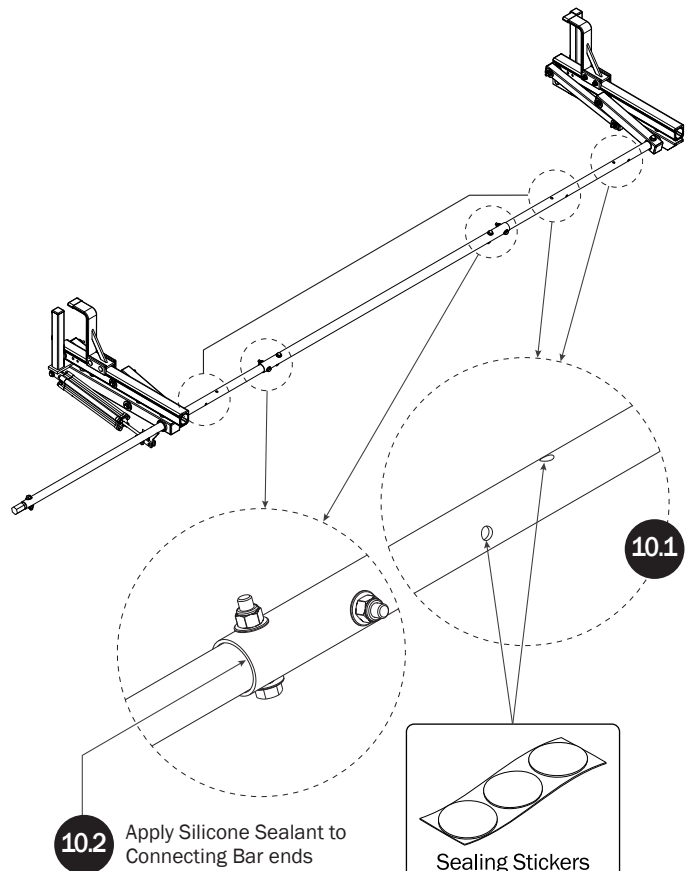


Z POSTS

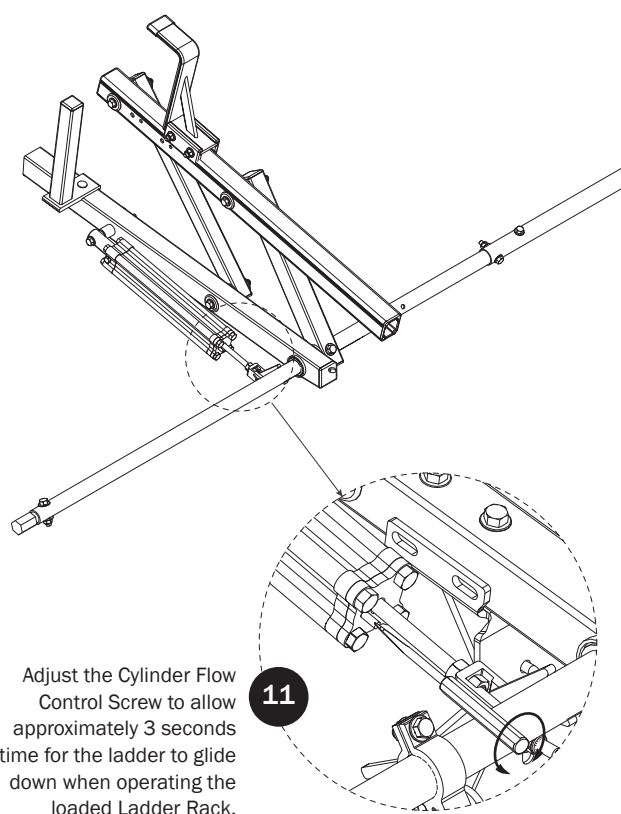
SEE QUICK START GUIDE FOR ADJUSTMENTS



DRIVE SHAFT SEALING



CYLINDER ADJUSTMENT



Adjust the Cylinder Flow Control Screw to allow approximately 3 seconds time for the ladder to glide down when operating the loaded Ladder Rack.

11

USAM-UXR0010-US01 Rev-A 0420