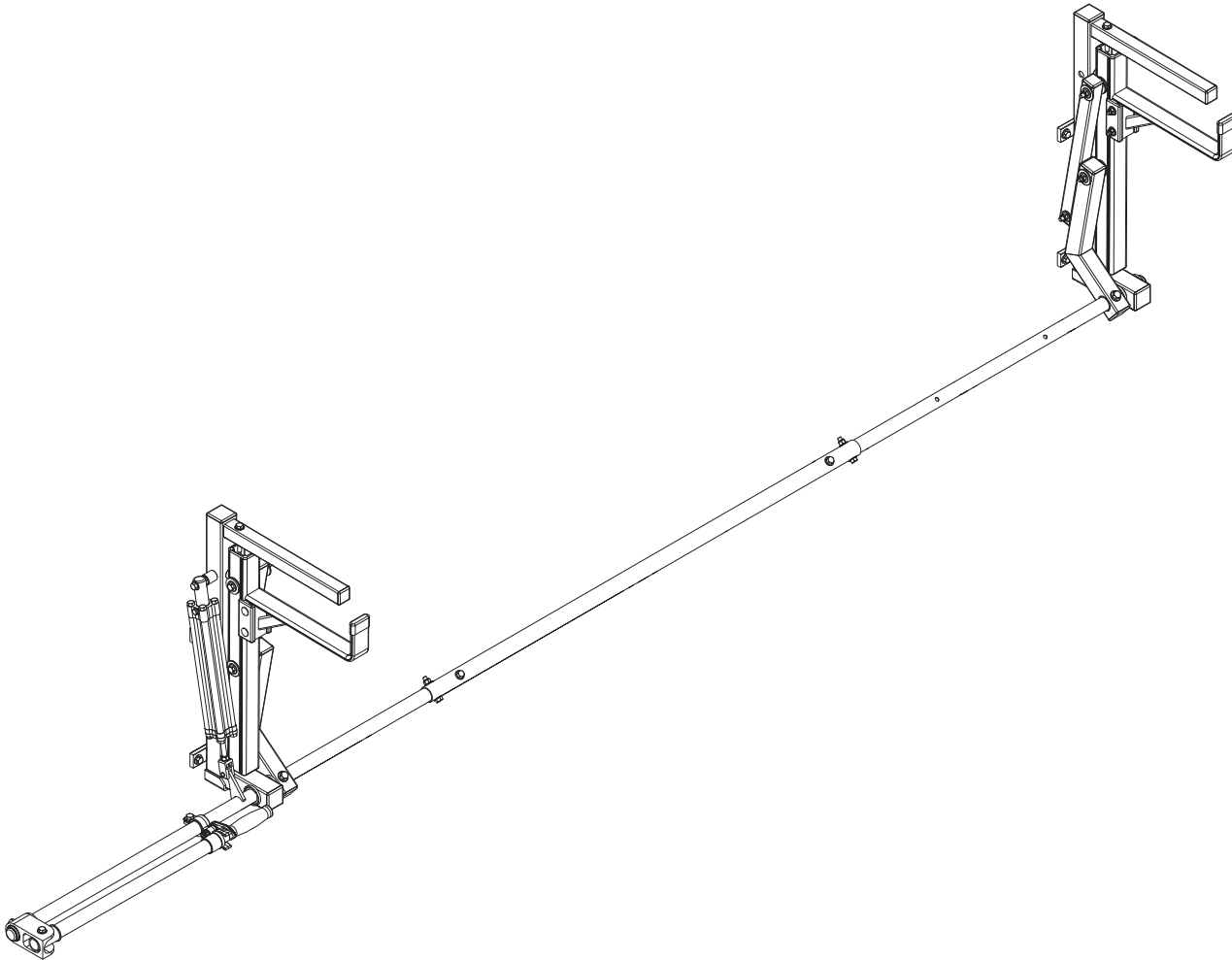


PRIME DESIGN™

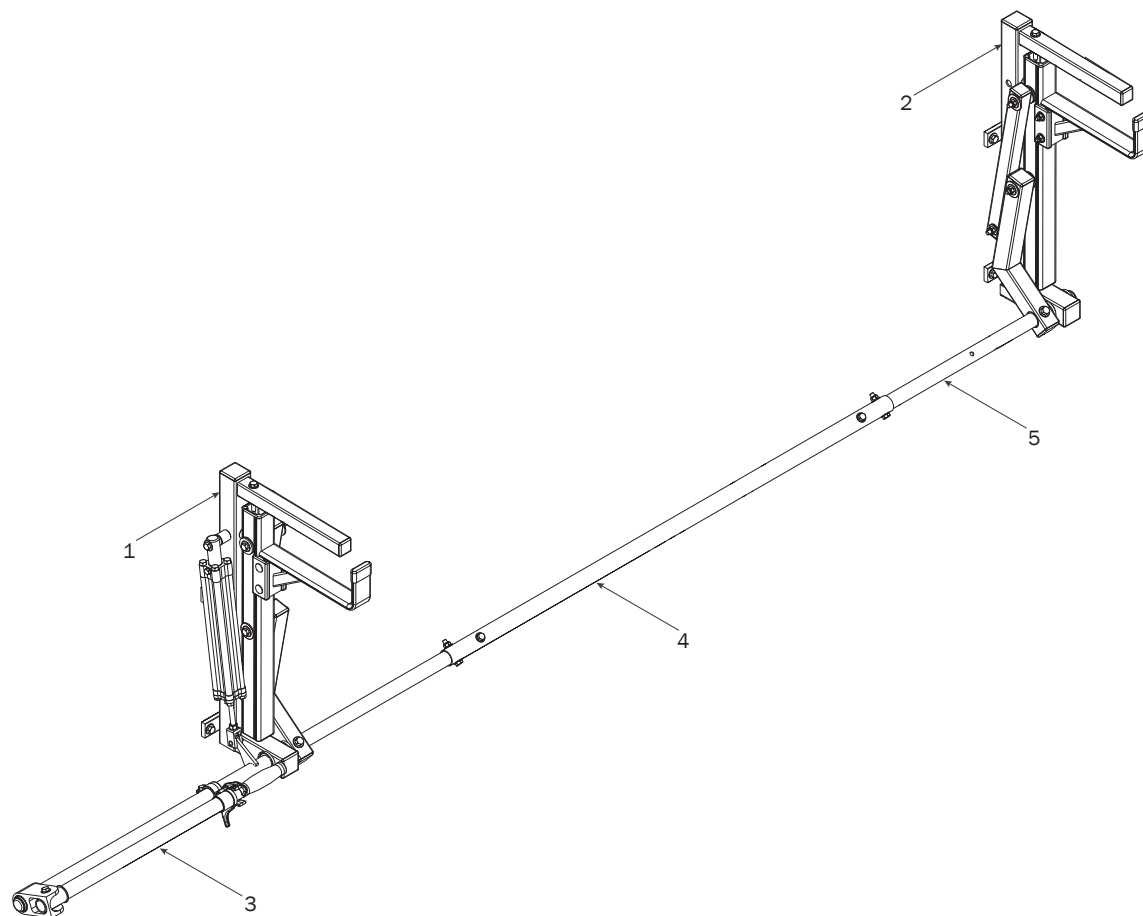
A Safe Fleet Brand



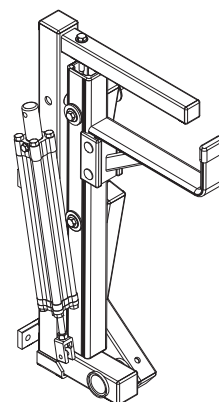
UXV-211

PRIME DESIGN, A SAFE FLEET BRAND

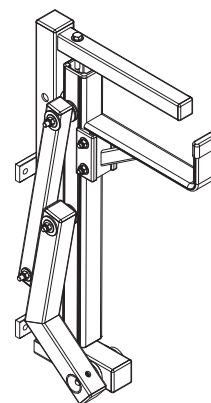
Address: 580 Opperman Drive, Eagan, MN 55123 • Toll Free: 1.8.PRIME.RACK
Fax: 651-552-1799 • Email: info@primedesign.net • Website: www.primedesign.net



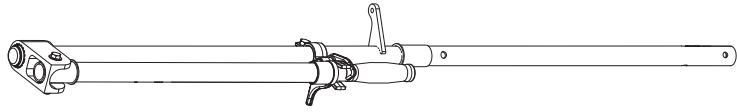
1—Rear Rotation Assembly..... (Qty 1)



2—Front Rotation Assembly..... (Qty 1)



3—Rear Drive Shaft..... (Qty 1)
Left Hand, 50.00"



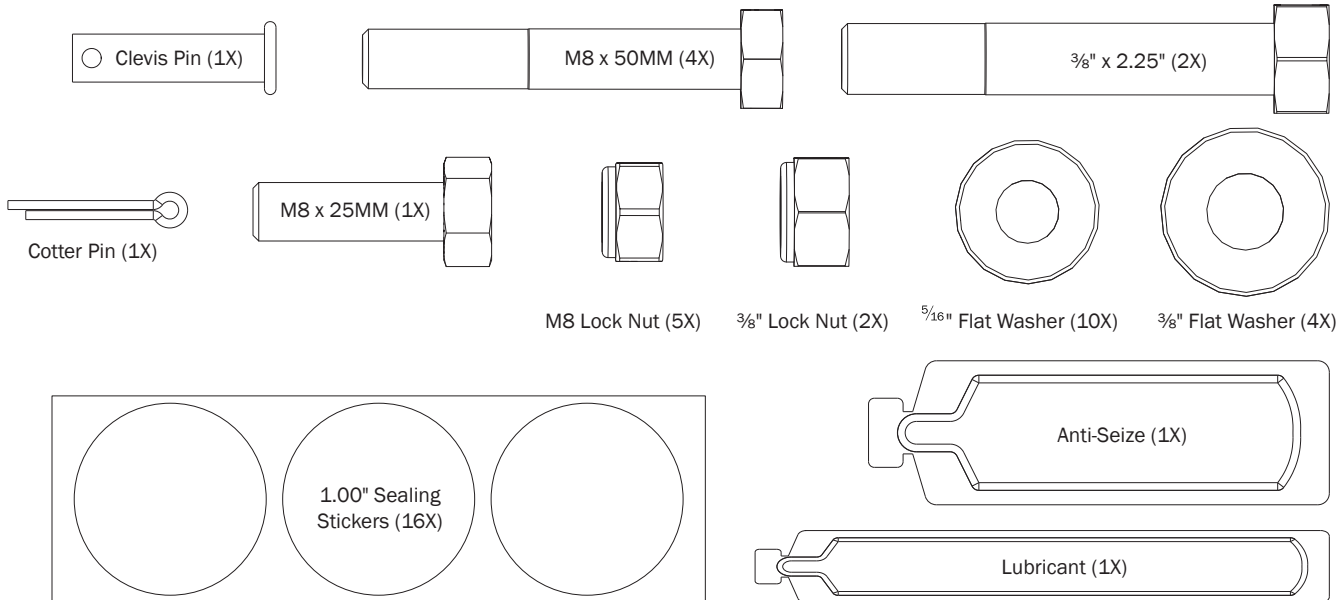
4—Connecting Bar..... (Qty 1)
48.00"



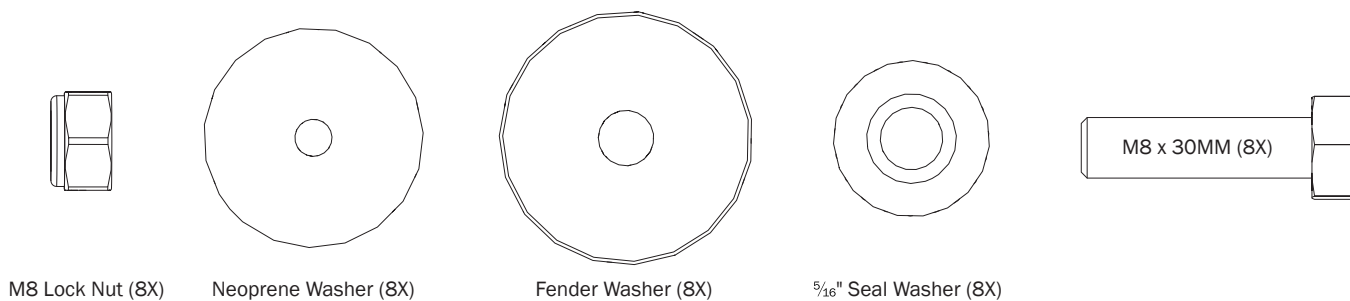
5—Front Drive Shaft..... (Qty 1)
B Version, 35.75"



HKT-8163-Rotation Hardware Kit

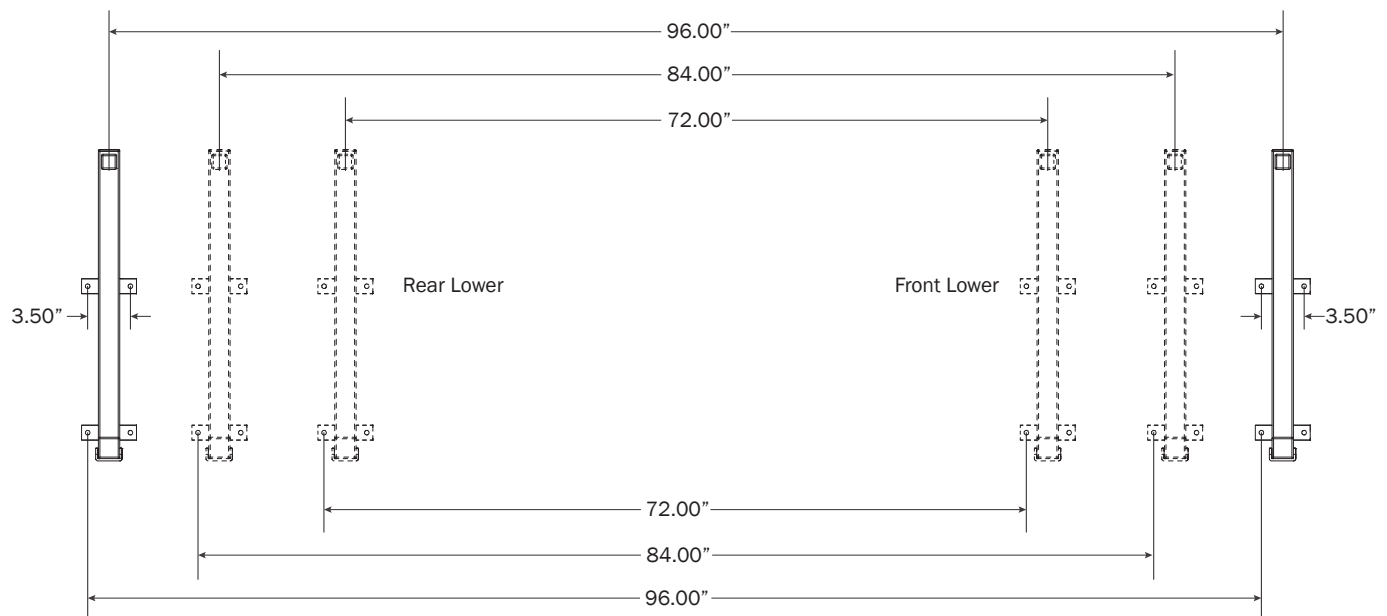


Mounting Hardware



UTILITY BODY MOUNTING

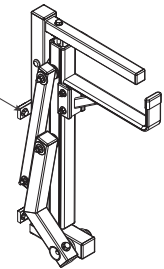
- 0.1** 6.00-8.00 Ft: Drill holes into the Service Body mounting location according to dimensions shown.



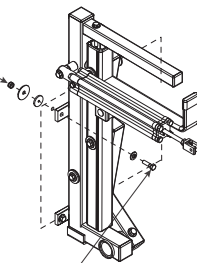
- 0.2** Position and align the vertical Uprights until the mounting holes realign to the body holes drilled during Steps 0.1.

0.3

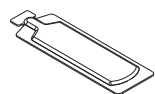
Using the fastening hardware shown below, attach the vertical Uprights to the Utility Body. The Neoprene Washer, Fender Washer, and Locknut install from the inside of the Utility Body in the order shown, while the Bolt and Seal Washer install from the outside.



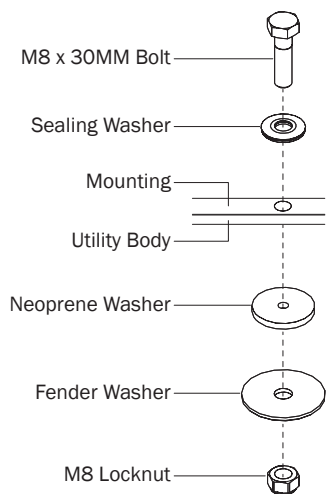
Torque to 90 in-lbs

0.4

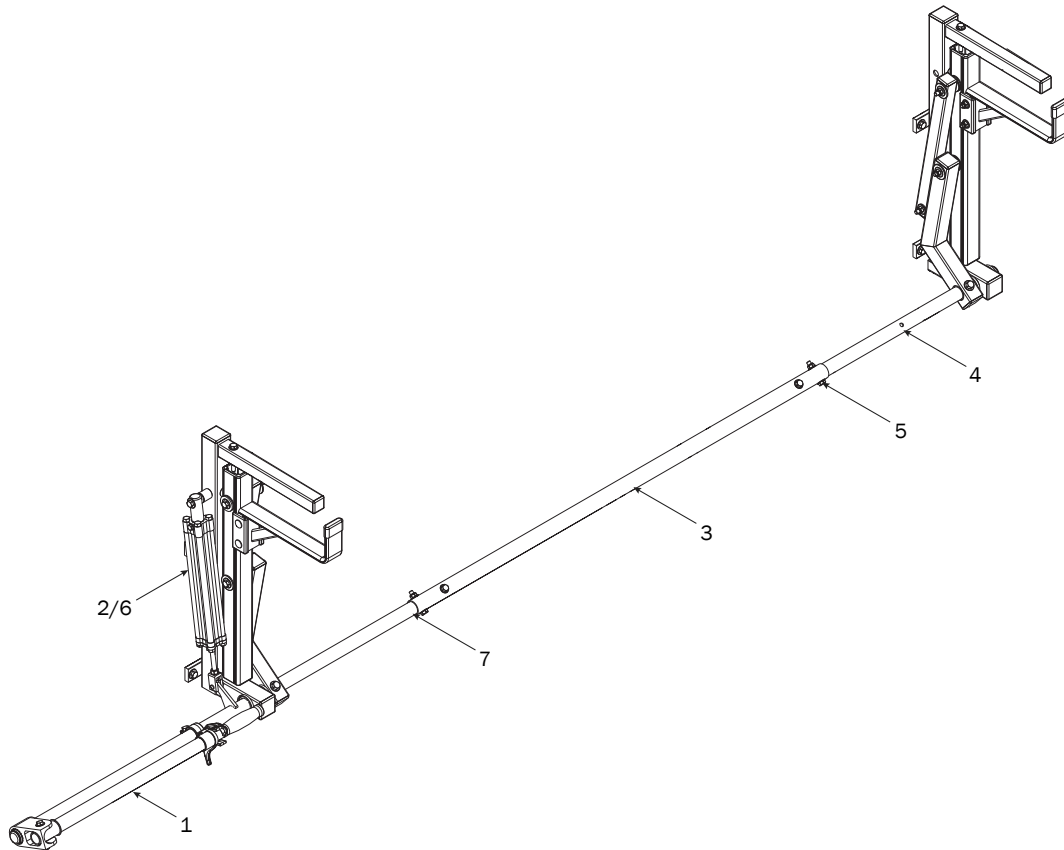
Mounting Hardware (8X)



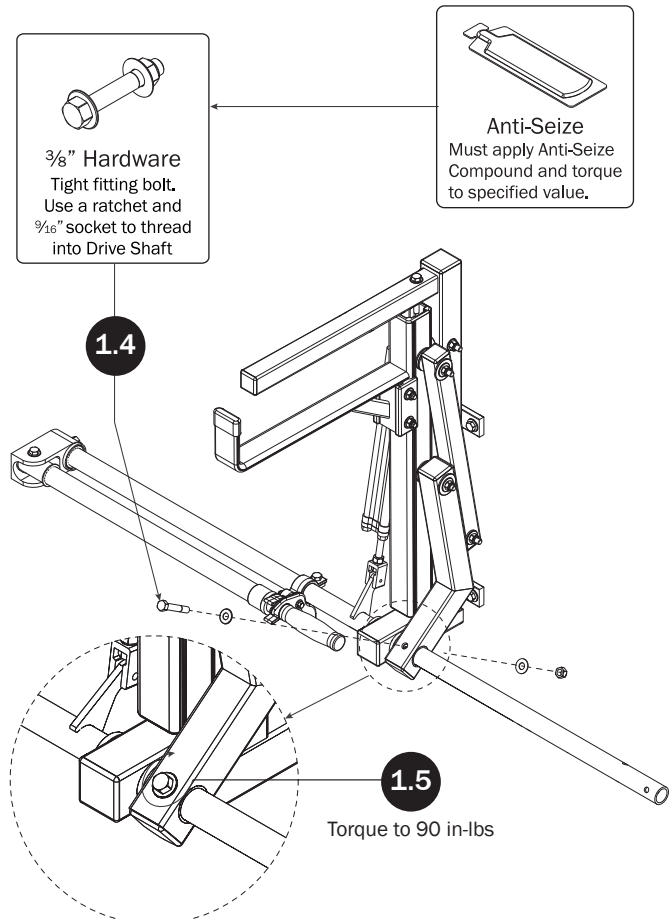
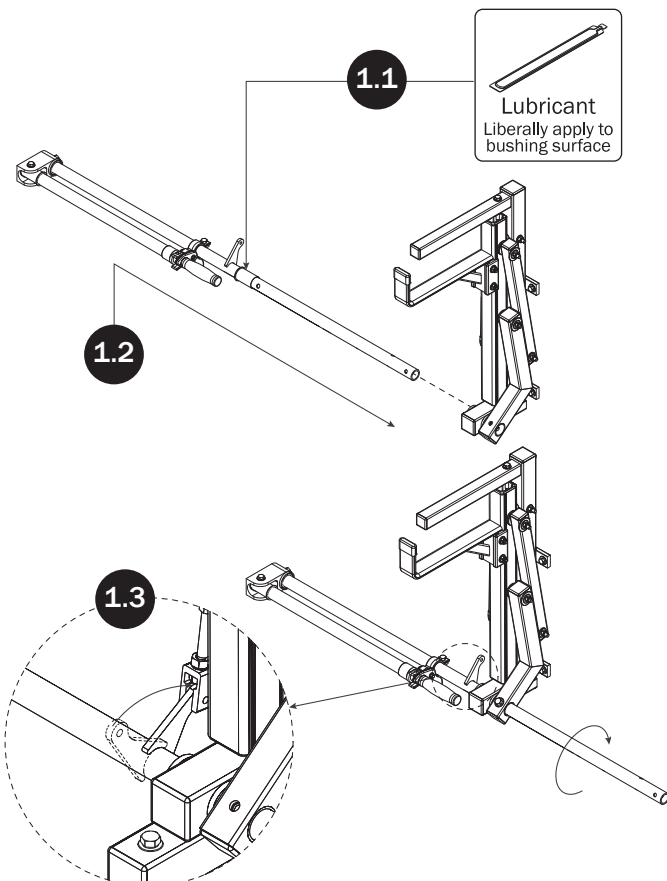
Anti-Seize
Must apply Anti-Seize Compound and torque to specified value.

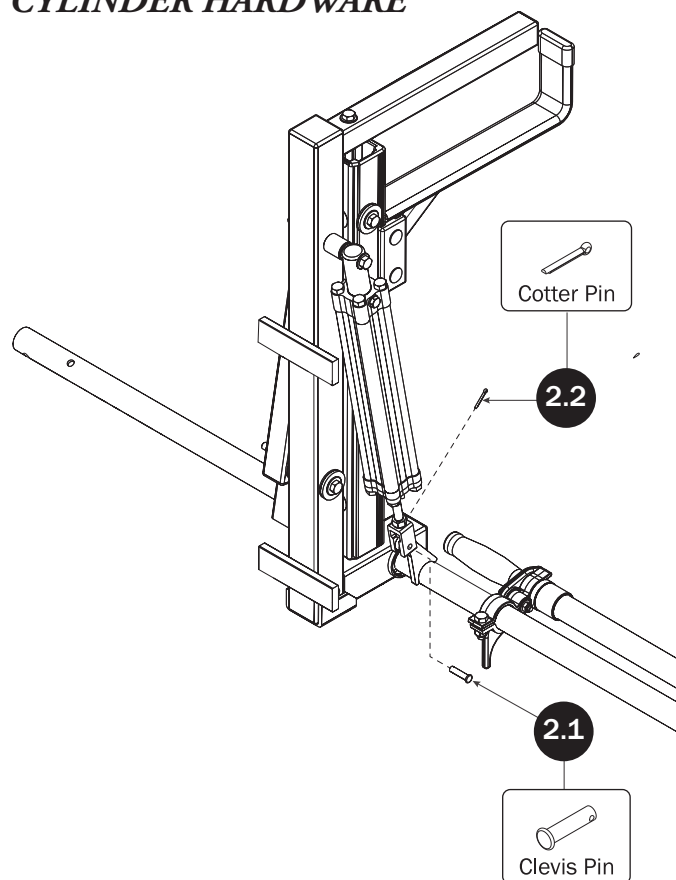
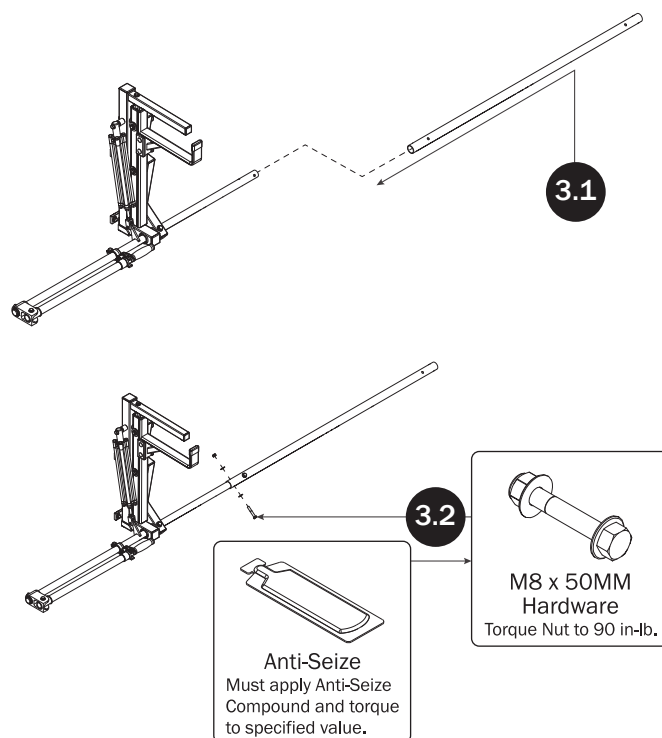
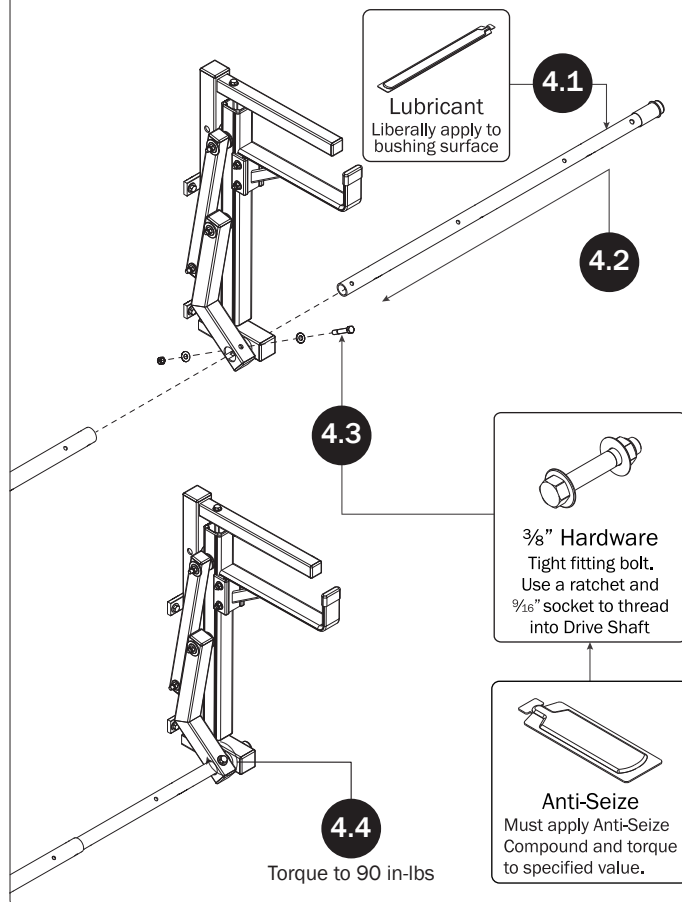
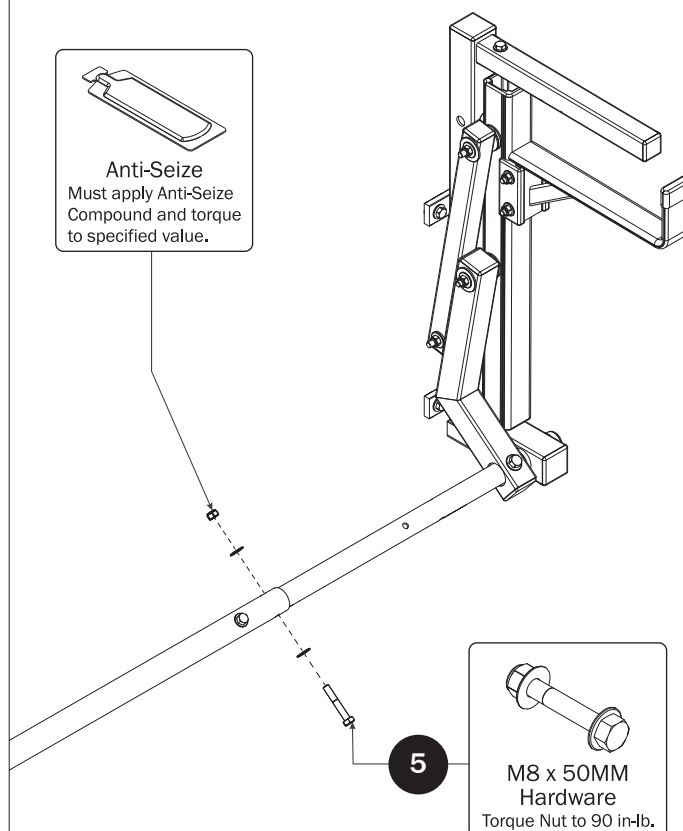


RIGHT ROTATION ASSEMBLY SEQUENCE

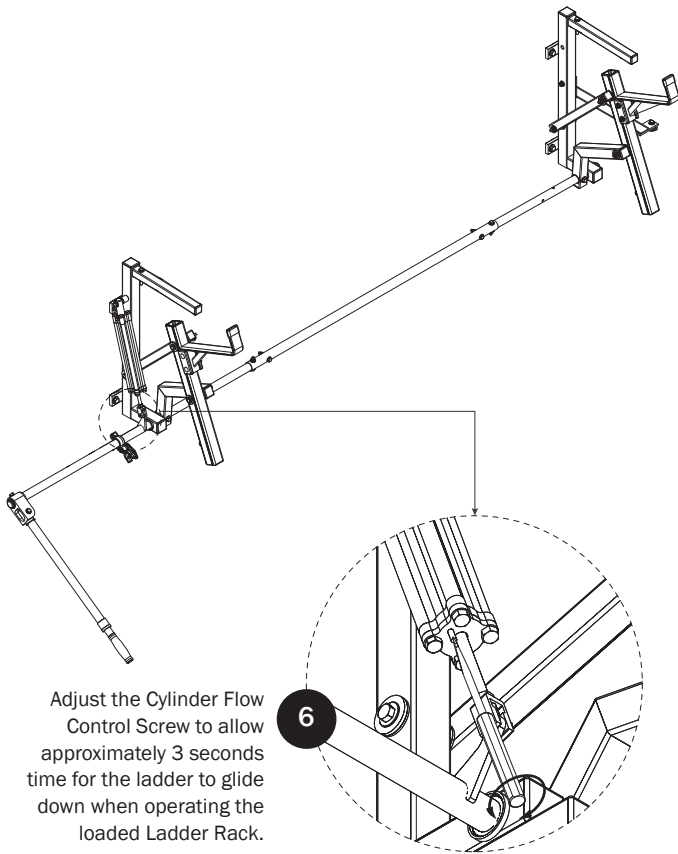


REAR DRIVE SHAFT



CYLINDER HARDWARE**CONNECTING BAR****FRONT DRIVE SHAFT****CONNECTING BAR FASTENERS**

CYLINDER ADJUSTMENT



DRIVE SHAFT SEALING

