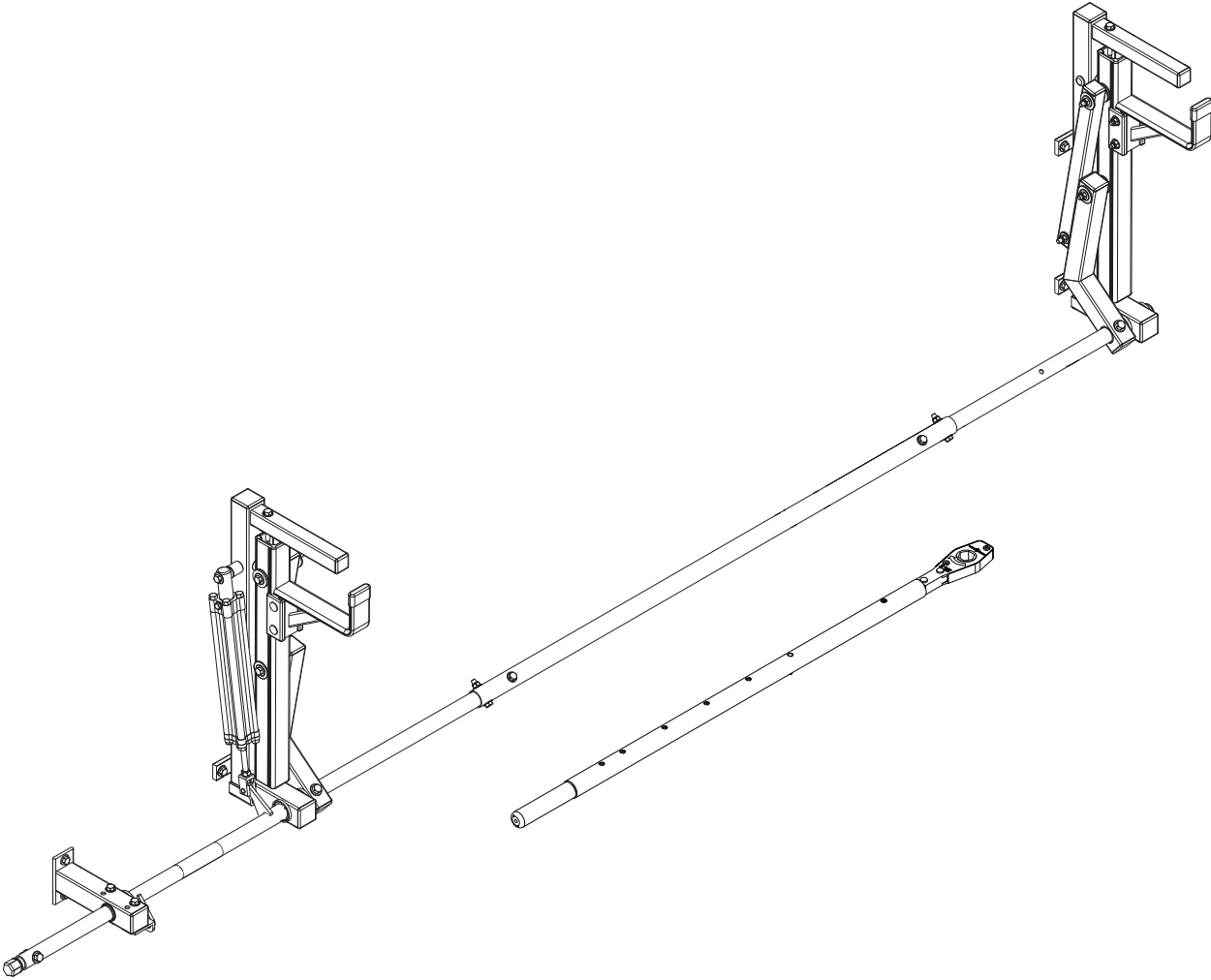


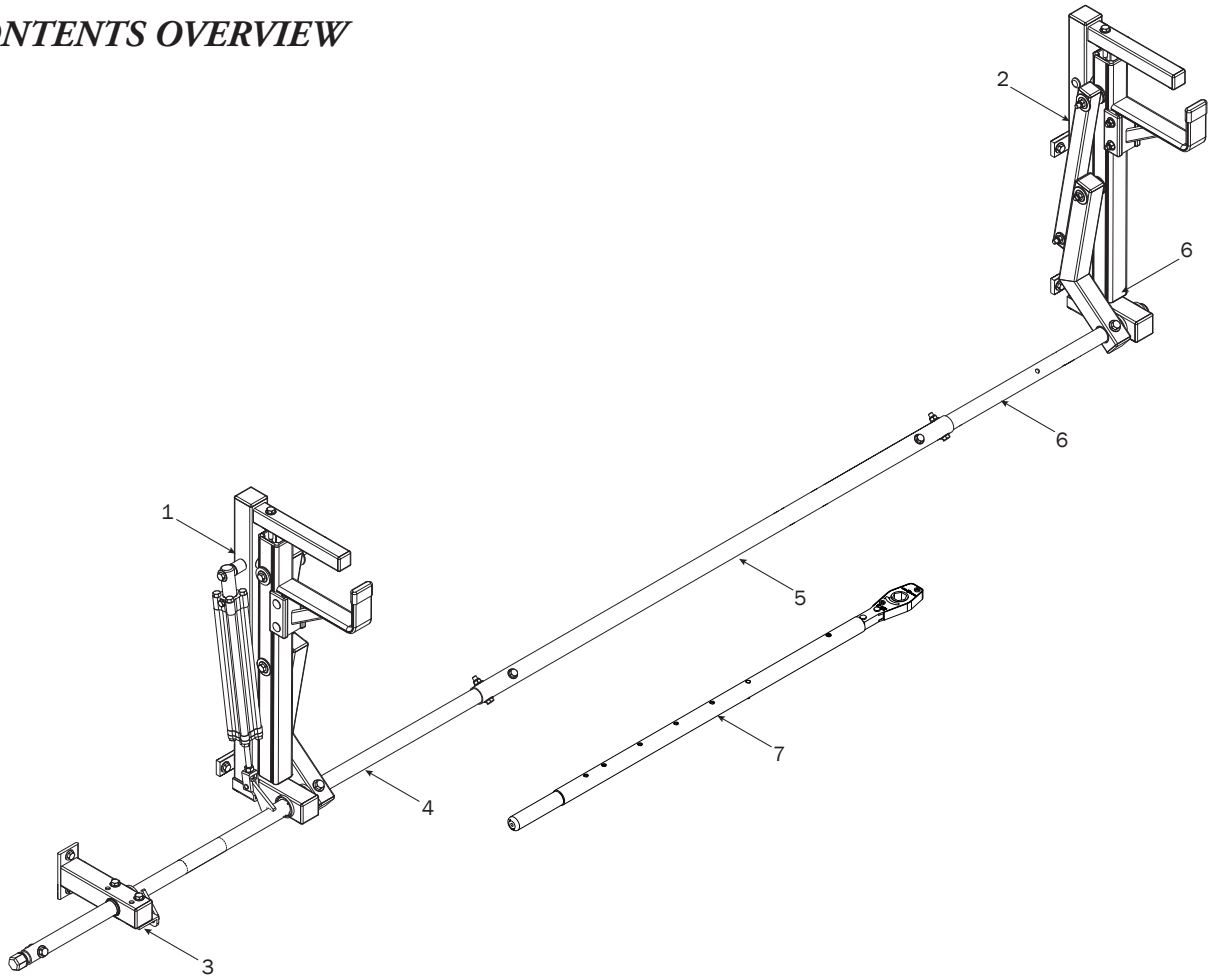
PRIME DESIGN™

A Safe Fleet Brand



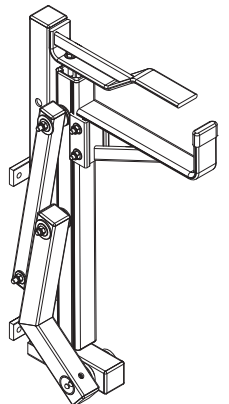
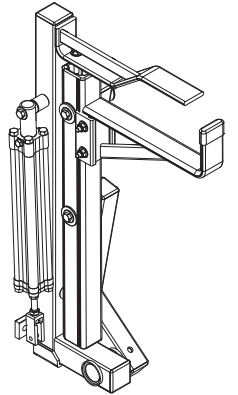
215
UXV

CONTENTS OVERVIEW



1—Rear Rotation Assembly..... (Qty 1)

2—Front Rotation Assembly..... (Qty 1)



3—Vertical Drive Shaft Support..... (Qty 1)
Utility, Right Hand



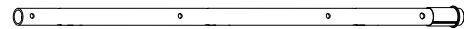
4—Rear Drive Shaft..... (Qty 1)
Hex Drive, 50.00", Label: 75 lb Weight Limit



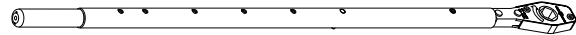
5—Connecting Bar..... (Qty 1)
48.00"



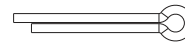
6—Front Drive Shaft..... (Qty 1)
B Version, 35.75"



7—Ratcheting Handle Assembly (Qty 1)
41.00"



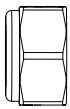
HKT-8144-Hardware Kit



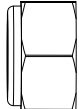
Cotter Pin (1X)



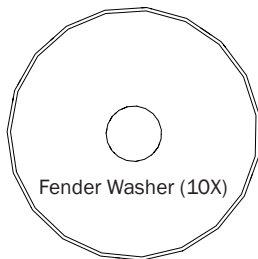
Clevis Pin (1X)



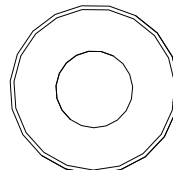
M8 Lock Nut (14X)



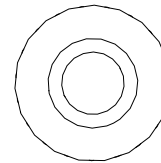
3/8" Lock Nut (3X)



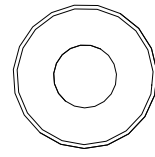
Fender Washer (10X)



3/8" Flat Washer (6X)



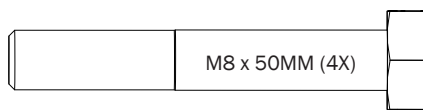
5/16" Seal Washer (10X)



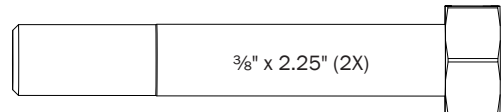
5/16" Flat Washer (8X)



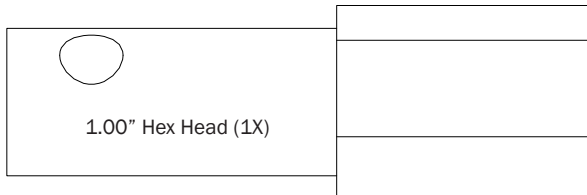
M8 x 30MM (10X)



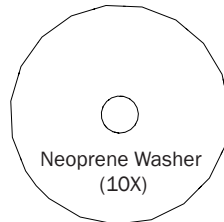
M8 x 50MM (4X)



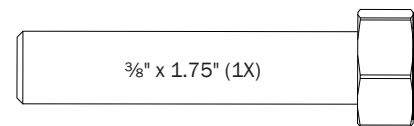
3/8" x 2.25" (2X)



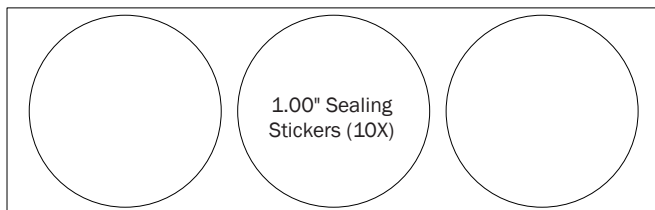
1.00" Hex Head (1X)



Neoprene Washer (10X)



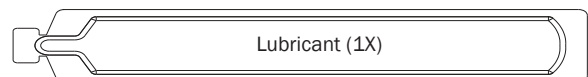
3/8" x 1.75" (1X)



1.00" Sealing Stickers (10X)

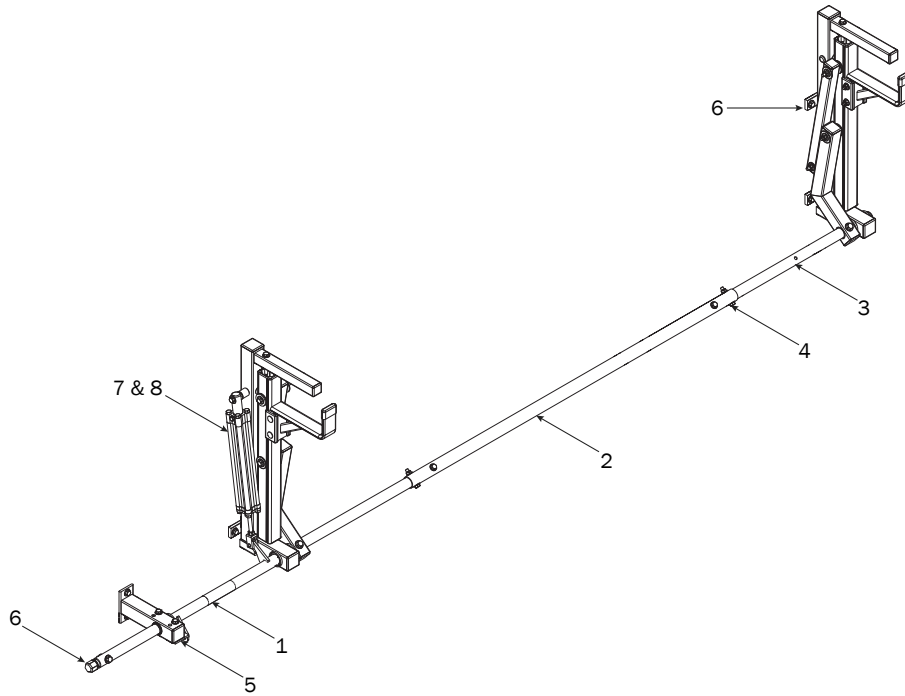


Anti-Seize (1X)

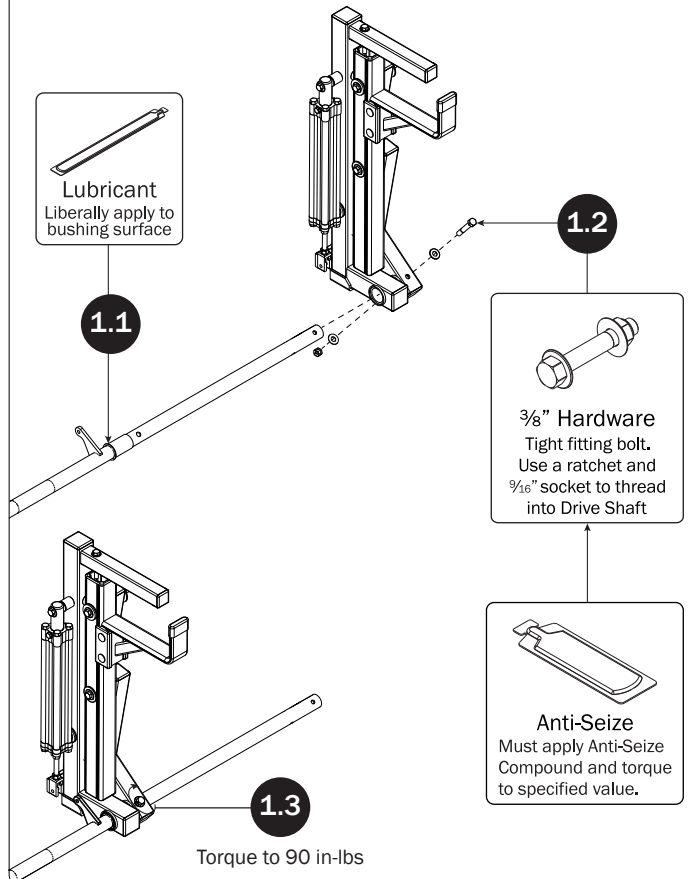


Lubricant (1X)

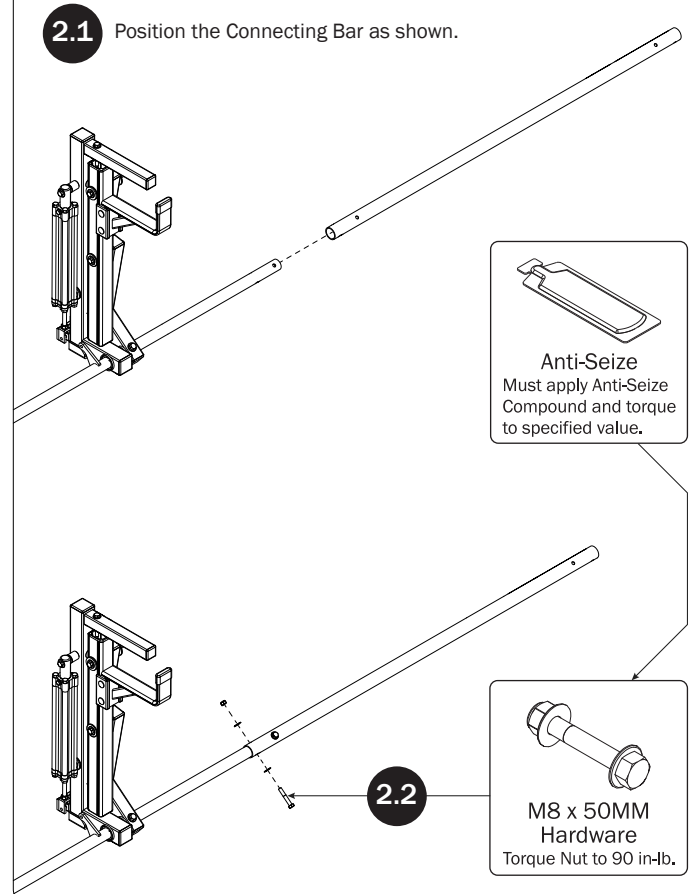
RIGHT ROTATION ASSEMBLY SEQUENCE



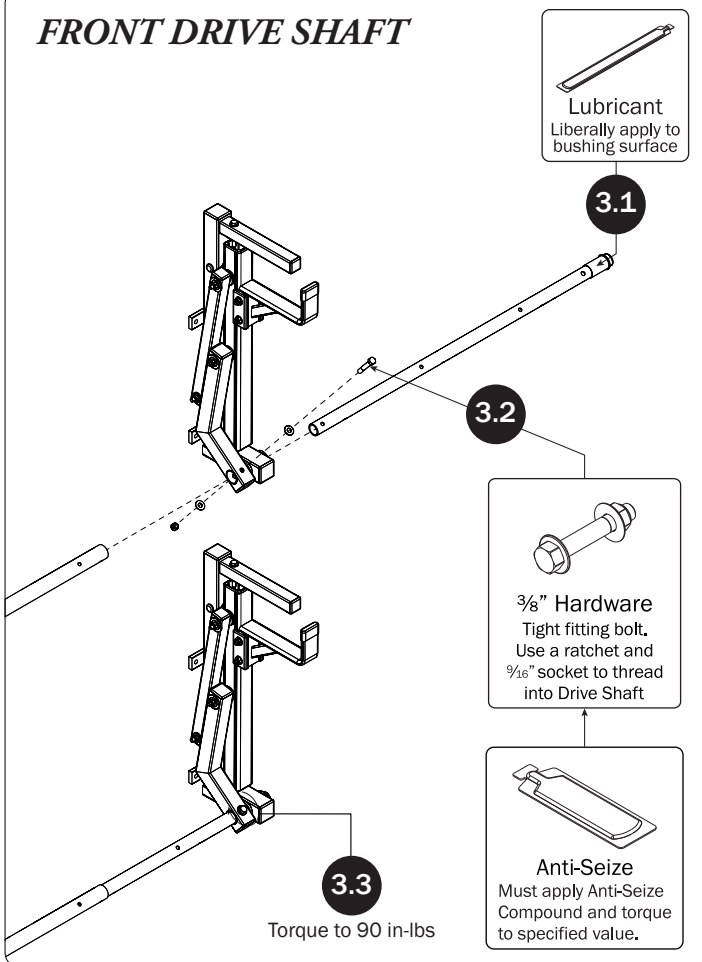
REAR DRIVE SHAFT



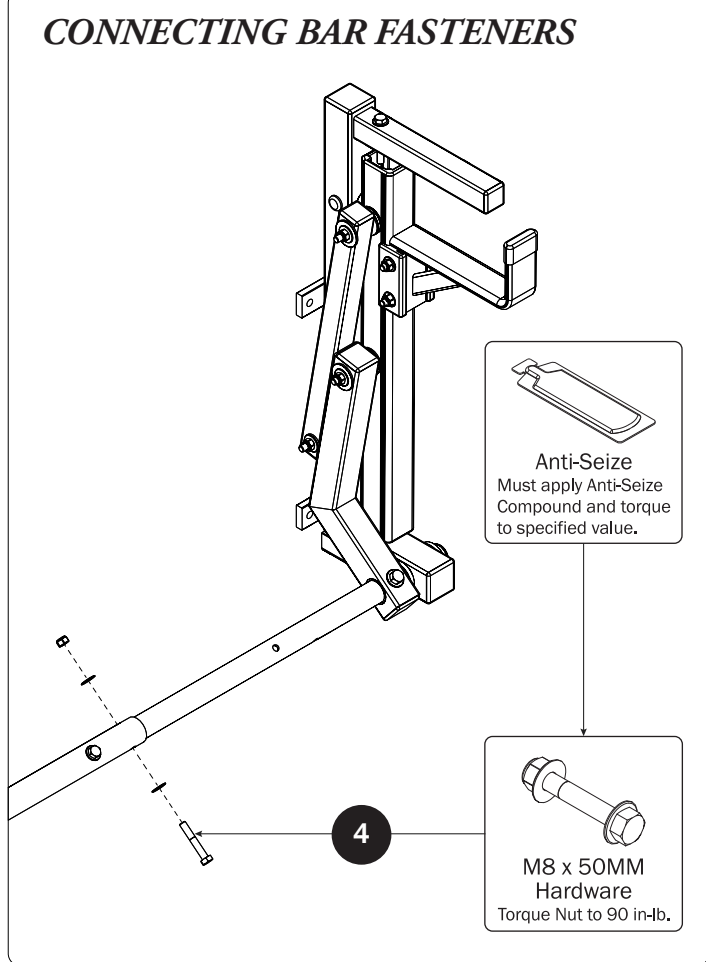
CONNECTING BAR—48"



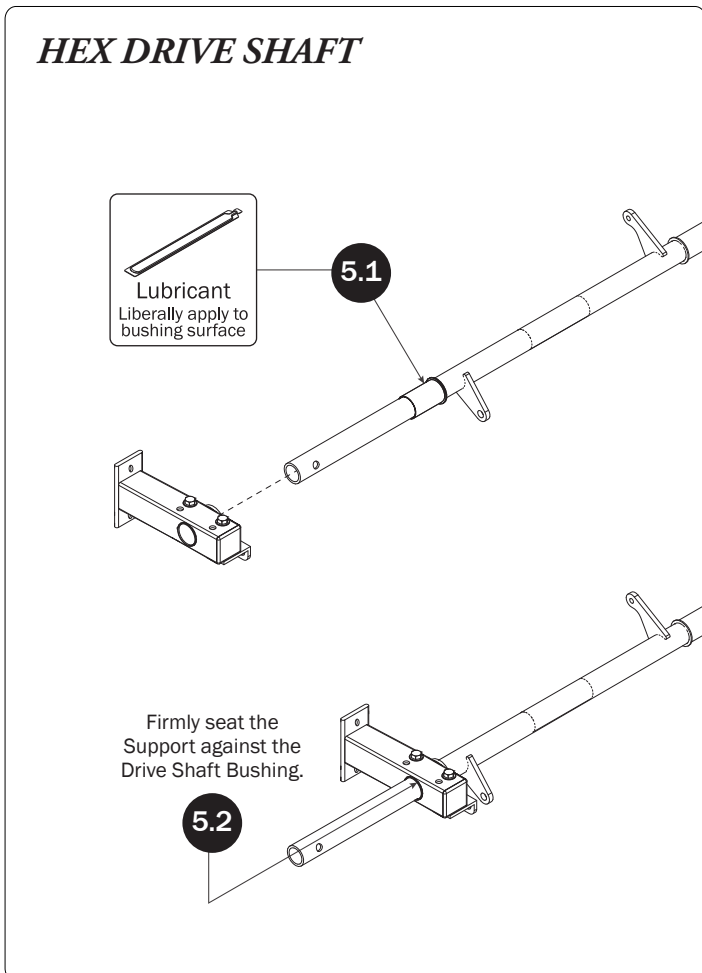
FRONT DRIVE SHAFT



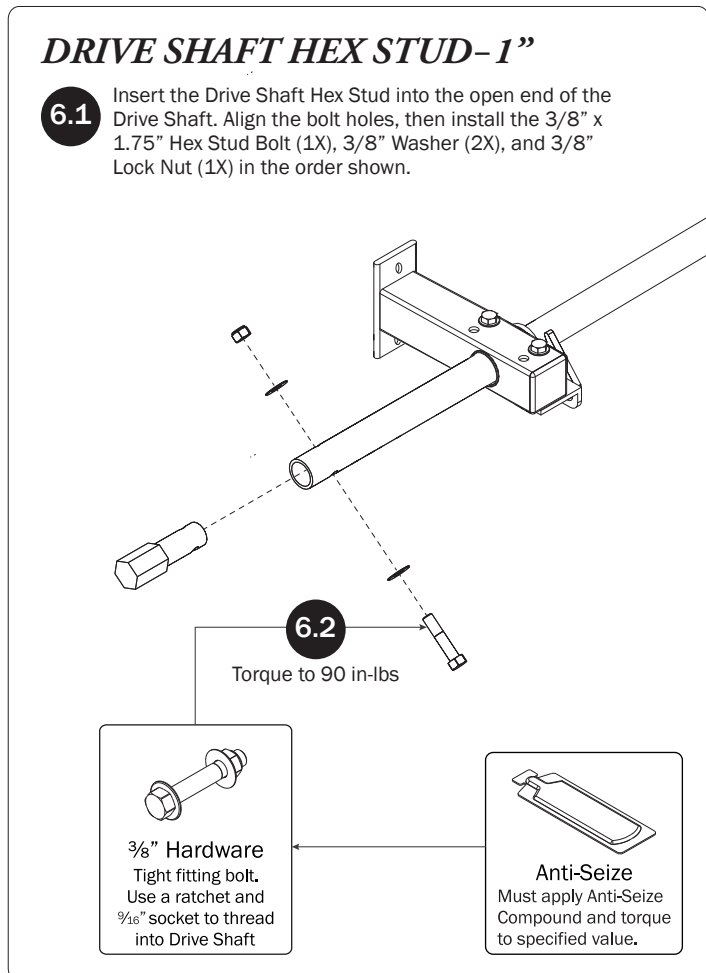
CONNECTING BAR FASTENERS



HEX DRIVE SHAFT



DRIVE SHAFT HEX STUD-1"

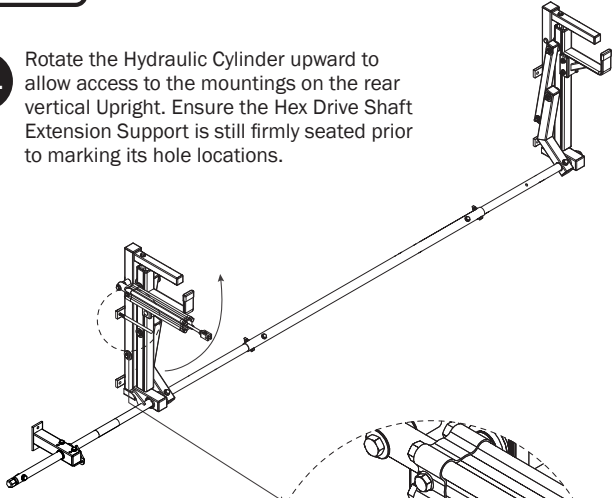


MOUNTING PREPARATION

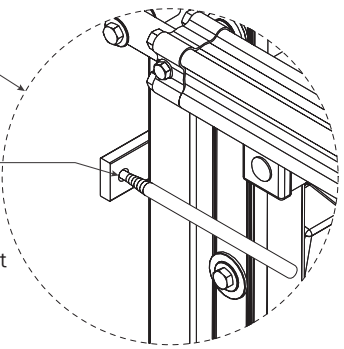


To prevent bodily injury and/or vehicle damage, it is recommended to use two people to safely lift and place the rack onto the vehicle.

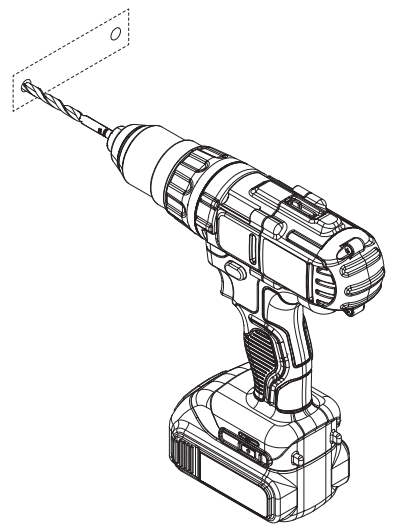
7.1 Rotate the Hydraulic Cylinder upward to allow access to the mountings on the rear vertical Upright. Ensure the Hex Drive Shaft Extension Support is still firmly seated prior to marking its hole locations.



7.2 Using a pencil, marker, or grease pencil, mark the location of every hole (8X) within the vertical Upright mountings. Repeat the procedure for the Hex Drive Shaft Rear Extension Support holes (2X).



7.3 Remove the rack to expose the bolt hole markings. Using a 9MM, 23/64", or T size bit, drill holes into the Utility Body at the marked mounting bolt hole locations created during Step 9.2.



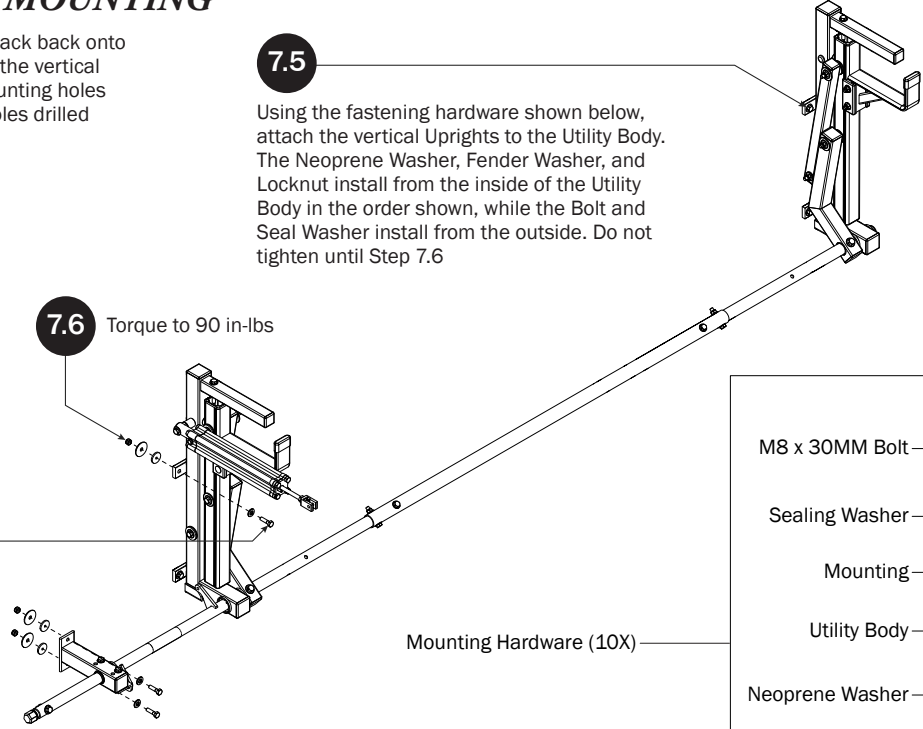
UTILITY BODY MOUNTING

7.4 Lift and position the rack back onto the Utility Body. Align the vertical Uprights until the mounting holes realign to the body holes drilled during Step 7.3.

7.5 Using the fastening hardware shown below, attach the vertical Uprights to the Utility Body. The Neoprene Washer, Fender Washer, and Locknut install from the inside of the Utility Body in the order shown, while the Bolt and Seal Washer install from the outside. Do not tighten until Step 7.6

7.6 Torque to 90 in-lbs

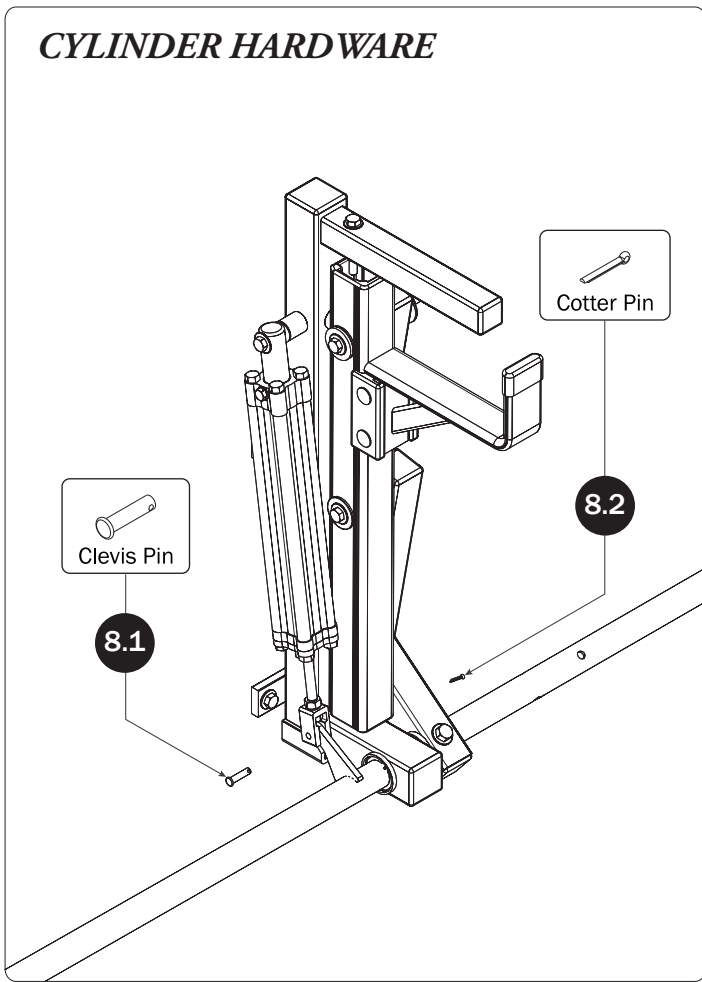
Anti-Seize
Must apply Anti-Seize Compound and torque to specified value.



- M8 x 30MM Bolt
- Sealing Washer
- Mounting
- Utility Body
- Neoprene Washer
- Fender Washer
- M8 Locknut

Mounting Hardware (10X)

CYLINDER HARDWARE



DRIVE SHAFT SEALING

