

PRIME DESIGN™

A Safe Fleet Brand

UXV-215

Utility Vertical, Side Mount, RH

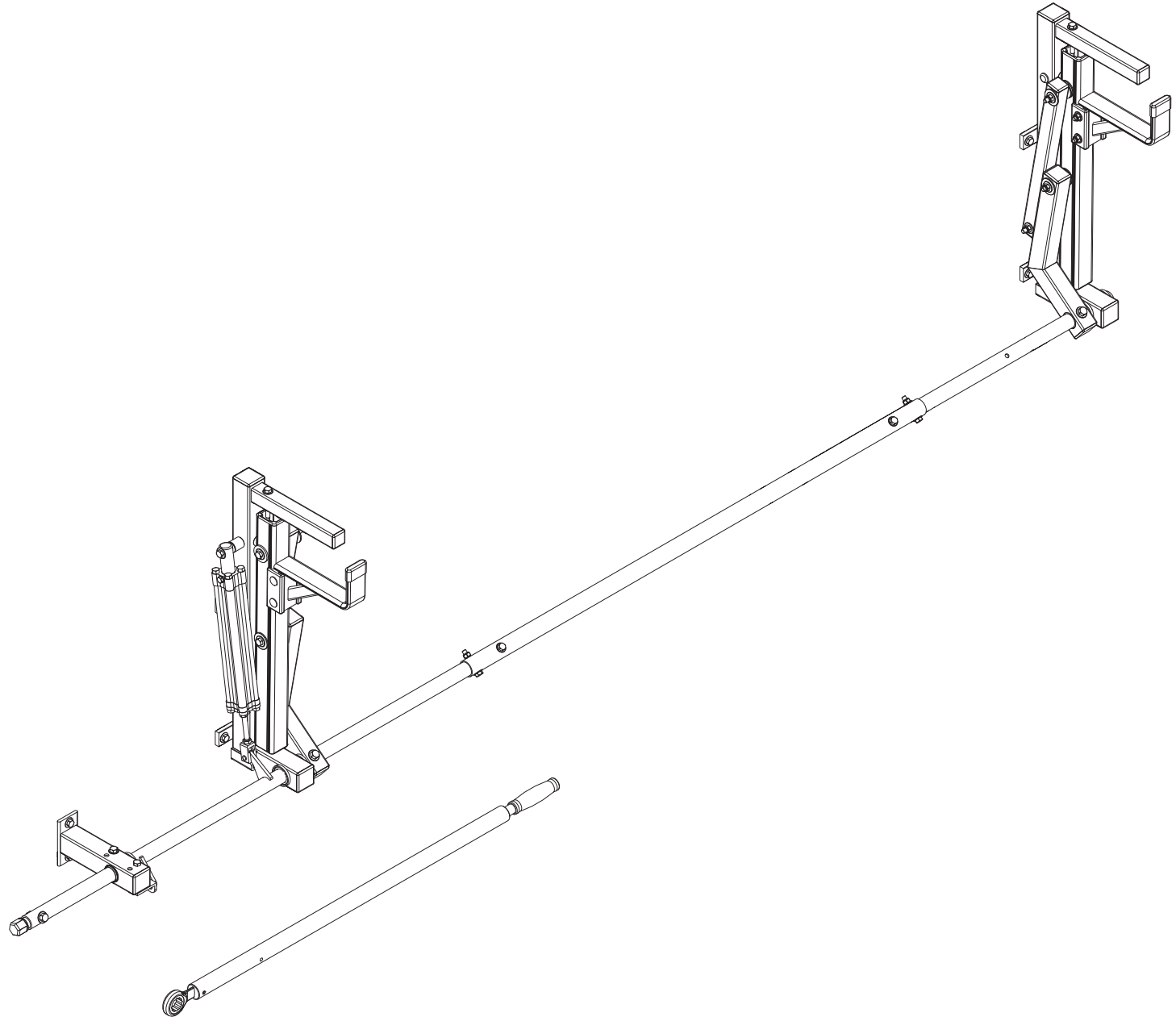
Dimensional Specifications on Page 2

Configuration as shown:

Rotation Right
Two Vertical Uprights
Rear Drive Shaft Support
ELR-8367 Ratcheting Removable Handle
Finish: White Powder Coat
Overall Weight (empty): 41.50 lbs

Load specifications as shown:

Maximum Ladder Weight RH 75 lbs
Maximum Ladder Length RH 28 ft
Maximum Ladder Section RH..... 14 ft

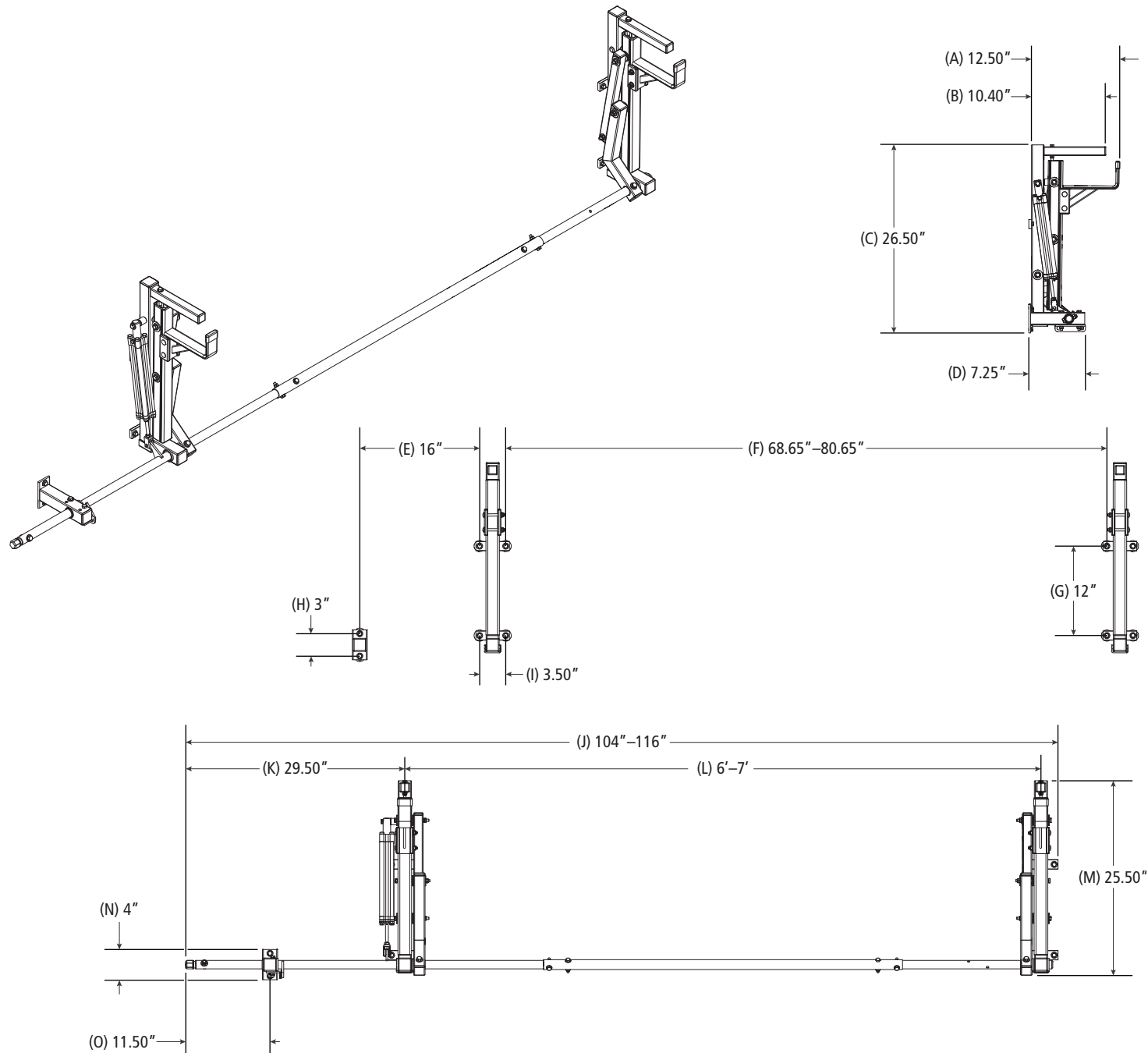


UXV-215

Utility Vertical, Side Mount, RH

Approximate dimensions as shown:

- A: Overall Rack Width..... 12.50"
- B: Upper Post Width 10.40"
- C: Overall Rack Height..... 26.50"
- D: Mounting Foot Length..... 7.25"
- E: Bolt Offset..... 16"
- F: Upright Bolt Spacing..... 68.65"–80.65"
- G: Upright Mounting Bolt Spread..... 12"
- H: Drive Shaft Support Bolt Spread..... 3"
- I: Upright Bolt Spread..... 3.50"
- J: Total Rack Length..... 104"–116"
- K: Drive Shaft Offset..... 29.50"
- L: Upright Spacing..... 6'-7"
- M: Front Rack Height..... 25.50"
- N: Drive Shaft Support Height..... 4"
- O: Drive Shaft Support Offset..... 11.50"



Assembly Manual also available:

UXV-215

USOV-UXV215-US01 Rev-B 0218